

ITEM 18

TENDER T19/33 - RECONSTRUCTION OF THE BRICK ARCH CULVERT AT 20  
CHELOW DENE AVENUE, STANWELL PARK

This report recommends acceptance of a tender for the reconstruction of a brick arch culvert adjacent to 20 Chellow Dene Avenue, Stanwell Park in accordance with the requirements of the Local Government Act 1993 and the Local Government (General) Regulation 2005.

The embankment and brick arch culvert opposite 20 Chellow Dene Avenue, Stanwell Park requires remediation works to address its current condition and to ensure long-term stability. The works include slope stabilisation, grout injected foundation improvements, structural relining of the culvert, new headwall construction and scour protection.

### RECOMMENDATION

- 1 In accordance with clause 178(1)(a) of the Local Government (General) Regulation 2005, Council accept the tender of Cadifern Pty Ltd to rehabilitate a brick arch culvert on Hargrave Creek Catchment adjacent to 20 Chellow Dene Avenue, Stanwell Park, in the sum of \$835,199.61, excluding GST.
- 2 Council delegate to the General Manager the authority to finalise and execute the contract and any other documentation required to give effect to this resolution.
- 3 Council grant authority for the use of the Common Seal of Council on the contract and any other documentation, should it be required, to give effect to this resolution.

### REPORT AUTHORISATIONS

Report of: Glenn Whittaker, Manager Project Delivery

Authorised by: Andrew Carfield, Director Infrastructure + Works - Connectivity Assets + Liveable City

### ATTACHMENTS

- 1 Location Plan

### BACKGROUND

The existing brick arch culvert adjacent to 20 Chellow Dene Avenue, Stanwell Park was constructed in the late 1800s and is over 125 years old. Council has undertaken a detailed assessment of the embankment and culvert which has determined that, due to the current condition of the asset, rehabilitation works are required to ensure the short-term and long-term stability of the embankment.

The project has unique circumstances due to the irregular shape of the culvert, its depth under the roadway of approximately 8m, its close proximity to private property and that the culvert being only accessible from one side. Subsequently, the structural rehabilitation process of the culvert is using a specialised process to spiral wind a structural lining into the culvert and then fill the remaining voids with a grout annulus. Works also include:

- Grout injection under the culvert base
- Construction of a new headwall with brick facade and scour protection works at the culvert outlet
- Stabilisation of the embankment with soil anchors and mesh

Tenders were invited for this project by the open tender method with a close of tenders of 10.00 am on 7 November 2019.

Three (3) tenders were received by the close of tenders and all tenders have been scrutinised and assessed by a Tender Assessment Panel constituted in accordance with Council's Procurement Policies

and Procedures and comprising representatives of the Project Delivery, Infrastructure, Strategy and Planning, Finance and Governance and Customer Service Divisions.

The Tender Assessment Panel assessed all tenders in accordance with the following assessment criteria and weightings as set out in the formal tender documents:

### **Mandatory Criteria**

- 1 Satisfactory references from referees for previous projects of similar size and scope
- 2 Financial assessment acceptable to Council which demonstrates the tenderer's financial capacity to undertake the works
- 3 Attendance at the site inspection

### **Assessable Criteria**

- 1 Cost to Council - 35%
- 2 Appreciation of scope of works and construction methodology - 20%
- 3 Experience and satisfactory performance in undertaking projects of similar size, scope and risk profile - 10%
- 4 Staff qualifications and experience - 5%
- 5 Proposed sub-contractors - 10%
- 6 Project Schedule - 5%
- 7 Demonstrated strengthening of local economic capacity - 5%
- 8 Workplace Health and Safety Management System - 5%
- 9 Environmental Management Policies and Procedures - 5%

The mandatory assessment criteria have been met by the recommended tenderer.

The Tender Assessment Panel utilised a weighted scoring method for the assessment of tenders which allocates a numerical score out of 5 in relation to the level of compliance offered by the tenders to each of the assessment criteria as specified in the tender documentation. The method then takes into account pre-determined weightings for each of the assessment criteria which provides for a total score out of 5 to be calculated for each tender. The tender with the highest total score is considered to be the tender that best meets the requirements of the tender documentation in providing best value to Council. Table 1 below summarises the results of the tender assessment and the ranking of tenders.

TABLE 1 – SUMMARY OF TENDER ASSESSMENT

<b>Name of Tenderer</b>	<b>Ranking</b>
Cadifern Pty Ltd trading as Cadifern Civil	1
Interflow Pty Limited	2
Downer Pipetech	NON-CONFORMING

### **PROPOSAL**

Council should authorise the engagement of Cadifern Pty Ltd to carry out the brick arch culvert reconstruction adjacent to 20 Chellow Dene Avenue, Stanwell Park in accordance with the scope of works and technical specifications developed for the project.

The recommended tenderer has satisfied the Tender Assessment Panel that it is capable of undertaking the works to Council's standards and in accordance with the technical specification.

An acceptable financial capability assessment has been received in relation to the recommended tenderer.

Referees nominated by the recommended tenderer have been contacted by the Tender Assessment Panel and expressed satisfaction with the standard of work and methods of operation undertaken on their behalf.

## CONSULTATION AND COMMUNICATION

- 1 Members of the Tender Assessment Panel
- 2 Nominated Referees

## PLANNING AND POLICY IMPACT

This report contributes to the delivery of Our Wollongong 2028 goal 5 “We have a healthy community in a liveable city”. It specifically delivers on the following:

Community Strategic Plan	Delivery Program 2018-2021	Operational Plan 2019-20
Strategy	3 Year Action	Operational Plan Actions
5.5.1 Public facilities in key locations and transport routes are maintained and clean, accessible and inviting to our community and visitors	5.5.1.2 Manage and maintain community infrastructure portfolio with a focus on asset renewal	5.5.1.2.2 Review Council's Asset Management Plans: Buildings, Recreation, Stormwater, Plant and Vehicles, Transport

## RISK ASSESSMENT

The risk in accepting the recommendation of this report is considered low on the basis that the tender process has fully complied with Council's Procurement Policies and Procedures and the Local Government Act 1993.

The risk of the project works or services is considered medium based upon Council's risk assessment matrix and appropriate risk management strategies will be implemented.

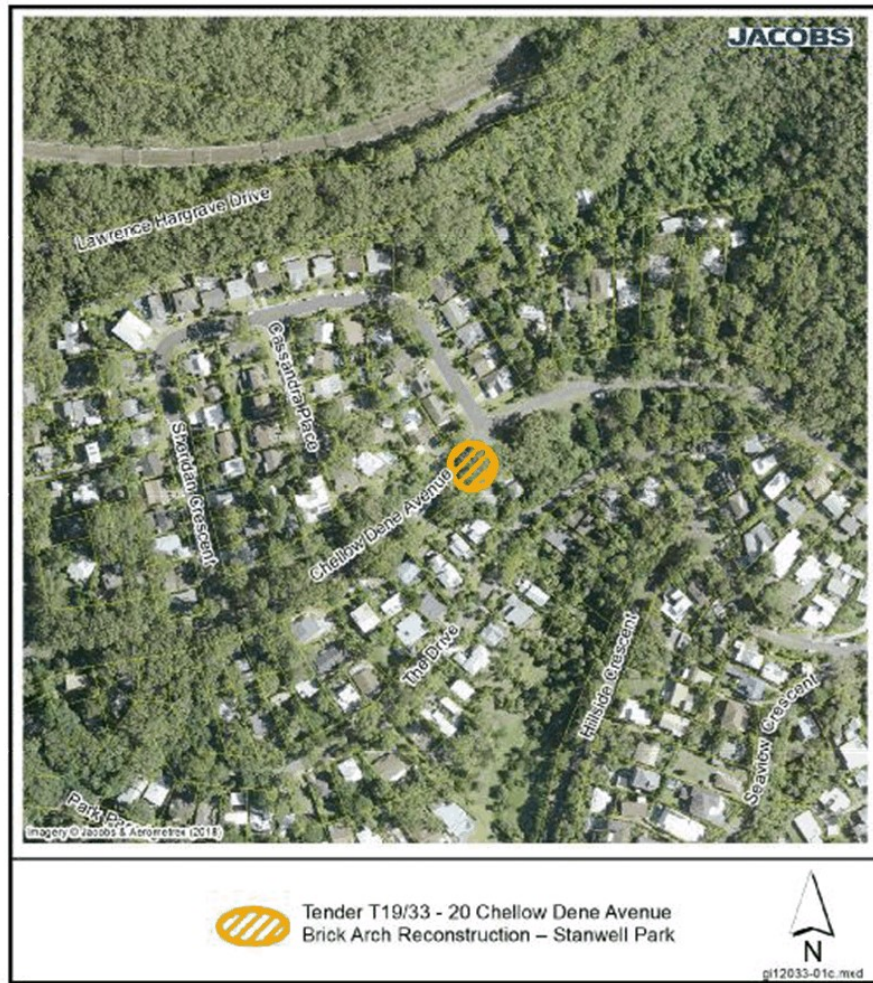
## FINANCIAL IMPLICATIONS

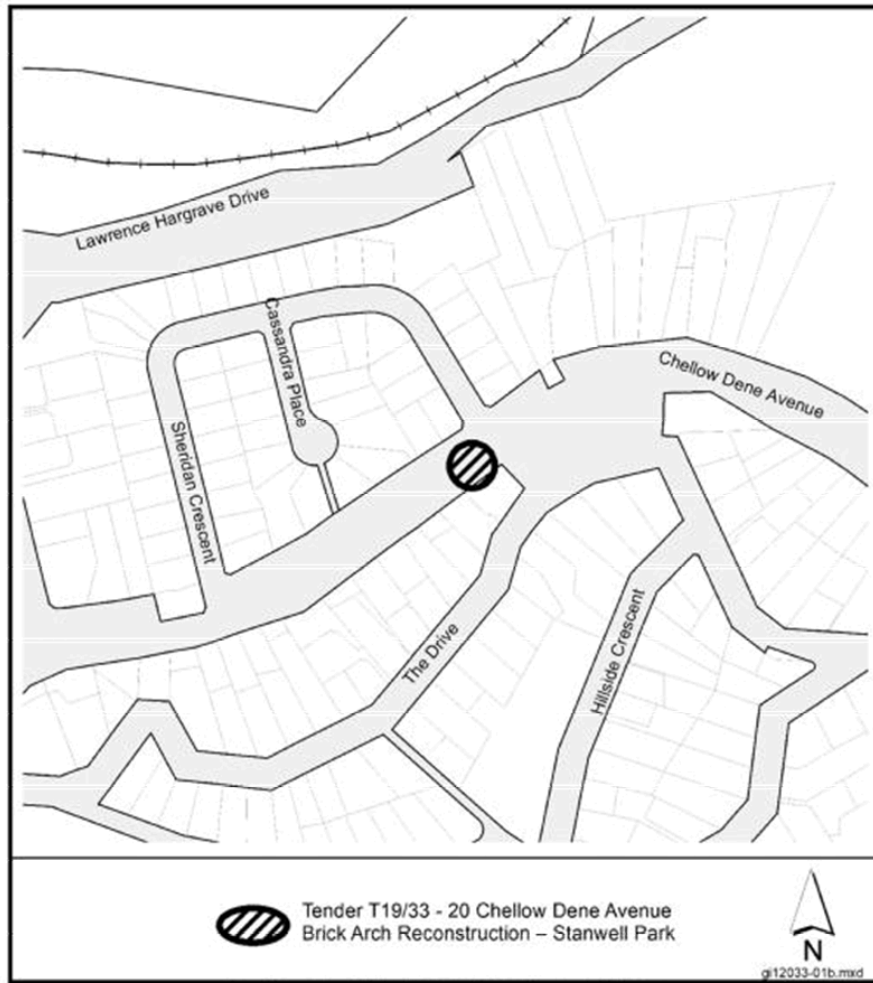
It is proposed that the total project be funded from the following source/s as identified in the Annual Plan –

Capital Budget 2019/20

## CONCLUSION

The recommended tenderer has submitted an acceptable tender for this project and Council should endorse the recommendations of this report.





While every effort has been made to ensure the highest possible quality of data, no liability will be accepted for any inaccuracy of the information shown.  
Copyright © Wollongong City Council Mapping Services Section. This map may not be reproduced in any form without the express written permission of Wollongong City Council.