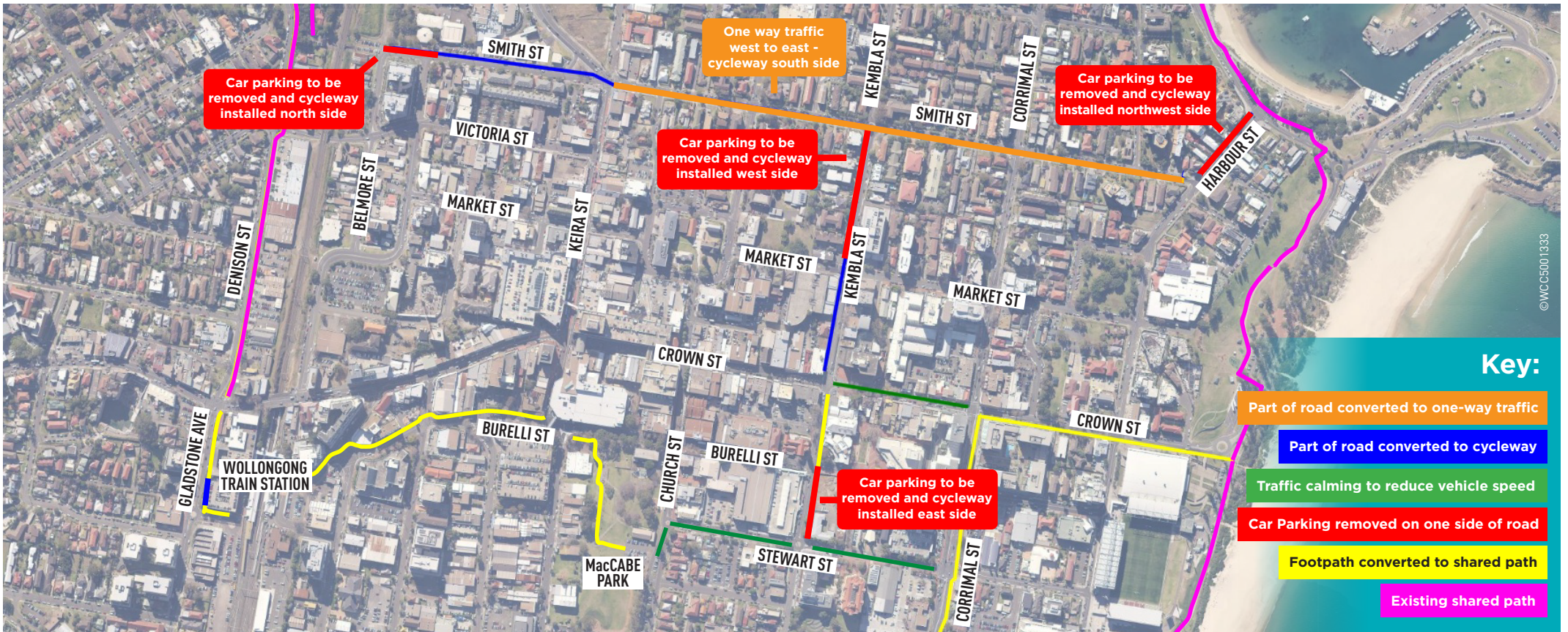


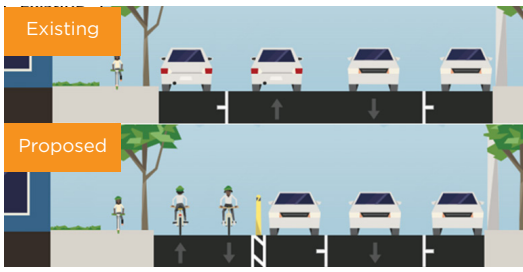
# Wollongong CBD Pop-up (Pilot) Cycling Routes

visit [wollongong.nsw.gov.au/cycling](http://wollongong.nsw.gov.au/cycling) for detailed plans



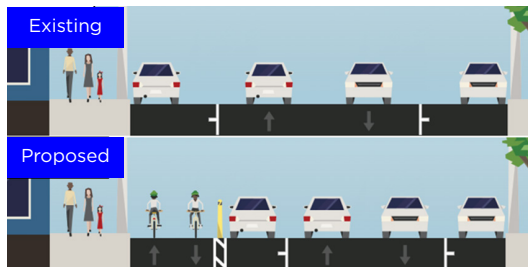
**Road converted to one-way traffic with parking retained and cycleway on south side**

- Smith St between Harbour St and Keira St facing west (see diagram below)



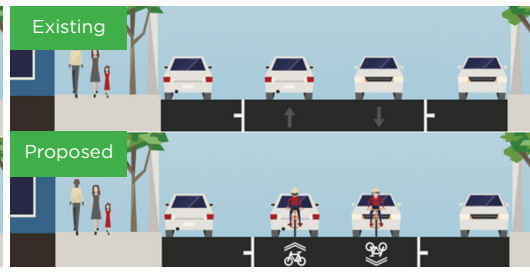
**Part of road converted to cycleway with parking retained**

- Smith St between Keira St and Belmore St facing west,
- Kembla St between Crown St and Market St facing north,
- Gladstone Ave outside station carpark facing south (see diagram below)



**Traffic calming to reduce vehicle speed**

- Crown St between Kembla St and Corrimal St,
- Stewart St between Church St and Corrimal St,
- Church St between Stewart St and George St (see diagram below)



**Car Parking replaced with cycleway on one side of road**

- Harbour St between Smith St and Cliff Rd facing northeast,
- Kembla St between Market St and Smith St facing north,
- Kembla St between Burelli St and Stewart St facing south,
- Smith St between Belmore St and Young St facing east (see diagram below)

