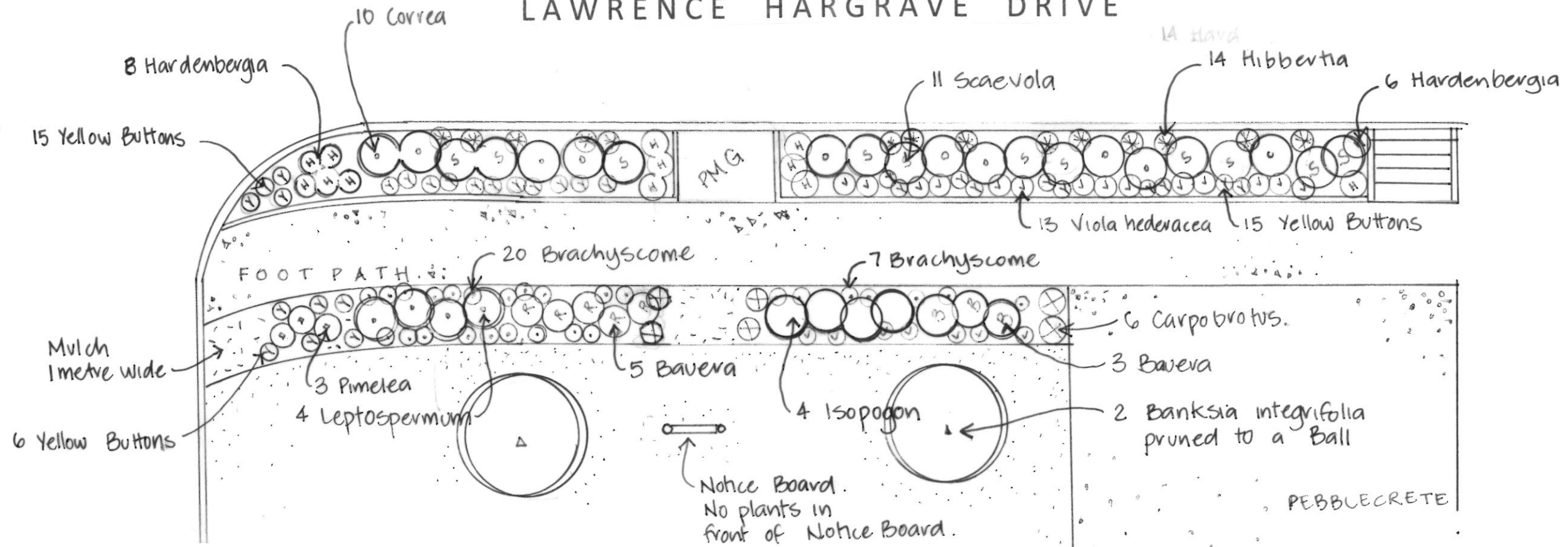


NORTHCOTE STREET

LAWRENCE HARGRAVE DRIVE



PLANT SCHEDULE

Plant Name	No	Size
Banksia integrifolia	2	20 litre
Banksia spinulosa	3	250mm
Bauera rubiodes	5	250mm
Brachyscome multifida or angustifolia	27	150mm
Yellow buttons	36	150mm
Correa obtusifolia	11	250mm
Hardenbergia violaceae	14	150mm
Hibbertia scandens	14	150mm
Isopogon anemonifolius	4	250mm
Leptospermum horizontalis or Chamelaucium uncinatum	5	250mm
Pimelea ferruginea	6	150mm
Scaevola Groundcover	12	250mm

COLEDALE COMMUNITY HALL

Coledale Community Hall

Lawrence Hargrave Drive, Coledale

Verge Planting Scheme

Prepared by Urban Greening Team

Date July 2020 Scale 1:100

Notes

- Remove weeds and grass from areas to be planted.
- Incorporate organic compost into garden beds.
- Add water holding crystals to each planting hole.
- Spread 70mm depth of hardwood mulch over garden beds.