

ITEM 3 FAIRY CREEK CORRIDOR MASTER PLAN

The Fairy Creek Corridor has been highlighted as an important recreational precinct covering the suburbs of West Wollongong, Keiraville, Gwynneville and North Wollongong and a key component of the Keira Green Corridor.

In developing this master plan, a series of community engagement initiatives were undertaken to inform the development of a draft recreational master plan.

The draft master plan was then placed on public exhibition in mid 2018. The community feedback noted that the community was very supportive of the concepts exhibited and will provide a strong platform for future grant funding opportunities for improved amenity, connectivity and vegetation management.

The report now seeks Council's adoption of the draft Fairy Creek Corridor Master Plan.

RECOMMENDATION

- 1 The Fairy Creek Corridor Master Plan be adopted by Council as a reference point for the future renewal and development of the precinct.
- 2 The Implementation Summary be noted.

REPORT AUTHORISATIONS

Report of: Peter Coyte, Manager Property and Recreation

Authorised by: Kerry Hunt, Director Community Services - Creative and Innovative City

ATTACHMENTS

- 1 Draft Fairy Creek Corridor Master Plan
- 2 Fairy Creek Corridor Masterplan Engagement Report

BACKGROUND

The Fairy Creek Corridor study area is a dynamic and diverse open space corridor that is highly valued by the local community. The area incorporates land in the west from the M1 near Mount Keira Road then east along the historic Keira Mine Tramway track through to Wiseman Park Gwynneville, noting the Beaton Park Precinct was master planned independently in 2018 and the broader implications of which have been considered as part of the Fairy Creek Corridor Master Plan.

The study area encompasses a creek habitat, natural remnant forests, many established trees, grassed open spaces, sporting ovals and sporting infrastructure and a stormwater detention basin.

In 2013, Council officers pursued a site analysis report that identified the constraints and functionality of the Fairy Creek Corridor precinct. This site analysis report in turn noted the key features of the study area and aided in the preparation of a draft master plan.

In 2017/18 Council supported the development of the Fairy Creek Corridor Master Plan. The following opportunities were identified as key outcomes for consideration in the development of the draft master plan:

- Identify opportunities for community meeting spaces.
- Enhance sporting, social, environmental and recreational services.
- Investigate opportunities to improve the functionality of the creek for recreational uses.

An extensive community engagement phase was held with the draft master plan being placed on exhibition from 2 May to 8 June 2018 which saw the community actively encouraged to have its say about the study area and attributes.

In addition to one-on-one briefings with key local stakeholder Neighbourhood Committee Forum 5, Council officers undertook an onsite information stall, web based engagement, a mail out to over 500 residents, targeted surveys, engagement with local schools, bushcare groups, sporting clubs and the Disability Trust.

The engagement phase and master plan preparation identified the key areas of focus for the precinct going forward, these included:

- The heritage value of the tramway.
- Environmental significance of Endangered Ecological Community Illawarra Lowland Grassy Woodland adjoining Wiseman Park.
- The importance of stormwater drainage infrastructure.
- The opportunity for enhancing existing pathways for improved connectivity.
- Desire for strong community connection to the reserves for passive and active recreation pursuits.

Results of the engagement phase noted that from the workshops and face to face meetings are as follows:

Response	Number of responses
Support	36
Do not support	5

The majority of respondents (35) were supportive of the proposal to develop the Fairy Creek Master Plan while five respondents did not support the proposal. The primary reason for non-support from the five community submissions was the desire to maintain the natural state of the study area rather than progress with improvements. Formal footpaths will provide a more accessible area. It is not proposed to change the natural feel of the area but to improve ability for the broader community to enjoy in an inclusive manner.

As outlined in Attachment 2 the feedback on the master plan focused on eight themes, these being:

- Paths
- Playgrounds
- Accessibility
- Infrastructure;
- Recreational activities
- Natural environment
- Heritage
- Vehicles.

Key considerations which have since been incorporated in the final draft Fairy Creek Corridor Master Plan presented to Council in Attachment 1 are:

- More street trees, planting and succession planting for Wiseman Park (linked to the Urban Greening Strategy).
- Additional wider footpaths to enhance connectivity to local schools.
- Provision of street furniture such as bike racks, seating, bubblers and an equally accessible BBQ.

The final draft master plan also incorporates programmed renewal works at Wiseman Park including the renewal of the sporting amenities to incorporate Disabled Discrimination Act compliant public toilets and enhanced sportsfield lighting to address ongoing requests from local sporting clubs for training purposes.

The master plan is a long term vision for the study area and will be a key reference in subsequent capital planning and external grant funding applications and as such, careful consideration should be focused on its staged implementation.

Stage 1 should incorporate the following:

- A commitment to undertake a further safety audit of the study area.
- Installation of signage – directional, hazard and interpretation.
- Pursuing projects already scheduled for funding (lighting and amenities).
- Pursuing funding for outdoor exercise equipment at Wiseman Park.

Subsequent stages should include:

- Pursuing street tree planting.
- Relocation of the playground at Wiseman Park.
- Creation of a plaza in Gipps Road.
- Extending the pathway through Green Acre Road Reserve to Gilmore Street.
- Continue implementing the Vegetation Management Plan recommendations.
- Upgrade Gilmore Park amenities.

PROPOSAL

The draft Fairy Creek Corridor Master Plan is endorsed as the reference point for the future renewal and development of the precinct.

CONSULTATION AND COMMUNICATION

Council officers have undertaken extensive community engagement initiatives throughout 2018, with key stakeholder Neighbourhood Committee Forum 5 demonstrating a strong willingness to actively participate in the engagement phase. The draft master plan was exhibited from 2 May to 8 June 2018. The exhibition featured on Council's Have your Say page with an online survey feature.

Council also facilitated a well-attended onsite information stall at Wiseman Park as well as engaging staff and children of nearby schools.

The details of the outcome of the engagement phase are provided in Attachment 2.

PLANNING AND POLICY IMPACT

This report contributes to the delivery of Our Wollongong 2028 goal "We are a healthy community in a liveable city". It specifically delivers on the following:

Community Strategic Plan	Delivery Program 2018-2021	Operational Plan 2018-19
Strategy	3 Year Action	Operational Plan Actions
5.5.1 Public facilities in key locations and transport routes are maintained and clean, accessible and inviting to our community and visitors	5.5.1.1 Well maintained assets are provided that meet the needs of the current and future communities	Undertake high priority works, as per open space works schedule to strengthen connections and people movement
5.1.4 Urban areas are created to provide a healthy and safe living environment for our community	5.1.5.1 Provide an appropriate and sustainable range of quality passive and active open spaces and facilities	Explore opportunities outlined in the needs assessment developed for the Beaton Park Precinct

FINANCIAL IMPLICATIONS

A number of the key initiatives identified in the Fairy Creek Corridor Master Plan have secured funding in Council's Infrastructure Delivery Program 2018-2022. Those unfunded elements identified in the implementation table below will be progressed for consideration and potential funding in subsequent years through Council's Annual Planning process.

The Implementation Summary key features are outlined below:

Project	Budget Estimated Cost	Programmed
Wiseman Park amenities renewal (funded)	\$700K	2021/22
Wiseman Park Oval lighting	\$280K	2019/20
Gilmore Park amenities	\$540K	2020/21
Linkage path Foleys to Gipps	\$390K	Unfunded
Fitness equipment installation	\$100K	Pending Business Proposal
New playground	\$350K	2022/23
Signage [interpretive and directional]	\$35K	Unfunded
Gipps Street plaza	\$81K	Unfunded
Vegetation Management Plan	\$10K	Unfunded
Implement Vegetation Management Plan	\$200K	Unfunded
Tramway Link share path	\$1,337K	Unfunded
Street tree planting	Implemented in combination with Urban Greening Strategy	In existing budgets
South Wiseman Park woodland path	\$275K	Unfunded

CONCLUSION

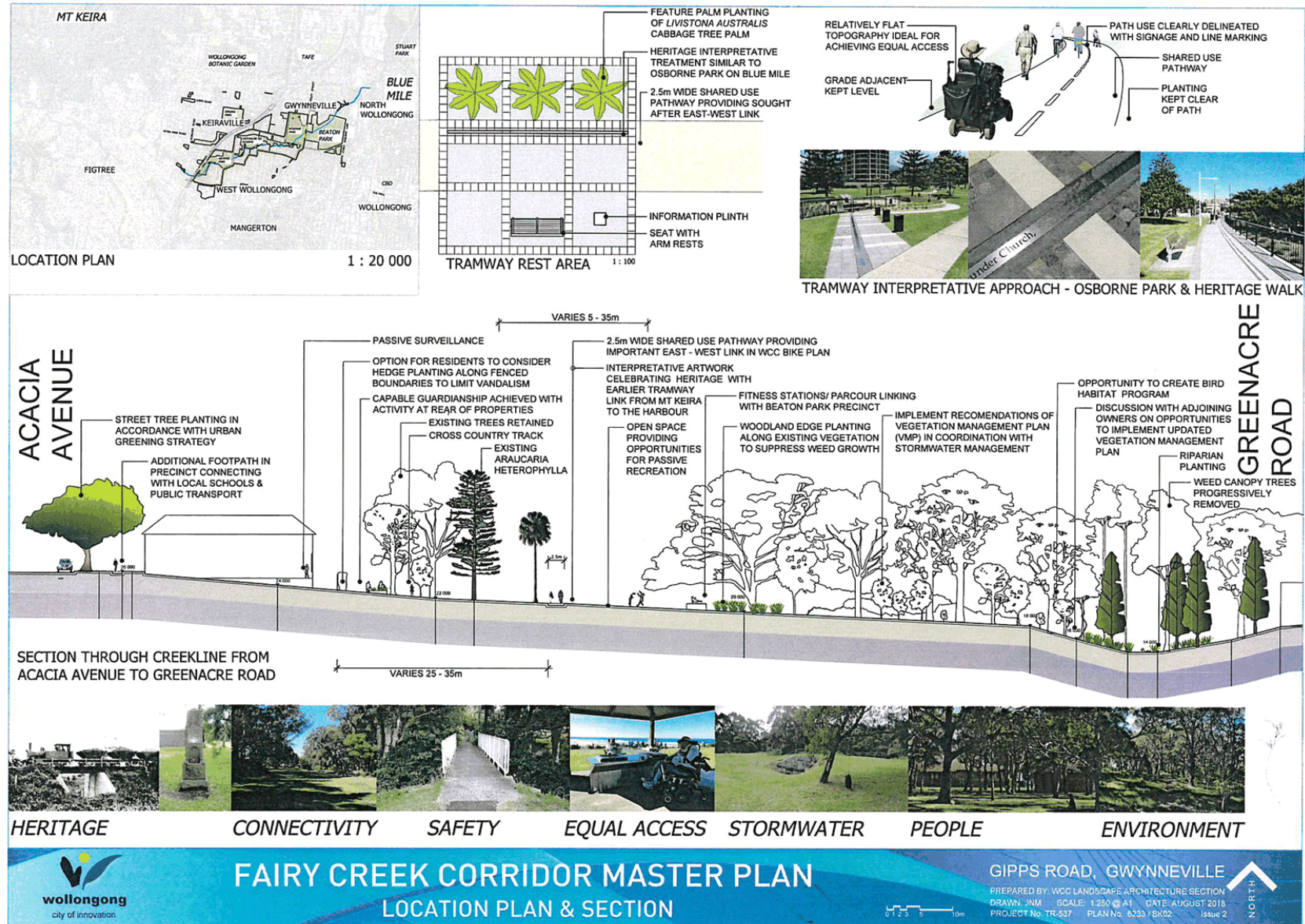
The Fairy Creek Corridor study area is a unique natural and built open space corridor that is highly valued by the local community and within two kilometres of the CBD.

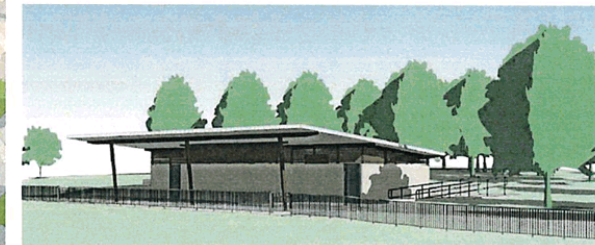
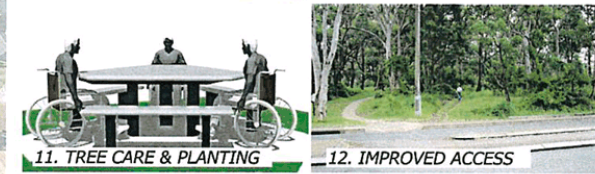
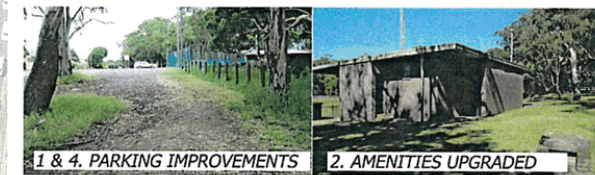
Council officers have undertaken a comprehensive community consultation project which has effectively pursued the community's input into the development of the draft Fairy Creek Corridor Master Plan.

The consultation activities and variety of engagement methods used during this process have provided the community with the opportunity to actively contribute to the development of the master plan.

As the community was very supportive of the concepts, it is recommended that the draft Fairy Creek Corridor Master Plan be presented to Council for adoption.







OUR PLACE
our voice
OUR FUTURE



FAIRY CREEK MASTERPLAN

ENGAGEMENT REPORT

June 2018

Table of Contents

Executive Summary.....	3
Background	4
Stakeholders	4
Methodology.....	5
Participation Results	6
Feedback Results.....	7
Appendix 1: FAQ	13
Appendix 2: Feedback Form	15

Executive Summary

The Fairy Creek corridor is for strip of land from Wisemans Park on the east, then west along the old Keira Mine tramway track, and then south west to the M1 near Mt Keira Road. The area includes a creek habitat; natural remnant forests; many established trees; grassed open areas; a stormwater detention structure; sporting facilities; and a public playground. The site also has some historical significance with the Mount Keira Tramway, now known as Greenacres Road Reserve, located along a section of the study area. Council, with information provided by Neighbourhood Forum 5, drafted a concept masterplan for the area and asked the community to comment.

The Fairy Creek Masterplan was exhibited from 2 May 2018 until 8 June 2018, extended from the original deadline of 25 May 2018. Stakeholders were notified of the draft Plan via Council's *Advertiser* pages on 16 May 2018. The exhibition went live on Council's Have Your Say page on 2018 which included Frequently Asked Questions (Appendix 1) and an online version of the Feedback Form (Appendix 2). Paper copies of the Frequently Asked Questions and Feedback Form were also made available at all Wollongong libraries and the Customer Service Centre during the exhibition.

A targeted group email, inviting stakeholders to complete the online Feedback Form and attend the onsite kiosk and Neighbourhood Forum 5 was emailed with the information above. An onsite kiosk was held on 12 May 2018 and attended by 45 people, face to face meetings were held with surrounding businesses. Workshops were held with 24 Gwynneville Public School students on 5 June and 12 people from The Disability Trust on 6 June.

The total number of submissions received during the exhibition period was 44, with 3 submissions via the Have Your Say website feedback form and 41 emailed submissions. The majority of respondents (36) supported the proposal to develop the Fairy Creek Master Plan while five opposed. The primary reason for non-support was the desire to maintain the natural state.

The most prevalent comments related to the paths including suggestions for wider paths or additional or changed path routes. Two requests to not formalise the path were received. Requests for additional infrastructure were made, there included extra tables and picnic shelters, bubblers, bike racks/parking, toilets, gates in the current fence and lighting.

Suggestions were made regarding the proposed playground including making it larger, installation of a liberty swing, natural play areas and not using shade sails due to risk of vandalism. There were concerns over the proximity to the cricket field (due to balls overhead) and trees (due to falling branches). Two queries were received regarding the proposed location, suggesting the current location is suitable.

There was support for the exercise equipment, however one question regarding need for the suggested quantity. Suggestions to establish an off leash area and activities for young people were made. Specific suggestions included a skate park, parkour course and a small zoo.

Submissions spoke to the importance of native flora and fauna. It was suggested that concrete paths would be detrimental to the natural environment. Tree safety was also raised, suggesting strong winds are blowing down branches and some trees are too close to power lines. It was suggested that weed removal is required and there was also a suggestion to start a community garden in the space.

Heritage was considered important and suggestions were made to move the monument to a more prominent position and include a replica of a typical 19th century coal cart.

Background

The Fairy Creek Corridor is a dynamic and diverse open space corridor that is valued by Council and the community. The site is located approximately 2km from the Central Business District, and is bordered with parks and reserves, in the suburbs of Gwynneville and West Wollongong. It covers an area of approximately 17.5 hectares, from Wisemans Park on the east, then west along the old Keira Mine tramway track, and then south west to the M1 near Mt Keira Road.

The study area is a unique strip of land and includes: a creek habitat; natural remnant forests including endangered ecological communities; many established trees; grassed open areas; a stormwater detention structure; sporting facilities; and a public playground. The site also has some historical significance with the Mount Keira Tramway, now known as Greenacres Road Reserve, located along a section of the study area.

Acknowledging the strong social and environmental value of the area, Neighbourhood Forum 5 (NF5) independently prepared a Concept Plan for the area, referred to as a 'Community Land Management Plan'. This was presented to Council for its consideration. Following this, Council resolved to acknowledge the work of NF5 and to support further investigation into developing a draft Landscape Master Plan for the area.

The purpose of preparing the Fairy Creek Master Plan is to provide a vehicle within which Council can undertake further site analysis work and engage with the community to elicit their ideas, comments and stories about the future improvement of the Fairy Creek corridor. This process will lead to a final Master Plan that will identify ways to protect and enhance the natural areas of the reserve; propose improved and safer pathways and connections for pedestrians and cyclists; and suggest ways of maintaining and complementing the park areas and sporting facilities within the reserve.

Stakeholders

Stakeholders identified prior to the commencement of the engagement period are detailed in Table 1:

Table 1

Decision Makers	
Lord Mayor	Councillors
Internal Stakeholders	
<ul style="list-style-type: none"> Community Engagement team Executive Management team 	<ul style="list-style-type: none"> Community, Cultural and Economic Development division

<ul style="list-style-type: none"> Media team Customer Service team 	<ul style="list-style-type: none"> Property & Recreation division Environmental Strategy and Planning division
External Stakeholders	
Community <ul style="list-style-type: none"> Local residents Neighbourhood Forum 5 (NF5) Illawarra Local Aboriginal Land Council Illawarra Historical Society Local Bushcare Groups The Disability Trust Aboriginal Reference Group St Brigid's Catholic School Gwynneville Public School West Wollongong Public School St Therese Catholic School Wiseman's Park Tennis Club Gilmore Park Tennis Club Wiseman's Park Bowling Club Keira Cricket Club University of Wollongong 	Business <ul style="list-style-type: none"> Gwynneville Shops Endeavour Energy Premier Illawarra Bus Service Government <ul style="list-style-type: none"> Roads & Maritime Services (RMS) NSW Office of Environment & Heritage (OEH)

Methodology

The following section outlines the various activities undertaken during the engagement period. The engagement strategy identified a number of different target audiences, leading to a variety of communication techniques being utilised during the engagement process, which are summarised in Table 2.

Table 2 – Summary of Communication and Engagement Methods

Communication and engagement methods	Stakeholders
Information Pack (see Appendices 1 & 2) <ul style="list-style-type: none"> Distributed to all Libraries and Customer Service Distributed to Neighbourhood Forum 5 Distributed to Lord Mayor and Councillors Distributed to adjacent residents via post 	Residents Schools Community Groups
Email Information on the draft plan, and invitation to provide feedback via Have Your Say page.	Schools Community groups
Wollongong Advertiser	One notice placed at beginning of engagement period.
Online Engagement All relevant documents were available via Council's engagement website. A feedback form was provided.	All stakeholders

Onsite Kiosk An onsite kiosk was held to provide more information and the opportunity to ask questions.	All stakeholders
Targeted Face to Face Meetings Face to face meetings were held with the business owners	Business
Workshops A workshop was held with targeted participant	The Disability Trust Gwynneville Public students

Participation Results

This section of the report provides details on the participation at engagement activities (Table 3), the on-line participation summary (Table 4) and the feedback received regarding the draft masterplan (see Table 5-13).

Engagement Activity Results

Details of the number of participants for each engagement activity are presented in Table 3.

Table 3: Engagement participation results

Engagement activity	Participation
On-site Kiosk attendance numbers	45
Targeted Face to Face meetings	2
Workshop Gwynneville Public School	24
Workshop The Disability Trust	12
Submissions received during the engagement period	44

Online Engagement Results

A total of three submissions were received online. Table 4 presents the usage statistics for the project page on Council's website.

Table 4: Summary of online participation

Measure and Explanation	Usage
Unique Site Visits – Total number of visits to the project page	242
Aware – Total number of users who viewed the project page	181
Informed – Total number of users who opened a hyperlink or read a document	116
Engaged – Total number of users who have actively contributed to the project via the project page	2

Submission results

Community members were asked:

1. Do you support the proposal to develop the Fairy Creek Master Plan

2. Could you please take your time and share with us your ideas, comments and stories that we can include in the development of the Fairy Creek Corridor Master Plan.

Feedback came from 2 workshops 2 face to face meetings and 44 submissions, which included online responses, emails, and feedback forms. The results are recorded in Table 5 - 13.

Feedback Results

The majority of respondents (35) were supportive of the proposal to develop the Fairy Creek Master Plan while five respondents did not support the proposal. The primary reason for non-support was the desire to maintain the natural state.

Response	No. responses
Support	36
Do not support	5

The following tables provide the responses to the question 'Could you please take your time and share with us your ideas, comments and stories that we can include in the development of the Fairy Creek Corridor Master Plan'. The responses have been themed.

THEME: Paths

The most prevalent comments related to the paths in the proposed masterplan. Wider paths were requested by eight respondents while ten suggestions were made for additional or changed path routes. A request was made to include shared path signage and ensure path terminal treatments conform to guidelines. Two requests to not formalise the path were received.

Table 5: Overview of comments regarding paths

Theme	Comments	No. responses
Wider paths	Need a wider footpath on Foleys Road near the bowling club	8
	The shared path should be 3m	
	Need to accommodate large groups	
Do not formalise footpaths	Pedestrians already use this area safely and walk there with their families and dogs because it is naturally beautiful. There is no need to change this.	3
	Strongly oppose the concept of shared tracks...many trees and much of the undergrowth will have to be removed	
	The Fairy Creek Corridor is a rare piece of 'untouched' public space that gains appeal and beauty precisely because it does not have a concrete path	
Signage	Include 'shared path' marking and advisory signage to promote cooperation between path users	1
Path terminal treatments	Path terminal treatments should conform to the guidelines	1

Additional Paths	Install a new footpath between the tennis courts and the Oval	11
	School, Gwynneville, St. Brigid's and West Wollongong should be connected by shared user path	
	Shared path around Wisemans Park Oval to avoid conflict	
	Pathway 1.8m wide should be from Gilmore Street, just south of the tennis courts, to Philips Avenue and be 1.8m or better, not informal and not back to Gilmore Street.	
	Need to include shareway extension from Greenacre Reserve via Gilmore and Fisher Streets to Crown Street/Mount Keira Road.	
	Shareway from Beaton Park to lead to crossing to shops with path to school	
	Path off shareway should be a short direct link to Acacia Avenue	
	Crucial to link park and shareway south-west through private property and Electricity land to Gilmore Street/Park.	
	Need to extend footpath on south side of Gipps Road.	
	Path to link Greenacre Road Reserve to link Gilmore St, Acacia Ave and Vickery St	
	Pathway around river	
	Shared paths in the Fairy Creek Plans should also connect the shops and widest range of other trip generators	
	Extend footpath shown on Greenacre Rd west to Gilmore St – prams, wheelchair, motor scooters	

THEME: Playgrounds

A larger playground was suggested by four respondents while others suggested installation of a liberty swing (similar to Stuart Park), natural play areas and not using shade sails due to risk of vandalism. There were concerns over the proximity of the proposed playground to the cricket field (due to balls overhead) and trees (due to falling branches). Two queries were received regarding the proposed location, suggesting the current location is suitable.

Table 6: Overview of comments regarding playgrounds

Theme	Comments	No. responses
Larger playground	Playground is a bit limited - perhaps a few other pieces of equipment	5
	Better playground	
	There needs to be more swings	
Concern for playground safety	Think about overhanging branches of old trees falling especially on windy days	5
	Some type of screen would be needed to stop cricket balls if playground is near oval	
	Place a little back from the road	
	Concerns about cricket balls and proximity to playground	
Suggestion for playground infrastructure	Install a liberty swing	6
	It would be nice if the new playground could accommodate natural play	
	Big slide	
	Do not use shade cloth due to vandalism	
	Accessible playground	

Query Location	Safety gate for playground	2
	There are often informal birthday gatherings. I would still want tables near the play equipment	
	Please don't relocate the children's playground at Wiseman Park	
	Query moving playground away from Village Square, shops and proposed exercise station, and if moved because it can't be effectively fenced, shelter should adjoin, not across path, and toilets guaranteed to be open	

THEME: Accessibility

Accessibility was raised by respondents including accessible paths to the playground, wheelchair accessible tables, accessible toilets and accessible parking.

Table 7: Overview of comments regarding accessibility

Theme	Comments	No. responses
Accessible paths and tables	Wheelchair accessibility of paths and tables	2
	I'm interested that the tables are genuinely wheelchair accessible due to the proximity of Paramedowns	
Accessible toilets	Provide accessible toilets	3
	Put lights in toilets	
Accessible parking	Equally accessible car spaces	2
	Seal car park, clients are not stable on feet	

THEME: Infrastructure

Requests for additional infrastructure were made, there included extra tables and picnic shelters (4), bubblers (3), bike racks/parking (2), toilets (4), gates in the current fence (6) and lighting (4).

Table 8: Overview of comments regarding Infrastructure

Theme	Comments	No. responses
Install more picnic tables and shelters	A couple more picnic tables	4
	A wet weather outdoor venue so that small events like this could still go ahead without standing in the pouring rain	
Install bubblers	Bubblers 2 or 3 please	3
	Can we have more water fountains/bubblers – in particular, one at the playground	
Install bike racks and parking	Bicycle parking and bike racks need to be included at playgrounds and sporting fields	2
Storage for school	Would like sports storage if possible – they take 2 or 3 wheelie bins across each day with temporary goals etc.	1
Maintenance	Step to oval require upgrading	1
Toilets	Add public accessible toilets to amenity block	4
	Retain Gilmore park toilets	
	Need for a change table in the public toilet	
Additional gates in fence	More gates are required in the fence around the oval to allow access onto and across the ground. Gates at each end of the ground will also	6

	allow balls to be retrieved without risk of anyone injuring themselves climbing over the fence.	
Lighting	Especially Vickery to Mercury.	4
	investigation of lighting for pedestrian routes through the corridor and to discourage vandalism	
	Lighting along bike track/walkway as a safety issue after dark	

THEME: Recreational Activities

There was support for the exercise equipment (7), however one question regarding need for the suggested quantity. There were four suggestions to establish an off leash area and six requests for activities for young people. Specific suggestions included a skate park, parkour course and a small zoo.

Table 9: Overview of comments regarding recreational activities

Theme	Comments	No. responses
Establish off leash areas	Greenacre Road reserve made available to dog walkers	5
	Could the Oval be made as an off-leash dog area between certain hours (e.g. 5am-8am)	
Support exercise equipment	Big tick	7
	Fitness stations would be an added bonus and benefit a significant number of people	
	Do we really need two exercise stations in this little park	
Activities for young people to do	Provide some facilities for younger people (e.g. a graffiti wall)	6
	Suggested something for older kids	
Include skate park	Can a skate park be included?	3
Additional sports activities	Soccer field, netball, better cross country track and court dirt bike track	1
Fly-line	Fly line over the water	1
Include parkour course	I believe we could work together in the development of this parkour fitness park	3
Zoo	Introduce a small zoo	1

THEME: Natural Environment

The natural environment is valued by some respondents. Submissions spoke to the importance of native flora and fauna (13). Three respondents suggested that concrete paths would be detrimental to the natural environment. Tree safety was also raised (3), suggesting strong winds are blowing down branches and some trees are too close to power lines. It was suggested that weed removal required in the area and also a suggestion to start a community garden in the space.

Table 10: Overview of comments regarding natural environment

Theme	Comments	No. responses
Trees are valued	There is a lot of wonderful native bush in the area	13
	The Plan should include tree planting on the northern side of Greenacre Road using species suited	

	Strongly oppose the concept of shared tracks... many trees and much of the undergrowth will have to be removed	
	Western sections of the Park should be landscaped	
	Confirm that tree protection and succession planting extends to the whole area.	
	It will disrupt native birds, flora, trees	
Tree Safety	Tree safety is a major issue – avoid using park in strong winds	3
	Street trees, more consideration on right tree in right place, powerline etc.	
Weeds removal required	Clearly issues such as weed and vermin control are required to protect this important community and ecological asset	7
	Clean up creek	
	The reserve is dense with weeds/lantana and requires a significant amount of work to remove such plants	
Community garden	Have a small garden on site and group would be interested in maintaining	1

THEME: Heritage

Heritage was considered important by eight respondents, appreciating the consideration the proposal made to heritage. Suggestions (2) were made to move the monument to a more prominent position and include a replica of a typical 19th century coal cart (1).

Table 11: Overview of comments regarding heritage

Theme	Comments	No. responses
Heritage is valued	Good to hear the historical features are to be maintained	8
	Mr Wiseman's monument deserves to be in a more prominent position, so that is welcome to place it closer to Gipps Street than its current location	
	Inclusion of a full size replica of a typical 19th century coal cart that would have been used on the Tramline	

THEME: Vehicles

Parking issues were raised by respondents (4) and suggestions made regarding possible improvements such as angled parking and formalising parking. Concerns were raised by three respondents regarding ongoing issues with vehicles and trail bikes entering the area and causing damage. A bus shelter was also suggested.

Table 12: Overview of comments regarding vehicles

Theme	Comments	No. responses
Parking issues need to be addressed	Angled parking on Gipps St, more parking needed	4
	Formalise angle parking along Vickery St adjacent to Wisemans Park	
	Need to review parking in Vickery and Gipps Road - angle parking?	
	Introduction of residential parking permits on Greenacre R	
Bus shelters	Install bus shelter at corner of park	1

Include preventative measures for vehicles and trail bikes access	It would be good to prevent trail bikers as they endanger everyone else and they adversely impact the grass/shrubs	3
-------------------------------------------------------------------	--------------------------------------------------------------------------------------------------------------------	---

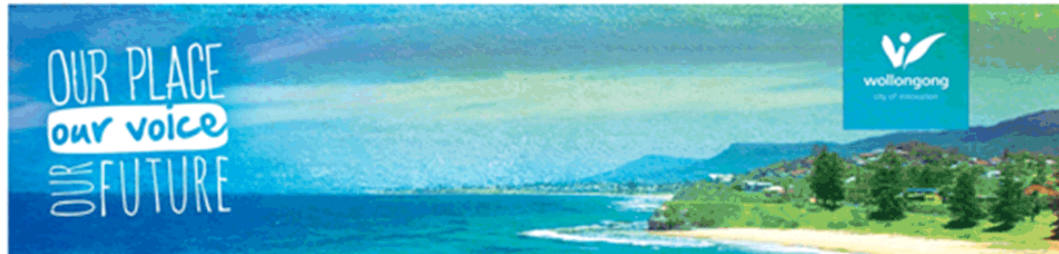
GENERAL COMMENTS

A range of comments were provided which are outside of the scope of the project. Table 13 provides an overview of these comments.

Table 13: Overview of comments outside of project scope

Theme	Comments
General comments	<p>Signs for picking up dog poo</p> <p>Mulch around trees,</p> <p>Stainless steel hangi (traditional Maori cooking pit) in the ground (south?) behind the toilet block (Weerona Wombats)</p> <p>Footpath needed on Greenacre Road</p> <p>Duck and wire issue</p> <p>Encourage the investigation of including an east-west bike path in Future developments of this corridor.</p> <p>Vandalism on Vickery Street</p> <p>Issues with school drop off/pick up</p> <p>Requested new line marking</p> <p>Oval requires levelling</p> <p>Current fence is not suitable</p> <p>Rubbish dumped in creek</p> <p>Drainage at Wiseman water fountain is poor</p> <p>Pedestrian access to Gipps Street</p> <p>Pedestrian crossing traffic lights be installed at the Robsons Road and Reserve St intersection</p> <p>Condition of Greenacre road is very poor, requires upgrades now</p> <p>Put barrier up to stop people parking on the children's crossing on Berkeley Rd.</p> <p>Slow down the traffic along Acacia St.</p> <p>Lollypop lady for our school</p>

Appendix 1: FAQ



Frequently Asked Questions Fairy Creek Master Plan

What area does the Master Plan apply to?

The site covered by the Master Plan is located approximately 2km from Wollongong's CBD, and is flanked by parks and reserves. The site covers an area of approximately 17.5 hectares, and extends from Wisemans Park on the east, then west along the former Keira Mine tramway track, and then south west to the F8 near Mt Keira Road as shown in Fig. 1: Locality Plan below.

Why is Council doing a Master Plan?

The purpose of preparing the Fairy Creek Master Plan is to provide a vehicle within which Council can undertake further site analysis work and engage with the community to elicit their ideas comments and stories about the future improvement of the Fairy Creek corridor. This process will lead to a final Master Plan that will identify ways to protect and enhance the natural areas of the reserve; propose improved and safer pathways and connections for pedestrians and cyclists; and suggest ways of maintaining and complementing the park areas and sporting facilities within the reserve.

What are some of the key features within the area of the Master Plan?

The study area is a unique strip of land and includes: a creek habitat; natural remnant forests including endangered ecological communities; many magnificent trees; grassed open areas; a storm-water detention structure; sporting facilities; tennis courts; and a public playground. The site also has historical significance as the former Mount Keira Tramway was located along a section of the study area. The old sandstone fountain in Wiseman's Park is listed as a heritage item. For details of the existing attributes and constraints along the corridor, refer to the "Site Analysis Report".

What is the key outcome being sought from the Master Plan?

Funding has already been allocated for the replacement of the amenities building in Wiseman Park, together with a pathway connection from Greenacre Road and Acacia Avenue. The Plan will

explore other opportunities to improve connectivity within the reserve for pedestrians and cyclists; identify sites for possible fitness stations and playgrounds; and recommend general improvements to the environment.

What is the community engagement process for Master Plan?

Council's engagement process seeks to involve the community in the design of the Fairy Creek Master Plan by inviting local stories that will inform the design process. A comprehensive community engagement process will be conducted between 30 April and 25 May 2018, and will include:

- A listing on Council's "Have Your Say" webpage.
- Information material including a Feedback Form placed at Council's Customer Service Centre and in the City Library.
- Postal notification of the proposal to residents adjacent the study area that will also include information material.
- Advertisements in the Advertiser.
- A Media Release and social media updates.

Will there be a Kiosk so that we can meet with Council officers to discuss the proposal?

Yes. An Information Kiosk will be held in Wiseman's Park on 12 May 2018 from 10.00am to 12.00pm. Council staff will also facilitate a walk along part of the corridor covered by the Master Plan – to register for the walk contact the Engagement Team on (02) 4227 7111.

Where can I get more information about the Master Plan?

Further information on this proposal can be obtained by contacting Council's Community Engagement Team at:

Phone: (02) 4227 7111

Fax: (02) 4227 7580

Email: engagement@wollongong.nsw.gov.au

Council Reference: Z18/68266

www.wollongong.nsw.gov.au

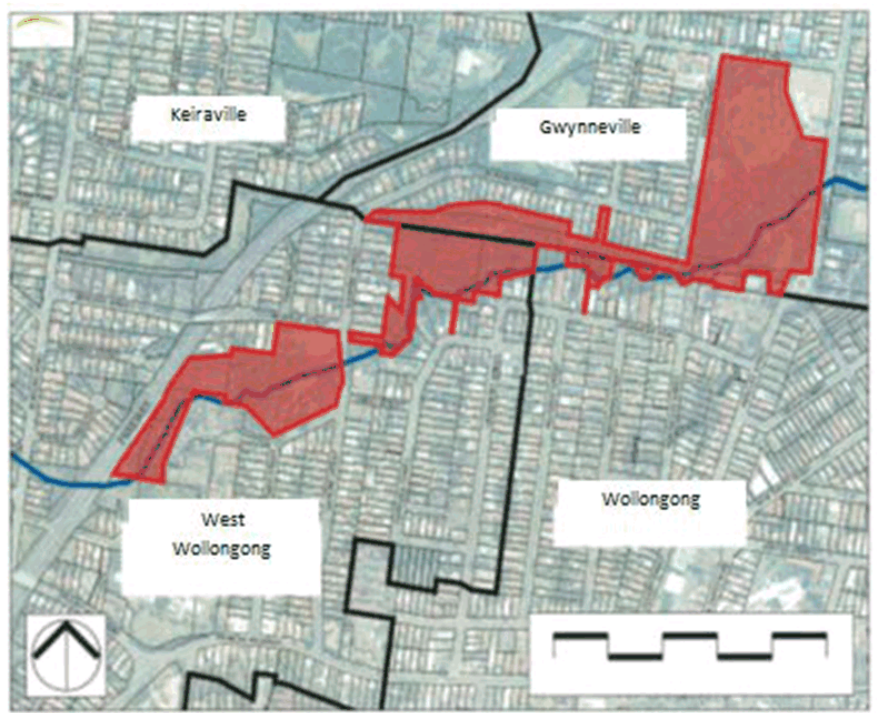


Fig. 1: Locality Plan

How can I have my say about the Master Plan?

The easiest way to provide your feedback on the proposed Fairy Creek Master Plan is to complete a Council Feedback Form, which is available at:

- Council's website, www.wollongong.nsw.gov.au.
- Council's Customer Service Centre
- The City Library

www.wollongong.nsw.gov.au

Appendix 2: Feedback Form



**OUR PLACE
our voice
OUR FUTURE**

**Fairy Creek Master Plan
Community Feedback Form**

Wollongong City Council is inviting you to Have Your Say on this proposal. Please read the Frequently Asked Questions sheet and Privacy Notification before making your submission.

All feedback must be received by 5pm on Friday 25 May 2018.

Preamble

The purpose of preparing the Fairy Creek Master Plan is to provide a framework within which Council can protect and enhance the natural areas of the site; provide improved and safer pathways for pedestrians and cyclists; and maintain and enhance the park areas and sporting facilities within the reserve. The engagement process seeks to involve the community in the analysis and design of the Master Plan, and invite residents to share local stories that will inform the design process.

Do you support the proposal to develop the Fairy Creek Master Plan?

- ☐ Yes
☐ No
☐ Unsure

Could you please take your time and share with us your ideas, comments and stories that we can include in the development of the Fairy Creek Corridor Master Plan.

Please return completed form to:

Wollongong City Council Community Engagement Unit
Locked Bag 8821
Wollongong NSW 2500
Telephone: 02 4227 7111
Facsimile: 02 4227 7580
Email: engagement@wollongong.nsw.gov.au

More overleaf...

www.wollongong.nsw.gov.au

www.wollongong.nsw.gov.au