

## Neighbourhood Forum 5

### Wollongong's Heartland



Coniston, Figtree,  
Gwynneville, Keiraville,  
Mangerton, Mount  
Keira, Mount St  
Thomas, North  
Wollongong, West  
Wollongong,  
Wollongong City.

#### Agenda for meeting at 7.00 pm Wed. 6th March 2019 in the Town Hall Ocean Room

- 1 Presentation. Kerry Hunt, WCC Director of Community Services on her work, with emphasis on the City Centre and the role of Neighbourhood Forums.
- 2 Apologies
- 3 Minutes of meeting of 6th February 2019 and matters arising.
- 4 Comments from residents, Councillors and/or Council staff.
- 5 Responses  
Town Hall Sharp Organ: see p 5  
Wollongong City Flood Study: see p 5  
Lowering of Gurungaty Causeway: see p 5  
Feasibility Study - JJ Kelly Park Land Form Modification: see p 6  
Footpath – Eastern Side of View Street: see p 6
- 6 Reports  
Air Conditioners: **see rec p 6**  
Parking for Disabled Users of the Continental Pool: see p 7  
Council On-call Clean-up Service for Multi Unit Dwelling: see p 7  
Keiraville Village Streetscape Upgrade Plan: see p 8  
Fairy Creek Corridor Master Plan: see p 9  
draft Beach & Foreshore Access Strategy: see p 9
- 7 Projects  
Keiraville/Gwynneville: see p 10  
North Wollongong: : **see rec p 10**  
South Wollongong & City Centre: see p 10  
Neighbourhood Forums Alliance: **see rec p 10**
- 8 Planning DAs: **see recs p 11**
- 9 General Business:
- 10 Snippets see p 12

**Next Meeting: 7.00 pm on Wed. 3rd April 2019, Town Hall Ocean Room.**

---

**Current active membership of Neighbourhood Forum 5 : 388 households**

---

**Neighbourhood  
Forum 5**

**Wollongong's  
Heartland**



**Coniston, Figtree,  
Gwynneville, Keiraville,  
Mangerton, Mount  
Keira, Mount St  
Thomas, North  
Wollongong, West  
Wollongong,  
Wollongong City.**

**Minutes of meeting at 7.00 pm Wed. 6th February 2019 in the Town Hall Ocean Room**

Present 16 members and Councillor Tania Brown

- 1 Presentation. Chris Stewart was thanked for his presentation on Planning the City.
- 2 Apologies
- 3 Minutes of meeting of 5th Dec 2018 were confirmed with no matters arising.
- 4 Comments Councillor Tania Brown offered to follow through on a number of issues raised by members.
- 5 Responses **Disabled Parking at Continental Pool:** noted  
**Travel Times on South Coast Line:** noted  
**Community Participation:** noted
- 6 Reports **Genelle Thomson:** noted  
**draft Creative Wollongong 2019 - 2024:**  
It was agreed that the draft Creative Wollongong proposals be supported and Council be congratulated on this initiative, but to express regret that there is no reference to the Town Hall's Sharp Organ.  
**draft Public Toilet Strategy:**  
It was agreed that Council be requested to:
  - 1 increase substantially the content and value of the strategy by spelling out the criteria they propose to use when setting priorities for new and upgraded facilities;
  - 2 ensure these include a high priority for public places in and around the city centre.

---

**Current active membership of Neighbourhood Forum 5 : 383 households**

---

### **Air conditioners**

It was agreed to defer this item.

### **Pedestrian Plan:**

It was agreed that Council be requested to advise on their latest process and timetable for the City-wide Pedestrian Plan and specifically that it:

- 1 incorporates the City for People Implementation Plan;
- 2 gives priority to the footpaths in Crown Street east from the hospital.

### **Hanson quarry output and Mt Ousley road issues**

It was agreed that Ryan Park MP be requested to make representations on our behalf to the relevant Ministers (roads, and planning).

## 7 Projects

### **Keiraville/Gwynneville**

It was agreed that Council be requested to advise on their latest timetable for the Keiraville/Gwynneville Access Study.

### **North Wollongong footpath:**

It was agreed that, in the light of significant community involvement, Council be requested to include in the 2019-20 works programme a footpath on the eastern side of View Street between Gipps and Edward Streets.

### **South Wollongong & City Centre:**

It was agreed that Council be requested to advise on their latest timetable for the flood studies in South Wollongong.

**Neighbourhood Forums Alliance:** noted

## 8 Planning

### **DA/2018/1518 Dual Occupancy 84 Figtree Crescent, Figtree**

It was agreed that the submission of support be endorsed.

### **DA/2018/1520 Dual Occupancy, 31 Valley Road, Figtree**

It was agreed that the submission of objection be endorsed.

### **DA/2018/1484 24 units 5 stories, c/o Mercury & Bligh Sts W'gong**

It was agreed that the submission of support be endorsed.

### **DA/2018/1604 Dual Occupancy 4 Thames St, W. Wollongong**

It was agreed that a submission of support be lodged.

### **DA/2018/1543 Place of Public Worship, 95 O'Briens Road, Figtree**

This item lapsed, so no submission will be made.

### **DA/2019/15 Dual Occupancy 62 Princes Highway, W Wollongong**

It was agreed that a submission of support be lodged.

### **DA/2018/1630 11 units at 35 Yellagong St W, Wg**

It was agreed that another submission of objection be lodged.

**DA/2018/1625 33 lot Subdivision, Redgum Forest Way, Figtree**  
It was agreed that a strong submission of objection be lodged.

**DA/2018/1638 38 units in 14 stories 71-77 Kembla St, Wollongong**  
It was agreed that:

- 1 objection be lodged as to height of the building in its context;
- 2 strong objection be lodged to removal of trees in Kembla St;
- 3 concern be lodged at the apparent limited notification.

**DA/2018/1620 Boarding House, 47 Staff St Wollongong**  
It was agreed that a submission of support be lodged.

9 General Business: **Wollongong Harbour**

Members were advised that a tender has been let for the re-institution and management of the slipway.

10 Snippets noted

**Next Meeting: 7.00 pm on Wed. 6th March 2019, Town Hall Ocean Room.**

## **5 Responses      Town Hall Sharp Organ**

"The Merrigong Theatre Company (MTC) has advised that as a highly valued community asset, the playing of the pipe organ at the Town Hall is carefully planned and monitored. The organ continues to be currently played by volunteer organists a minimum of once a week. During 2018 there were 73 practice sessions conducted. This year a new musician learning to play the organ is also participating in practice sessions.

MTC has also advised that whilst there is not a huge call for organ recitals and concerts, the organ is utilised at both specifically promoted organ recitals, and/or as part of a broader program. During January 2019 the organ was used at two events, one of which was the Australia Day celebration. At this point, the Illawarra Choral Society has made a booking for December for Handel's Messiah where the organ is used.

City Centre Activation Manager (Acting)

### **Wollongong City Flood Study**

"The review is progressing well and Council has recently received a final draft report from the consultant. The Office of Environment and Heritage and Council officers are currently reviewing the report to ensure it is technically sound.

Once the technical comments are addressed by the consultants, the draft report will be presented to the Central Floodplain Risk Management Committee to support public exhibition of this document; which we expect would occur in May/June 2019. "

Manager Infrastructure Strategy and Planning

### **Lowering of Gurungaty Causeway**

"In consultation with NSW Ports and State Government Agencies, Council has completed the detailed design and review of environmental factors for this project. Just before Christmas, Council was advised that its application for grant funding under the State Government Flood Management Program to undertake the works was successful.

NSW Ports is also supportive of the project. An agreement is currently being developed to confirm that NSW Ports will manage the works on their asset and ensure the environmental safeguards identified in the review of environmental factors are implemented during construction. Works are expected to be completed in the next 8 months, weather permitting."

Manager Infrastructure Strategy and Planning

### **Feasibility Study - JJ Kelly Park Land Form Modification**

'This study is progressing well. Prior to Christmas, field work occurred to collect soil samples from the area. Laboratory work to analyse the samples is currently in progress to assess the waste classification. The cost associated with soil treatment and safe disposal will affect the viability of this project.

A few options to provide more flood storage by lowering some areas are being developed by the consultant. We expect to have a final report with cost estimates and cost benefit analysis by November 2019, at which point we will share the findings of this project with the community.

Manager Infrastructure Strategy and Planning

### **Footpath – Eastern Side of View Street**

"A footpath on the eastern side of View Street is currently proposed for design in the 2020/21 Financial Year for construction in the 2021/22"

Manager Infrastructure Strategy and Planning

## **6 Reports**

### **Air Conditioners**

Currently there is a problem with noisy air conditioners. Council's Enforcement Policy assumes this is a civil matter and should be dealt with accordingly by the complainant. However, State Planning Legislation exempting air conditioners from requiring development consent is quite clear. They must be designed so as not to operate:

- (i) during peak time—at a noise level that exceeds 5 dB(A) above the ambient background noise level measured at any property boundary, or
- (ii) during off peak time—at a noise level that is audible in habitable rooms of adjoining residences.

These are pretty stringent requirements which seem to be routinely ignored. Council's DCP is of little help.

Jane Chalker

### **Recommendations**

Council be requested to:

- 1 add an objective to clause 4.12 of the DCP to preserve the amenity of adjoining residents.
- 2 add to clause 4.12 of the DCP a definition of peak time for the purposes of controlling noise levels from air conditioners and that, only in the most extraordinary circumstances will noise levels in excess of those defined by State Legislation be approved; and
- 3 provide adequate resources to ensure that noise levels from air conditioners comply with the legislation and to take appropriate enforcement procedures when they do not.

### **Parking for Disabled users of Continental Pool**

Residents at NF5 meeting in Dec raised significant concerns about the decision by Council staff, prior to re-opening the tramway path in mid 2018, to remove access and parking for disabled regular users at Continental Pool after 40 years without problems, and requested this be re-instated. Council staff replied, and it is appreciated that “robust” discussions were held on 24 Jan and 21 Feb with Council’s Director, relevant Managers, representatives of pool users and NF5. The current position is understood to be:

1. We suggested a compromise involving a Trial period (say 6 months) for authorised disabled regular users (say 15) to receive conditional “Vehicle Entry Permits” (VEP are used in the Mall) to enable drop-off and/or use of the 2 or 3 authorised parking spaces at the pool (not Mobility spaces)  
Council staff said they will consider this proposal after they have analysed data from CCTV cameras which are due to be connected to existing cabling (by May 2019)
2. Council staff have decided to construct 2 mobility spaces on east side of Cliff Road about 200 metres from the pool (by May 2019)
3. Council staff have decided to investigate providing additional seating behind the western kerb of the shared path between the southern entrance and existing benches on the eastern side near the beach (by late 2019)
4. Council staff will advise proposals to manage shared path safety problems involving pedestrians, cyclists and others after they have analysed CCTV camera data (by May 2019)

### **Council On call Cleanup Service for Multi Unit Dwelling blocks**

At NF5 meeting 6 Feb 2019 a resident raised concerns that the collection contractor advised they have been instructed by Council to limit Multi Unit Dwelling (MUD) blocks with more than 8 units to only 2 On call Cleanup collections pa, each of maximum 2 cubic metres (m<sup>3</sup>). The resident lives in a block of 15 units, where 9 units are tenanted by “potentially mobile” young people/students.

Concerns include:

- 1 more than 2 collections pa are necessary because students vacate at various times;
- 2 if only 2 collections are provided it is most likely there will be increased illegal dumping mess, safety issues and additional costs to Council;
- 3 for example, limiting to 2 collections pa would result in one unit in the 300 plus redevelopment of Dwyers site Corrimal St receiving the equivalent of 13 litres for Cleanups pa (ie about 10% of a 120 litre bin), not the 4m<sup>3</sup> the Domestic Waste Management Charge (DWMC) covers;

- 4 unit owners pay the DWMC for 120 litre bin yet this practice denies them the same level of service re Cleanups received by other residents where the same DWMC is paid;
- 5 a call to Council resulted in advice that it's a matter for Remondis to resolve.

After NF5 meeting details were provided to Council staff requesting clarification. It is understood the relevant Manager was appointed in November 2018, whereas this practice has been in place for some time, so we look forward to constructive discussions and equitable resolution, which will then be reported to a NF5 meeting.

### Keiraville Village Streetscape Upgrade Plan

Designs have been prepared for streetscape and road upgrade works at Gipps Road between Grey Street and William Street, Keiraville to improve pedestrian access and public amenity. The plan includes:

- 1 Replacing the existing worn coloured asphalt with unit paving and black asphalt in front the main row of shops on Gipps Road, between Grey and William Streets. The unit paving was selected for its resistance to damage from chairs and tables.
- 2 Installing a new raised pedestrian crossing to replace the existing level crossing.
- 3 Installing new accessible ramps at the intersection of Gipps Road and Grey Street.
- 4 Replacing two trees in very poor health in front of the shops.
- 5 Pruning hedges around the crossing to improve visibility.
- 6 Installing new bike loops.

Works will be completed within the 2019/20 financial year. Access to shops will be maintained. Traffic control will be in place during raised crossing construction. There will be intervals where access to the footpath and Gipps Road will be restricted. Signs will alert pedestrians and drivers of any restrictions, including when street parking will not be available. To minimise impacts on businesses, access to shops will be maintained using temporary paths and staging works appropriately.

Engagement Officer





### **Fairy Creek Corridor Master Plan**

A draft Management Plan was prepared by NF 5 in 1995 and a more substantive Master Plan 2012. Council then prepared a draft Master Plan which was exhibited mid 2018. The NF 5 executive has been briefed on the final plan which is expected to go to Council on 11th March. Nearly all the substantive proposals in the 2012 plan have been included and detailed.

### **draft Beach & Foreshore Access Strategy**

The draft Strategy is on public exhibition until 18 March. It is a 13 page glossy production. In 2016 Council developed a Disability Inclusion Action Plan in response to the introduction of the NSW Disability Inclusion Act. A consistent message from the community consultation was that people with a disability wanted improved and easier access to Council's recreational services and facilities. It is noted that 85% of Australians live within 50km of the coast, and 20% of Australians have some type of disability or have some difficulty getting down to the water.

Austinmer, Thirroul, North Wollongong and Port Kembla are the 4 beaches identified as initial priorities for access improvements.

The Strategy proposes to:

- 1 Improve safe and accessible beach and foreshore access;
- 2 Provide relevant and current access information about our beaches and foreshores;
- 3 Work with partners in improving beach access.

As part of improving access, the Strategy includes:

- 1 ensure disability access is part of the assessment criteria for capital works projects;
- 2 develop a priority list of capital works with cost estimates to improve beach access in each planning district;
- 3 develop concept designs for Austinmer, Thirroul, North Wollongong and Port Kembla Beach that consider accessible parking, amenities, ramps, connectivity and shade;
- 4 improve accessibility at foreshore bus stops;
- 5 develop a program of footpath upgrades that connect public transport drop off points to beach;
- 6 undertake 'quick links' audit to identify small projects that create connectivity links;
- 7 implement the priorities of Council's Public Toilet Strategy including installing lift and change tables at Austinmer, Thirroul and Port Kembla beaches;
- 8 audit foreshore parking with the aim to increase accessible parking and parking bays with views to the beach/water;
- 9 undertake a shade, seating and shelter audit of patrolled beaches;
- 10 ensure door widths on accessible amenities accommodate a beach wheelchair;
- 11 explore external funding opportunities to improve access.

The Strategy proposals are laudable and presumably a detailed Action Plan identifying tasks, estimated costs, sources of funding and timing will be provided in due course

John Riggall

## 7 Projects **Keiraville/Gwynneville**

"Draft strategies have been prepared and should be sent to NF 5 and the University of Wollongong for comment by the end of March. A draft study document will then be prepared for Council and community comment"

Transport and Stormwater Services Manager

### **North Wollongong**

Local open space standards suggest a pocket park of 0.4 ha per 1000 population serving people within 400m. The diagram shows the area on Smith Hill which is roughly more than 400 metres from open space, although some of that space is of dubious value. The View Street exercise showed that residents do not like micro-parks, so larger areas are required.



Within this area it is estimated that there are now about 3,600 people yielding a theoretical need for a local park of about two house lots. In 1949 there were about 1,200 people but nearly all of them had private gardens. No extra open space has been provided since then but the population has tripled and Council has collected at least a m\$1 in contributions over that period yet nothing has been spent on open space when an area of at least a hectare is justified.

David Winterbottom

#### Recommendation

Council be requested to assess the demand for local open space in the Smiths Hill area and identify an area to be developed for local open space.

### **South Wollongong & City Centre:**

Some of the drainage issues are reported in Responses above.

### **Neighbourhood Forums Alliance**

A workshop/meeting has been set down for 6.00pm on Monday 11th March in the Wollongong City Library meeting room.

#### Recommendation

Members who have not yet received an agenda, and would like one, please let the secretary know.

## 8 Planning

### DA/2019/71 Multi-dwelling houses, 46 Mathew St Wollongong

6th March

This is a proposal for three two storey houses. They are well below the floorspace limit and comply with all Council requirements save minor and acceptable setbacks to the front and part of a side boundary. It complies with our Fairy Meadow Locality Plan. However the street frontage leaves something to be desired.



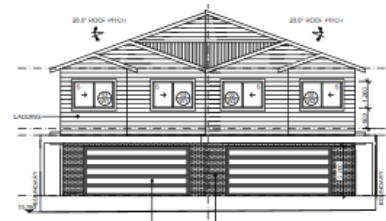
#### Recommendation

That a submission of support be lodged subject to Council reviewing the elevation to the street.

### DA/2019/146 Dual Occupancy 10 Mallangong Close Figtree

11th March

This is a proposal for a two storey dual occupancy in a small close in a new subdivision remote from services. It does not comply with requirements for private open space width of garages or crossover width. It is totally out of character with normal detached houses (judge for yourself) and does not comply with our Locality Plan for Figtree.



#### Recommendation

That a submission of objection be lodged.

## 9 General Business

## 10 Snippets **Streets can be fun**

An aspect of European cities that impresses is the thought and imagination that goes into some of their street design, especially with regard to street furniture. Our street lighting, cycle racks and so on tend to be utilitarian, while their European equivalents are often original and occasionally witty.

I particularly liked the sewer worker emerging from a manhole in Bratislava (pictured), which, I guess, would give the average health and safety officer apoplexy even if anyone had been brave enough to propose it in the first place. Again, Bratislava has given a neat touch to its cycle racks by flanking them with penny-farthing replicas which kids can sit on and pedal. If place-making is the new mantra, then this kind of quirky design is just what is needed to bring humour and individuality to our towns and cities.

Paul Burall

