

WOLLONGONG CITY COUNCIL

Traffic Committee Agenda

26 April
2022



TUESDAY 26 APRIL 2022
9.15 AM

PURPOSE OF MEETING

The City of Wollongong Traffic Committee is not a Committee of Wollongong City Council however a Technical Committee of Transport for NSW (TfNSW). The Committee operates under the authority conferred to Council by TfNSW under the Transport Administration Act 1988. Council has resolved to manage the Traffic Committee under a Charter which sets out the membership, timelines for the preparation of the Agenda and the distribution of Minutes, in accordance with TfNSW (previously RMS) document 'A guide to the delegation to councils for the regulation of traffic' (including the operation of Traffic Committees).

Council has been delegated certain powers, from TfNSW, regarding traffic matters upon its local roads. A condition of this delegation is that the General Manager will approve the minutes under delegated authority.

There are four permanent members of the Traffic Committee, *each of whom has a single vote only.*

- The members are representatives of the NSW Police Force, Transport for NSW, the Local State Member of Parliament (for the location of the issue to be voted upon), and a representative of Wollongong City Council.
- If TfNSW or NSW Police Force disagrees with any Traffic Committee recommendation, that member may lodge an appeal with the Regional Traffic Committee for determination. The appeal must be lodged in writing within 14 days of the Minutes being published on the Council's website. Any action relative to any issue under appeal must cease until the matter is determined. The Regional Traffic Committee is chaired by an independent chairperson and submissions and representations are welcomed from all interested parties.

INDEX

ITEM	PAGE NO.
1	STANDING AGENDA ITEMS 4
1.1	Welcome.....4
1.2	Acknowledgement of Country4
1.3	Declarations of Interest4
1.4	Apologies.....4
1.5	Confirmation of Minutes Arising from Previous Minutes4
1.6	Business Arising from Previous Meeting.....4
2	GENERAL BUSINESS 4
2.1	COLEDALE, Cliff Street – Ward 1 – Perpendicular parking location – St James Park along Cliff Street.....4
2.2	TARRAWANNA, Caldwell Avenue – Ward 1 – 2-hour timed restricted parking4
2.3	WEST WOLLONGONG, Yellagong Street – Ward 2 – Installation of 15-minute timed parking restriction5
2.4	WOLLONGONG, Smith Street – Ward 2 – No Parking restriction.....5
2.5	CORRIMAL, Robson Street – Ward 2 – No Stopping restrictions5
2.6	CONISTON, Heaslip Street – Ward 2 – No Stopping restrictions.....6
3	REGULATION OF TRAFFIC 13
3.1	WOLLONGONG, Stanwell Park Beach Reserve to MacCabe Park – Ward 2 – Bloody Long Walk 2022 13
3.2	WOLLONGONG, Kembla Street – Ward 2 – Tower Crane removal 13
4	DESIGN MATTERS.....33
4.1	BULLI, Blackall Street – Ward 1 – New pedestrian refuge33
4.2	WOONONA, George Tate Close – Ward 1 – New shared pathway33
4.3	WOLLONGONG, Allan Street – Ward 2 – Blisters/Kerb Extensions34
4.4	GWYNNEVILLE, Foley Street – Ward 2 – Proposed blisters, signage and line marking34
4.5	KANAHOOKA, Kanahooka Road – Ward 3 – Repair to damaged sections of shared pathway35
5	DOB IN A HOON (SPEED COMPLAINTS).....45
6	INFORMAL MATTERS.....45
6.1	WOLLONGONG LGA, Various Locations – Ward 1, 2 and 3 – UCI.....45

1 STANDING AGENDA ITEMS

1.1 Welcome

1.2 Acknowledgement of Country

"We pay our respects to and acknowledge the traditional custodians of Dharawal Country, the land on which we meet, and pay our respects to Elders past, present and those emerging. We also extend our respects to Aboriginal and Torres Strait Islander people present here today."

1.3 Declarations of Interest

1.4 Apologies

1.5 Confirmation of Minutes Arising from Previous Minutes

1.6 Business Arising from Previous Meeting

2 GENERAL BUSINESS

2.1 COLEDALE, Cliff Street – Ward 1 – Perpendicular parking location – St James Park along Cliff Street

BACKGROUND

Council's executive team recently met with several residents at St James Park along Cliff St, Coledale to discuss the use of the perpendicular parking at this location. There were several boats and caravans permanently parked at this location and it was observed that these would impact access to visitors in the area. Therefore, the use of restricted parking was discussed as a solution to the parking issues at this location.

CONSULTATION

Consultation to be undertaken with the nearby tennis club, affected residents and any sporting association/s using the sports field.

PROPOSAL

See attached plan. Install three 4-hour restricted parking signs (R5-4) along the perpendicular parking location at St James Park, Coledale. The 4-hour parking is to be timed 8am to 5pm. The mobility parking spot is to remain unrestricted.

2.2 TARRAWANNA, Caldwell Avenue – Ward 1 – 2-hour timed restricted parking

BACKGROUND

Council has received a Customer Request from a business owner requesting to have time restricted parking investigated on Caldwell Avenue in Tarrawanna. The intersection on Caldwell Avenue and Meadow Street is a small commercial Hub for the local and surrounding communities with cafes, restaurants, hairdressers, brewery and a real estate agent. Due to long term parkers impacting local businesses and residents parking along the length of Caldwell Avenue close to the Meadow Street intersection, it proposed to install 2-hour parking on Caldwell Avenue near the intersection of Meadow Street to support local business and parking turnover. This also aims to reduce the need for delivery trucks to park illegally in Bus and No Stopping zones.

CONSULTATION

Consultation has been carried out with surrounding businesses and residents prior to being raised with the Traffic Committee. Any business who has not responded will receive a follow up phone call.

PROPOSAL

See attached plan. To install 2-hour time restricted parking on either side of Caldwell Avenue near the intersection with Meadow Street. The northern side covers 3 car spaces over a 22m distance. The southern side covers 3 car spaces over an 18m distance.

2.3 WEST WOLLONGONG, Yellagong Street – Ward 2 – Installation of 15-minute timed parking restriction

BACKGROUND

Council have been approached by the convenience store at 43 Yellagong Street, West Wollongong, regarding lack of direct parking space available to their customers. There are customers who are unable to find a parking spot and find it difficult to walk a long distance. Some vehicle owners tend to park extended hours, impacting the access for customers of the shop. A 15-minute timed parking restriction outside the shop frontage will likely resolve this issue.

CONSULTATION

Consultation has already been undertaken.

PROPOSAL

See attached plan. Provide a 15-minute timed 8:30am to 6:00pm Monday to Friday and 8:30am to 12:30pm Saturday, outside the convenience shop frontage at 43 Yellagong Street.

2.4 WOLLONGONG, Smith Street – Ward 2 – No Parking restriction

BACKGROUND

Council received a request from the occupant of 40 Smith Street, Wollongong for action to address the difficulty of residents entering and exiting their property at 40 Smith Street, Wollongong since the installation of the pop-up cycleway in the street. As the driveway to 40 Smith Street does not have wings as other driveways do in the street, vehicles parking close to the driveway edge affect the movement of vehicles to/from the driveway significantly more than other driveways in this area.

The pop-up cycleway project involved changing the street to one-way traffic including installation of on street parking spaces in what was previously the westbound travel lane. Prior to the pop-up cycling facility being in place eastbound entry and exit manoeuvres at 40 Smith Street would track into the westbound travel lane.

A No Parking zone extending 1m beyond the driveway to 40 Smith Street in both directions is proposed to provide sufficient turning space similar to other residential driveways in the street.

CONSULTATION

Consultation has occurred with the resident of 40 Smith Street, Wollongong.

PROPOSAL

See attached plan. Install No Parking zone extending 1m both sides of the driveway of 40 Smith Street, Wollongong.

2.5 CORRIMAL, Robson Street – Ward 2 – No Stopping restrictions

BACKGROUND

On school days from 3:00pm to 3:30pm, there is a queue of drivers on Rosalia Lane associated with St Columbkille's Catholic Primary School in Corrimal. These cars then move onto Robson Street, with many turning left to access the Princes Highway or Rothery Street.

On Robson Street, approximately 43m from the Princes Highway traffic lights, there is a postal box. Cars are parked between the Princes Highway and Festivus Lane at this time. These parked cars cause major traffic congestion during school pickup times.

Due to cars parking between Princes Highway and Festivus Lane from Monday to Friday 3:00pm to 3:30pm, only three to four cars can access the Princes Highway or Rothery Street at a time. This interrupts the steady flow and safety of queuing vehicles. Cars are then banking up in Rosalia Lane, causing congestion in Cox Lane.

CONSULTATION

Consultation with 83 Robson Street, Corrimal, and St Columbkille's Catholic Primary School, Corrimal, is to take place prior to installation.

PROPOSAL

See attached plan.

- Install No Stopping restrictions on the northern side of Robson Street, west of the Princes Highway for approximately 35m.
- Install No Stopping (Australia Post Vehicles Excepted) between Festivus Lane and the No Stopping restriction.

2.6 CONISTON, Heaslip Street – Ward 2 – No Stopping restrictions

BACKGROUND

A Wollongong City Council (WCC) Park Maintenance employee has requested that access be maintained to the Council Park off Heaslip Street for lawn cutting. Currently, residents park close or in-line with the hill, which creates a safety concern for WCC Park Maintenance employees.

WCC Park Maintenance team only operate in a small window of 7:00am to 2:00pm, allowing for sufficient residential parking outside of these hours.

CONSULTATION

Consultation with 78 and 76 Heaslip Street, Coniston, is to take place prior to installation.

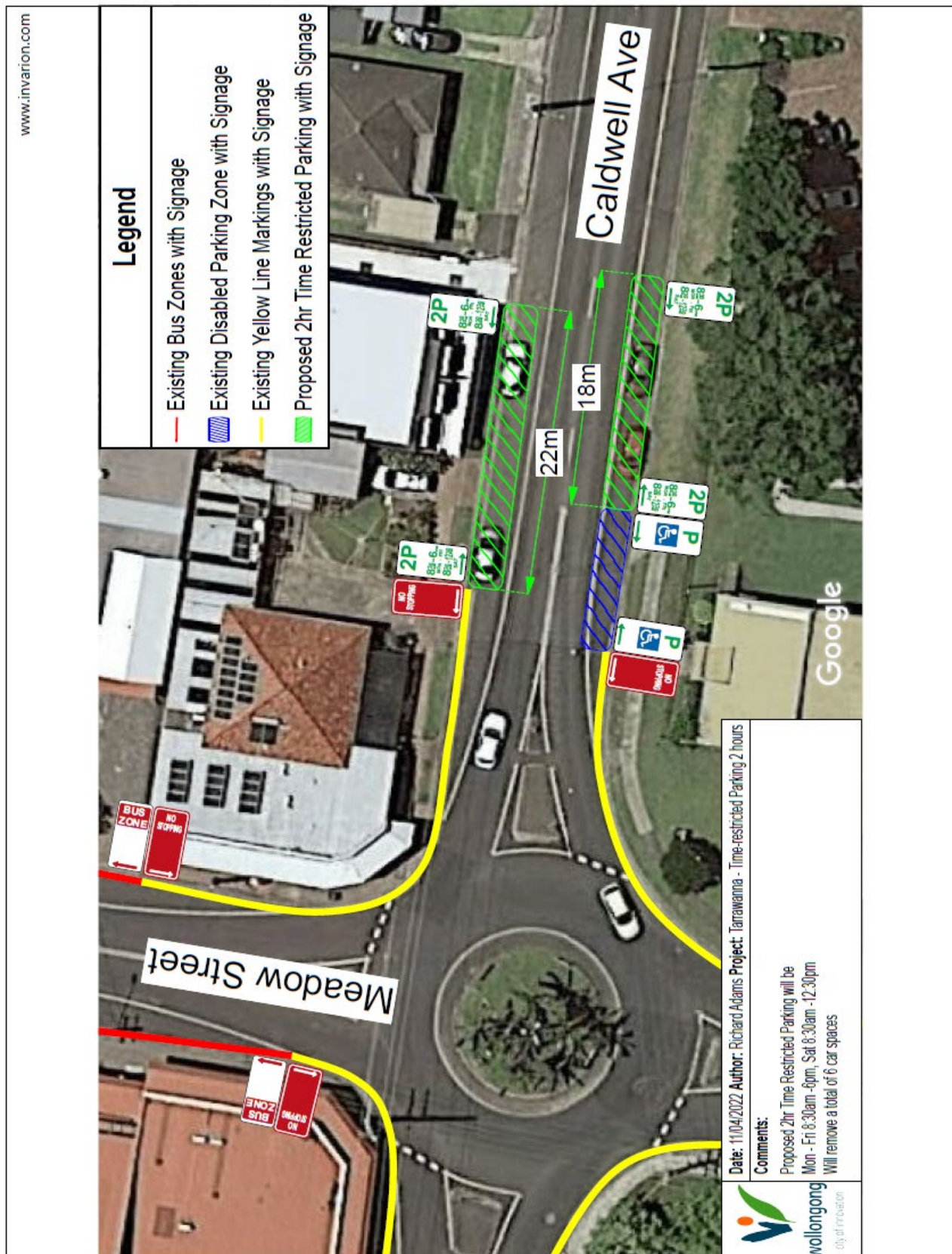
PROPOSAL

- Install No Stopping restrictions across the access to the park between 78 and 76 Heaslip Street, Coniston.

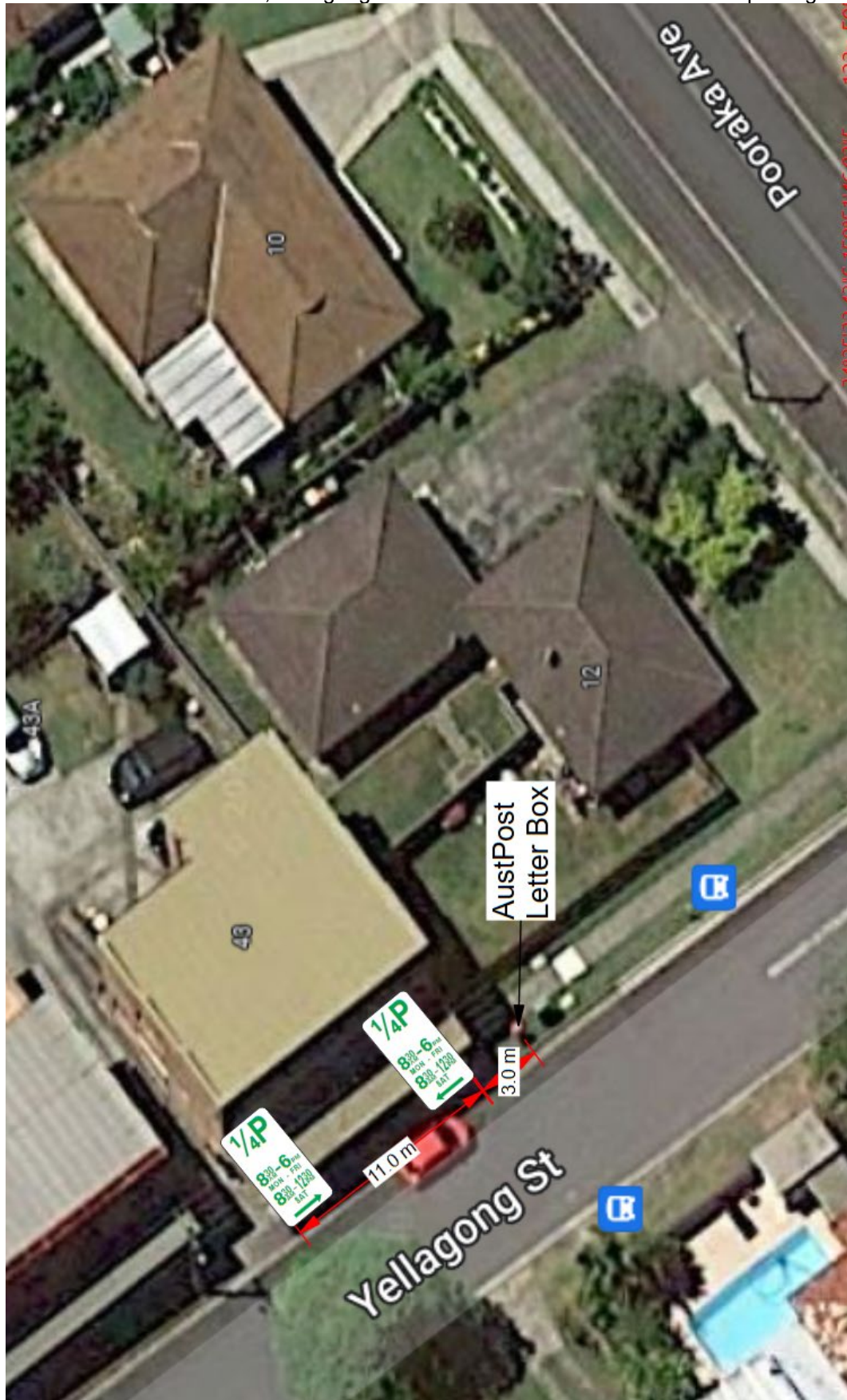
Item 2.1 - COLEDALE, Cliff Street – Perpendicular parking location – St James Park along Cliff Street



Item 2.2 - TARRAWANNA, Caldwell Avenue – 2-hour timed restricted parking proposal



Item 2.3 - WEST WOLLONGONG, Yellagong Street – Installation of 15-minute timed parking restriction



Item 2.4 – WOLLONGONG, Smith Street – 40 Smith Street No Parking restriction



Item 2.5 - CORRIMAL, Robson Street – No Stopping restrictions



Item 2.6 - CONISTON, Heaslip Street – No Stopping restrictions



3 REGULATION OF TRAFFIC

3.1 WOLLONGONG, Stanwell Park Beach Reserve to MacCabe Park – Ward 2 – Bloody Long Walk 2022

BACKGROUND

The Bloody Long Walk is a 35km challenge raise funds to cure mitochondrial disease (Mito). Participants can walk, jog or run from Stanwell Park Beach Reserve to Wollongong CBD while raising funds to help find a cure for Mito.

The event is scheduled to take place on Sunday 26 June 2022 with a start time of 7am, commencing from Stanwell Park Beach Reserve and finishing at MacCabe Park, Wollongong.

Approximately 900 people will be participating in the event, with the walkers leaving in groups of 150 at 5-minute intervals. The event is not proposing to close any roads, but rather is using controllers to allow safe crossing for participants.

Station Street access to Stanwell Park Beach Reserve will be part-closed to vehicles for parking during the hours of 5:00 and 10:30am. Traffic controllers will be on point at each check point to ensure no unauthorised vehicles enter and park in the event marshalling area. Closures will be placed at the north-east corner of the Stanwell Park Beach Reserve carpark, leaving this section of carpark unaffected by any control measures. Station Street will not be closed but will have managed access into the carpark. Between these part closures is a designated area where participants can be dropped off via private vehicles or the event-supplied shuttle bus which travels in an attempt to alleviate cars at the starting point.

CONSULTATION

The event operator would provide information to the community/residents who may be affected by the event.

PROPOSAL

The Traffic Committee consider the proposed event and approval be granted based on the submitted Traffic Control Plans.

3.2 WOLLONGONG, Kembla Street – Ward 2 – Tower Crane removal

BACKGROUND

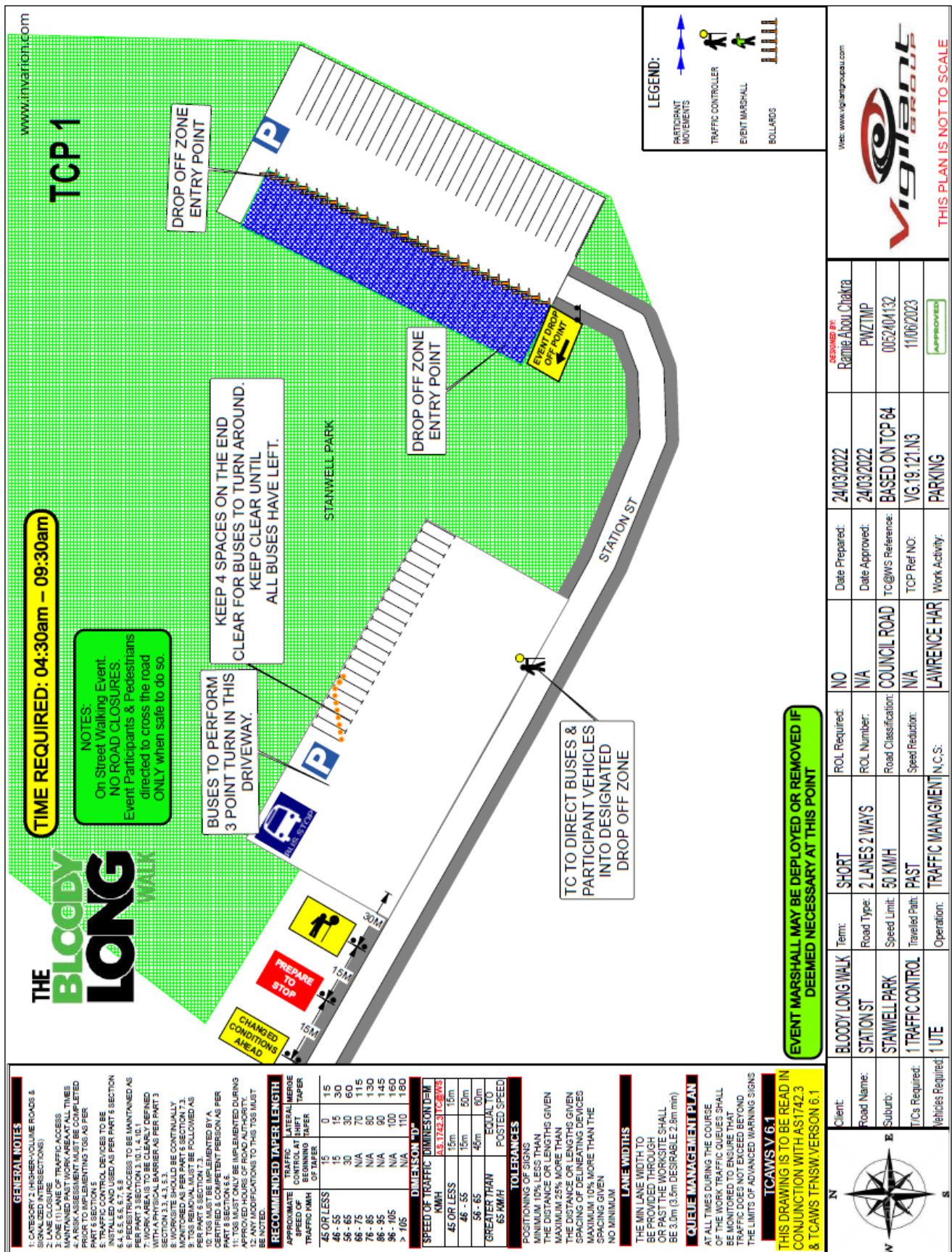
Traffic Logistics have made application for a road closure approval for Pupovac Constructions for the dismantling of the tower crane at Lang's Corner, with a date range of Friday 20 May 2022 to Saturday 21 May 2022 or Saturday 27 May 2022 to Sunday 28 May 2022, subject to weather conditions. In the event of unfavourable weather, they have nominated Wednesday 1 June 2022 to Saturday 4 June 2022 as back-up dates.

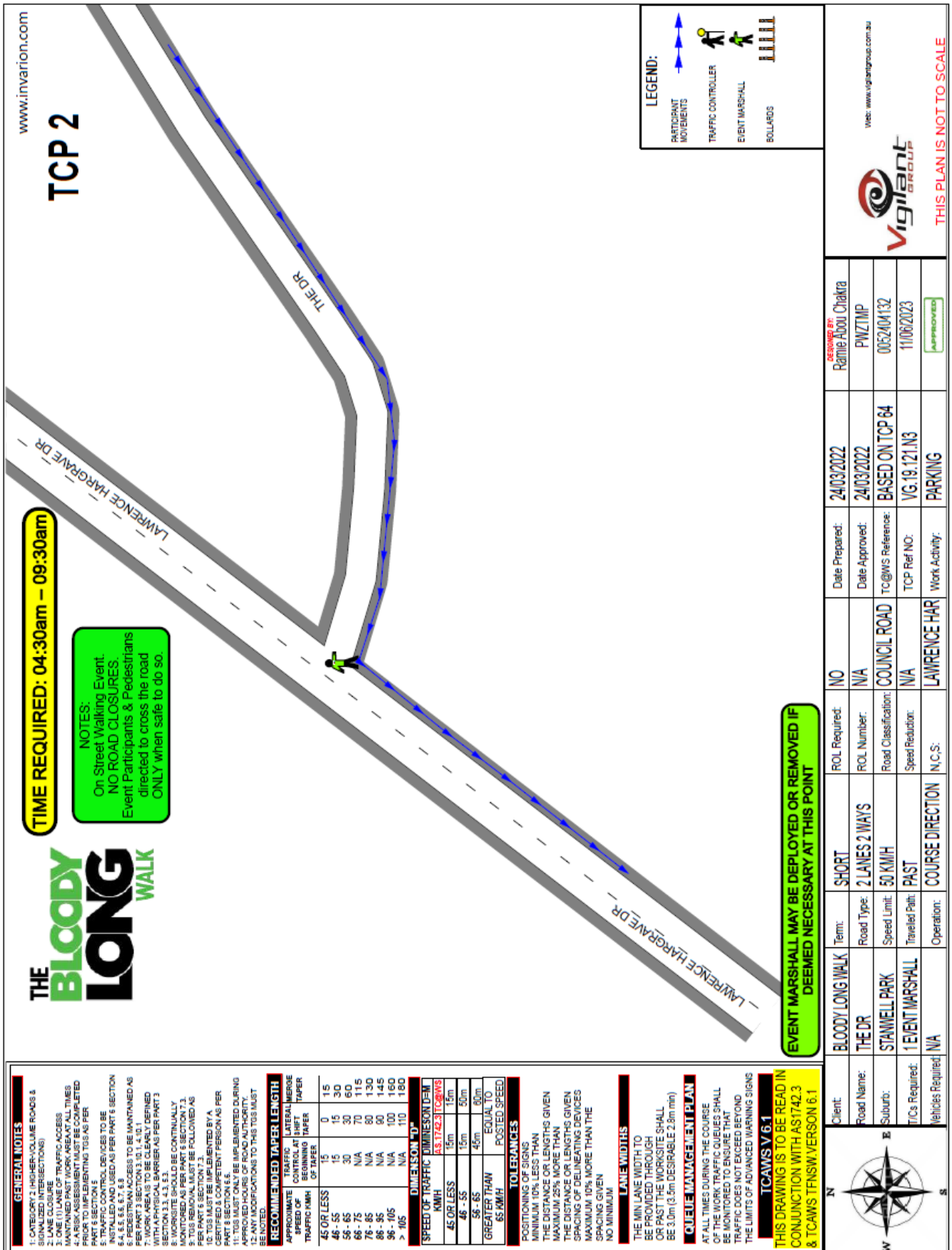
CONSULTATION

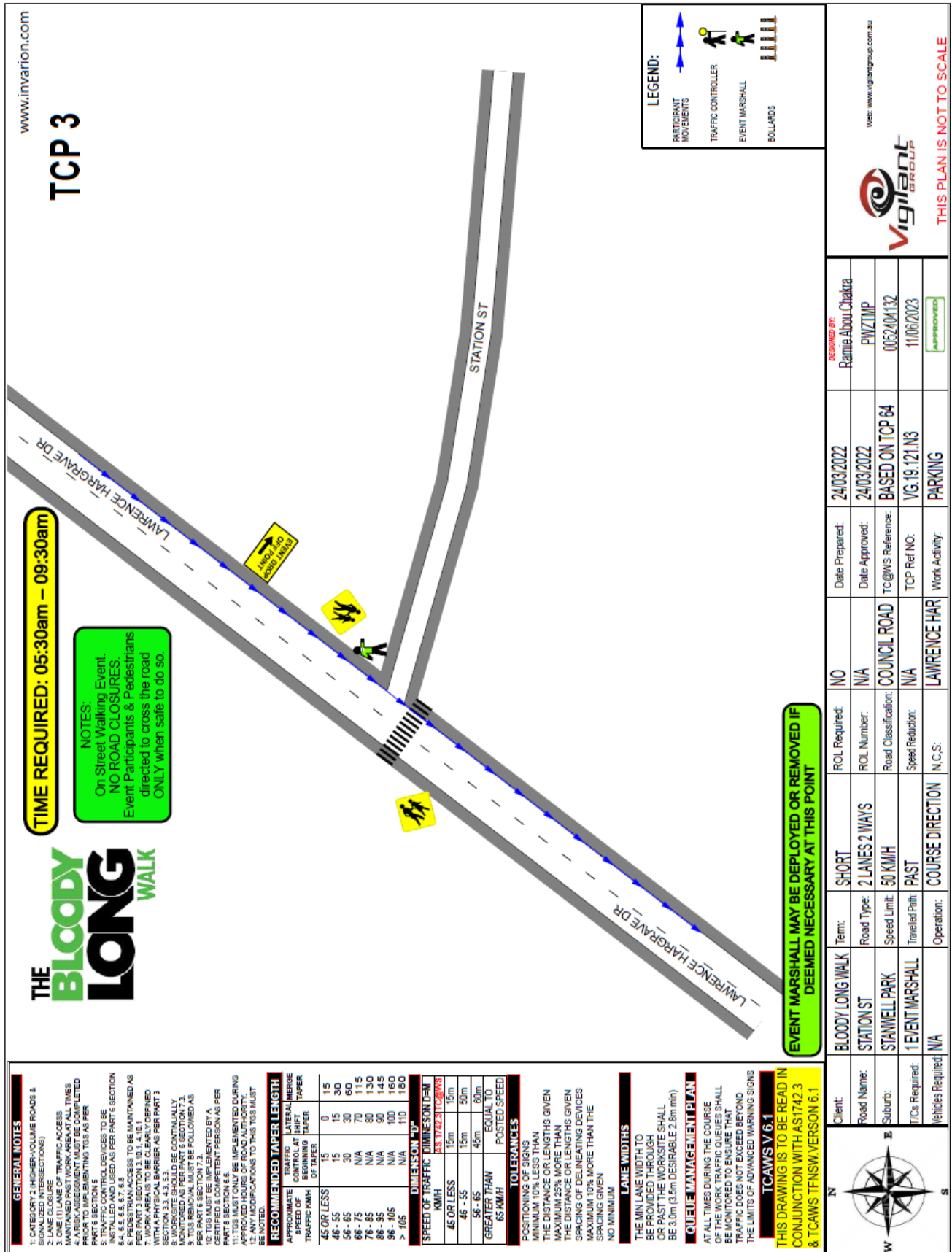
It is condition of approval that the applicant consult with residents and businesses who may be affected by the road closure.

PROPOSAL

The road closure be approved subject to [Council's Standard Conditions for Road Closures](#) and the submitted Traffic Control Plans.







[illegible]

TCP 6

TIME REQUIRED: 0700am – 12:00pm

GENERAL NOTES

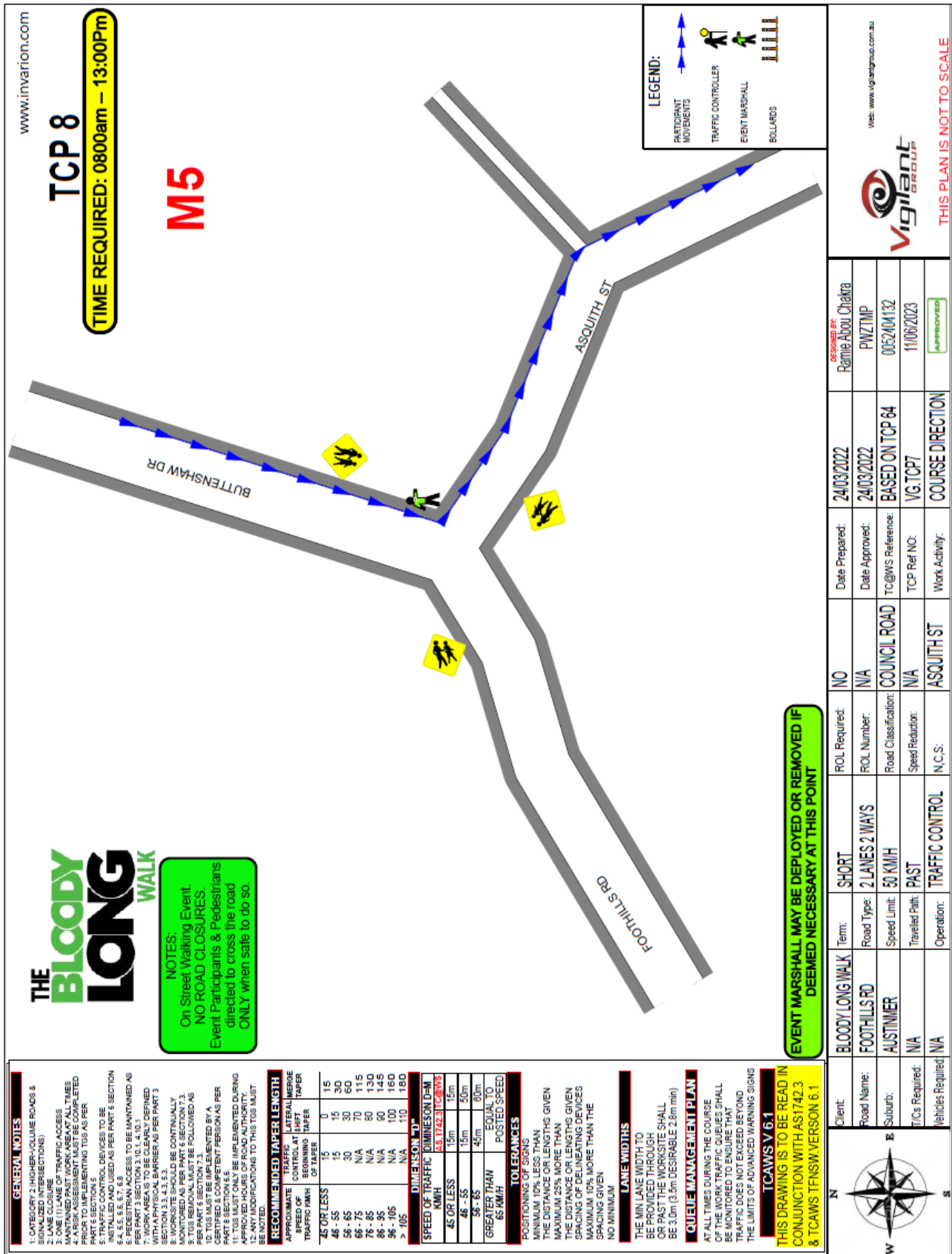
- CATEGORY 2 WORK ON VOLUME ROADS & SIGNALISED INTERSECTIONS
- LANE CLOSURE
- ONE (1) LANE OF TRAFFIC ACCESS
- TRAFFIC MANAGEMENT PLAN (TMP) MUST BE COMPLETED PRIOR TO IMPLEMENTING TOS AS PER PART 6 SECTION 6.1
- WORK AREA TO BE CLEARLY DEFINED WITH A PHYSICAL BARRIER AS PER PART 3 SECTION 3.3.3.3
- WORK AREA TO BE CONTINUALLY MONITORED AS PER PART 7 SECTION 7.3
- TOS REMOVAL MUST BE FOLLOWED AS PER PART 8 SECTION 8.1
- TOS MUST BE IMPLEMENTED BY A CERTIFIED & COMPETENT PERSON AS PER PART 8 SECTION 8.6
- TOS MUST BE IMPLEMENTED DURING APPROVED HOURS OF ROAD AUTHORITY
- ANY MODIFICATIONS TO THIS TOS MUST BE NOTED

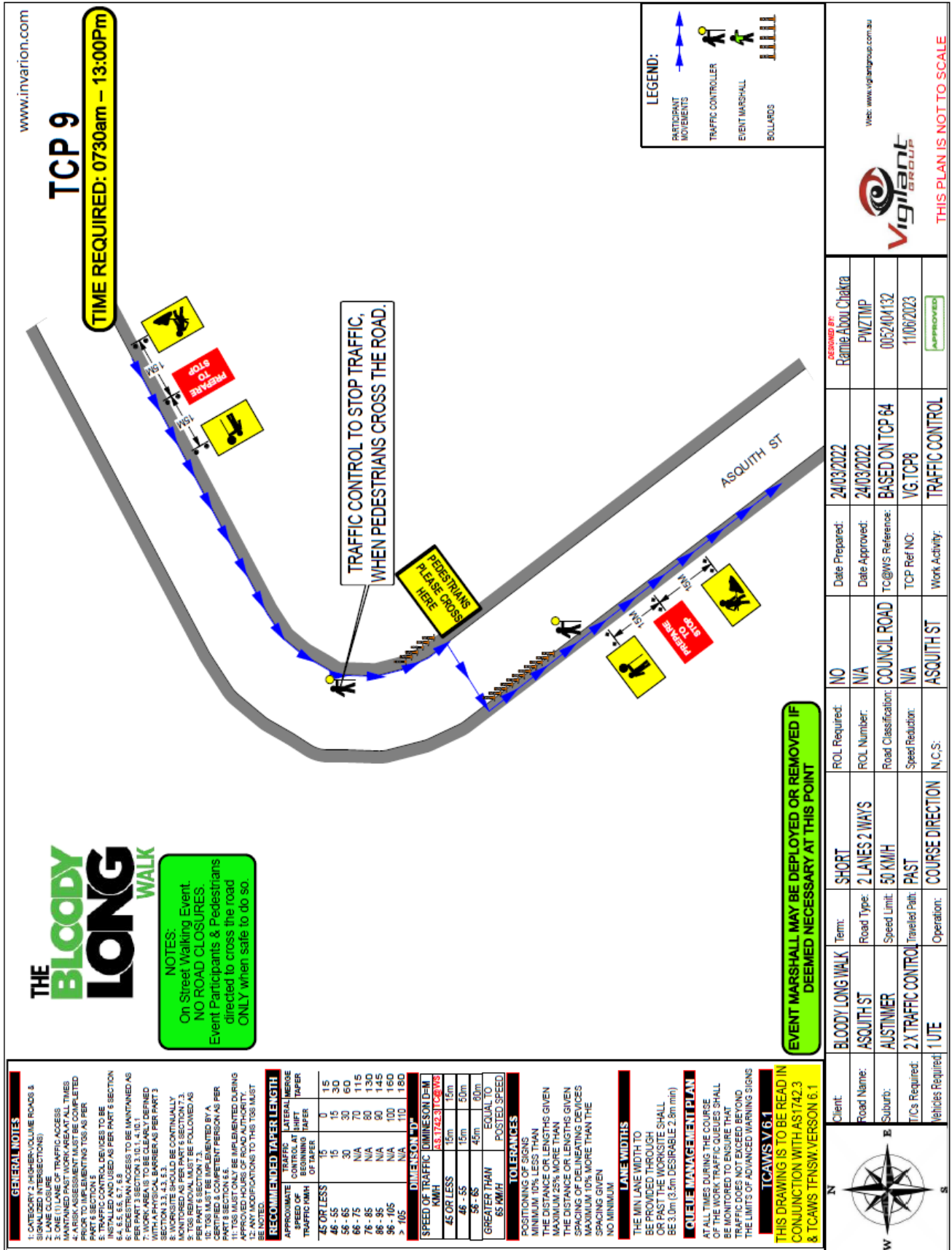
RECOMMENDED TAPER LENGTH

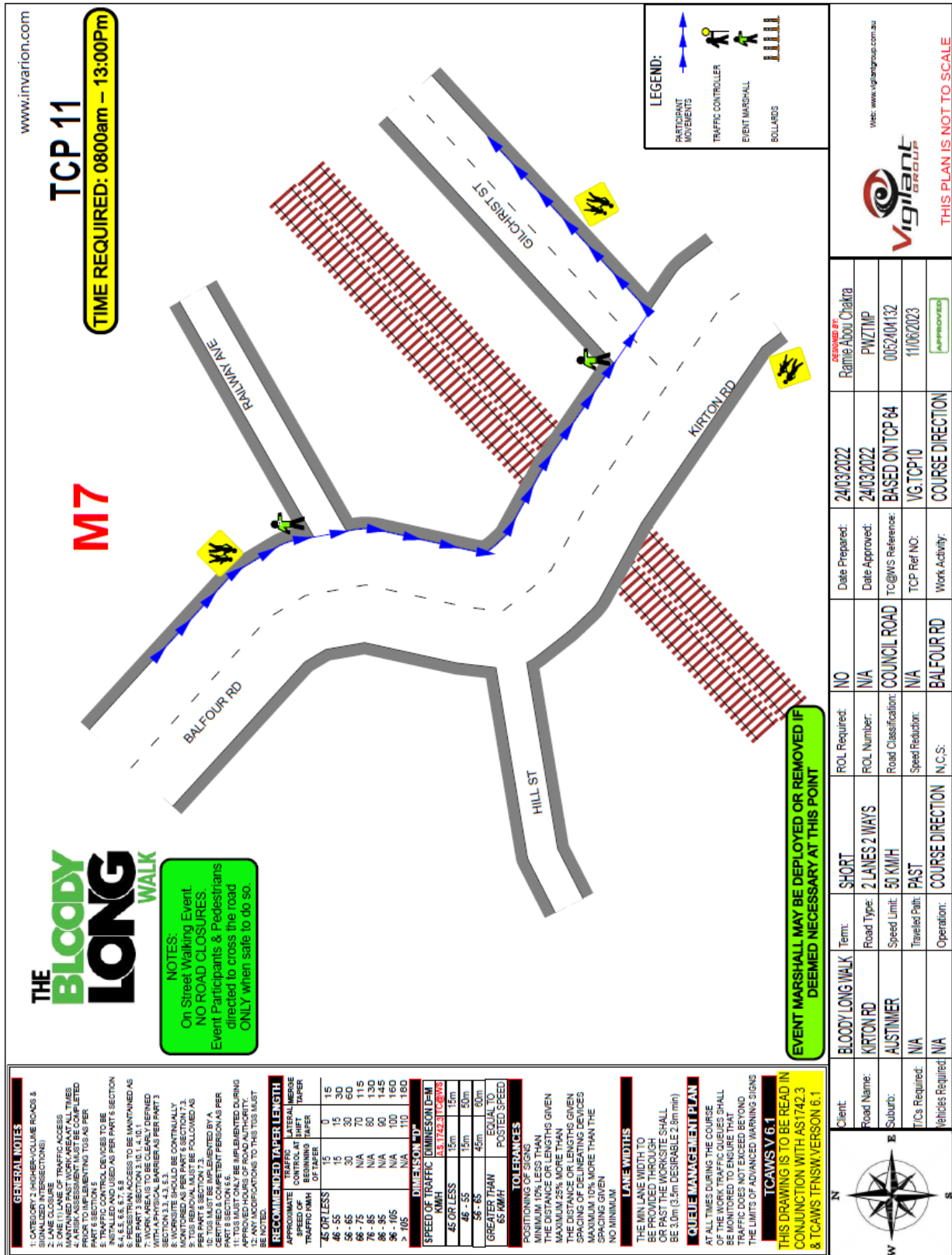
APPROXIMATE SPEED OF TRAFFIC KMH	TRAFFIC CONTROL AT SHIFT BEGINNING TAPER	LATERAL MERGE TAPER
45 OR LESS	15	0
46 - 55	15	15
56 - 65	30	30
66 - 75	N/A	60
76 - 85	N/A	70
86 - 95	N/A	80
96 - 105	N/A	90
106 - 115	N/A	100
116 - 125	N/A	110
126 - 135	N/A	120
136 - 145	N/A	130
146 - 155	N/A	140
156 - 165	N/A	150
166 - 175	N/A	160
176 - 185	N/A	170
186 - 195	N/A	180
196 - 205	N/A	190
206 - 215	N/A	200
216 - 225	N/A	210
226 - 235	N/A	220
236 - 245	N/A	230
246 - 255	N/A	240
256 - 265	N/A	250
266 - 275	N/A	260
276 - 285	N/A	270
286 - 295	N/A	280
296 - 305	N/A	290
306 - 315	N/A	300
316 - 325	N/A	310
326 - 335	N/A	320
336 - 345	N/A	330
346 - 355	N/A	340
356 - 365	N/A	350
366 - 375	N/A	360
376 - 385	N/A	370
386 - 395	N/A	380
396 - 405	N/A	390
406 - 415	N/A	400
416 - 425	N/A	410
426 - 435	N/A	420
436 - 445	N/A	430
446 - 455	N/A	440
456 - 465	N/A	450
466 - 475	N/A	460
476 - 485	N/A	470
486 - 495	N/A	480
496 - 505	N/A	490
506 - 515	N/A	500
516 - 525	N/A	510
526 - 535	N/A	520
536 - 545	N/A	530
546 - 555	N/A	540
556 - 565	N/A	550
566 - 575	N/A	560
576 - 585	N/A	570
586 - 595	N/A	580
596 - 605	N/A	590
606 - 615	N/A	600
616 - 625	N/A	610
626 - 635	N/A	620
636 - 645	N/A	630
646 - 655	N/A	640
656 - 665	N/A	650
666 - 675	N/A	660
676 - 685	N/A	670
686 - 695	N/A	680
696 - 705	N/A	690
706 - 715	N/A	700
716 - 725	N/A	710
726 - 735	N/A	720
736 - 745	N/A	730
746 - 755	N/A	740
756 - 765	N/A	750
766 - 775	N/A	760
776 - 785	N/A	770
786 - 795	N/A	780
796 - 805	N/A	790
806 - 815	N/A	800
816 - 825	N/A	810
826 - 835	N/A	820
836 - 845	N/A	830
846 - 855	N/A	840
856 - 865	N/A	850
866 - 875	N/A	860
876 - 885	N/A	870
886 - 895	N/A	880
896 - 905	N/A	890
906 - 915	N/A	900
916 - 925	N/A	910
926 - 935	N/A	920
936 - 945	N/A	930
946 - 955	N/A	940
956 - 965	N/A	950
966 - 975	N/A	960
976 - 985	N/A	970
986 - 995	N/A	980
996 - 1005	N/A	990
1006 - 1015	N/A	1000
1016 - 1025	N/A	1010
1026 - 1035	N/A	1020
1036 - 1045	N/A	1030
1046 - 1055	N/A	1040
1056 - 1065	N/A	1050
1066 - 1075	N/A	1060
1076 - 1085	N/A	1070
1086 - 1095	N/A	1080
1096 - 1105	N/A	1090
1106 - 1115	N/A	1100
1116 - 1125	N/A	1110
1126 - 1135	N/A	1120
1136 - 1145	N/A	1130
1146 - 1155	N/A	1140
1156 - 1165	N/A	1150
1166 - 1175	N/A	1160
1176 - 1185	N/A	1170
1186 - 1195	N/A	1180
1196 - 1205	N/A	1190
1206 - 1215	N/A	1200
1216 - 1225	N/A	1210
1226 - 1235	N/A	1220
1236 - 1245	N/A	1230
1246 - 1255	N/A	1240
1256 - 1265	N/A	1250
1266 - 1275	N/A	1260
1276 - 1285	N/A	1270
1286 - 1295	N/A	1280
1296 - 1305	N/A	1290
1306 - 1315	N/A	1300
1316 - 1325	N/A	1310
1326 - 1335	N/A	1320
1336 - 1345	N/A	1330
1346 - 1355	N/A	1340
1356 - 1365	N/A	1350
1366 - 1375	N/A	1360
1376 - 1385	N/A	1370
1386 - 1395	N/A	1380
1396 - 1405	N/A	1390
1406 - 1415	N/A	1400
1416 - 1425	N/A	1410
1426 - 1435	N/A	1420
1436 - 1445	N/A	1430
1446 - 1455	N/A	1440
1456 - 1465	N/A	1450
1466 - 1475	N/A	1460
1476 - 1485	N/A	1470
1486 - 1495	N/A	1480
1496 - 1505	N/A	1490
1506 - 1515	N/A	1500
1516 - 1525	N/A	1510
1526 - 1535	N/A	1520
1536 - 1545	N/A	1530
1546 - 1555	N/A	1540
1556 - 1565	N/A	1550
1566 - 1575	N/A	1560
1576 - 1585	N/A	1570
1586 - 1595	N/A	1580
1596 - 1605	N/A	1590
1606 - 1615	N/A	1600
1616 - 1625	N/A	1610
1626 - 1635	N/A	1620
1636 - 1645	N/A	1630
1646 - 1655	N/A	1640
1656 - 1665	N/A	1650
1666 - 1675	N/A	1660
1676 - 1685	N/A	1670
1686 - 1695	N/A	1680
1696 - 1705	N/A	1690
1706 - 1715	N/A	1700
1716 - 1725	N/A	1710
1726 - 1735	N/A	1720
1736 - 1745	N/A	1730
1746 - 1755	N/A	1740
1756 - 1765	N/A	1750
1766 - 1775	N/A	1760
1776 - 1785	N/A	1770
1786 - 1795	N/A	1780
1796 - 1805	N/A	1790
1806 - 1815	N/A	1800
1816 - 1825	N/A	1810
1826 - 1835	N/A	1820
1836 - 1845	N/A	1830
1846 - 1855	N/A	1840
1856 - 1865	N/A	1850
1866 - 1875	N/A	1860
1876 - 1885	N/A	1870
1886 - 1895	N/A	1880
1896 - 1905	N/A	1890
1906 - 1915	N/A	1900
1916 - 1925	N/A	1910
1926 - 1935	N/A	1920
1936 - 1945	N/A	1930
1946 - 1955	N/A	1940
1956 - 1965	N/A	1950
1966 - 1975	N/A	1960
1976 - 1985	N/A	1970
1986 - 1995	N/A	1980
1996 - 2005	N/A	1990
2006 - 2015	N/A	2000
2016 - 2025	N/A	2010
2026 - 2035	N/A	2020
2036 - 2045	N/A	2030
2046 - 2055	N/A	2040
2056 - 2065	N/A	2050
2066 - 2075	N/A	2060
2076 - 2085	N/A	2070
2086 - 2095	N/A	2080
2096 - 2105	N/A	2090
2106 - 2115	N/A	2100
2116 - 2125	N/A	2110
2126 - 2135	N/A	2120
2136 - 2145	N/A	2130
2146 - 2155	N/A	2140
2156 - 2165	N/A	2150
2166 - 2175	N/A	2160
2176 - 2185	N/A	2170
2186 - 2195	N/A	2180
2196 - 2205	N/A	2190
2206 - 2215	N/A	2200
2216 - 2225	N/A	2210
2226 - 2235	N/A	2220
2236 - 2245	N/A	2230
2246 - 2255	N/A	2240
2256 - 2265	N/A	2250
2266 - 2275	N/A	2260
2276 - 2285	N/A	2270
2286 - 2295	N/A	2280
2296 - 2305	N/A	2290
2306 - 2315	N/A	2300
2316 - 2325	N/A	2310
2326 - 2335	N/A	2320
2336 - 2345	N/A	2330
2346 - 2355	N/A	2340
2356 - 2365	N/A	2350
2366 - 2375	N/A	2360
2376 - 2385	N/A	2370
2386 - 2395	N/A	2380
2396 - 2405	N/A	2390
2406 - 2415	N/A	2400
2416 - 2425	N/A	2410
2426 - 2435	N/A	2420
2436 - 2445	N/A	2430
2446 - 2455	N/A	2440
2456 - 2465	N/A	2450
2466 - 2475	N/A	2460
2476 - 2485	N/A	2470
2486 - 2495	N/A	2480
2496 - 2505	N/A	2490
2506 - 2515	N/A	2500
2516 - 2525	N/A	2510
2526 - 2535	N/A	2520
2536 - 2545	N/A	2530
2546 - 2555	N/A	2540
2556 - 2565	N/A	2550
2566 - 2575	N/A	2560
2576 - 2585	N/A	2570
2586 - 2595	N/A	2580
2596 - 2605	N/A	2590
2606 - 2615	N/A	2600
2616 - 2625	N/A	2610
2626 - 2635	N/A	2620
2636 - 2645	N/A	2630
2646 - 2655	N/A	2640
2656 - 2665	N/A	2650
2666 - 2675	N/A	2660
2676 - 2685	N/A	2670
2686 - 2695	N/A	2680
2696 - 2705	N/A	2690
2706 - 2715	N/A	2700
2716 - 2725	N/A	2710
2726 - 2735	N/A	2720
2736 - 2745	N/A	2730
2746 - 2755	N/A	2740
2756 - 2765	N/A	2750
2766 - 2775	N/A	2760
2776 - 2785	N/A	2770
2786 - 2795	N/A	2780
2796 - 2805	N/A	2790
2806 - 2815	N/A	2800
2816 - 2825	N/A	2810
2826 - 2835	N/A	2820
2836 - 2845	N/A	2830
2846 - 2855	N/A	2840
2856 - 2865	N/A	2850
2866 - 2875	N/A	2860
2876 - 2885	N/A	2870
2886 - 2895	N/A	2880
2896 - 2905	N/A	2890
2906 - 2915	N/A	2900
2916 - 2925	N/A	2910
2926 - 2935	N/A	2920
2936 - 2945	N/A	2930
2946 - 2955	N/A	2940
2956 - 2965	N/A	2950
2966 - 2975	N/A	2960
2976 - 2985	N/A	2970
2986 - 2995	N/A	2980
2996 - 3005	N/A	2990
3006 - 3015	N/A	3000
3016 - 3025	N/A	3010
3026 - 3035	N/A	3020
3036 - 3045	N/A	3030
3046 - 3055	N/A	3040
3056 - 3065		

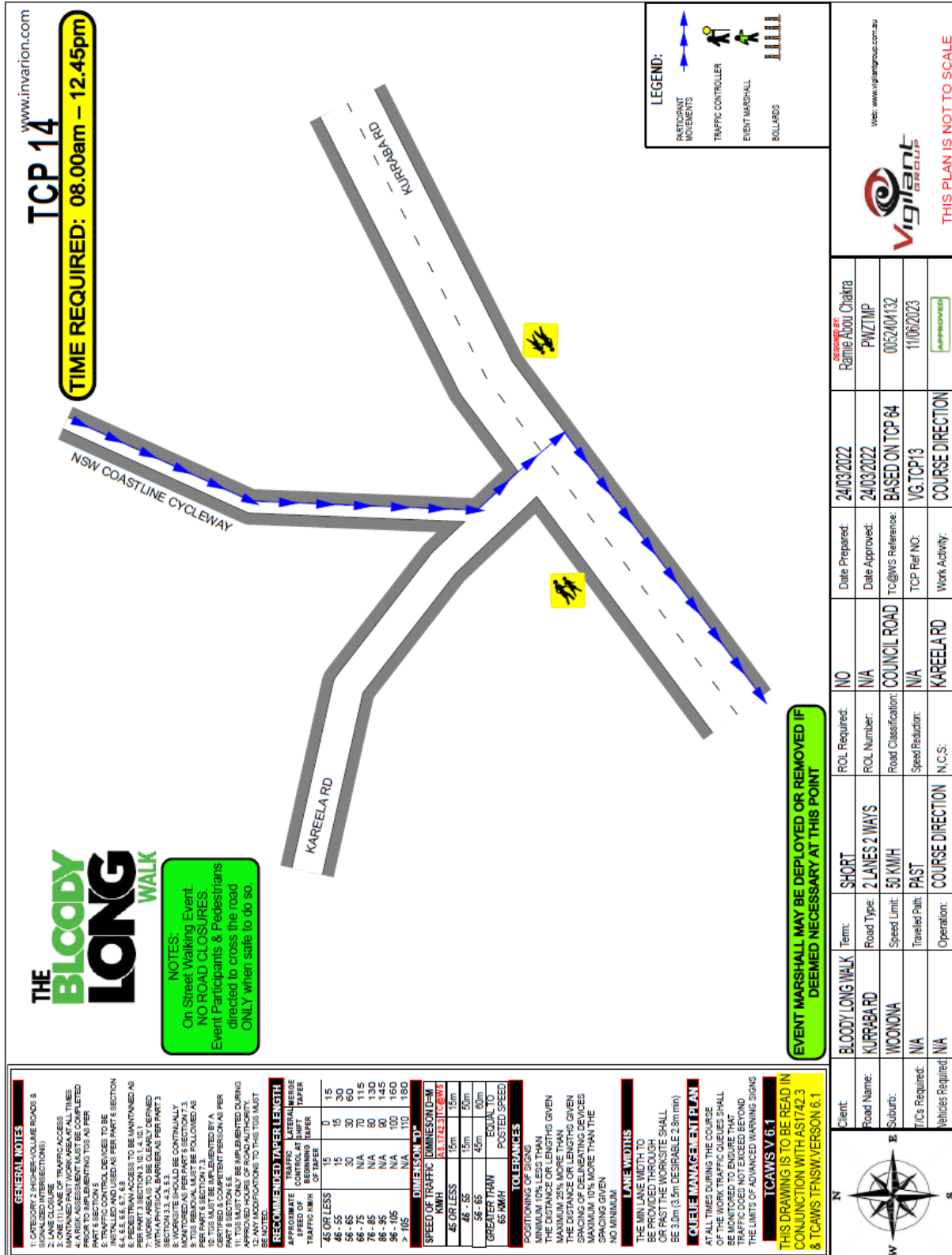
Item 3.1 – WOLLONGONG, Stanwell Park Beach Reserve to MacCabe Park – Bloody Long Walk 2022 – Page 7 of 18

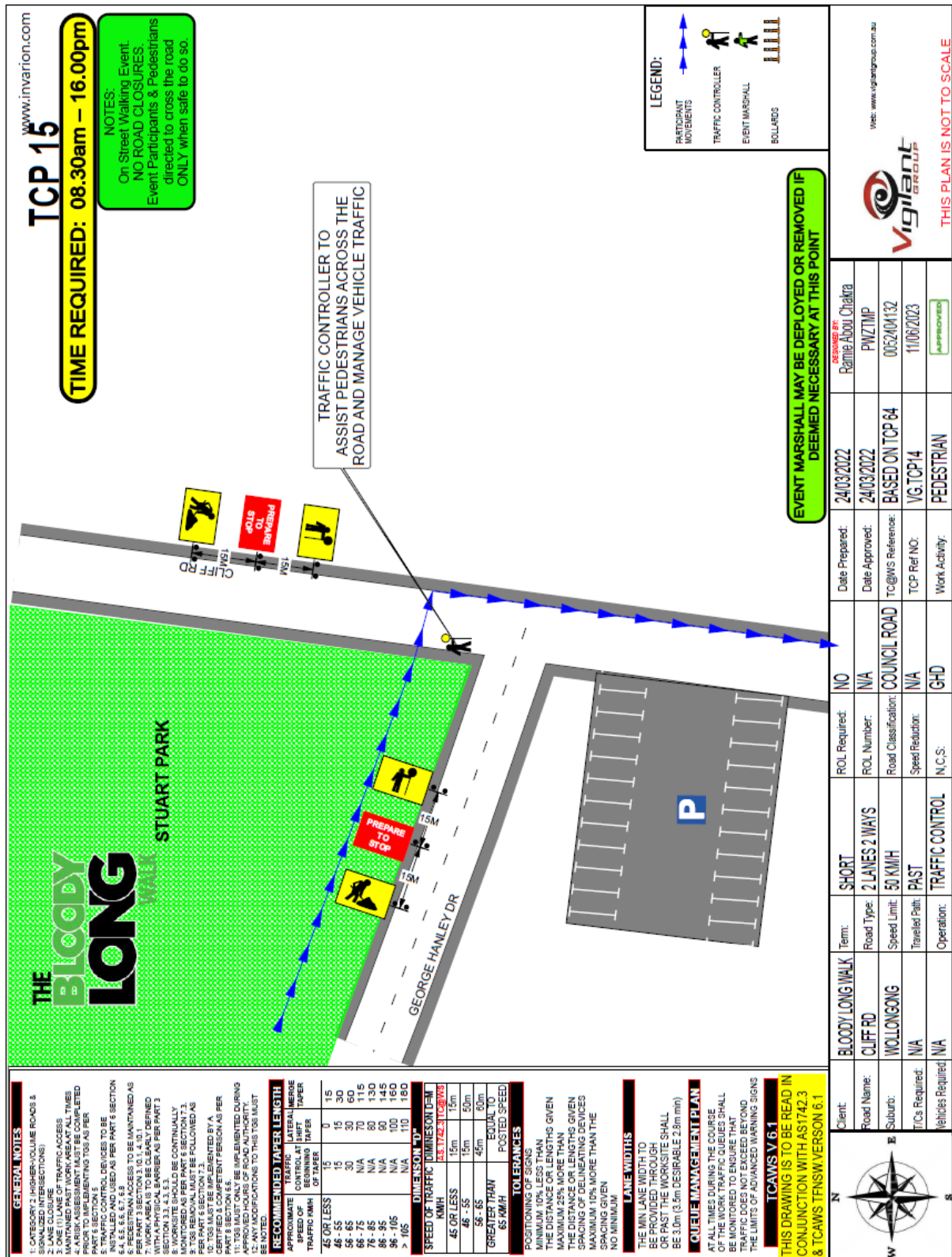




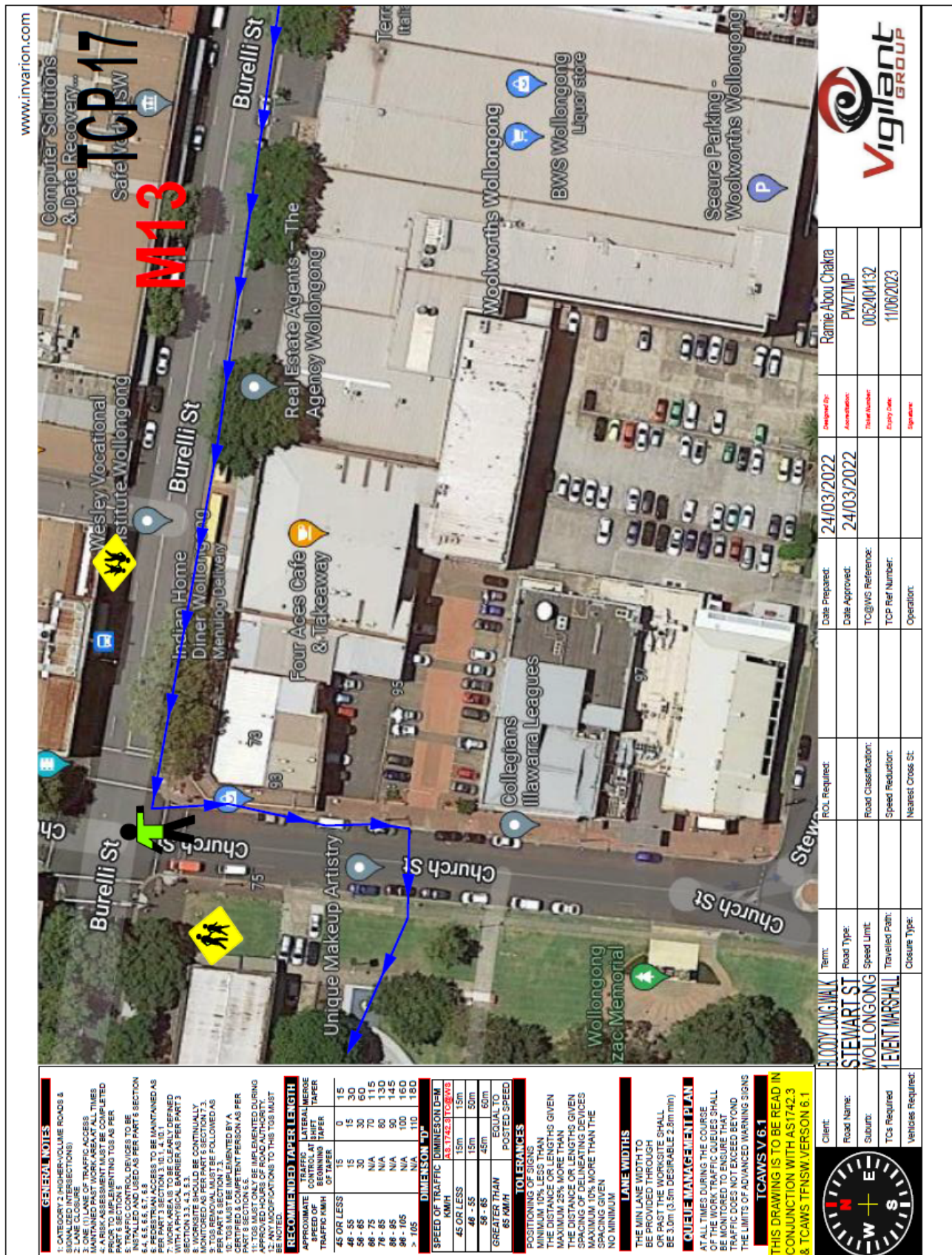




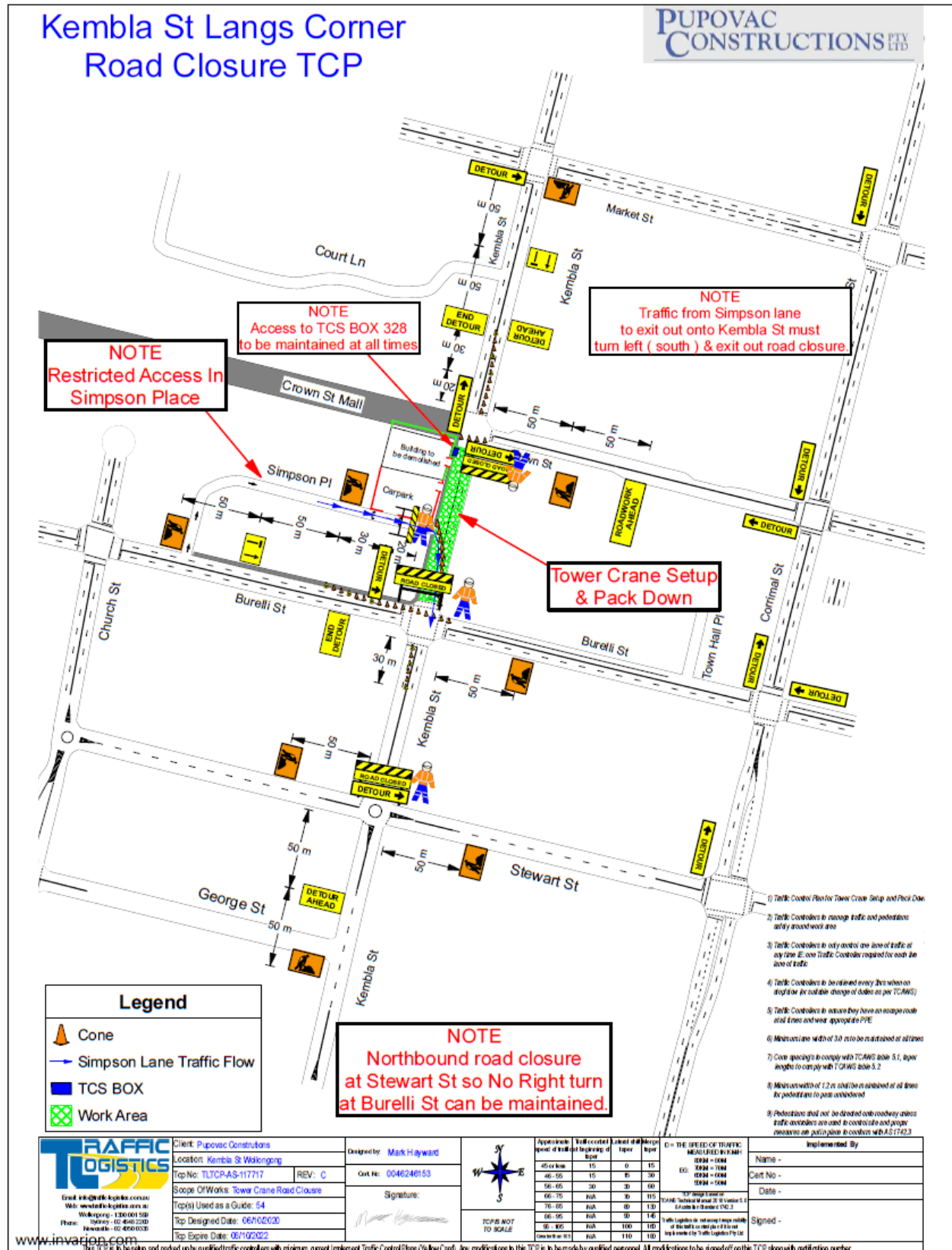








Item 3.2 - WOLLONGONG, Kembla Street – Tower Crane removal



4 DESIGN MATTERS

4.1 BULLI, Blackall Street – Ward 1 – New pedestrian refuge

BACKGROUND

As part of the community consultation of the previously approved cycleway connection from the Bulli showground to the coastal shared path, requests were received for a crossing near the intersection of Beach Street and Blackall Street, Bulli.

After consultation with ISP, a pedestrian refuge was deemed to be the most suitable type of crossing at this point. The crossing's main purpose is to give cyclists who are using the new cycleway along Beach Street a safer way to cross Blackall Street to join the coastal cycleway.

This crossing will also be used by pedestrians who wish to cross Blackall Street, for example to access the beach and/or the coastal cycleway. There could lead to a potential for a future footpath connection to use this crossing.

We are proposing:

- A short section of shared path along Beach Street for cyclists to enter and exit the road away from the intersection with Blackall Street and connect them to the crossing
- Install blisters on the western side of Blackall Street
- Install a pedestrian refuge in the middle of the road
- Extend the kerb and gutter, with a new kerb ramp on the eastern side
- Extend the BB line south of the refuge in line with TDT2011/01a and extend the BB line north 10-15m more than required to join up with the existing BB line to avoid leaving a small section of BS line
- Add line marking and a give way sign to the Beach Street intersection.
- Install No Stopping signs on Blackall Street in line with TDT2011/01a
- Install No Stopping on Beach Street to prevent the kerb ramp being parked across.

This will result in some loss of parking but will greatly benefit pedestrian and cyclist safety.

CONSULTATION

This project is a result of the community consultation of the Bulli Showground – Coastal Cycleway connection. After Traffic Committee approval, every resident that was notified of the previous project will be notified of this new crossing.

PROPOSAL

Drawing 6996-SK15-1 be approved.

4.2 WOONONA, George Tate Close – Ward 1 – New shared pathway

BACKGROUND

Approximately 500m of existing shared path in Pioneer Beach Estate Park is being reconstructed along George Tate Close. The alignment is to better suit user safety and increase asset lifespan. The proposed path is to include signage and line marking to denote it as a shared use pathway:

- The proposed path is within the reserve at George Tate Close, Pioneer Beach Estate, Woonona.
- The proposed path is approximately 500m of 2.5m wide shared pathway reconstruction on revised alignment
- The current pathway is in poor condition with severe damage caused by tree root conflict. Change of alignment in response to CPTED and arborists recommendations.
- Relevant standards include RTA (RMS) NSW bicycle guidelines, Austroads Part6A: Pedestrian and Cyclist paths and RTA (RMS) Delineation Section 12 – Pavement markings for bicycle facilities.

CONSULTATION

Community consultation with adjacent neighbours is currently underway via letter and plan sent to residents and property owners.

PROPOSAL

Drawing 7182_SK01_2 be approved.

4.3 WOLLONGONG, Allan Street – Ward 2 – Blisters/Kerb Extensions

BACKGROUND

A new footpath is proposed along the western side of Allan Street with new kerb ramps and blister to be constructed at the northern end.

This project is to provide a safe and adequate footpath connection for pedestrians walking along Allan Street between Staff Street and Rawlinson Avenue. The nature strips show signs of wear and with its proximity to the hospital it gives evidence that the street sees a moderate amount of foot traffic. Thus, a footpath would provide a safe route along the street, keeping pedestrians off the road. The intersection has been designed to suit a 12.5 m bus. The No Stopping on the western side has been extended to provide adequate sight distance for pedestrians crossing the road. A Stop Sign and line has also been added to the top of Allan Street.

CONSULTATION

All residents that are within range of the works will be sent a letter with details of the works to occur and given adequate time to voice concerns and allow for any valid changes to be made, after approval from Traffic Committee has been received.

PROPOSAL

Drawing 7199-SK03-1 be approved.

4.4 GWYNNEVILLE, Foley Street – Ward 2 – Proposed blisters, signage and line marking

BACKGROUND

This item was previously discussed at the Traffic Committee meeting of 11 May 2021 and was endorsed. Community consultation has already taken place and following this, the No Right Turn at the intersection of Foley and Gipps Street has subsequently been removed from the design. Transport for NSW have requested traffic count data be provided to help further support the changes. TfNSW have been consulted as part of this process and have supported the amendment to the design.

Foley Street has had some recorded traffic accidents, some having involved pedestrians. With motorists exiting the Northern Distributor onto Porter Street/Foley Street, it is a highly utilised road for citizens gaining access to the western end of Wollongong to facilities such as the public and private hospitals and Beaton Park Sports Centre. The free bus route also has stops on Foley Street which are some of the most utilised bus stops within the LGA. Road safety upgrades are proposed between Porter Street and Gipps Street to improve pedestrian and driver safety. The project is being funded under the NSW Government Safer Roads Program.

The proposed design consists of:

- Pedestrian refuges
- Pedestrian blisters
- Kerb extensions
- Street lighting
- Signage
- Line marking
- Kerb ramps
- Footpath upgrades

CONSULTATION

Consultation is a requirement of the design process.

PROPOSAL

Plans PJ-4023 – 5001_C01 & PJ-4023 – 5001_C02 be approved.

4.5 KANAHOOKA, Kanahooka Road – Ward 3 – Repair to damaged sections of shared pathway

BACKGROUND

Repair of approximately 550m² of 2.5m wide concrete shared pathway at Kanahooka Road between Lakeside Drive and Murra Murra Avenue, Kanahooka. The proposed works include signage and line marking to denote continuation of current shared use pathway:

- The path is located on the northside of Kanahooka Road between Lakeside Drive and Murra Murra Avenue, Kanahooka.
- Damaged path panels are to be replaced at current levels and alignment.
- The current pathway is in poor condition with damage caused by unknown means.
- Relevant standards include RTA (RMS) NSW bicycle guidelines, Austroads Part 6A: Pedestrian and Cyclist paths and RTA (RMS) Delineation Section 12 – Pavement markings for bicycle facilities

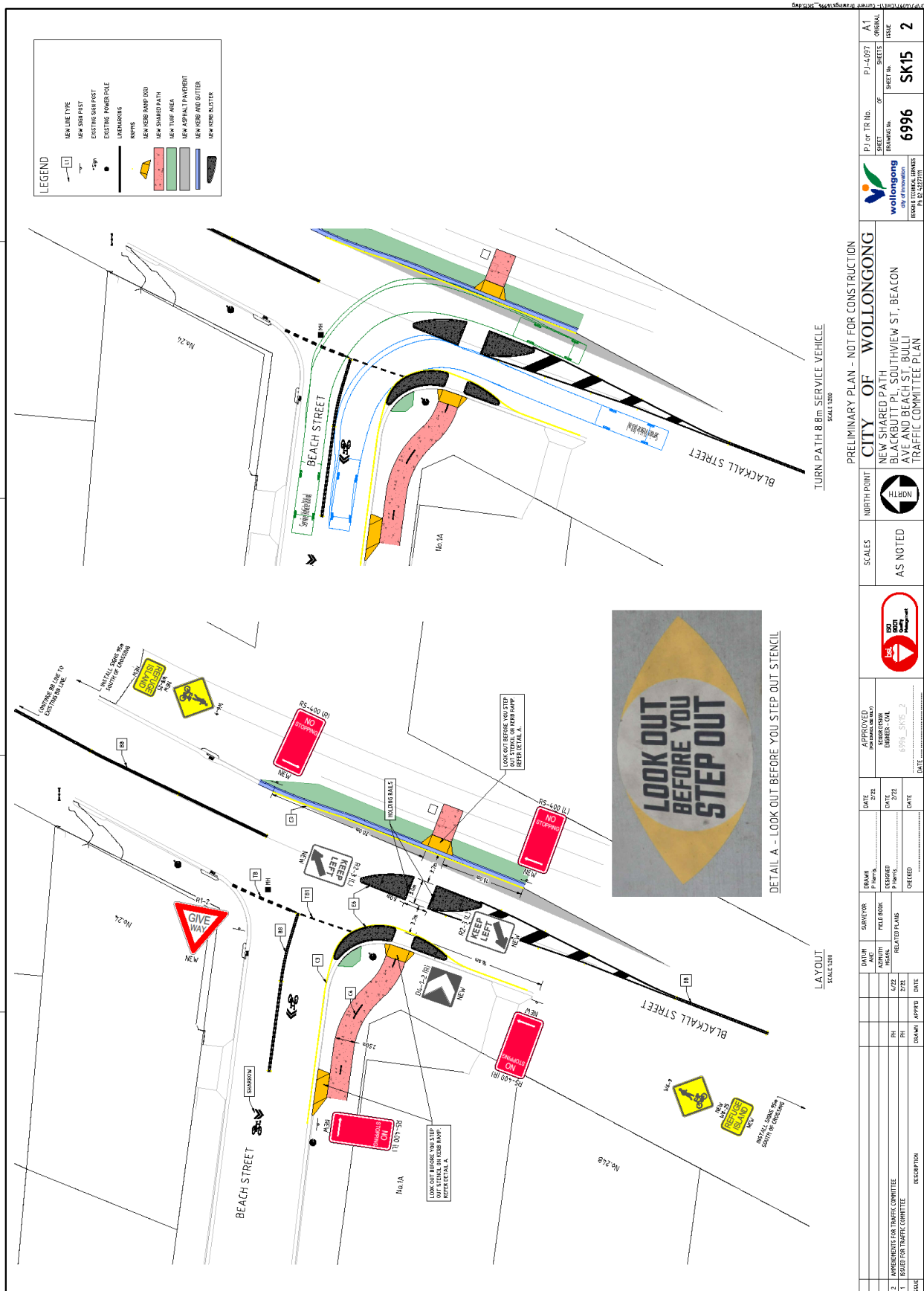
CONSULTATION

Community consultation is not required for maintenance projects.

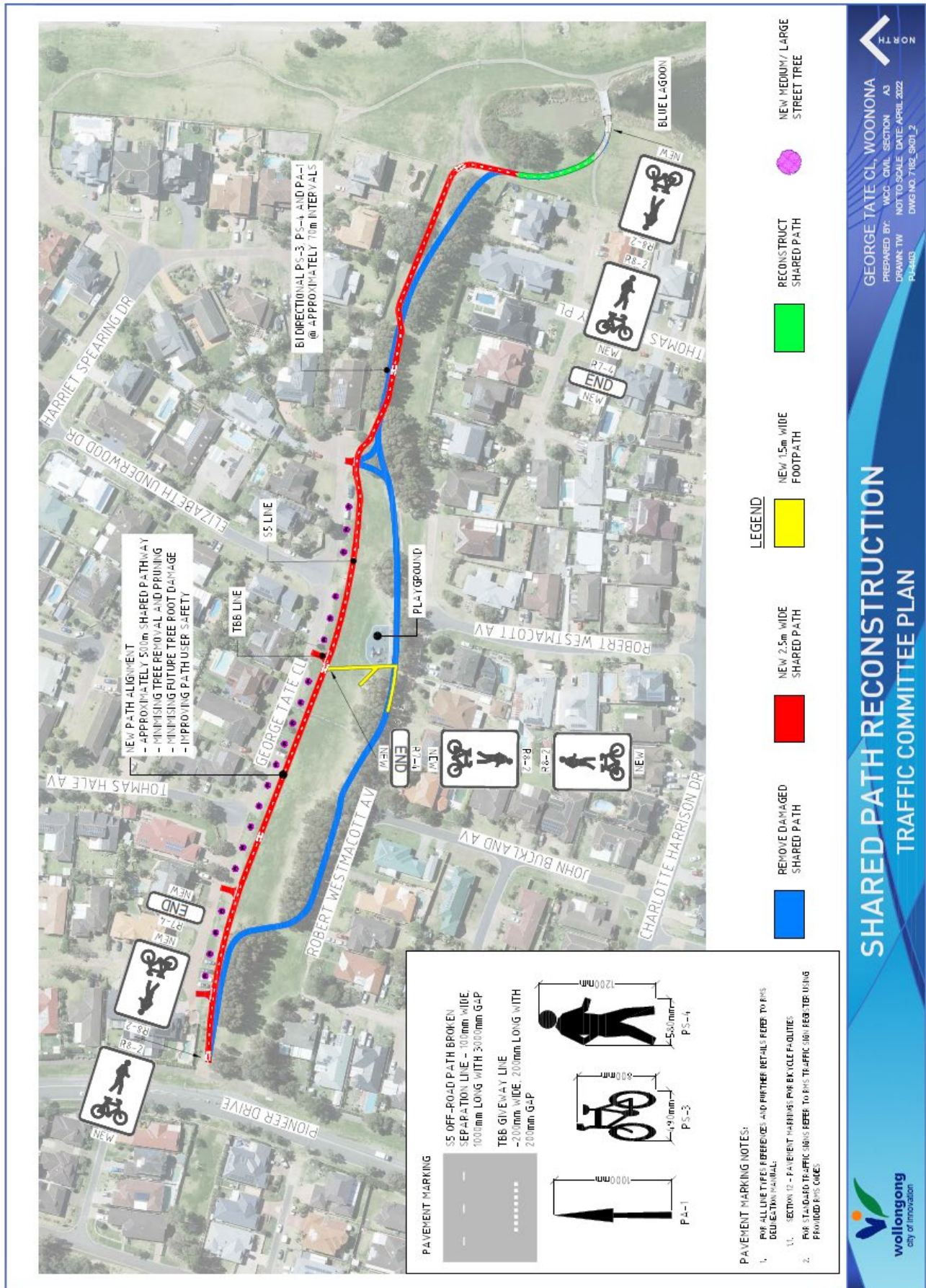
PROPOSAL

Drawing 7180_C03_1 be approved.

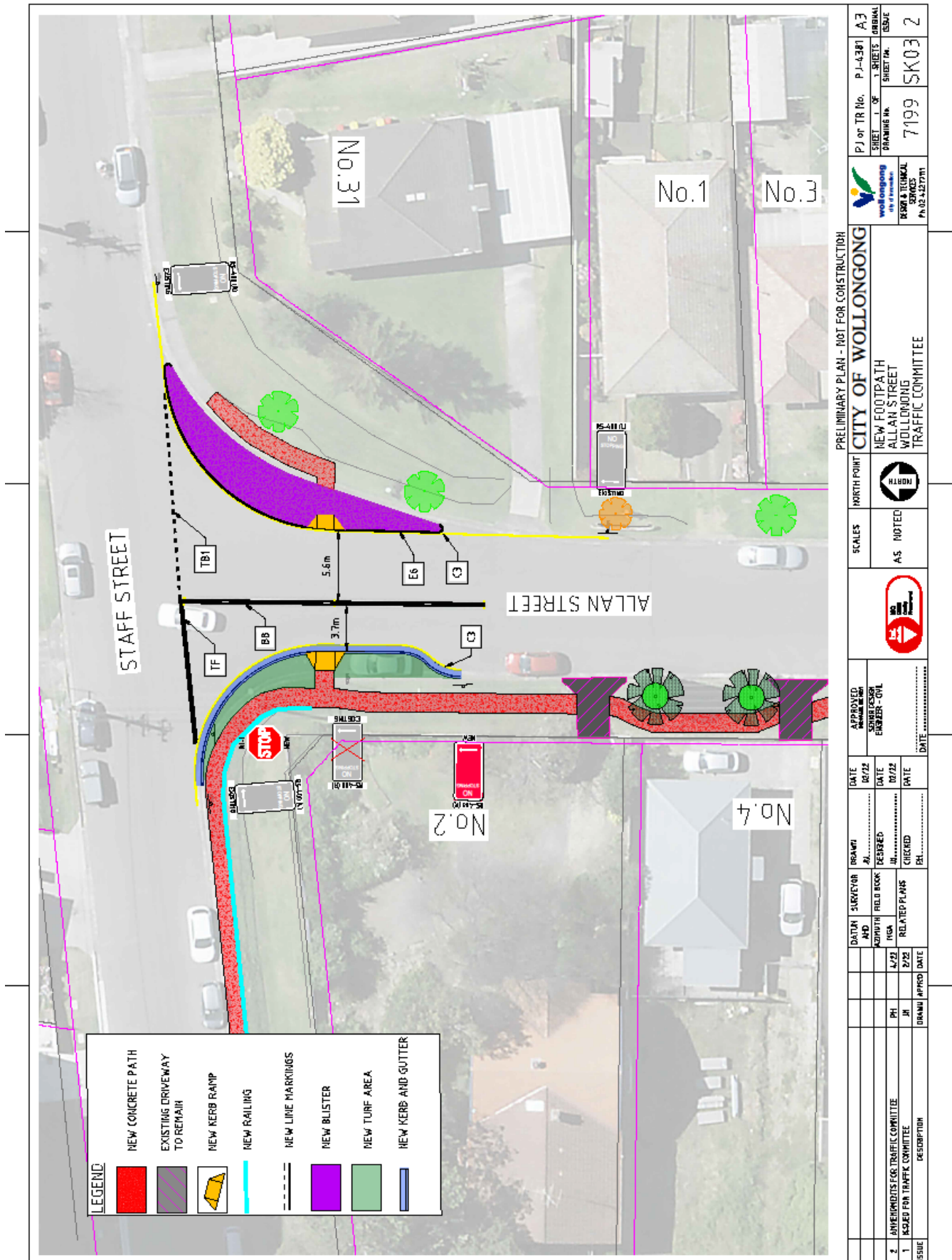
Item 4.1 – BULLI, Blackall Street – New pedestrian refuge

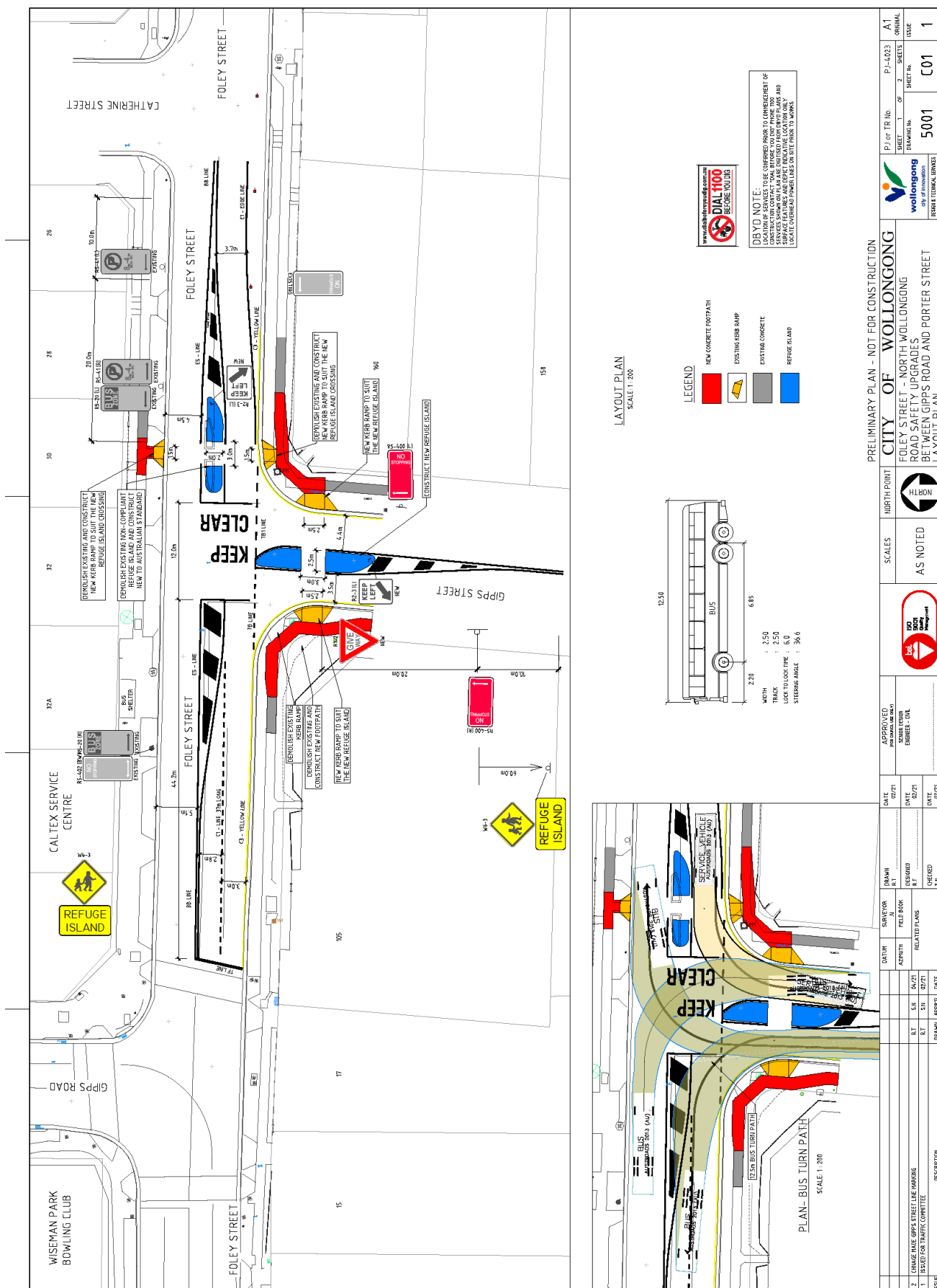


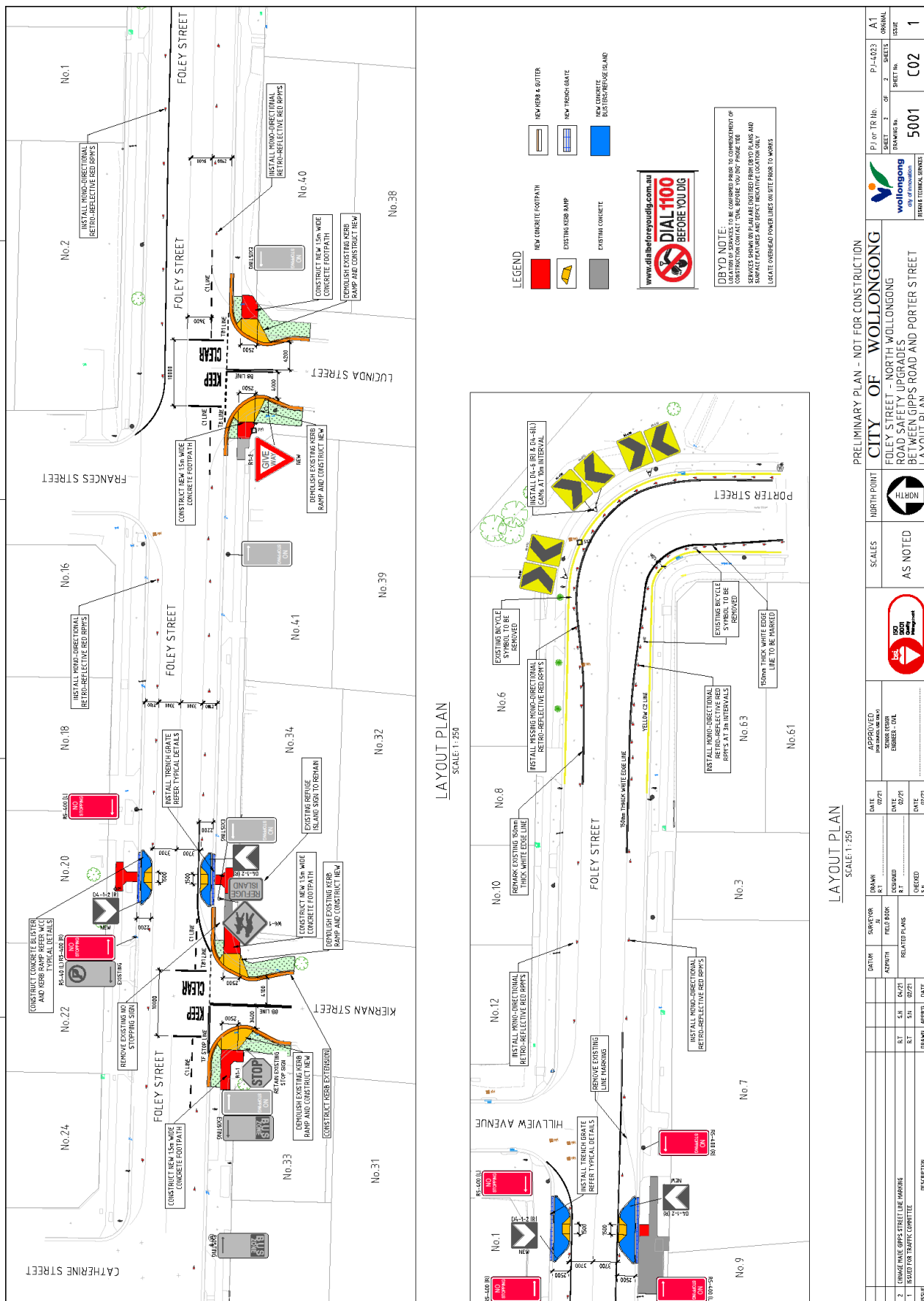
Item 4.2 – WOONONA, George Tate Close – Shared pathway reconstruction

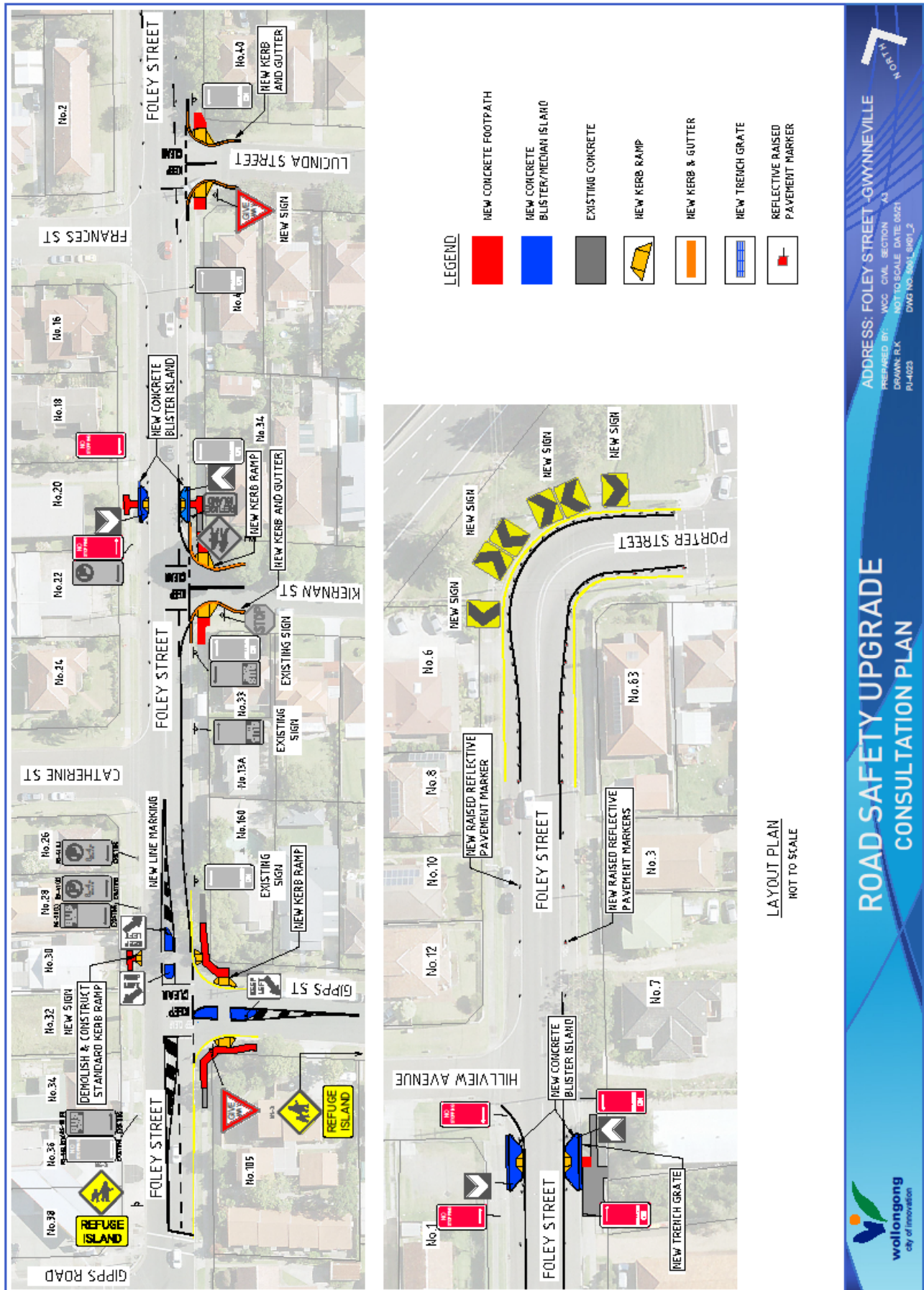


Item 4.3 – WOLLONGONG, Allan Street – Footpath









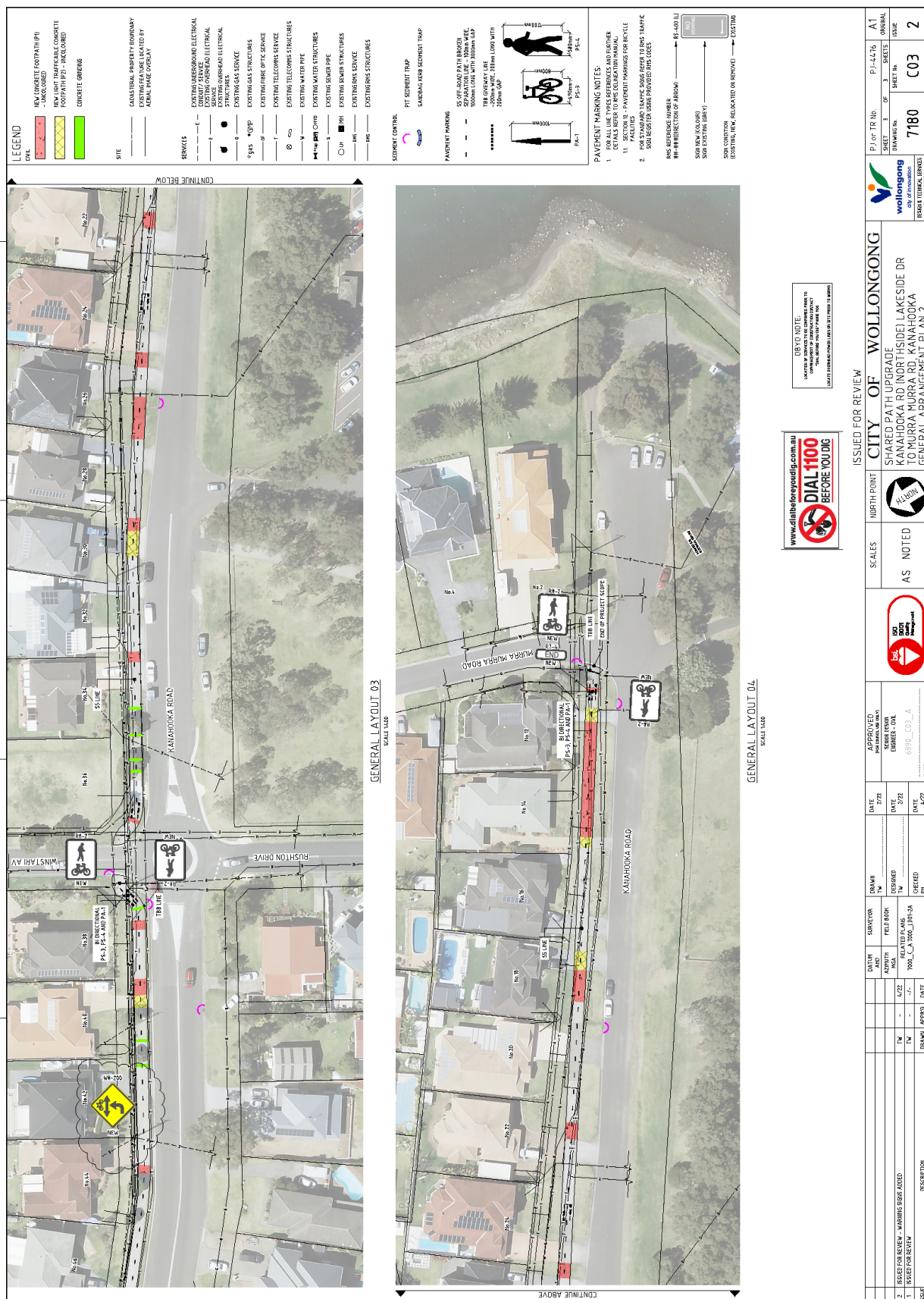
DRAWING SCHEDULE

SHEET No.	DESCRIPTION
7161_C00_1	COVER, LOCATION AND DRAWING SCHEDULE
7161_C01_1	NOTES AND DETAILS
7161_C02_1	GENERAL ARRANGEMENT PLAN 1
7161_C03_1	GENERAL ARRANGEMENT PLAN 2



LOCALITY PLAN
SCALE: 1/500

[illegible]



5 DOB IN A HOON (SPEED COMPLAINTS)

STREET	SUBURB	CONCERN
Dolan Street – laneway between Dolan Street and Coolabah Road	DAPTO	People have been driving through the pedestrian laneway
Beach Street	WOLLONGONG	Speeding vehicles and request for additional speed mitigation devices
Cordeaux Road – from Harry Graham Drive to Mount Kembla lookout	MOUNT KEMBLA	Speeding vehicles, request for speed limit review and speed mitigation devices
Blackman Parade	UNANDERRA	Speeding vehicles
The Avenue	MOUNT SAINT THOMAS	Speeding vehicles and request for speed mitigation devices – VMS to be deployed
Kanahooka Road – vicinity of Lakeside Drive	KANAHOOKA	Speeding vehicles – VMS to be deployed
Burelli Street – intersection of Burelli Street and Harbour Street	WOLLONGONG	Excessive noise from exhaust of tuned vehicles and motor bikes – resident has recorded noise level of 95 dba

6 INFORMAL MATTERS

6.1 WOLLONGONG LGA, Various Locations – Ward 1, 2 and 3 – UCI

BACKGROUND

The UCI Road World Championships is the pinnacle International Road Cycling event, held annually. It is conducted by the Union Cycliste Internationale (UCI) the world governing body for cycling. The 2022 UCI RWC will be held for 8 consecutive days from 18 to 25 September 2022 and will include road races, time trials, team time trials, cultural and participation events.

Infrastructure works are required to facilitate the organisation and delivery of the event to ensure cyclist safety. The works will generally involve intersection modifications and the removal of traffic calming devices to improve rider safety and ensure an even playing field for cyclists.

11 project locations within the Wollongong Local Government Area have been identified as requiring modifications to the existing infrastructure on the road network. These locations are:

- Cliff Road
- George Hanley Drive
- Crown Street
- Gipps Road
- Cordeaux Road
- Carters Lane and Marlo Road*
- Campbell Street
- Carters Lane and Dixon Street
- Railway Parade
- Finish Line (Marine Drive)
- University Avenue

* - Note that this project is currently being delivered together with maintenance project for Marlo Rd reconstruction PJ-4332. No major Traffic impacts or Regulatory changes proposed.

The works proposed generally involve intersection modifications and the removal of traffic calming devices. The works are being proposed to facilitate the delivery of the event including improving rider safety and ensure an even playing field for cyclists.

CONSULTATION

No consultation is required.

PROPOSAL

Plans provided for the information of the Committee members.