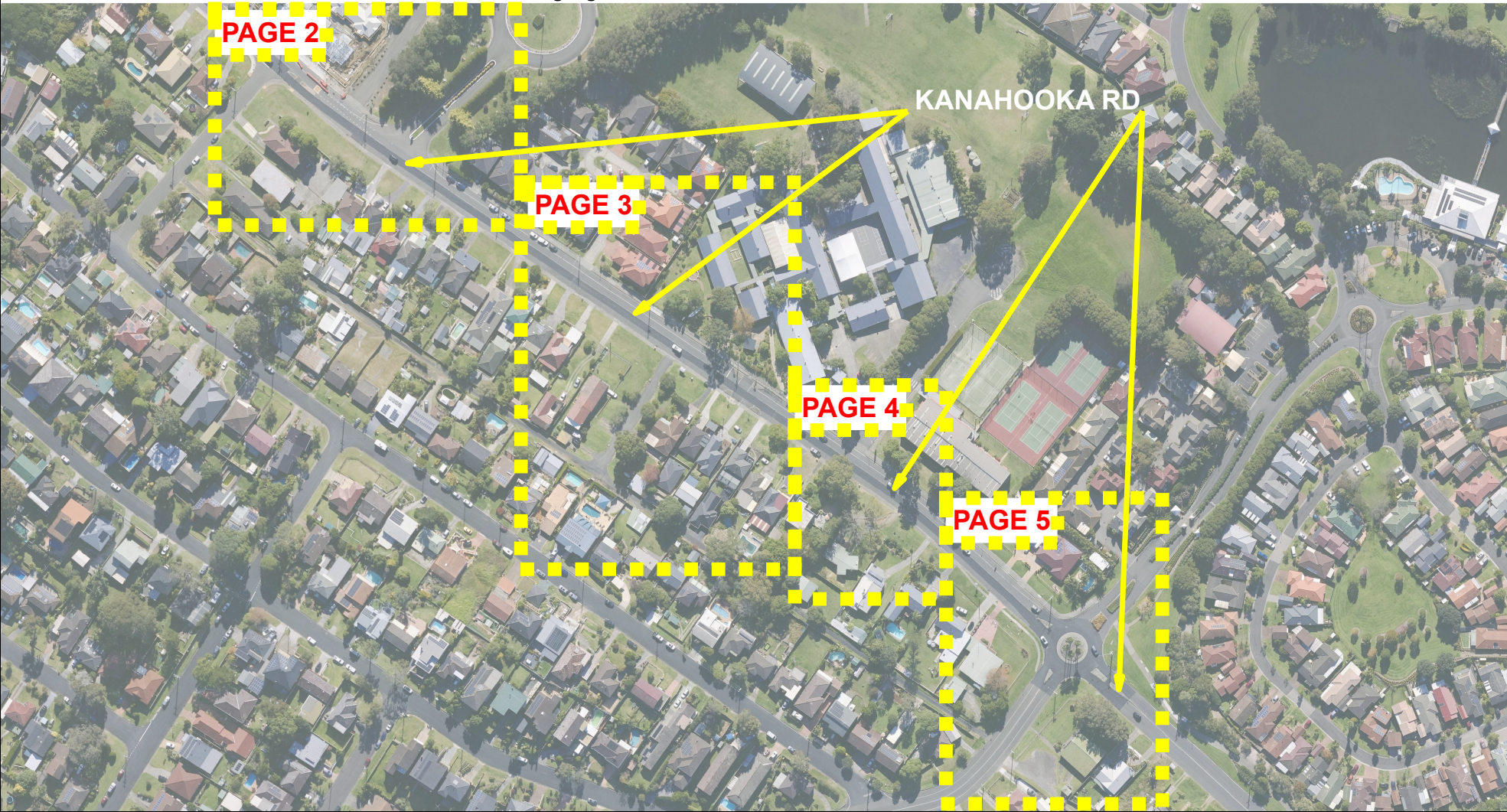


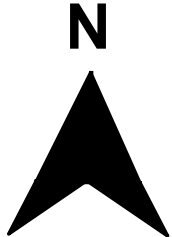
All line marking to be installed in accordance with Transport for NSW Delineation Guidelines
All signage to be installed in accordance with AS1742.2



Overview Plan
SRTS - HAYES PARK

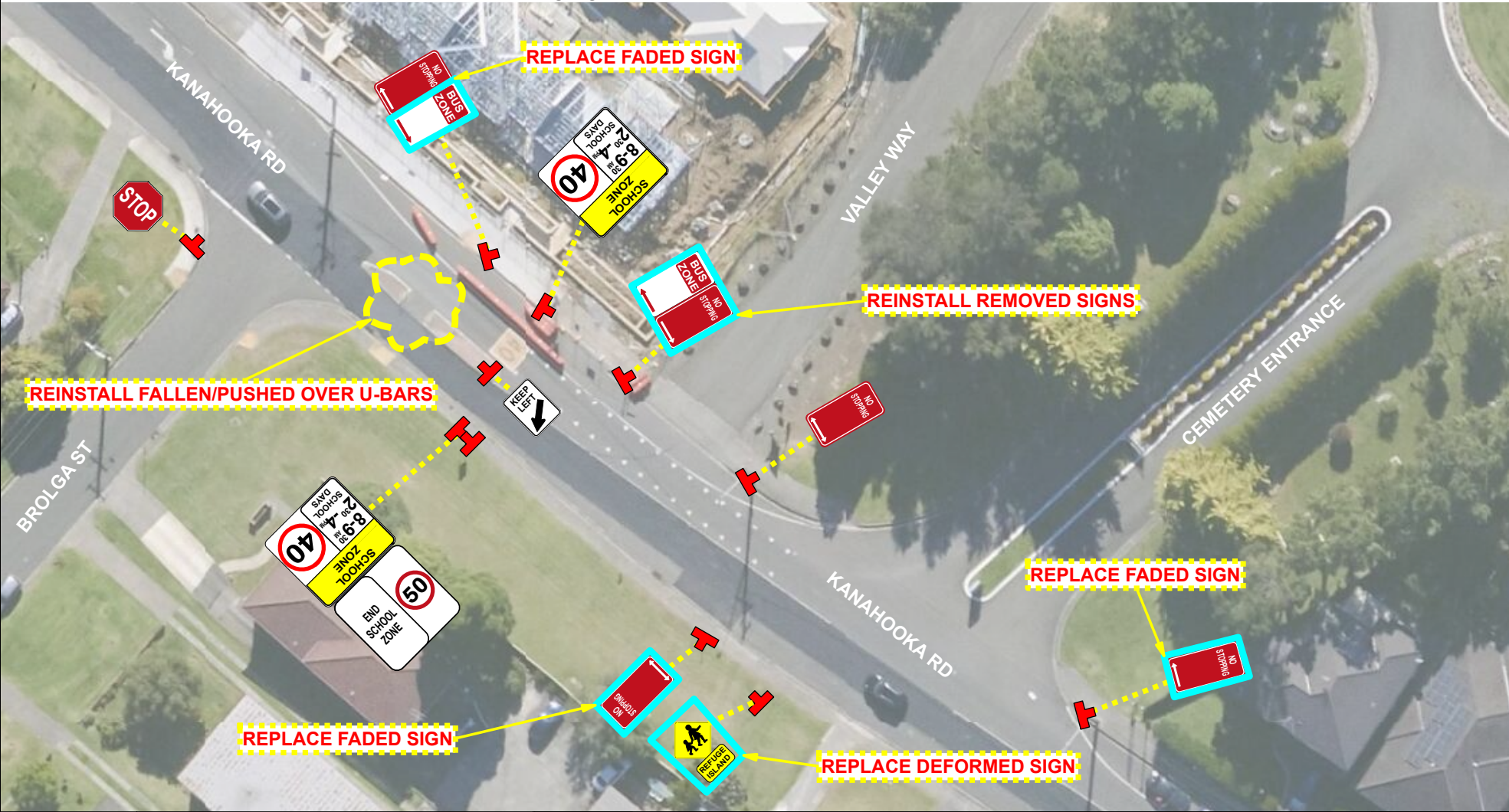
Legend

All signs illustrated in the following pages are current as of the date shown on the plan. All signs moving forward are to be designed in accordance with best practice guidelines of the time. All sign locations are approximates only.



Date	11/01/24	Street	KANAHOOKA ROAD		
Scale	1:500	Suburb	KANAHOOKA		
Page	1 of 5	Drawn	LW	Reviewed	NO

All line marking to be installed in accordance with Transport for NSW Delineation Guidelines
 All signage to be installed in accordance with AS1742.2



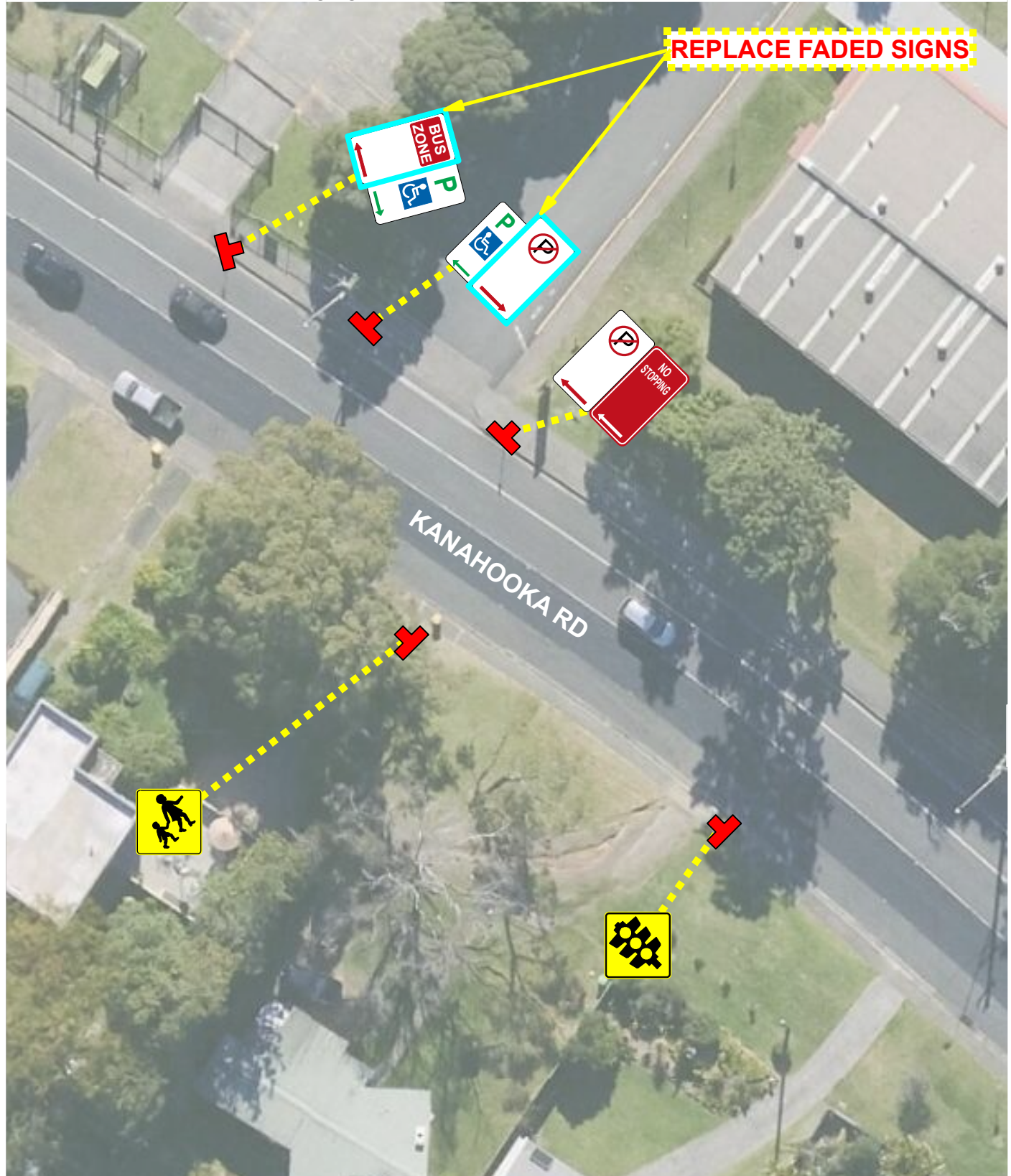
		Signage & Linemarking Plan SRTS - HAYES PARK				Legend		Existing Sign Pole													
Date	11/01/24	Street	KANAHOOKA ROAD			NO STOPPING (R5-400) Bus Zone (R5-20)	School Zone (R4-230n) 8:00AM-9:30AM 2:30PM-4:00PM SCHOOL DAYS		End School Zone (R4-231n) "50km/h"		Children Crossing (w6-3) Refuge Island (w8-25)										
Scale	1:500	Suburb	KANAHOOKA																		
Page	2 of 5	Drawn	LW	Reviewed	NO																

All line marking to be installed in accordance with Transport for NSW Delineation Guidelines
 All signage to be installed in accordance with AS1742.2



	Signage & Linemarking Plan SRTS - HAYES PARK		Legend		
	Date 11/01/24	Street KANAHOOKA ROAD	Existing Pole	No Stopping (R5-40)	
Scale 1:500	Suburb KANAHOOKA	No Stopping (R5-10)	No Stopping (R5-40)	Bus Zone (R5-20)	Unidirectional Hazard Marker (d4-1-2)
Page 3 of 5	Drawn LW	Reviewed NO	No Stopping (R5-40)	Bus Zone (R5-20)	Children Crossing (w6-3)

All line marking to be installed in accordance with Transport for NSW Delineation Guidelines
 All signage to be installed in accordance with AS1742.2



REPLACE FADED SIGNS

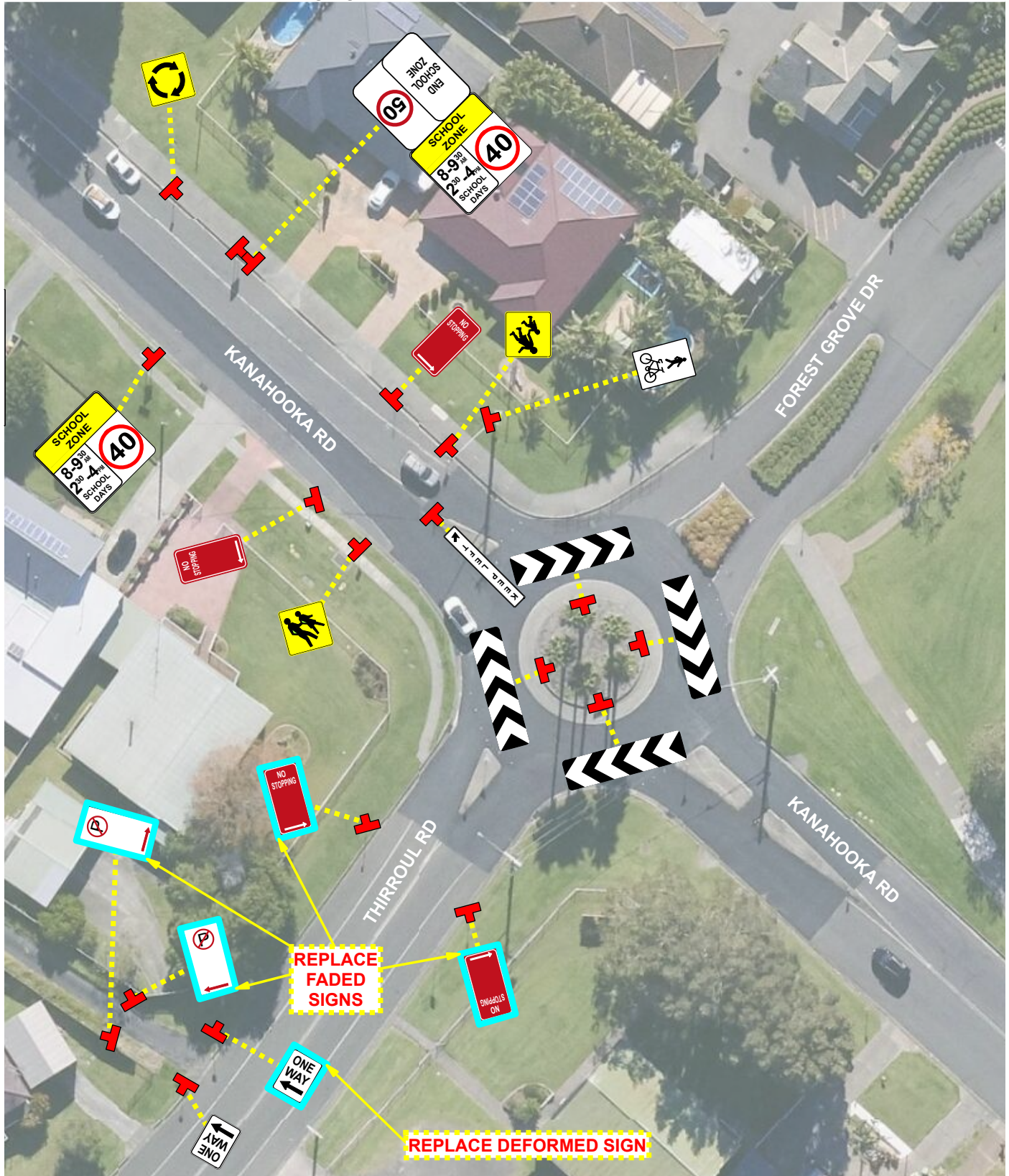


Signage & Linemarking Plan
 SRTS - HAYES PARK

Date	11/01/24	Street	KANAHOOKA ROAD		
Scale	1:500	Suburb	KANAHOOKA		
Page	4 of 5	Drawn	LW	Reviewed	NO

<p>Children Crossing Signals Ahead (w6-3)</p>	<p>Signals Ahead (W3-3-1)</p>	Existing Pole	<p>No Parking (R5-40)</p>	<p>Disability Parking (R5-10)</p>	<p>N</p>
		<p>Bus Zone (R5-20)</p>	<p>No Stopping (R5-400)</p>		

All line marking to be installed in accordance with Transport for NSW Delineation Guidelines
 All signage to be installed in accordance with AS1742.2



		Signage & Linemarking Plan SRTS - HAYES PARK		Legend		Existing Pole		No Stopping (R5-400)		No Parking (R5-40)		Shared Path (R8-2) 300 x 400 mm				
Date 11/01/24		Street KANAHOOKA ROAD		Children Crossing (W6-3)		Pedestrian (symbolic) (W6-1)		Roundabout (W6-7)		End School Zone (R4-231n) "50km/h"		Unidirectional Hazard Marker (d4-1-2)			Keep Left (r2-209)	
Scale 1:500		Suburb KANAHOOKA		School Zone (R4-230n) 8:00AM-9:30AM 2:30PM-4:00PM SCHOOL DAYS		Roundabout Hazard Marker (d4-1-2)		One Way (r2-2)		One Way (r2-2)		One Way (r2-2)				
Page 5 of 5		Drawn LW		Reviewed NO												