

# Disability Inclusion Action Plan

## Annual Progress Report 2017 - 2018

2016-2020

This is the second annual report of progress in the implementation of the Wollongong City Council Disability Inclusion Action Plan 2016 – 2020 which guides Council in meeting its requirements under the NSW Disability Inclusion Act 2014.

### The plan has four focus areas:

- Creating liveable communities;
- Improving access to services through better systems and processes;
- Promoting positive community attitudes and behaviours;
- Supporting access to meaningful employment.

The development of the plan involved extensive community consultation and Council continues to engage the community to ensure the priorities are current. A detailed Implementation plan and evaluation framework support the plan and measure our progress. An internal steering group with representatives across Council is overseeing the implementation of the plan.

### Highlights for 2017 - 2018

#### Annual Progress

Completed	Ongoing	In Progress (Projects)	Pending	Not Started
9	82	7	0	10



# Disability Inclusion Action Plan

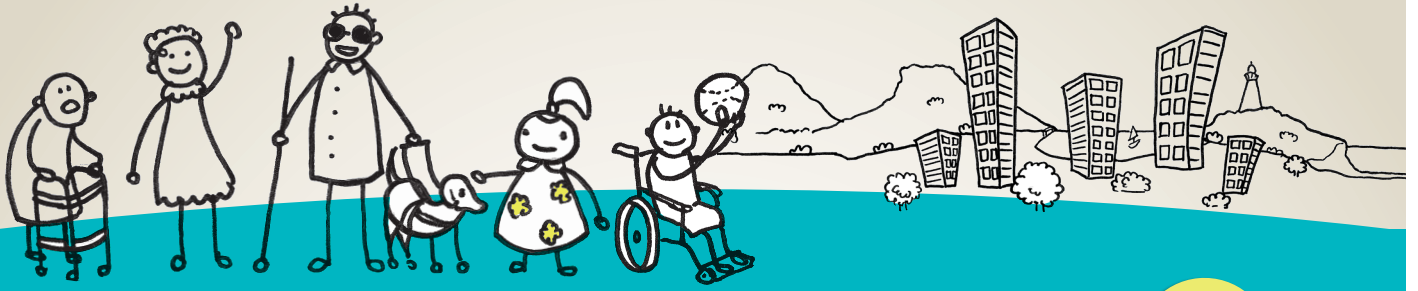
## Annual Progress Report 2017 - 2018

2016-2020

### Creating Liveable Communities

**Council has undertaken the following infrastructure projects to increase access to the built environment for people with disability:**

- Completed the Blue Mile Tramway Link project to improve accessibility to the Belmore Basin area and to the Continental Pool
- Installed an Adult Lift and Change table at Wests Unanderra Pool, Unanderra and an automated toilet at Pop Errington Park
- Completed Stage One of the accessible rainforest walk at the Wollongong Botanic Garden including a new entry off Robsons Road
- Built three new cabins at Council tourist parks that include accessible ramp access
- Improved access to several Council buildings including accessible toilets at Cringila and Coniston community halls, access to the kiosk at Mt Keira Summit and upgrades to the lift and balcony at the Wollongong Art Gallery
- Installed an accessible lift platform into Berkeley Pool, Berkeley
- Developed a Quick Links project where eight small projects to increase access were identified
- Upgraded kerb ramps at 24 crossing points, five cycle way /shared paths and six footpaths
- Improved access at 14 bus stops by creating paths of travel from the bus stop/shelter to the kerbside. Four of these upgrades incorporated seating and 5 incorporated shelters
- Upgraded six car parks including paths of travel to and from the car parks.



# Disability Inclusion Action Plan

## Annual Progress Report 2017 - 2018

2016-2020

### **Council is working towards a greater understanding of access across the city and has allocated funding in the 2017-18 budget to:**

- Develop a Public Toilet Strategy and work on the development of an implementation plan to deliver this strategy
- Develop a Foreshore and Beach Access Strategy to inform future access upgrades to our beaches and foreshore areas
- Collect data about access as part of the footpath condition audit
- Undertake an access audit of bus stops and shelters
- Undertake an audit of Council's accessible parking both on road and in car parks in key locations.

### **Improve Access to services through better systems and processes**

#### **Council has worked to increase access to information including:**

- Installation of communication boards at Towradgi, Stuart Park, Botanic Garden, Corrimal and Thirroul playgrounds
- Council is in the process of developing a new website. Increasing access to information for people with disability is a key goal of this project
- 15 Council officers completed Easy Read Training to build skills in preparing documents using easy read techniques.

#### **Council continues to be committed to consulting with people with disability. This includes:**

- Facilitating a mid term - Disability Inclusion Action Plan report back and engagement with people with disability
- Engaging people with disability in the development of the Fairy Creek Master Plan.



# Disability Inclusion Action Plan

## Annual Progress Report 2017 - 2018

2016-2020

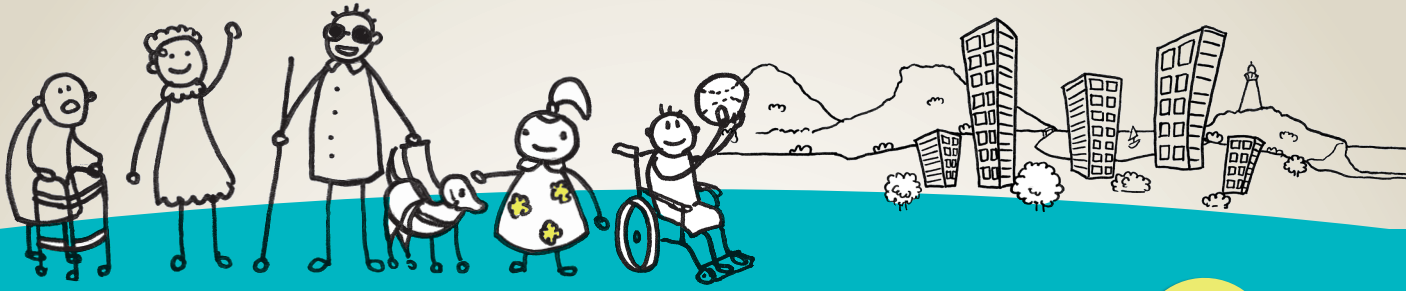
### Promote Positive Community Attitudes and Behaviours

**Council has worked towards promoting positive community attitudes and behaviours towards people with disability through the delivery of:**

- Employ-ABILITY local stories project to raise awareness of the Employ-ABILITY of people with disability through a series of short stories of local people with a disability in paid employment.

**Council has worked to increase opportunities for people with disability to participate in community activities. This includes:**

- Improved access to New Year's Eve and Australia Day celebrations for people with disability. New Year's Eve included a performance by an aerial artist with disability, an Auslan interpreter signing the countdown and a signed singing performance
- Supported a range of recreation opportunities at Beaton Park Leisure Centre including Recreation Illawarra a partnership with the Disability Trust, Illawarra Academy of Sport group, the Water Rats swim group, and a gymnastics program for children with autism in the school holidays
- Producing a calendar of events to celebrate International Day of People with a Disability 'Celebration of Ability'
- Provided Ceramic Workshops for people with disability at the Wollongong Art Gallery.



# Disability Inclusion Action Plan

## Annual Progress Report 2017 - 2018

2016-  
2020

### Supporting Access to Meaningful Employment

**Council has worked to support people with disability seeking employment. Initiatives included:**

- Supported the Workers of Wollongong program by providing work experience opportunities for people with disability at Council's tourist parks
- Participated in mock interviews with people with disability to assist them with preparing for interviews
- Continued to promote job vacancies at Council through disability networks.