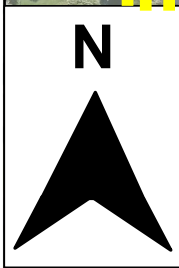
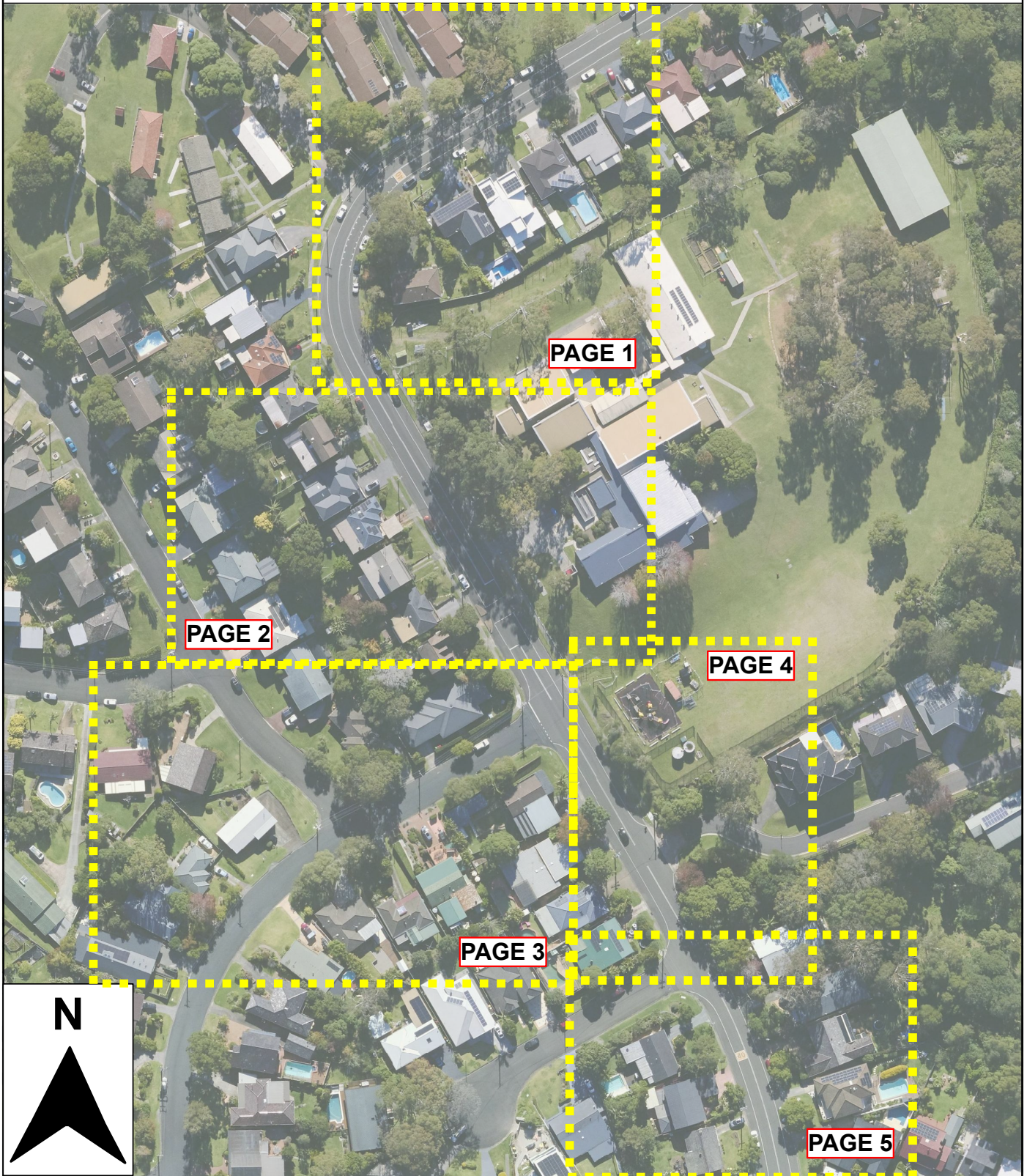


All line marking to be installed in accordance with Transport for NSW Delineation Guidelines
All signage to be installed in accordance with AS1742.2

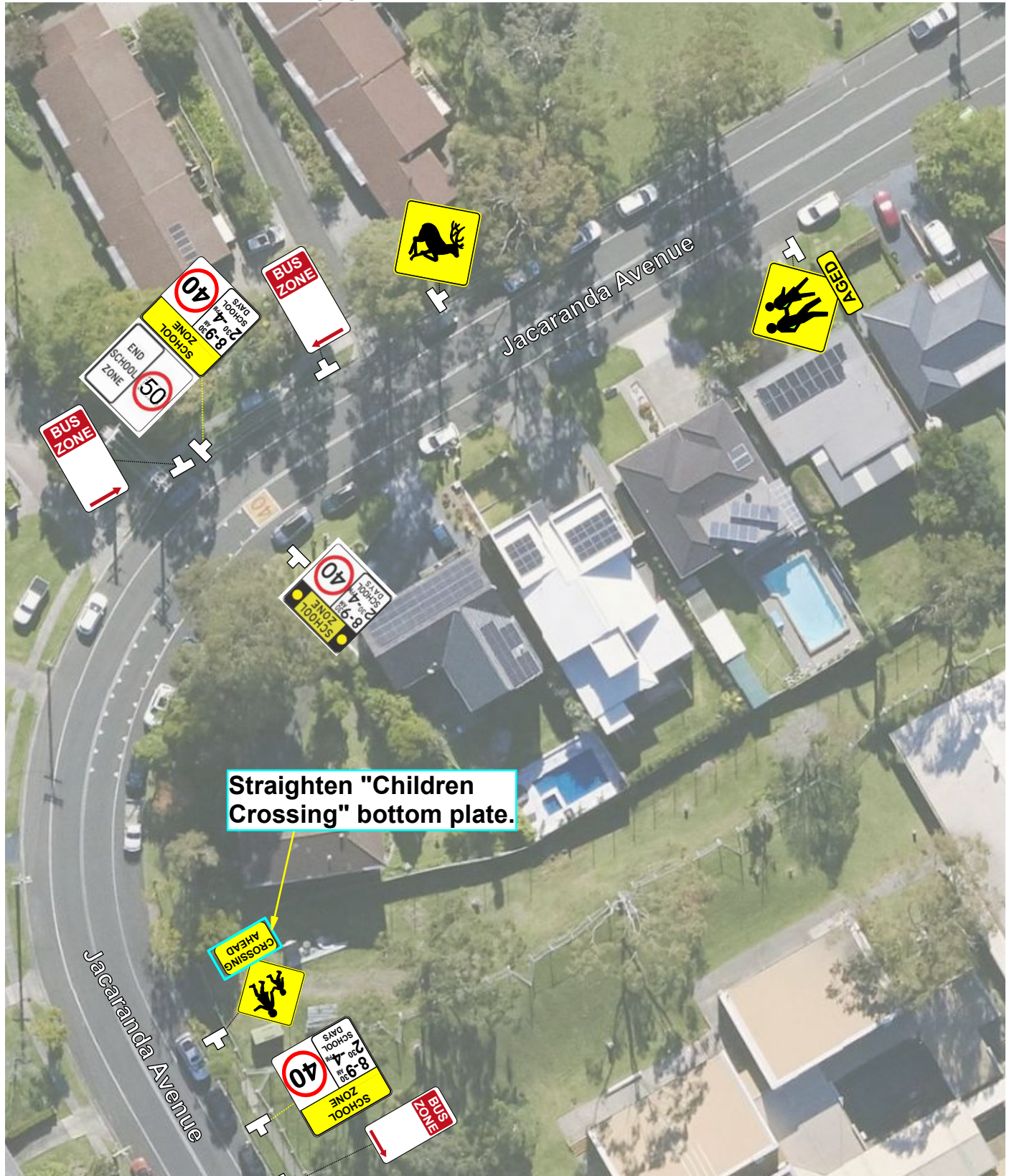


Safer Routes to School
 Sig & Line Plan
 Nareena Heights Public School

Date	11/03/2024	Street	Various		
Scale	1:500	Suburb	Figtree		
Page	Title	Drawn	NO	Reviewed	N/A

All signs and lines illustrated in the following pages are current as of the date shown on the plan. All signs and lines moving forward are to be designed in accordance with best practice guidelines of the time. All sign locations are approximates only.

All line marking to be installed in accordance with Transport for NSW Delineation Guidelines
 All signage to be installed in accordance with AS1742.2



Straighten "Children Crossing" bottom plate.



Nareena Hills Public School
 Safer Routes to School
 Sign & Line Plan

Date	11/03/2023	Street	Various		
Scale	1:500	Suburb	Figtree		
Page	1 of 5	Drawn	NO	Reviewed	N/A

Legend

Existing Pole

SCHOOL ZONE 40 School Zone (with lights) r4-230-1

SCHOOL ZONE 40 School Zone r4-230

END SCHOOL ZONE 50 End School Zone r4-231 (50)

BUS ZONE Bus Zone (L)(R) r5-20

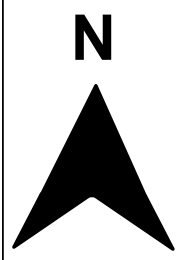
AGED Aged w8-18

CROSSING AHEAD Crossing Ahead w8-14

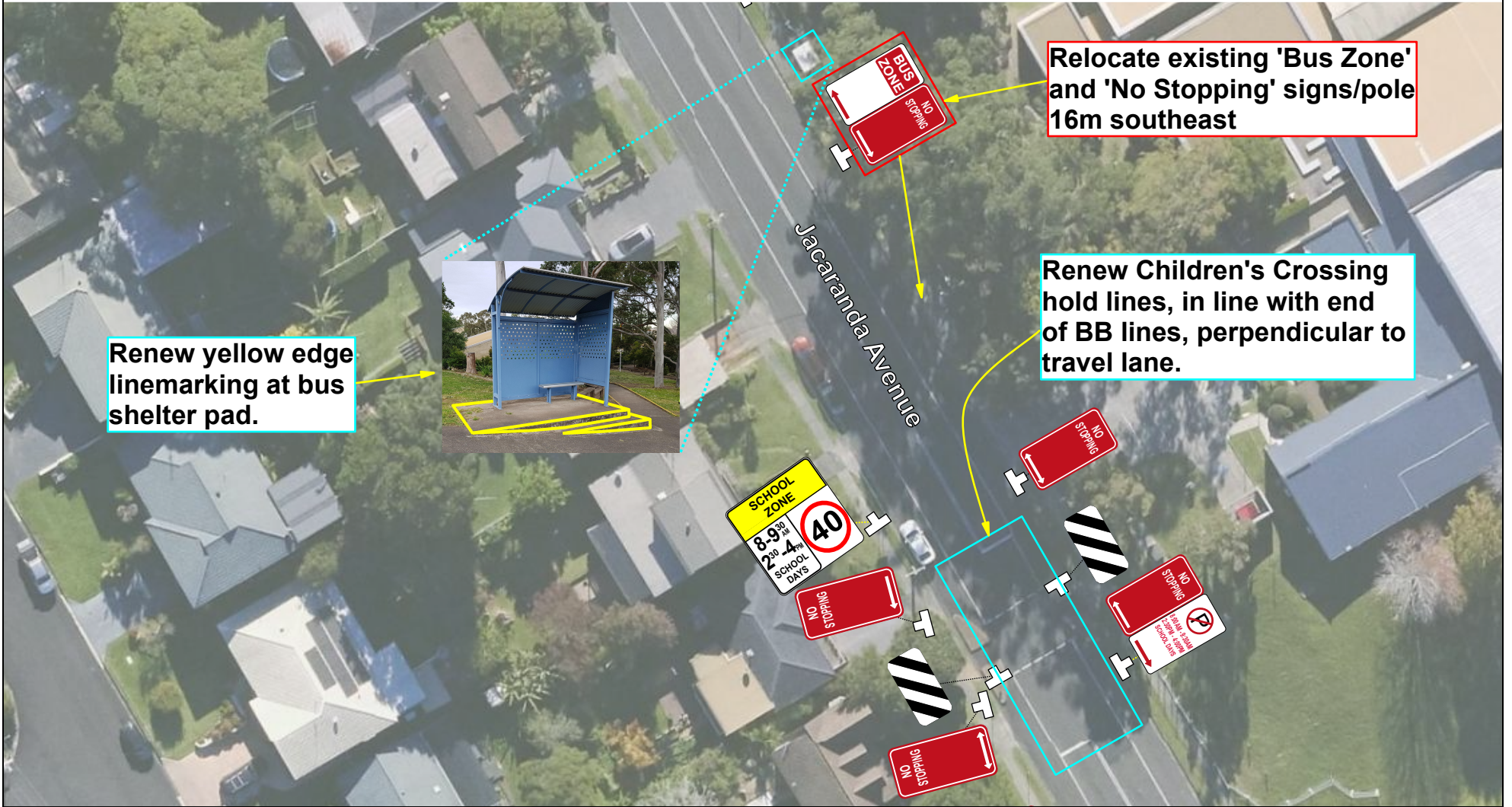
Children Crossing w6-3

Pedestrian w6-1

Deer w5-51



All line marking to be installed in accordance with Transport for NSW Delineation Guidelines
 All signage to be installed in accordance with AS1742.2



Nareena Hills Public School
 Safer Routes to School
 Sign & Line Plan

Date	11/03/2023	Street	Various		
Scale	1:500	Suburb	Figtree		
Page	2 of 5	Drawn	NO	Reviewed	N/A

Legend

Existing Sign Pole



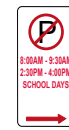
School Zone r4-230



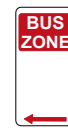
Width marker g4-3



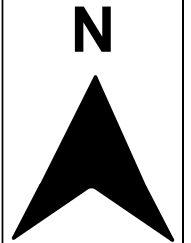
No Stopping r5-400



No Parking (R) (time specified) School days r5-41



Bus Zone (R) r5-20



All line marking to be installed in accordance with Transport for NSW Delineation Guidelines
 All signage to be installed in accordance with AS1742.2



Install missing w6-3 (yellow) Children sign on power pole above existing School sign



Nareena Hills Public School
 Safer Routes to School
 Sign & Line Plan

Legend

Existing Sign Pole



Children Crossing
w6-3



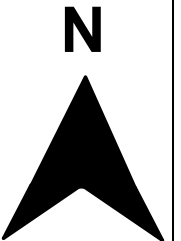
School w8-14



No Stopping r5-400

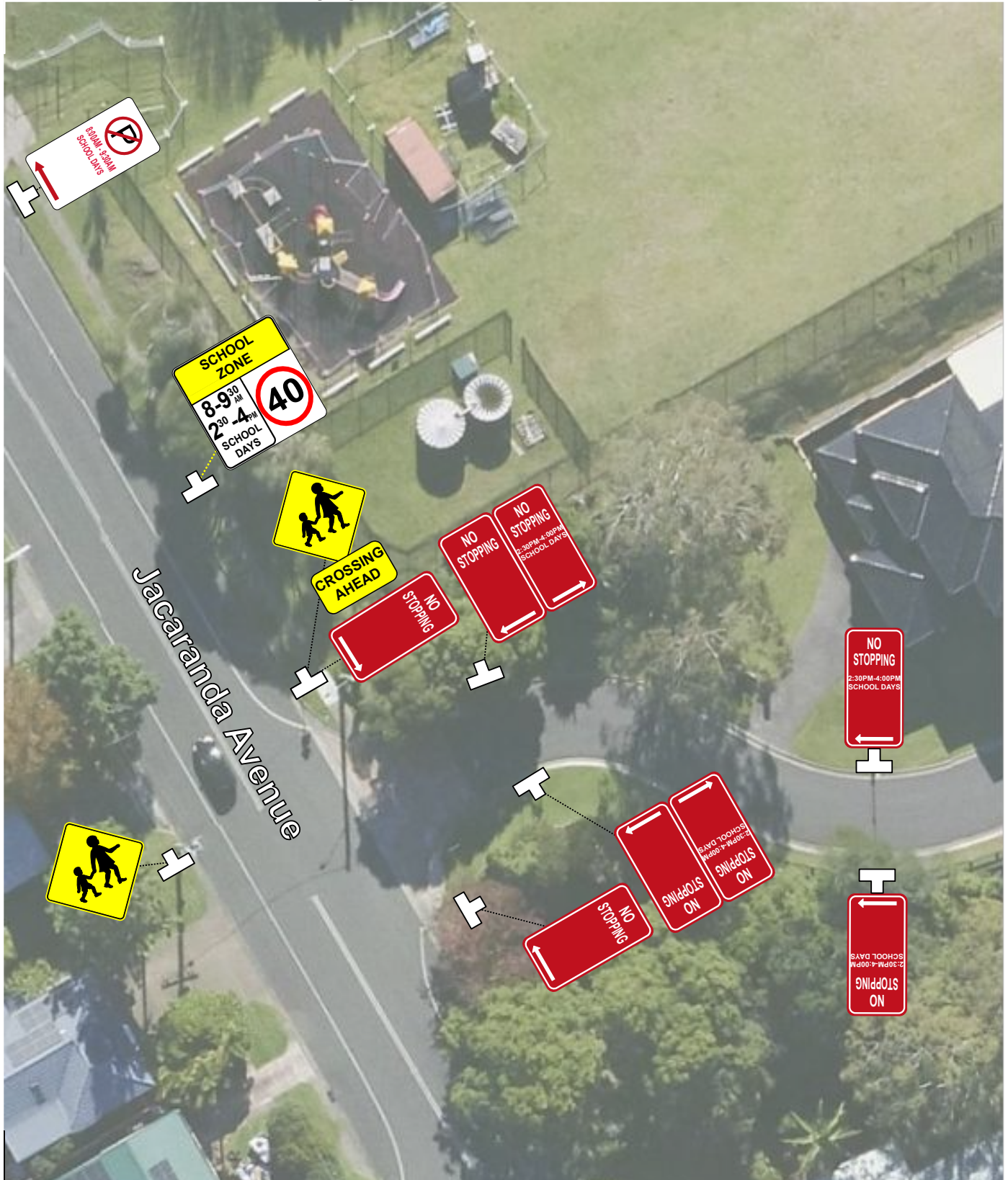


Stop r1-1



Date	11/03/2023	Street	Various		
Scale	1:500	Suburb	Figtree		
Page	3 of 5	Drawn	NO	Reviewed	N/A

All line marking to be installed in accordance with Transport for NSW Delineation Guidelines
 All signage to be installed in accordance with AS1742.2

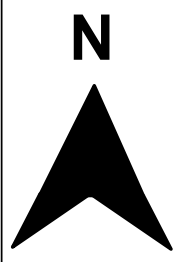


Nareena Hills Public School
 Safer Routes to School
 Sign & Line Plan

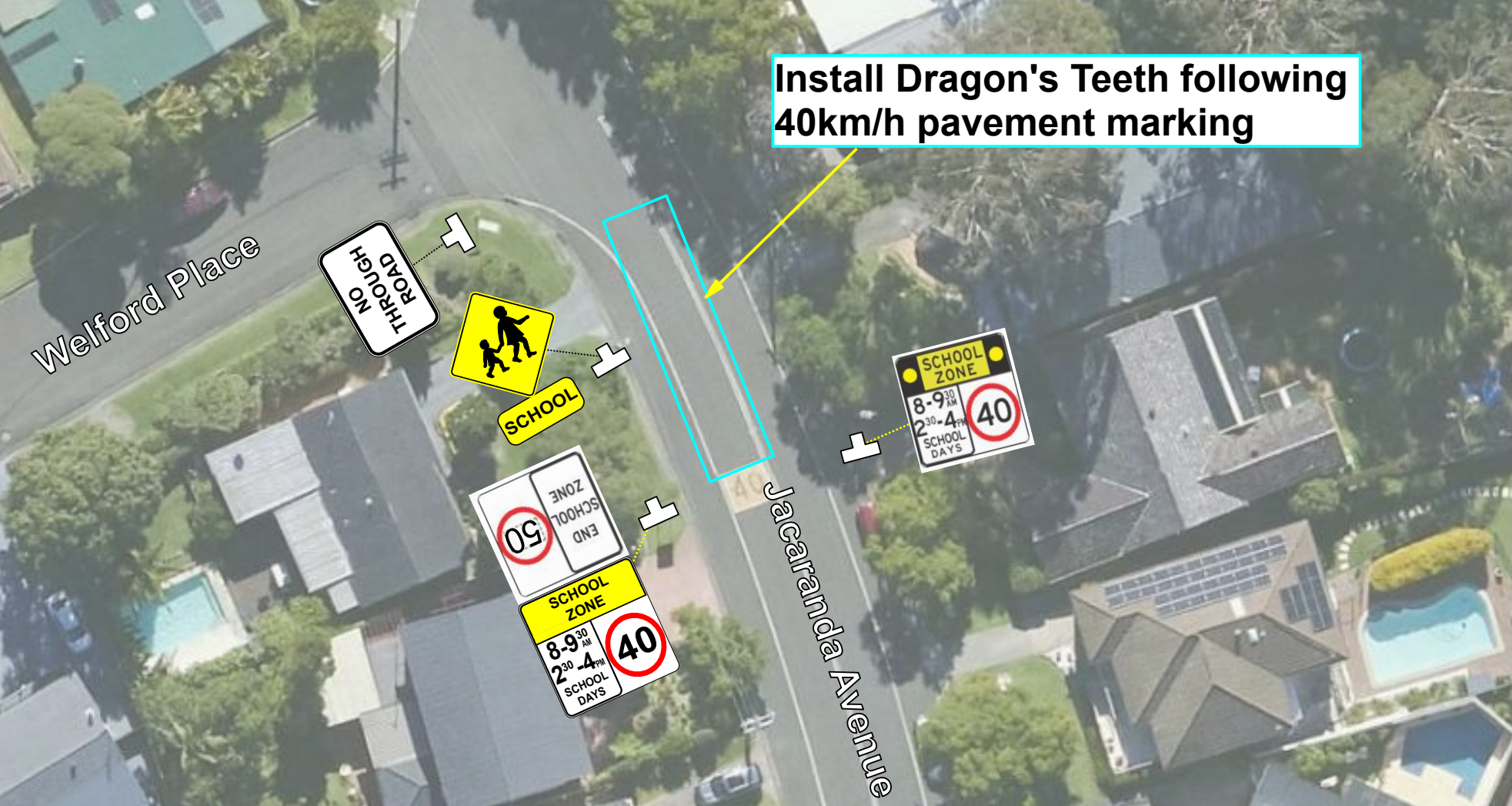
Date	11/03/2023	Street	Various		
Scale	1:500	Suburb	Figtree		
Page	4 of 5	Drawn	NO	Reviewed	N/A

Legend

- Existing Pole
- Children Crossing w6-3
- Crossing Ahead w8-14
- SCHOOL ZONE 40
- NO STOPPING r5-400 (with times spec. r5-403)
- No Parking (L) (time specified)
- NO STOPPING SCHOOL DAYS
- SCHOOL ZONE 40 (8-9 AM, 2-4 PM SCHOOL DAYS)
- NO STOPPING ON
- NO STOPPING ON SCHOOL DAYS



All line marking to be installed in accordance with Transport for NSW Delineation Guidelines
 All signage to be installed in accordance with AS1742.2



Nareena Hills Public School
 Safer Routes to School
 Sign & Line Plan

Legend

Existing Sign Pole



School Zone (with lights) r4-230-1



School Zone r4-230



End School Zone r4-231 (50)



Children Crossing w6-3



School w8-14



No Through Road g9-18

Date	11/03/2023	Street	Various		
Scale	1:500	Suburb	Figtree		
Page	5 of 5	Drawn	NO	Reviewed	N/A

