

ITEM 14

TENDER T1000066 - GRAND PACIFIC WALK - CLIFTON SCHOOL PARADE TO 347 LAWRENCE HARGRAVE DRIVE - PARKING, FOOTPATH, BOARDWALK AND OBSERVATION DECK CONSTRUCTION

This report recommends acceptance of a tender for the construction of a component of the Grand Pacific Walk in Clifton including road works, drainage structures, formalised parking, footpath, elevated boardwalk and an observation deck in accordance with the requirements of the Local Government Act 1993 and the Local Government (General) Regulation 2021.

This project forms part of the construction of the Grand Pacific Walk Master Plan to develop a safe route for both pedestrians and cyclists from the Royal National Park through to Lake Illawarra, taking advantage of the numerous spectacular outlooks and areas of high scenic quality.

RECOMMENDATION

- 1 In accordance with Section 178(1)(a) of the Local Government (General) Regulation 2021, Council accept the tender of Cadifern Pty Ltd for the construction of the Grand Pacific Walk and observation deck at Clifton, in the sum of \$1,647,737.80, including GST.
- 2 Council delegate to the General Manager the authority to finalise and execute the contract and any other documentation required to give effect to this resolution.
- 3 Council grant authority for the use of the Common Seal of Council on the contract and any other documentation, should it be required, to give effect to this resolution.

REPORT AUTHORISATIONS

Report of: Glenn Whittaker, Manager Project Delivery

Authorised by: Joanne Page, Director Infrastructure + Works - Connectivity Assets + Liveable City

ATTACHMENTS

- 1 Location Plan

BACKGROUND

This project provides another link for the Grand Pacific Walk in continuing to achieve the master plan objectives. In this stage of works, the pathway from the Sea Cliff Bridge will be extended past the recently reopened Clifton Hotel and a new viewing platform will be constructed as the path extends further south of the Hotel.

Tenders were invited for this project by the Open tender method with a close of tenders of 10.00 am on 2 August 2022.

Five (5) tenders were received by the close of tenders and all tenders have been scrutinised and assessed by a Tender Assessment Panel constituted in accordance with Council's Procurement Policies and Procedures and comprising representatives of the Project Delivery, Infrastructure Planning and Strategy, and Governance and Customer Service Divisions.

The Tender Assessment Panel assessed all tenders in accordance with the following assessment criteria and weightings as set out in the formal tender documents:

Mandatory Criteria

- 1 Satisfactory references from referees for previous projects of similar size and scope
- 2 Financial assessment acceptable to Council which demonstrates the tenderer's financial capacity to undertake the works
- 3 A Health & Safety Policy and WHS Management System Manual or Plan

4 TfNSW prequalification R2 and A1

Assessable Criteria

- 1 Cost to Council 35%
- 2 Appreciation of scope of works and construction methodology – 20%
- 3 Experience and satisfactory performance in undertaking projects of similar size, scope and risk profile – 15%
- 4 Staff qualifications and experience – 5%
- 5 Proposed sub-contractors – 5%
- 6 Project Schedule – 5%
- 7 Workplace health and safety management system and Environmental management policies and procedures – 5%
- 8 Demonstrated strengthening of local economic capacity – 10%

The mandatory assessment criteria have been met by the recommended tenderer.

The Tender Assessment Panel utilised a weighted scoring method for the assessment of tenders which allocates a numerical score out of 5 in relation to the level of compliance offered by the tenders to each of the assessment criteria as specified in the tender documentation. The method then takes into account pre-determined weightings for each of the assessment criteria which provides for a total score out of 5 to be calculated for each tender. The tender with the highest total score is considered to be the tender that best meets the requirements of the tender documentation in providing best value to Council. Table 1 below summarises the results of the tender assessment and the ranking of tenders.

TABLE 1 – SUMMARY OF TENDER ASSESSMENT

| Name of Tenderer | Ranking |
|--------------------------------|----------------|
| Cadifern Pty Ltd | 1 |
| Dynamic Civil Pty Ltd | 2 |
| Nace Civil Engineering Pty Ltd | 3 |
| Coastwide Civil Pty Ltd | 4 |
| Ford Civil Contracting Pty Ltd | NON CONFORMING |

PROPOSAL

Council should authorise the engagement of Cadifern Pty to carry out the construction of Grand Pacific Walk at Clifton in accordance with the scope of works and technical specifications developed for the project.

The recommended tenderer has satisfied the Tender Assessment Panel that it is capable of undertaking the works to Council's standards and in accordance with the technical specification.

An acceptable financial capability assessment has been received in relation to the recommended tenderer.

Referees nominated by the recommended tenderer have been contacted by the Tender Assessment Panel and expressed satisfaction with the standard of work and methods of operation undertaken on their behalf.

CONSULTATION AND COMMUNICATION

- 1 Members of the Tender Assessment Panel
- 2 Nominated Referees

PLANNING AND POLICY IMPACT

This report contributes to the delivery of Our Wollongong 2032 Goal 5. It specifically delivers on the following:

| Community Strategic Plan 2032 | Delivery Program 2022-2026 |
|--|----------------------------|
| Strategy | Service |
| 6.7 Improve active transport links and connectivity to our unique places and spaces, including marine access long the Local Government Area and accessibility from the Central Business District to the foreshore. | Transport Services |

RISK ASSESSMENT

The risk in accepting the recommendation of this report is considered low on the basis that the tender process has fully complied with Council's Procurement Policies and Procedures and the Local Government Act 1993.

The risk of the project works is considered medium based upon Council's risk assessment matrix and appropriate risk management strategies will be implemented.

SUSTAINABILITY IMPLICATIONS

This project supports a health community by providing safe and accessible infrastructure for walking and cycling.

The design solution is in accordance with engineering standards relating to asset life and products nominated are fit for purpose in a coastal environment.

Local development considerations have been included in the tender assessment.

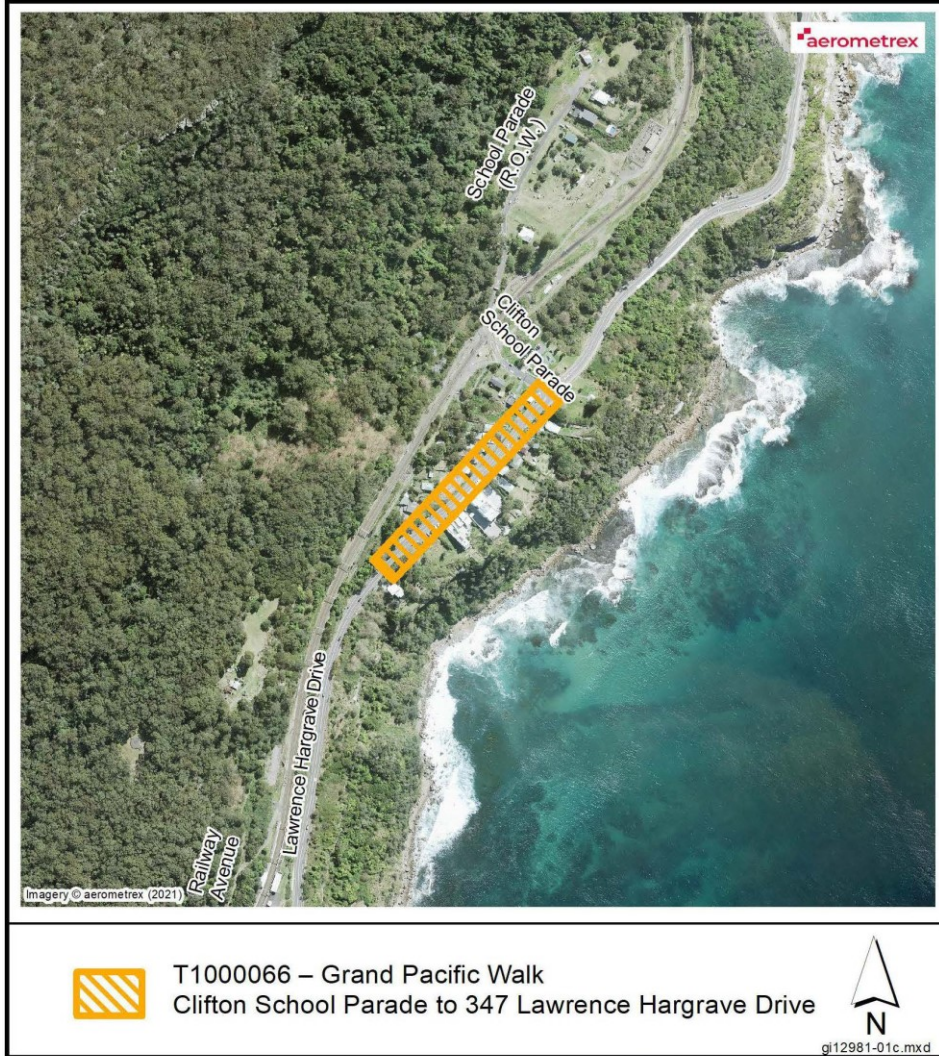
FINANCIAL IMPLICATIONS

It is proposed that the total project be funded from the following source/s as identified in the Operational Plan –

Capital Budget 2022-23

CONCLUSION

Cadifern Pty Ltd have provided an acceptable tender for these works and Council should endorse the recommendations of this report.

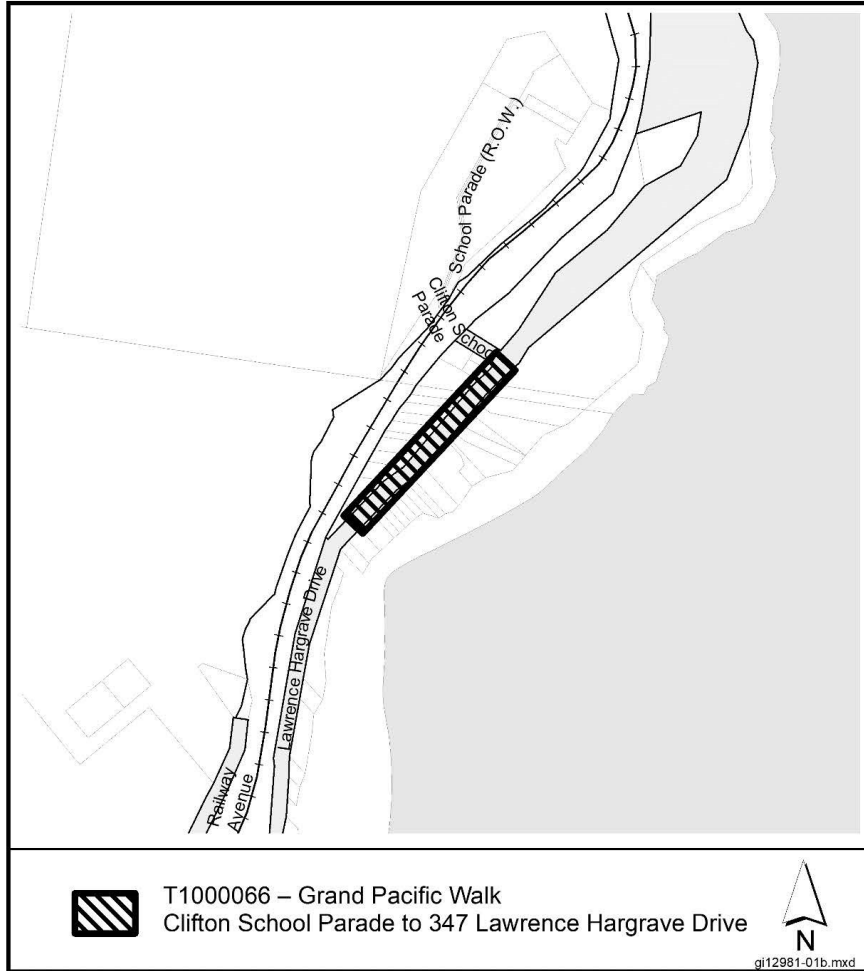


T1000066 – Grand Pacific Walk
Clifton School Parade to 347 Lawrence Hargrave Drive



g12981-01c.mxd

While every effort has been made to ensure the highest possible quality of data, no liability will be accepted for any inaccuracy of the information shown.
Copyright © Wollongong City Council, Mapping Services Section. This map may not be reproduced in any form whatever without the express written permission of Wollongong City Council.



While every effort has been made to ensure the highest possible quality of data, no liability will be accepted for any inaccuracy of the information shown.
Copyright © Wollongong City Council, Mapping Services Section. This map may not be reproduced in any form whatever without the express written permission of Wollongong City Council.