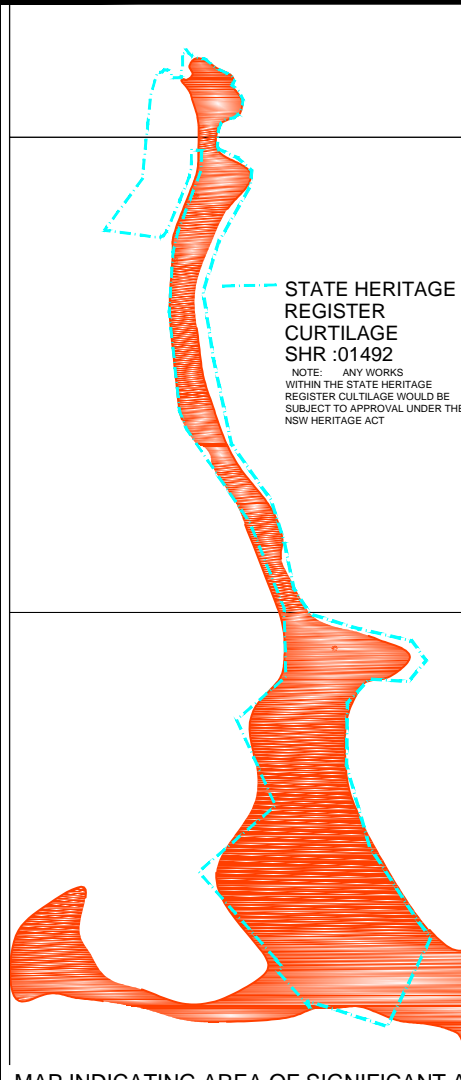


LEGEND

- BOUNDARY (Yellow dashed line)
- ON ROAD CYCLEWAY (Bike icon)
- EXISTING SHARED PATHWAY NETWORK (Orange dashed line)
- NGARABA-AAN TRAIL APPRECIATING SCENIC BEAUTY & CELEBRATING ABORIGINAL CULTURAL HERITAGE VALUES OF THE AREA (Blue dashed line)
- POTENTIAL PUBLIC ART AND OR INTERPRETIVE SIGNAGE AS IDENTIFIED IN NGARABA-AAN TRAIL INTERPRETATION PLAN PREPARED BY TRAPNELL INTERPRETATION (IS icon)
- LOCATION OF HISTORIC FEATURES (Orange square)
- POTENTIAL WAY FINDING SIGNAGE AT KEY LOCATIONS (Yellow triangle with 'S')
- POTENTIAL LOCATION OF STREET FURNITURE EG. SEAT, BENCHES, PICNIC SETTING (Purple rectangle)
- EXISTING VEGETATION TO BE RETAINED & MAINTAINED AS IDENTIFIED BY VEGETATION MANAGEMENT PLAN PREPARED BY JENNIFER NEIL TREECREEPER INDIGENOUS LAND MANAGEMENT (Green leaf icon)
- EXISTING VEGETATION TO BE REHABILITATED AS IDENTIFIED BY VEGETATION MANAGEMENT PLAN PREPARED BY JENNIFER NEIL TREECREEPER INDIGENOUS LAND MANAGEMENT (Light green leaf icon)
- POTENTIAL TREE PLANTING WITH TREE GUARD & ART PANELS (Green tree icon)
- IMPROVE EXISTING STORM WATER DISCHARGE POINT (Red hatched area)

- PORT KEMBLA HERITAGE PARK**
 - x POTENTIAL INTERPRETIVE SIGNS TO CONVEY THE HISTORY OF THE HERITAGE PARK AND THE EXISTING DEFENCE STRUCTURES SUBJECT TO CONSULTATION WITH LAND OWNER & REQUIRED APPROVALS
 - x OPPORTUNITY FOR ADDITIONAL SEATING
- POTENTIAL TREE PLANTING**
 - x OPPORTUNITY FOR ADDITIONAL TREES TO COMPLEMENT EXISTING TREE PLANTING TO PROVIDE SHADE. EXAMPLE OF SPECIES BANKSIA INTEGRIFOLIA (MATURE HEIGHT MAX. 10M)
- EXISTING ABORIGINAL MOTIF CELEBRATING SIGNIFICANT ABORIGINAL SITE**
 - x REFLECTION POINT ON THE NGARABA-AAN TRAIL ROUTE PROPOSED FOR MARKER PLINTH AS RECOMMENDED IN INTERPRETATION PLAN PREPARED BY TRAPNELL INTERPRETATION DESCRIBING MIDDENS AS EVIDENCE OF MANY THOUSANDS OF YEARS OCCUPATION BY ONGOING ABORIGINAL COMMUNITIES
 - x IMPLEMENT VEGETATION MANAGEMENT PLAN TO REDUCE WEED GROWTH & REHABILITATE EXISTING VEGETATION AREAS
- EMERGENCY ACCESS POINT**
 - x ACCESS TO NORTH BEACH (MM BEACH) TO BE MAINTAINED AT ALL TIMES
 - x POTENTIAL LOCATION OF FITNESS EQUIPMENT
- SIGNAGE & INTERPRETATION**
 - x ADDITIONAL INTERPRETIVE SIGNS AT THE GUN EMPLACEMENT AT THE NORTHERN END OF MM BEACH TO CONVEY THE HISTORY OF THE EXISTING DEFENCE STRUCTURES.
- MM BEACH CAR PARK & BEACH ENTRANCE**
 - x REFLECTION POINT ON THE NGARABA-AAN TRAIL ROUTE PROPOSED LOCATION FOR:
 - x MM KEMBLA COMMEMORATIVE PLINTH LASER-CUT STEEL THEME PANEL & STORY PLINTH TO CELEBRATE SIGNIFICANT ABORIGINAL HERITAGE VALUES AS RECOMMENDED IN INTERPRETATION PLAN
 - x POTENTIAL IMPROVEMENTS TO PUBLIC AMENITIES (EG. BEACH SHOWER, DRINK FOUNTAIN WITH DOG BOWL)
 - x POTENTIAL ADDITIONAL SEATING & PICNIC BENCHES AND FITNESS EQUIPMENT
 - x IMPROVEMENT TO THE EXISTING CAR PARK REPLACING THE EXISTING BOLLARDS WITH TRAFFICABLE BARRIERS, POTENTIAL TREE PLANTING WITH TREE GUARDS WITH ART PANELS.



MAP INDICATING AREA OF SIGNIFICANT ABORIGINAL CULTURAL HERITAGE WITH STUDY AREA

MM BEACH, BOILERS POINT, FISHERMANS BEACH AND HILL 60 PARK HILL 60 AND ITS ENVIRONS (MM BEACH, BOILERS POINT, FISHERMANS BEACH AND HILL 60 PARK) CONTAIN A RARE SUITE OF ABORIGINAL SITES WHICH DEMONSTRATE THE EVOLVING PATTERN OF ABORIGINAL CULTURAL HISTORY AND THE ABORIGINAL LAND RIGHTS STRUGGLE. THE QUALITY, EXTENT AND DIVERSITY OF THE PREHISTORIC ARCHAEOLOGICAL REMAINS AT THE PLACE ARE RARE ON THE NSW COAST PARTICULARLY IN THE LOCAL REGION. THESE INCLUDE EXTENSIVE SHELL MIDDEN DEPOSITS RICH IN STONE ARTEFACTS AND BURIALS. DRAFT CONSERVATION MANAGEMENT PLAN PREPARED BY NICHE APRIL 2015

- KEY RECOMMENDATIONS CONSERVATION MANAGEMENT PLAN PREPARED BY NICHE APRIL 2015**
- x UNDERTAKE AN ARCHAEOLOGICAL SURVEY OF EXISTING, AND FORMER, WORLD WAR TWO ITEMS TO FURTHER IDENTIFY AREAS OF ARCHAEOLOGICAL SENSITIVITY
 - x DEVELOP INTERPRETIVE SIGNAGE AND PUBLIC ARTWORK, POTENTIALLY INCORPORATING THE HISTORY OF THE AREA AND LOCAL FAUNA AND FLORA. INFORMATION SIGN BOARD/S AND PUBLIC ARTWORK ADDRESSING THE HISTORY OF THE AREA AND LOCAL FLORA AND FAUNA. INSTALLATIONS MAY ALSO INCORPORATE PHOTOGRAPHS.
 - x ENGAGE A STRUCTURAL ENGINEER TO COMPLETE AN AUDIT OF THE WORLD WAR TWO TUNNELS TO IDENTIFY WHETHER PUBLIC VISITATION WOULD BE APPROPRIATE AND SAFE
 - x ESTABLISH A WALKING TRACK AROUND THE RESERVE TO BETTER ENABLE PUBLIC APPRECIATION OF ITS NATURAL AND CULTURAL HERITAGE VALUES.
 - x INSTALL ADDITIONAL SEATING ALONG MM BEACH TO BETTER ENABLE PUBLIC APPRECIATION OF VISTAS AND THE SITE SETTING.
 - x REMOVE INVASIVE VEGETATION WITHIN, AND PHYSICALLY ATTACHED TO, ALL HERITAGE ITEMS. IF THE VEGETATION IS IN DIRT ON TOP OF THE STRUCTURES IT CAN REMAIN.
 - x APPLY A PROTECTIVE COATING TO WORLD WAR TWO ITEMS SHOWING SIGNS OF DETERIORATION SUCH AS RUST.
 - x REMOVE GRAFFITI FROM THE WORLD WAR TWO ITEMS WITHOUT DAMAGING THE UNDERLYING SURFACE OR ORIGINAL FINISH. IF THE ORIGINAL SURFACE WAS ALSO PAINTED THEN PROMINENT GRAFFITI SHOULD BE PAINTED OVER WITH A SUITABLE PAINT CLOSE TO THE ORIGINAL SURFACE COLOUR.
 - x MAINTAIN THE OBSERVATION DECK.
 - x TRIM VEGETATION AROUND THE OBSERVATION DECK AND OTHER VIEWING PLATFORMS.
 - x DEVELOP AND IMPLEMENT A PROGRAM TO MONITOR THE CONDITION OF THE HERITAGE ITEMS TO INFORM FUTURE

NOTE: ANY WORKS WITHIN THE STATE HERITAGE REGISTER CURTILAGE WOULD BE SUBJECT TO APPROVAL UNDER THE NSW HERITAGE ACT

IMAGE OF CONCEPT DESIGN FOR MARKER PLINTH PROPOSED NEAR EXISTING ABORIGINAL MOTIF RECOMMENDED IN NGARABA-AAN TRAIL INTERPRETATION PLAN. DENOTED AS POINT 3

IMAGE OF CONCEPT DESIGN FOR STORY PLINTH AT CAR PARK AT MM BEACH AS PART OF THE NGARABA-AAN TRAIL. DENOTED AS POINT 6

PHOTO OF EXISTING ABORIGINAL MOTIF ON NGARABA-AAN TRAIL.

PHOTO OF GUN EMPLACEMENT AT THE NORTHERN END OF MM BEACH



LEGEND

- BOUNDARY
- EXISTING SHARED PATHWAY NETWORK
- NGARABA-AAN TRAIL APPRECIATING SCENIC BEAUTY & CELEBRATING ARBORIGINAL CULTURAL HERITAGE VALUES OF THE AREA
- POTENTIAL PUBLIC ART AND OR INTERPRETIVE SIGNAGE AS IDENTIFIED IN NGARABA-AAN TRAIL INTERPRETATION PLAN PREPARED BY TRAPNELL INTERPRETATION
- LOCATION OF HISTORIC FEATURES
- POTENTIAL WAY FINDING SIGNAGE AT KEY LOCATIONS
- POTENTIAL NODAL AREAS WITH THRESHOLD PAVEMENT
- POTENTIAL VIEWING AREA ON BOILERS POINT
- IMPROVEMENT TO EXISTING ROAD SURFACE
- EXISTING VEGETATION TO BE RETAINED & MAINTAINED AS IDENTIFIED BY VEGETATION MANAGEMENT PLAN PREPARED BY JENNIFER NEIL TREECREPER INDIGENOUS LAND MANAGEMENT
- EXISTING VEGETATION TO BE REHABILITATED AS IDENTIFIED BY VEGETATION MANAGEMENT PLAN PREPARED BY JENNIFER NEIL TREECREPER INDIGENOUS LAND MANAGEMENT
- EXISTING FROG HABITAT TO BE PROTECTED
- POTENTIAL TREE PLANTING WITH TREE GUARD & ART PANELS

INDICATIVE PLANT LIST FOR RESTORATION OF EXISTING VEGETATION AS RECOMMENDED IN VEGETATION MANAGEMENT PLAN PREPARED BY TREECREPER INDIGENOUS LAND MANAGEMENT

GRASSES	
<i>Impertea cylindrica var. major</i>	Blady Grass
<i>Isolepis nodosa</i>	Isolepis
<i>Themedia australis</i>	Kangaroo Grass
<i>Spinifex sericeus</i>	Spinifex
GROUNDCOVERS	
<i>Carpobrotus glaucescens</i>	Pigface
<i>Kennedia prostrata</i>	Running Post Man
<i>Hibbertia scandens</i>	Guinea flower
<i>Hardenbergia violacea</i>	Hardenbergia
<i>Commelina cyanea</i>	Scurvy Weed
SHRUBS	
<i>Correa alba var. alba</i>	White Correa
<i>Dianella congesta</i>	Flax Lilly
<i>Crinum pedunculatum</i>	Swamp Lilly
<i>Pelargonium australe</i>	Coast Geranium
<i>Lomandra longifolia</i>	Max Rush
<i>Westringia fruticosa</i>	Coast Westringia
<i>Einadia sp.</i>	Salt Bush
SMALL TREES	
<i>Acacia sophorae</i>	Coastal Wattle
<i>Banksia integrifolia</i>	Coast Banksia
<i>Leptospermum laevigatum</i>	Black she-oak
<i>Breynia oblongifolia</i>	Breynia

- 7 SIGNAGE & INTERPRETATION FOR EXISTING FAUNA**
 - ADDITIONAL INTERPRETIVE SIGNS TO DEFINE HABITAT POCKET OF THE GREEN AND GOLD BELL FROG.
- 8 THRESHOLD TREATMENT TO FISHERMANS BEACH AT ENTRY POINT TO SIGNIFICANT ABORIGINAL PLACE**
 - OPPORTUNITY FOR IMPROVEMENTS TO THE PEDESTRIAN AND VEHICLE ACCESS. IMPROVEMENTS TO THE EXISTING GATE TO ALLOW IMPROVED PEDESTRIAN ACCESS.
 - OPPORTUNITY FOR IMPROVEMENTS TO THE PAVEMENT TO MAKE A BETTER WALKING ENVIRONMENT.
- 9 SIGNAGE & INTERPRETATION FOR ABORIGINAL CULTURAL HERITAGE**
 - REFLECTION POINT ON THE NGARABA-AAN TRAIL ROUTE FISHING METHODS AT FISHERMANS BEACH BY ABORIGINAL PEOPLE
 - PROPOSED LOCATION FOR MARKER PLINTH AT START OF BOILER POINT TRAIL AS RECOMMENDED IN INTERPRETATION PLAN.
 - IMPLEMENT VEGETATION MANAGEMENT PLAN TO REDUCE WEED GROWTH & REHABILITATE EXISTING VEGETATION.
- 10 SIGNAGE & INTERPRETATION**
 - ADDITIONAL INTERPRETIVE SIGNS TO CONVEY THE HISTORY OF THE EXISTING DEFENCE STRUCTURES.
- 11 VIEWING AREA FOR KEY ABORIGINAL CULTURAL HERITAGE VANTAGE POINT**
 - VIEWING AREA WITH INTERPRETIVE STORY PLINTH AND CUT STEEL THEME PANELS RELATING TO FISHING BY ABORIGINAL PEOPLE AND THE YOUNG COLONY. PROPOSED LOCATION FOR MARKER PLINTH AS RECOMMENDED IN INTERPRETATION PLAN PREPARED BY TRAPNELL INTERPRETATION.
 - IMPLEMENT VEGETATION MANAGEMENT PLAN TO REDUCE WEED GROWTH & REHABILITATE EXISTING VEGETATION
- 12 SIGNAGE & INTERPRETATION FOR LOCATION OF THE ELECTRIC/ BEACH LIGHT**
 - ADDITIONAL INTERPRETIVE SIGNS TO CONVEY THE HISTORY OF THE EXISTING DEFENCE STRUCTURES.
- 13 FISHERMANS BEACH INTERPRETATION FOR ABORIGINAL CULTURAL HERITAGE**
 - PROPOSED LOCATION FOR LASER-CUT STEEL THEME PANEL WITH THE THEME OF FISHING METHODS OF THE ABORIGINAL COMMUNITY WHO LIVED AT FISHERMANS BEACH AS RECOMMENDED IN INTERPRETATION PLAN PREPARED BY TRAPNELL INTERPRETATION
 - POTENTIAL IMPROVEMENTS TO THE SURFACE TREATMENT OF THE EXISTING ROAD PAVEMENT
 - IMPROVE ACCESS FOR PEDESTRIANS DOWN EXISTING CONCRETE RAMP
- 14 ACCESS TO FISHERMAN BEACH**
 - MAINTAIN ACCESS FOR THE CURRENT USE OF THE AREA.

THEME K
Habitat pockets - the green and gold bell frog

- Survivors in a disturbed landscape
- A rare frog community - Green and Golden Bell Frog

LOCATION
Concrete Marker Plinths can be used at numerous locations.

MARKER PLINTH
Plinth to be placed adjacent feature

Interpretive photo-etched aluminium plate describes survival of this rare frog as small communities in pocket habitats, some of which are highly polluted.

NOTE: The etched aluminium plate is not required at all habitat pockets identified with a plinth

Design / Construction
Refer to: Plinth design and construction - concrete Part 10.1

THEME E
Aboriginal commerce - the fishing industry

- Coastal People - Traditional Aboriginal coastal food resources
- 1876 - Supplying fish to the young colony - Fishing boats acquired from the Governor in Sydney, whaleboats and the names of George Treble and William Suttler

THEME F
Fishing methods of the Aboriginal community who lived at Fishermans Beach:

- Coastal industry - Boats and nets - the method of fishing - Using HR 60 to eight milled schools.
- Coastal Community - Homes along the beach.

LOCATION 4
Along back to Boilers Point, overlooking Fishermans Beach community site

IMAGE OF CONCEPT DESIGN MARKER PLINTH AS PART OF THE NGARABA-AAN TRAIL INTERPRETATION PLAN DENOTED ON PLAN AS 7

IMAGE OF CONCEPT DESIGN FOR VIEWING AREA ON BOILERS POINT AS RECOMMENDED INTERPRETATION PLAN PREPARED. DENOTED ON PLAN AS 11

IMAGE OF CONCEPT DESIGN FOR LASER-CUT STEEL THEME PANEL COMMORATING ABORIGINAL CULTURAL HERITAGE (FISHING METHODS AT FISHERMAN'S BEACH) 13

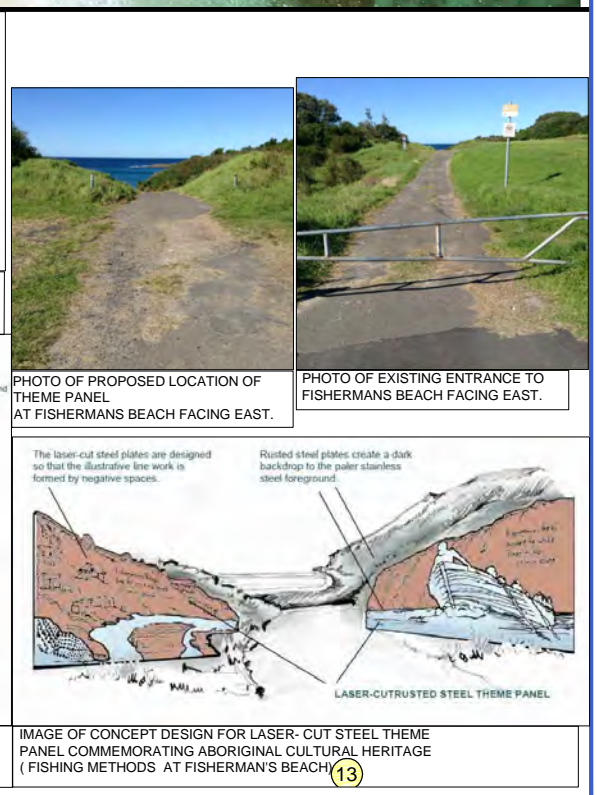




IMAGE OF CONCEPT DESIGN FOR MARKER PLINTH AT OBSERVATION AREA COMMEMORATING ABORIGINAL CULTURAL HERITAGE HILL 60 & FISHERMAN'S BEACH BECOME PLACES FOR DISPLACED ABORIGINAL COMMUNITIES

LEGEND

- BOUNDARY
- ON ROAD CYCLEWAY
- EXISTING SHARED PATHWAY NETWORK
- POTENTIAL NEW PATHWAY
- NGARABA-AAN TRAIL APPRECIATING SCENIC BEAUTY & CELEBRATING ARBORIGENAL CULTURAL HERITAGE VALUES OF THE AREA
- LOCATION OF EXISTING MILITARY TUNNELS & FORTIFICATIONS
- POTENTIAL NEW STAIR ACCESS LINKING TOP CAR PARK WITH THE LOWER CAR PARK
- POTENTIAL RAISED THRESHOLD PEDESTRIAN CROSSING TO PROVIDE SAFE PEDESTRIAN ACCESS
- POTENTIAL NEW BARRIER
- POTENTIAL PUBLIC ART AND OR INTERPRETIVE SIGNAGE AS IDENTIFIED IN NGARABA-AAN TRAIL INTERPRETATION PLAN PREPARED BY TRAPNELL INTERPRETATION
- POTENTIAL WAY FINDING SIGNAGE AT KEY LOCATIONS
- POTENTIAL NODAL AREAS WITH THRESHOLD PAVEMENT
- POTENTIAL LOCATION OF STREET FURNITURE EG. SEAT, BENCHES, PICNIC SETTING
- EXISTING VEGETATION TO BE REHABILITATED AS IDENTIFIED BY VEGETATION MANAGEMENT PLAN PREPARED BY JENNIFER NEIL TREECREPER INDIGENOUS LAND MANAGEMENT
- POTENTIAL TREE PLANTING WITH TREE GUARD & ART PANELS

- HILL 60**
HILL 60 RESERVE SHOULD BE CONSERVED AS A STATE SIGNIFICANT PROMINENT LANDMARK THAT CONTAINS SIGNIFICANT ABORIGINAL AND EUROPEAN HERITAGE, INCLUDING WORLD WAR TWO FORTIFICATIONS' DRAFT CONSERVATION MANAGEMENT PLAN PREPARED BY NICHE APRIL 2015
- 15 RADAR OPERATIONS CENTRE- OBSERVATION DECK**
 - EXTEND EXISTING POST AND RAIL FENCE TO CONTROL PEDESTRIAN ACCESS FROM THE LOOK OUT AREA AND HERITAGE ITEM REMAIN VISIBLE.
 - UNDERTAKE SELECTIVE PRUNING OF EXISTING VEGETATION TO ENSURE THAT THE SURROUNDING LANDSCAPE FEATURES AND HERITAGE ITEMS REMAIN VISIBLE.
 - GRAFFITI SHOULD BE REMOVED WITHOUT DAMAGING THE UNDERLYING SURFACE OR ORIGINAL FINISH. IF THE ORIGINAL SURFACE WAS PAINTED THEN PROMINENT GRAFFITI SHOULD BE PAINTED OVER WITH A SUITABLE PAINT.
 - 16 THRESHOLD TREATMENT TO RADAR OPERATION CENTRE**
 - REMOVE EXISTING STEEL VEHICLE BARRIER AT CAR PARK TO IMPROVE PEDESTRIAN ACCESS TO RADAR OPERATION CENTRE.
 - CONSIDER POTENTIAL IMPROVED PEDESTRIAN ACCESS TO RADAR OPERATION CENTRE /OBSERVATION DECK WHICH DOES NOT DETRACT FROM HERITAGE SIGNIFICANCE.
 - 17 CAR PARK IMPROVEMENTS**
 - REMOVE & REPLACE EXISTING TIMBER VEHICLE BARRIERS, AND REPLACE WITH NEW TIMBER BARRIER TO APPROVED DETAIL.
 - CREATE NEW PATHWAY TO IMPROVE PEDESTRIAN ACCESS.
 - SELECTIVE REMOVAL AND PRUNING OF VEGETATION TO CREATE A VISUAL CONNECTION WITH THE LOWER CAR PARK.
 - PROPOSED STAIRCASE AND LANDINGS TO CONNECT WITH LOWER CAR PARK.
 - PROVIDE ACCESSIBLE CAR PARKING SPACE
 - 18 IMPROVEMENT OF CONNECTIVITY BETWEEN TRAIL & CAR PARK**
 - PROPOSED TRAFFIC CALMING DEVICE TO PROVIDE SAFE PEDESTRIAN ACCESS FROM TRAIL TO CAR PARK.
 - SELECTIVE REMOVAL AND PRUNING OF EXISTING VEGETATION IN THIS AREA TO CREATE A VISUAL CONNECTION FROM CAR PARK TO TRAIL TO ALLOW SAFE PEDESTRIAN ACCESS.
 - NEW PEDESTRIAN PATH LINKING FROM MILITARY ROAD TO TRAIL AND TO THE TOP CAR PARK TO ENSURE PEDESTRIANS ARE NOT REQUIRED TO WALK ON STEEP ROAD.
 - 19 IMPROVEMENT TO PEDESTRIAN LINKAGES**
 - PROPOSED TRAFFIC CALMING DEVICE TO PROVIDE PEDESTRIAN ACCESS TO THE EXISTING TOILET BLOCK AND THE EXISTING CAR PARK.
 - 20 ENTRY SIGNAGE**
 - ENTRY SIGN TO CREATE A SENSE OF ARRIVAL TO THE SITE WHICH REFERENCES ABORIGINAL AND EUROPEAN HERITAGE.
 - WAY FINDING SIGNAGE FOR NGARABA-AAN TRAIL
 - 21 PEDESTRIAN PATHWAY ADJACENT TO EXISTING CAR PARKING**
 - PROPOSED PATHWAY LINKING FROM ENTRY ALONG THE FRONT OF THE EXISTING CAR PARK
 - ADDITIONAL SEATING AND PICNIC TABLES
 - 22 CONSOLIDATE FORMALISE PARKING AREAS**
 - CONSOLIDATE AND FORMALISE PARKING CREATED TO CONTROL INFORMAL PARKING TO CREATE MORE PASSIVE RECREATION OPPORTUNITIES.
 - SUBJECT TO FURTHER DETAILED ARCHAEOLOGICAL INVESTIGATIONS, GEO-TECHNICAL AND SOIL TESTING.
 - CREATE ADDITIONAL CAR AND BUS PARKING OPPORTUNITIES
 - 23 IMPROVEMENT TO VIEWING AREA**
 - REMOVE AND REPLACE EXISTING HANDRAIL AT VIEWING AREA
 - SELECTIVE VEGETATION REMOVAL AND PRUNING TO ENSURE THE SURROUNDING LANDSCAPE FEATURES AND HERITAGE ITEMS REMAIN VISIBLE
 - 24 CONNECTION TO MILITARY HERITAGE TUNNELS**
 - ADDITIONAL INTERPRETIVE SIGNS TO CONVEY THE HISTORY OF THE EXISTING TUNNELS.
 - NEW PEDESTRIAN PATH LINKING FROM CAR PARK TO ENTRY TO TUNNEL.
 - CLEANING OF THE INTERIOR OF THE TUNNELS, INCLUDING REPAINTING AND RUBBISH REMOVAL.
 - ACCESS USE OF THE MILITARY TUNNELS WILL BE INFORMED BY STRUCTURAL ENGINEER REPORTS AND WILL BE SUBJECT TO NECESSARY APPROVALS.
 - 25 ADDITIONAL INTERPRETIVE SIGNS**
 - THE HILL 60 RESERVE HAS A RICH IN HISTORY. INTERPRETATION OF THE RESERVE SHOULD HIGHLIGHT ITS HISTORICAL THEMES. MUCH OF THE EXISTING FABRIC CAN BE USED FOR INTERPRETATION INCLUDING THE MILITARY TUNNELS, RADAR OPERATION CENTRE /OBSERVATION DECK AND GUN EMPLACEMENT BUILDING
 - 26 POTENTIAL LOCATION FOR COFFEE/ FOOD VAN**
 - SUBJECT TO LICENCE WITH WOLLONGONG CITY COUNCIL
 - 27 POTENTIAL RELOCATED POSITION FOR AMENITIES**
 - POTENTIAL LOCATION OF AMENITIES WITH BETTER CONNECTIVITY WITH OPEN SPACE. SUBJECT TO FURTHER DETAILED ARCHAEOLOGICAL INVESTIGATIONS, GEO-TECHNICAL AND SOIL TESTING AND WILL BE SUBJECT TO REQUIRED APPROVALS.



PHOTO OF MILITARY TUNNELS EASTERN ENTRY

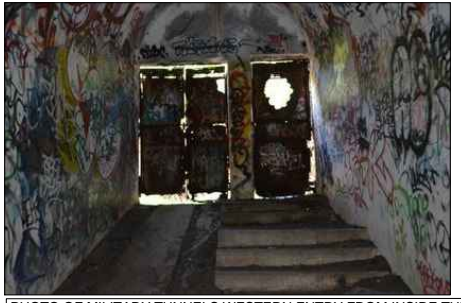


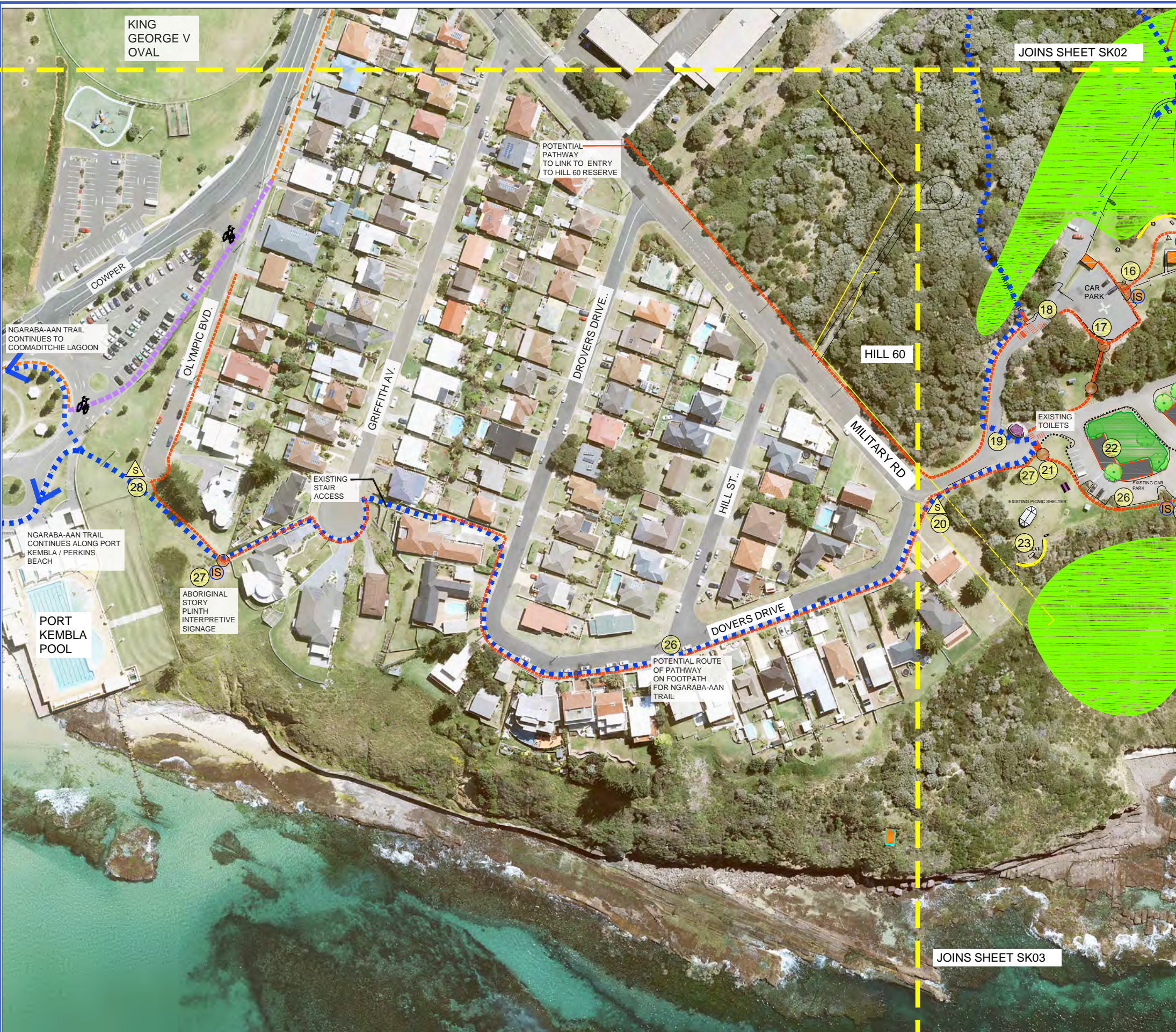
PHOTO OF MILITARY TUNNELS WESTERN ENTRY FROM INSIDE TUNNEL



PHOTO OF EXISTING PATH TO THE OBSERVATION DECK FROM THE TOP CAR PARK



PHOTO OF EXISTING CAR PARKING THAT COULD BE CONSOLIDATED TO CREATE MORE PASSIVE RECREATION OPPORTUNITIES



LEGEND

- BOUNDARY: Yellow dashed line
- ON ROAD CYCLEWAY: Purple dashed line with bicycle icon
- EXISTING SHARED PATHWAY NETWORK: Orange dashed line
- POTENTIAL NEW PATHWAY: Red dashed line
- NGARABA-AAN TRAIL: Blue dashed line
- POTENTIAL PUBLIC ART AND OR INTERPRETIVE SIGNAGE AS IDENTIFIED IN NGARABA-AAN TRAIL INTERPRETATION PLAN PREPARED BY TRAPNELL INTERPRETATION: IS icon
- POTENTIAL ENTRY SIGNAGE: S icon
- POTENTIAL NODAL AREAS WITH THRESHOLD PAVEMENT: Brown circle
- EXISTING VEGETATION TO BE REHABILITATED AS IDENTIFIED BY VEGETATION MANAGEMENT PLAN PREPARED BY JENNIFER NEIL TREECREEPER INDIGENOUS LAND MANAGEMENT: Green leaf icon
- POTENTIAL TREE PLANTING WITH TREE GUARD & ART PANELS: Green tree icon

- 26** NGARABA-AAN TRAIL CELEBRATING ABORIGINAL CULTURAL HERITAGE
POTENTIAL ROUTE OF PATHWAY FOR NGARABA-AAN TRAIL ON DOVERS DRIVE SUBJECT TO FURTHER DETAIL INVESTIGATIONS AND NECESSARY APPROVALS.
- 27** ADDITIONAL INTERPRETATION SIGNS FOR ABORIGINAL CULTURAL HERITAGE
REFLECTION POINT ON THE NGARABA-AAN TRAIL ROUTE. PROPOSED LOCATION FOR MARKER PLINTH OVER LOOKING PORT KEMBLA POOL AND PORT BEACH AS DEFINED INTERPRETATION PLAN PREPARED BY TRAPNELL INTERPRETATION.
THRESHOLD PAVEMENT TO CREATING VIEWING AREA
POTENTIAL LOCATION FOR SEAT/BENCH
- 28** DIRECTION SIGNS /WAY FINDING
POTENTIAL LOCATION FOR DIRECTIONAL SIGNAGE/WAY FINDING FOR THE NGARABA-AAN TRAIL

THEME N
A comparison of Proust's vision Lake Illawarra's coastal environment and the present.

- A loss of dune communities through sand mining (shipment of sand to Hawaii)
- Dumping of industrial waste – slag, leaching of toxic material
- Expanding suburban and commercial areas
- Present actions and plans to rectify the loss of habitat and protect local communities

LOCATION 12
Southern section of track along Hill 60 above swimming Pool and prior to residential area

STORY PLINTH
Proust's image drawn during early European settlement is used to focus on past, present and future activities that have and will affect coastal communities.

Refer to: Plinth design and construction – timber Part 10.2

IMAGE OF CONCEPT DESIGN FOR STORY PLINTH AS DEFINE INTERPRETATION PREPARED BY TRAPNELL INTERPRETATION. DENOTED ON PLAN **27**



PHOTO OF ENTRY TO HILL 60 FROM MILITARY ROAD POTENTIAL TO CREATE A SENSE OF ARRIVAL TO THE SITE. POTENTIAL SIGNAGE COULD REFERENCES ABORIGINAL AND EUROPEAN HERITAGE ALONG WITH WAY FINDING SIGNAGE FOR THE NGARABA-AAN TRAIL.

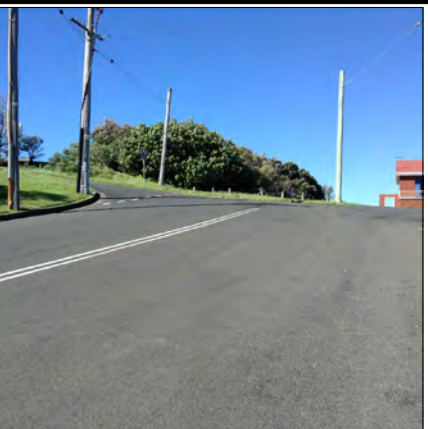


PHOTO OF ENTRY TO HILL 60 FROM MILITARY ROAD POTENTIAL TO CREATE A SENSE OF ARRIVAL TO THE SITE. POTENTIAL SIGNAGE COULD REFERENCES ABORIGINAL AND EUROPEAN HERITAGE ALONG WITH WAY FINDING SIGNAGE FOR THE NGARABA-AAN TRAIL.



PHOTO OF EXISTING STAIRS ON GRIFFITHS AV, ON THE NGARABA-AAN TRAIL ROUTE.