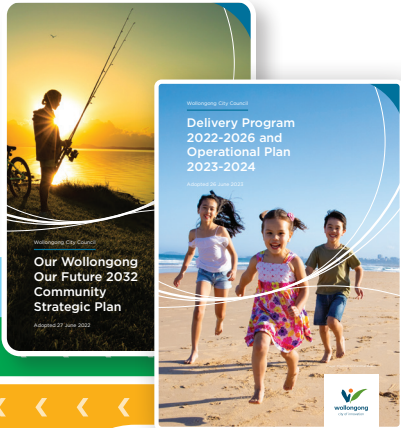


Supporting Document Roadmap

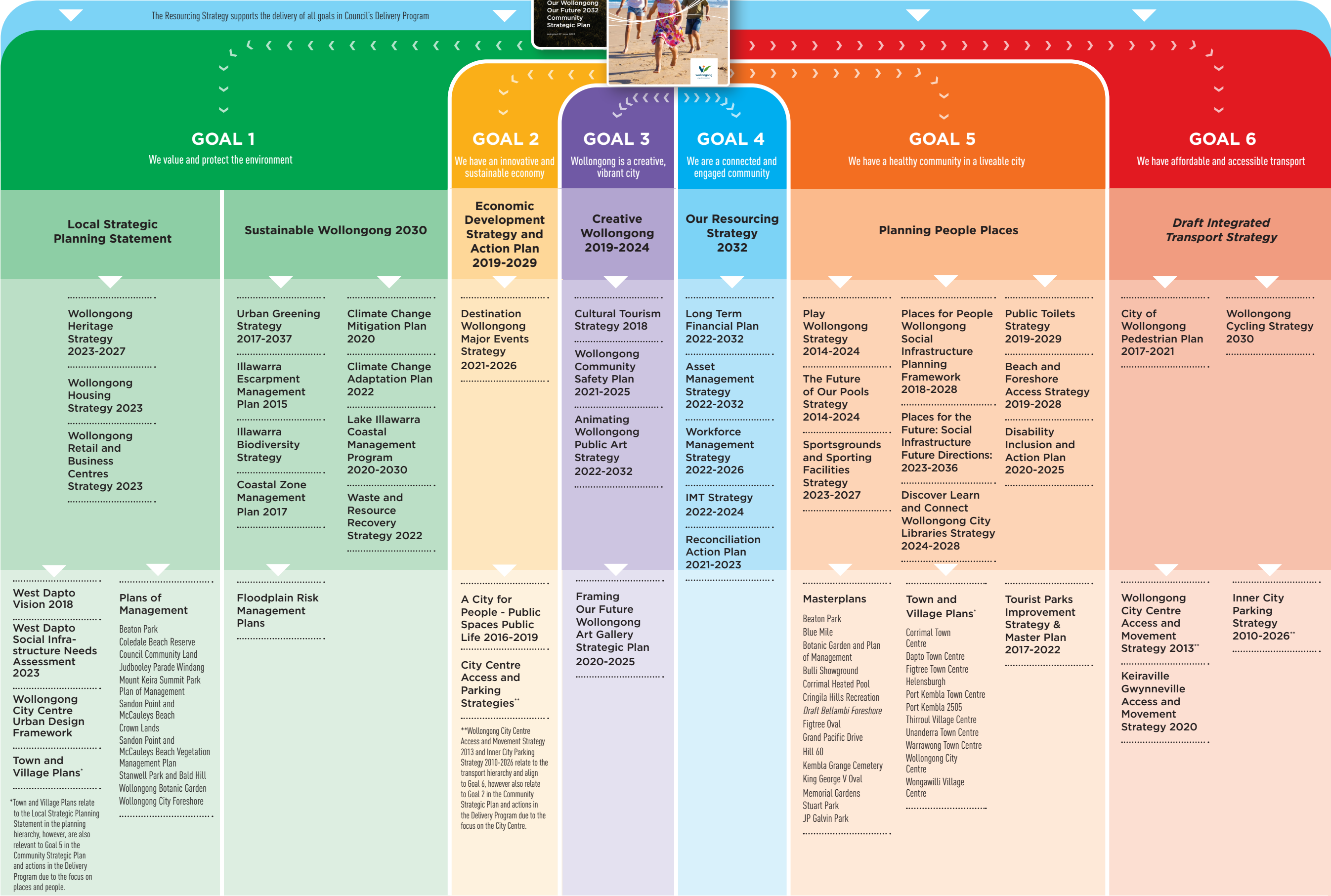
The following Supporting Documents have been endorsed by Council as draft or adopted by Council as final:



HIGH LEVEL STRATEGY

LOCAL GOVERNMENT AREA FOCUSED STRATEGIES

LOCATION SPECIFIC



*Town and Village Plans relate to the Local Strategic Planning Statement in the planning hierarchy, however, are also relevant to Goal 5 in the Community Strategic Plan and actions in the Delivery Program due to the focus on places and people.

**Wollongong City Centre Access and Movement Strategy 2013 and Inner City Parking Strategy 2010-2026 relate to the transport hierarchy and align to Goal 6, however also relate to Goal 2 in the Community Strategic Plan and actions in the Delivery Program due to the focus on the City Centre.