

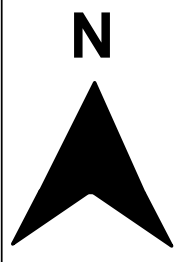
All line marking to be installed in accordance with Transport for NSW Delineation Guidelines
All signage to be installed in accordance with AS1742.2



Signage & Linemarking Plan
Holy Spirit Bellambi

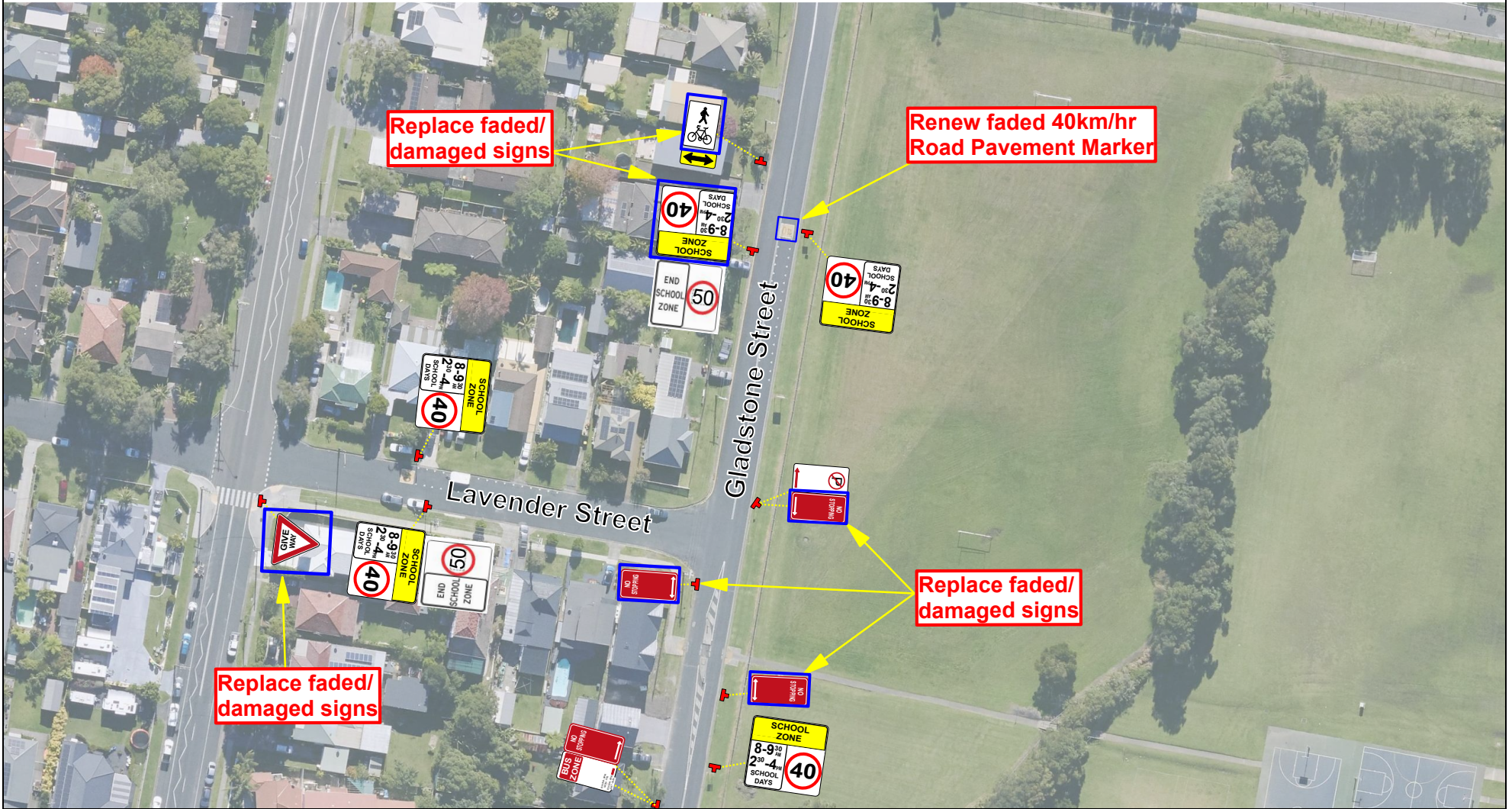
Legend

All signs and lines illustrated in the following pages are current as of the date shown on the plan. All signs and lines moving forward are to be designed in accordance with best practice guidelines of the time. All sign locations are approximates only.



Date	18/09/23	Street	Various		
Scale	1:500	Suburb	Bellambi		
Page	1 of 5	Drawn	RJA	Reviewed	NO

All line marking to be installed in accordance with Transport for NSW Delineation Guidelines
 All signage to be installed in accordance with AS1742.2

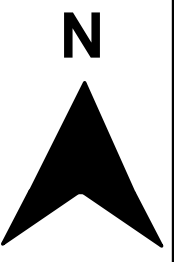


Sign & Line Plan
 Holy Spirit Bellambi

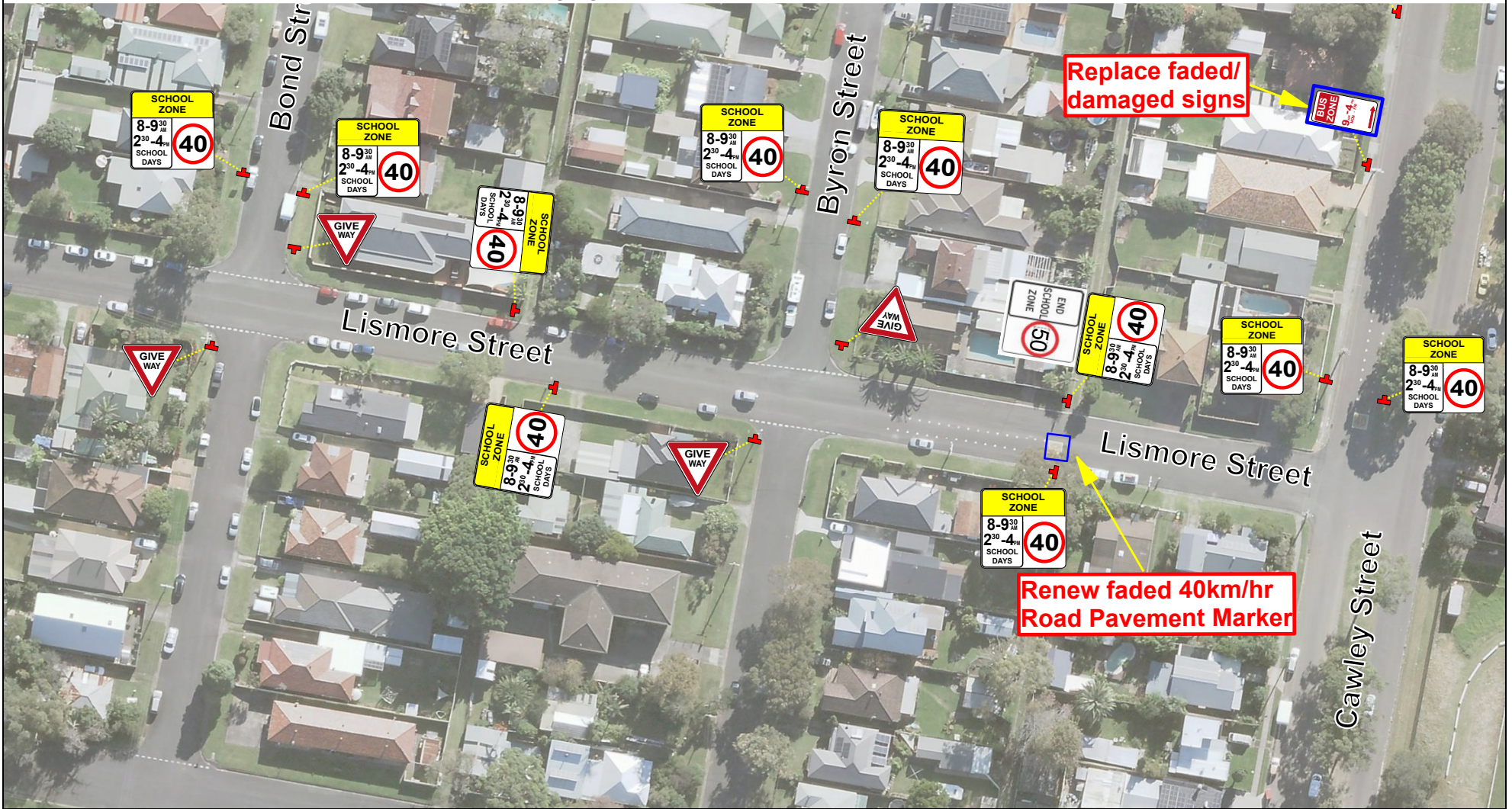
Date	18/09/23	Street	Gladstone Street		
Scale	1:500	Suburb	Bellambi		
Page	1 of 4	Drawn	RJA	Reviewed	NO

Legend

Existing Sign Pole
 W8 - 23A
 NO STOPPING (r5-400)(R)
 NO STOPPING (r5-400)(L & R)
 Bus Zone (r5-20)
 8:30AM - 6PM MON - FRI
 8:30AM - 6PM SAT - SUN
 8:00AM - 9:30AM
 2:30PM - 4:00PM
 SCHOOL DAYS
 No Parking R5 - 40 (L)
 Shared Path (r8-2) 300 x 400 mm
 Give-Way R1 - 2
 End School Zone (r4-231n) "50km/h"
 School Zone (r4-230n)
 8:00AM-9:30AM
 2:30PM-4:00PM
 SCHOOL DAYS



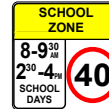
All line marking to be installed in accordance with Transport for NSW Delineation Guidelines
 All signage to be installed in accordance with AS1742.2



Sign & Line Plan
 Holy Spirit Bellambi

Legend

Existing Sign Pole



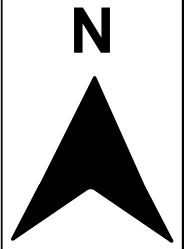
School Zone
 (r4-230n)
 8:00AM-9:30AM
 2:30PM-4:00PM
 SCHOOL DAYS



Give-Way
 R1 - 2

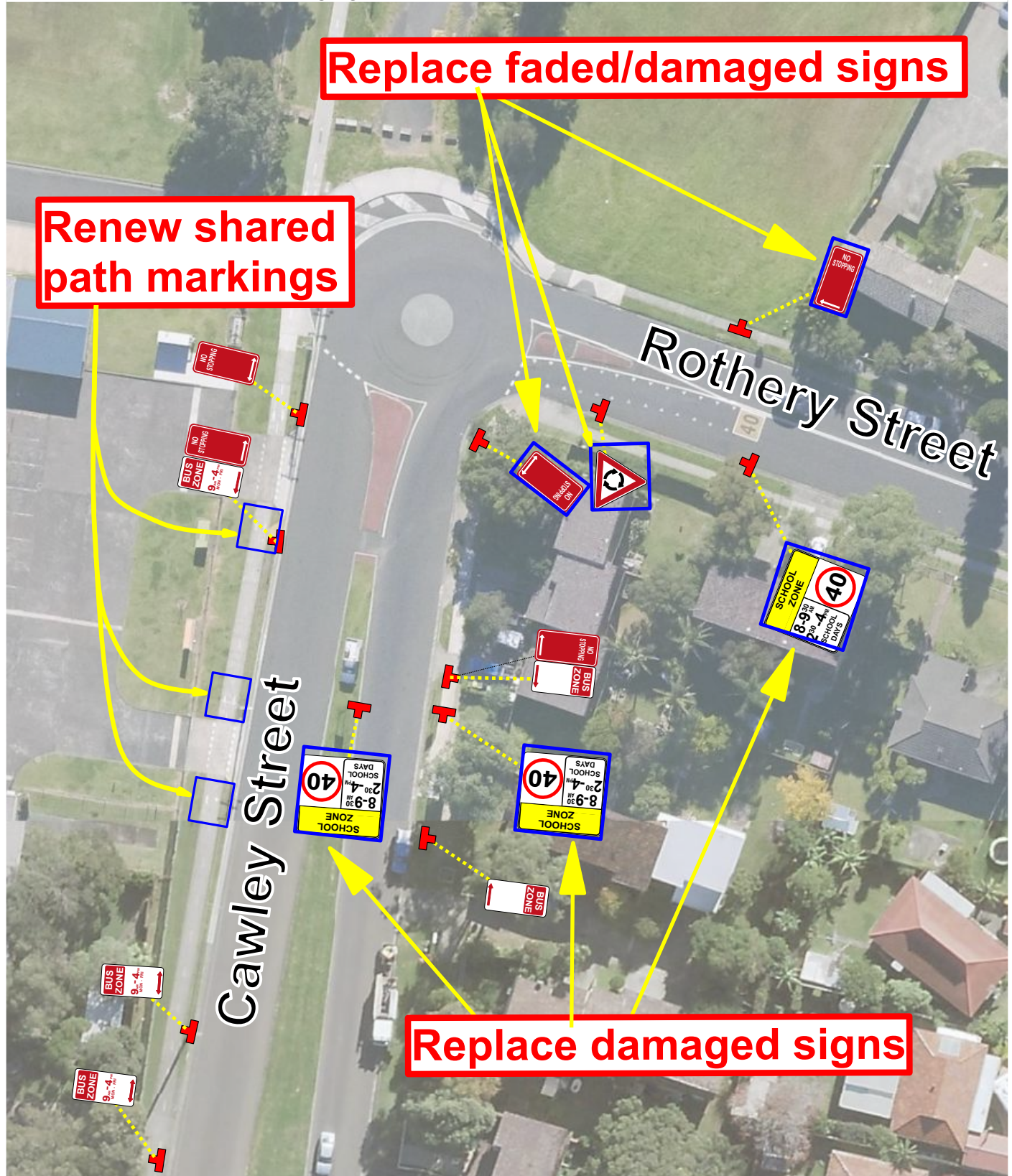


Bus Zone
 R5 - 20 - 1 (R)



Date	19/09/23	Street	Lismore Street		
Scale	1:500	Suburb	Bellambi		
Page	3 of 4	Drawn	RJA	Reviewed	NO

All line marking to be installed in accordance with Transport for NSW Delineation Guidelines
 All signage to be installed in accordance with AS1742.2



Sign & Line Plan
 Holy Spirit Bellambi

Date	18/09/23	Street	Cawley Street		
Scale	1:500	Suburb	Bellambi		
Page	4 of 4	Drawn	RJA	Reviewed	NO

Legend

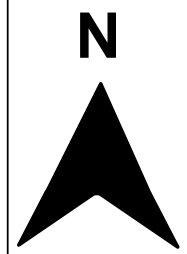
Existing Pole

No Stopping (r5-400)

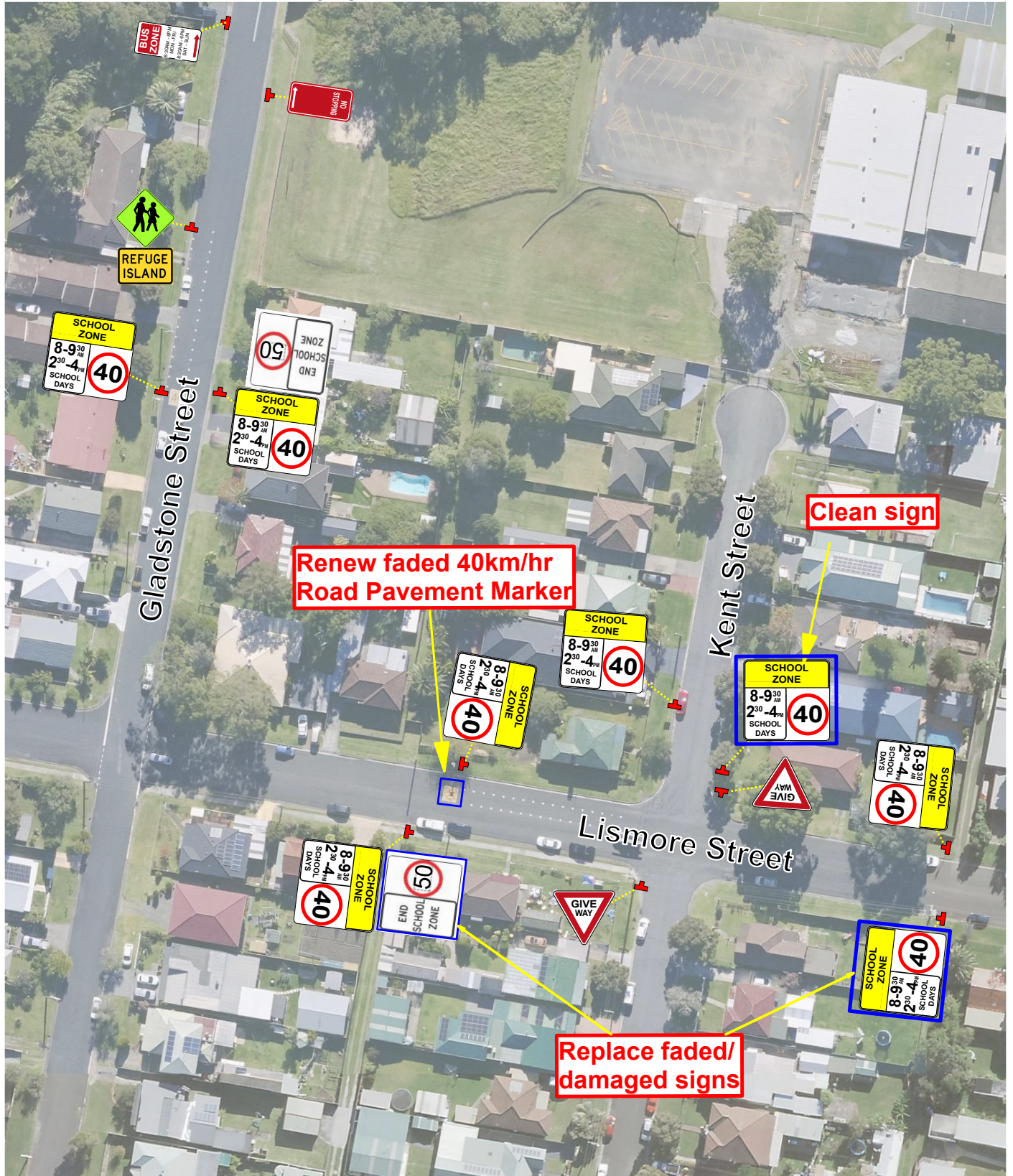
Bus Zone R5 - 20 - 1 (L,R & Timed)

SCHOOL ZONE
 8-9³⁰
 2³⁰-4⁰⁰
 SCHOOL DAYS
 40

School Zone (r4-230n)
 8:00AM-9:30AM
 2:30PM-4:00PM
 SCHOOL DAYS



All line marking to be installed in accordance with Transport for NSW Delineation Guidelines
 All signage to be installed in accordance with AS1742.2



Sign & Line Plan
 Holy Spirit Bellambi

Date	18/09/23	Street	Lismore Street		
Scale	1:500	Suburb	Bellambi		
Page	2 of 4	Drawn	RJA	Reviewed	NO

Legend

Children Crossing (w6-3)	No Stopping (r5-400)(L)	Bus Zone (r5-20) 8:00AM - 9:30AM 2:30PM - 4:00PM SCHOOL DAYS	End School Zone (r4-231n) "50km/h"	Refuge Island (w6-25) School Zone (r4-230n) 8:00AM-9:30AM 2:30PM-4:00PM SCHOOL DAYS

