

ITEM 14

TENDER T19/28 - SPORTSFIELD LIGHTING INSTALLATION TO HARRY GRAHAM PARK, FIGTREE, FIGTREE OVAL NO. 2, FIGTREE AND ELIZABETH PARK, BELLAMBI

This report recommends acceptance of a tender for sports field lighting installations at three sites (3) within the city in accordance with the requirements of the Local Government Act 1993 and the Local Government (General) Regulation 2005.

Council has 43 locations (67 fields in total) in the City where sport field lighting has been installed to cater for the increased sporting demands of the community. The proposed works will facilitate the installation of LED sports field lighting at Harry Graham Park, Figtree, Figtree Oval No.2, Figtree and Elizabeth Park, Bellambi to meet the increasing demands of football (soccer) within the city.

## RECOMMENDATION

- 1 In accordance with clause 178(1)(a) of the Local Government (General) Regulation 2005, Council accept the tender of Central West Electrical Contractors Pty Ltd for lighting installation to Harry Graham Park, Figtree, Figtree Oval No. 2, Figtree and Elizabeth Park, Bellambi, in the sum of \$911,390.00, excluding GST.
- 2 Council delegate to the General Manager the authority to finalise and execute the contract and any other documentation required to give effect to this resolution.
- 3 Council grant authority for the use of the Common Seal of Council on the contract and any other documentation, should it be required, to give effect to this resolution.

## REPORT AUTHORISATIONS

Report of: Glenn Whittaker, Manager Project Delivery  
Authorised by: Andrew Carfield, Director Infrastructure + Works

## ATTACHMENTS

- 1 Location Plans

## BACKGROUND

Council's Sports Ground and Sporting Facilities Strategy (2017-2021) identifies 'lighting at sports grounds' as one of the most significant assets that require upgrading to meet the increasing demand and use from existing sporting clubs. Installing new lighting at existing sports grounds provides greater opportunities for sporting clubs to train and play at night and encourage greater participation in community sporting events. New lighting increases the standard of existing facilities and allows a significant increase in the number of games that can be played during the football season.

Utilising the Council's Sports Ground and Sporting Facilities Strategy recommendation, the installation of sports field lighting at Harry Graham Park, Figtree and Figtree Oval No. 2, Figtree was prioritised to meet the demands of football in the southern suburbs.

Council had originally programmed for the upgrading of lighting at Elizabeth Park sports field at Bellambi during the 2020/21 financial year. Early in 2019, Bellambi Football Club, who lease Elizabeth Park sports field at Bellambi applied for and were successful in obtaining a NSW Government Community Building Partnerships (CBP) Grant to the value of \$65,000. During the tender process Bellambi Football Club advised Council they had received advice from the NSW Government stating that all CBP 2018 grant projects must be completed by 31 March 2020. To ensure Council can meet the grant funding milestones and maximise economic advantage of collective tendering, Council during the tender period, issued an addendum that included a \$300,000 Provisional Sum, for the sports field lighting installation to Elizabeth Park, Bellambi. This will allow Council to place orders for the lights and poles which have a substantial delivery time while finalising the geotechnical investigation at the Bellambi site.

Tenders were invited for this project by the open tender method with a close of tenders of 10.00 am on 17 September 2019.

Four (4) tenders were received by the close of tenders and all tenders have been scrutinised and assessed by a Tender Assessment Panel constituted in accordance with Council's Procurement Policies and Procedures and comprising representatives of the Project Delivery, City Works, Property and Recreation, Finance and Governance + Customer Service Divisions.

The Tender Assessment Panel assessed all tenders in accordance with the following assessment criteria and weightings as set out in the formal tender documents:

### **Mandatory Criteria**

- 1 Satisfactory references from referees for previous projects of similar size and scope
- 2 Financial assessment acceptable to Council which demonstrates the tenderer's financial capacity to undertake the works

### **Assessable Criteria and Weightings**

- 1 Cost to Council – 45%
- 2 Appreciation of scope of works and construction methodology – 15%
- 3 Experience and satisfactory performance in undertaking projects of similar size, scope and risk profile – 10%
- 4 Staff Qualifications and experience – 5 %
- 5 Proposed Subcontractors – 5%
- 6 Project Schedule – 5%
- 7 Demonstrated strengthening of local economic capacity – 5%
- 8 Workplace Health and Safety Management System – 5%
- 9 Environmental management policies and procedures – 5%

The mandatory assessment criteria have been met by the recommended tenderer.

The Tender Assessment Panel utilised a weighted scoring method for the assessment of tenders which allocates a numerical score out of 5 in relation to the level of compliance offered by the tenders to each of the assessment criteria as specified in the tender documentation. The method then takes into account pre-determined weightings for each of the assessment criteria which provides for a total score out of 5 to be calculated for each tender. The tender with the highest total score is considered to be the tender that best meets the requirements of the tender documentation in providing best value to Council. Table 1 below summarises the results of the tender assessment and the ranking of tenders.

TABLE 1 – SUMMARY OF TENDER ASSESSMENT

<b>Name of Tenderer</b>	<b>Ranking</b>
Central West Electrical Contractors Pty Ltd	1
ARA Electrical high Voltage Pty Ltd T/A Transelect	2
Havencord Pty Ltd T/A Floodlighting Australia	3
ETE Services Pty Ltd	NON-CONFORMING

### **PROPOSAL**

Council should authorise the engagement of Central West Electrical Contractors Pty Ltd to carry out the works in accordance with the scope of works and technical specifications developed for the project.

The recommended tenderer has satisfied the Tender Assessment Panel that it is capable of undertaking the works to Council's standards and in accordance with the technical specification.

An acceptable financial capability assessment has been received in relation to the recommended tenderer.

Referees nominated by the recommended tenderer have been contacted by the Tender Assessment Panel and expressed satisfaction with the standard of work and methods of operation undertaken on their behalf.

### CONSULTATION AND COMMUNICATION

- 1 Members of the Tender Assessment Panel
- 2 Nominated Referees
- 3 External Consultants – Paul Anthony Electrical

### PLANNING AND POLICY IMPACT

This report contributes to the delivery of Our Wollongong 2028 goal 4 "We are a connected and engaged community". It specifically delivers on core business activities as detailed in the Asset Management Plans Service Plan 2019-20.

### RISK ASSESSMENT

The risk in accepting the recommendation of this report is considered low on the basis that the tender process has fully complied with Council's Procurement Policies and Procedures and the Local Government Act 1993.

The risk of the project works or services is considered low based upon Council's risk assessment matrix and appropriate risk management strategies will be implemented.

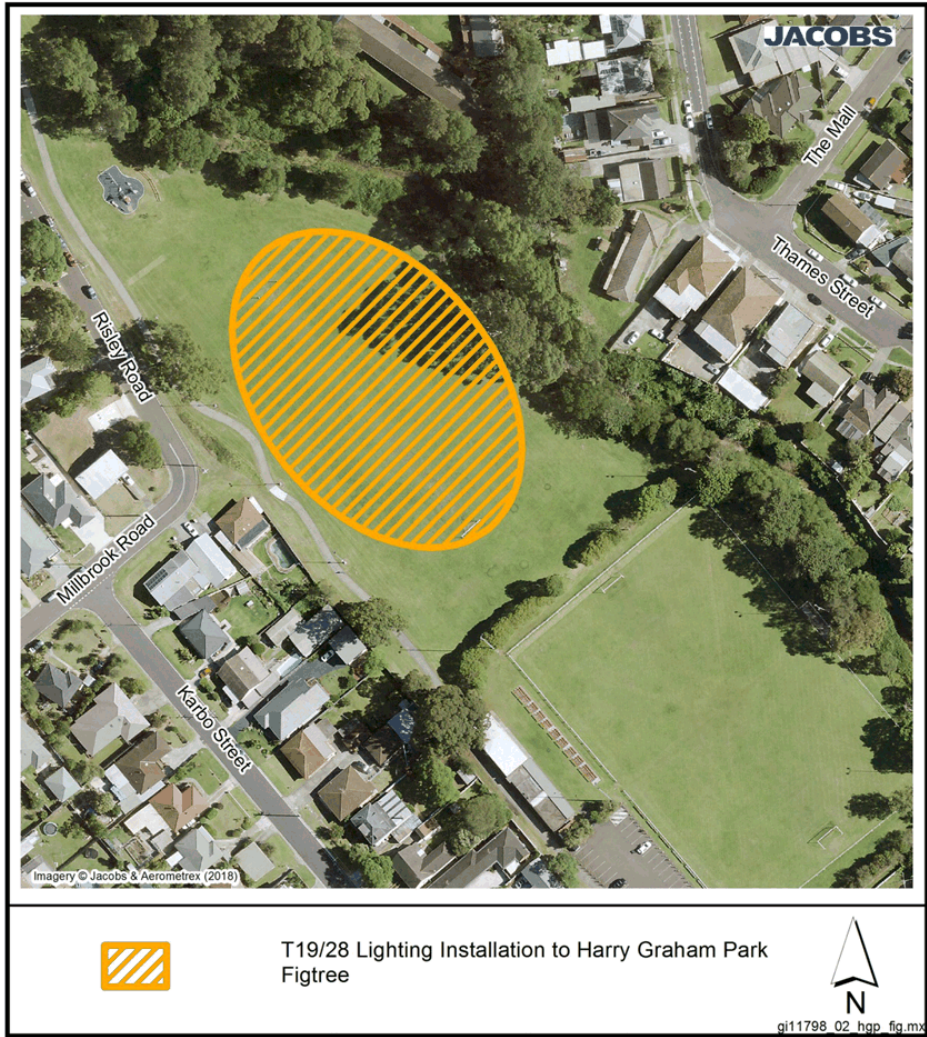
### FINANCIAL IMPLICATIONS

It is proposed that the total project be funded from the following source/s as identified in the Annual Plan –

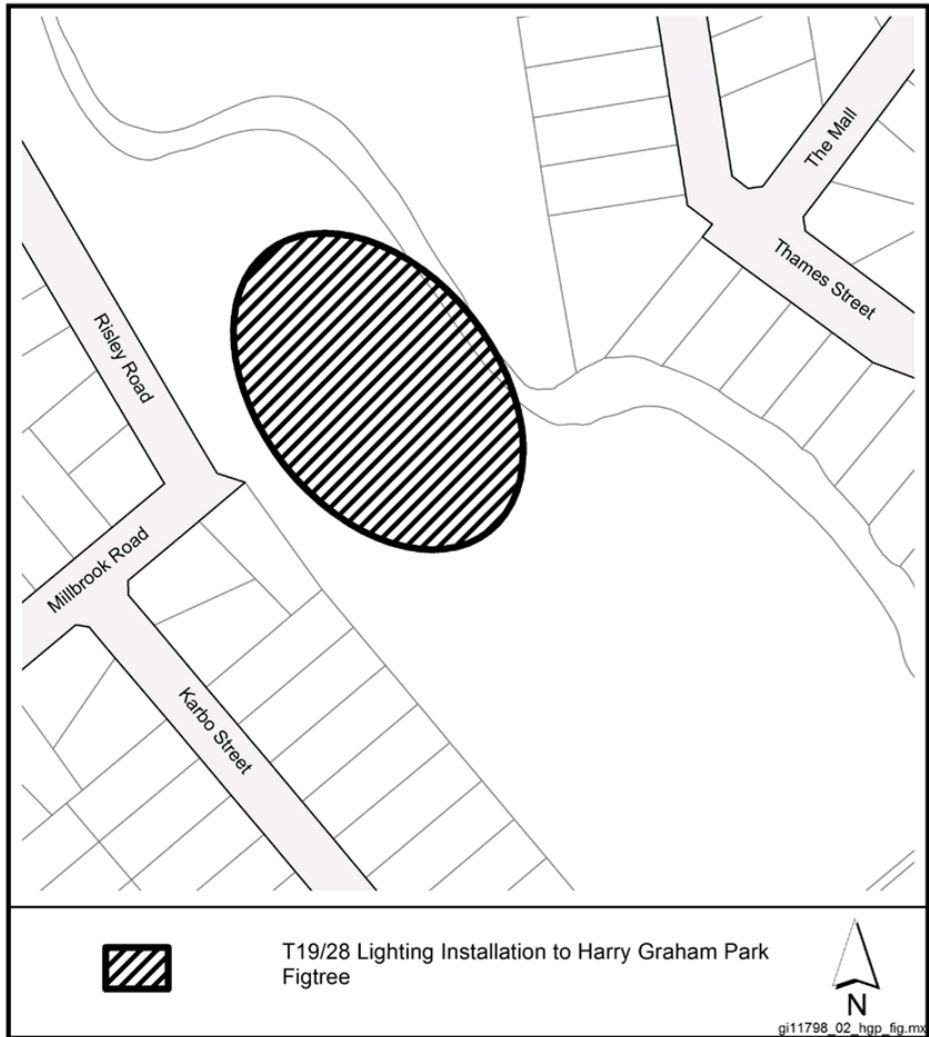
2019/20 Capital Budget

### CONCLUSION

The recommended tenderer has submitted an acceptable tender for this project and Council should endorse the recommendations of this report.

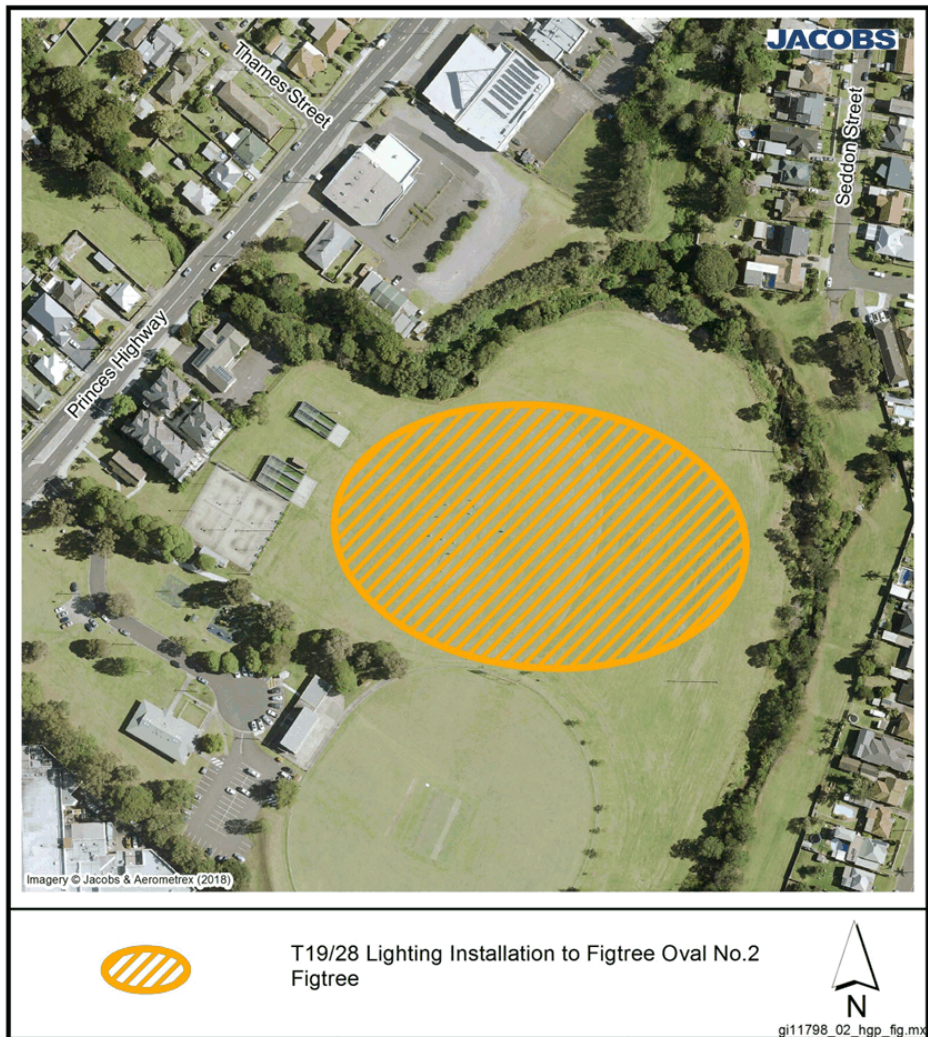


While every effort has been made to ensure the highest possible quality of data, no liability will be accepted for any inaccuracy of the information shown.  
Copyright © Wollongong City Council, Mapping Services Section. This map may not be reproduced in any form whatever without the express written permission of Wollongong City Council.

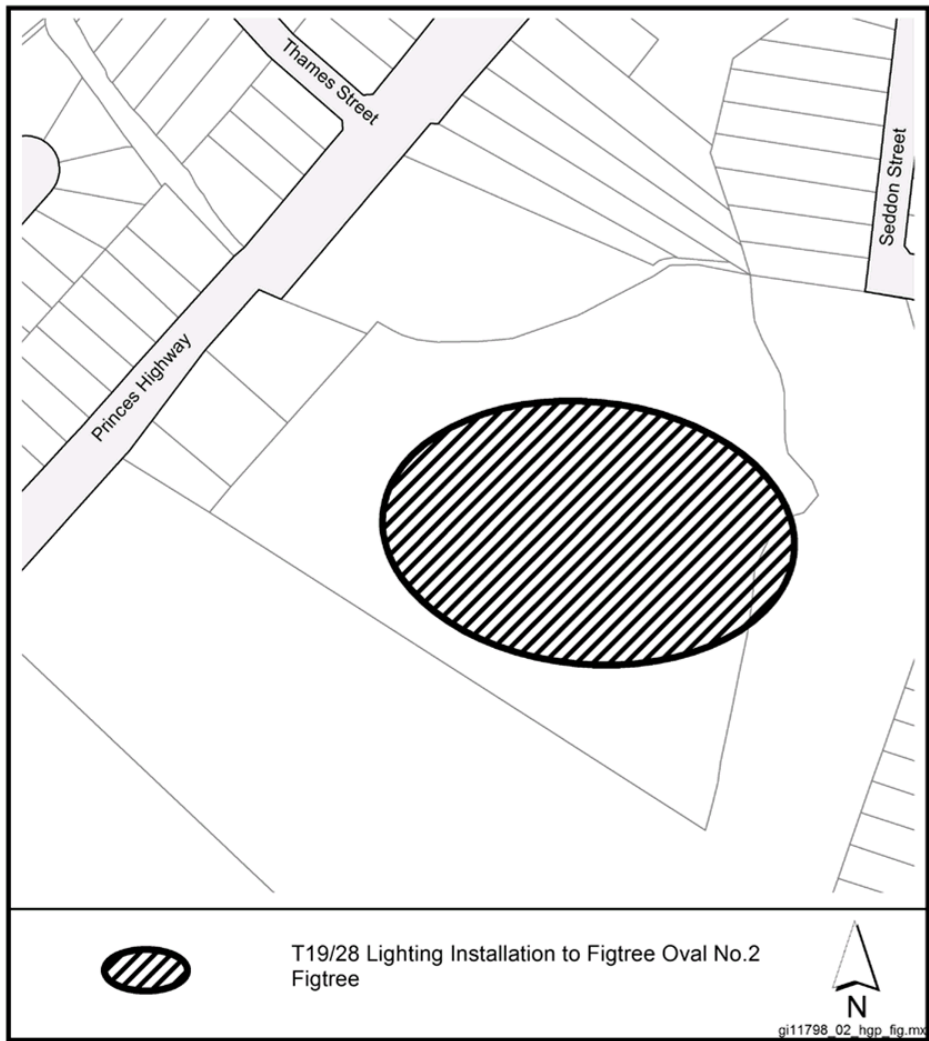


While every effort has been made to ensure the highest possible quality of data, no liability will be accepted for any inaccuracy of the information shown.  
Copyright © Wollongong City Council, Mapping Services Section. This map may not be reproduced in any form whatever without the express written permission of Wollongong City Council.

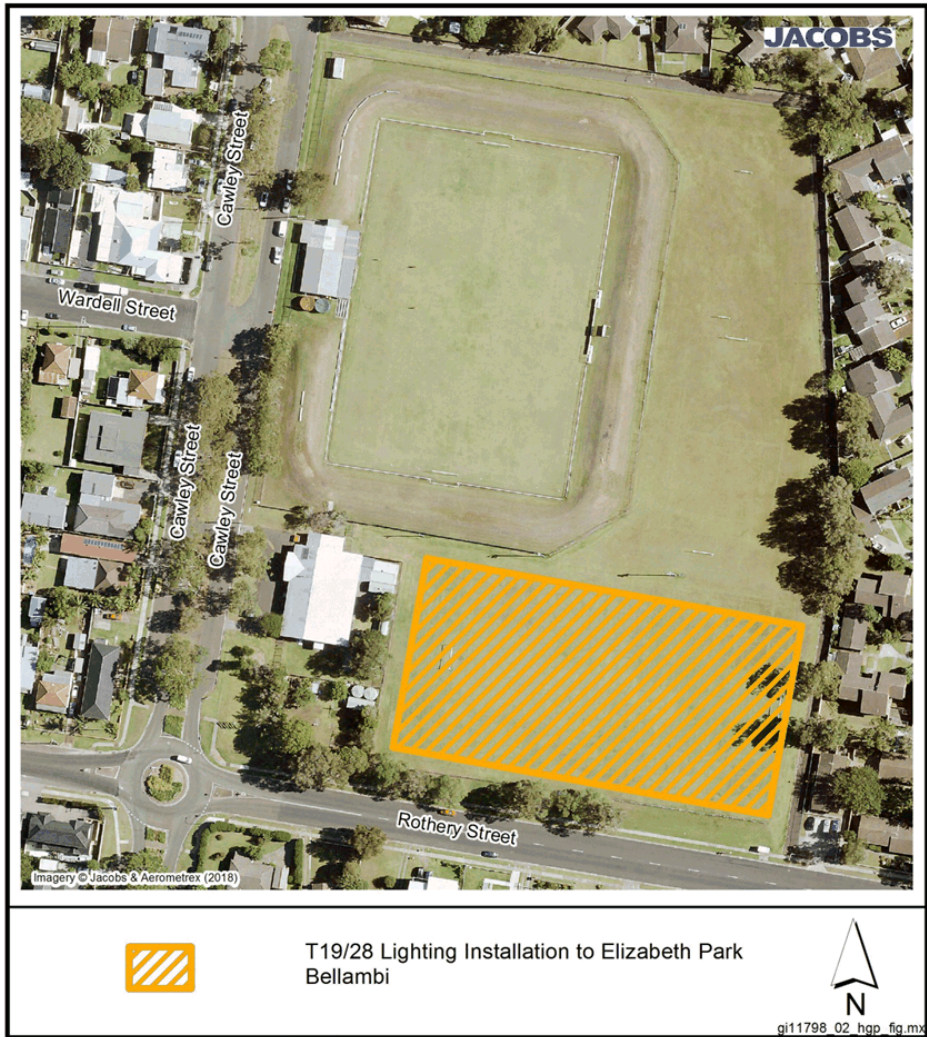




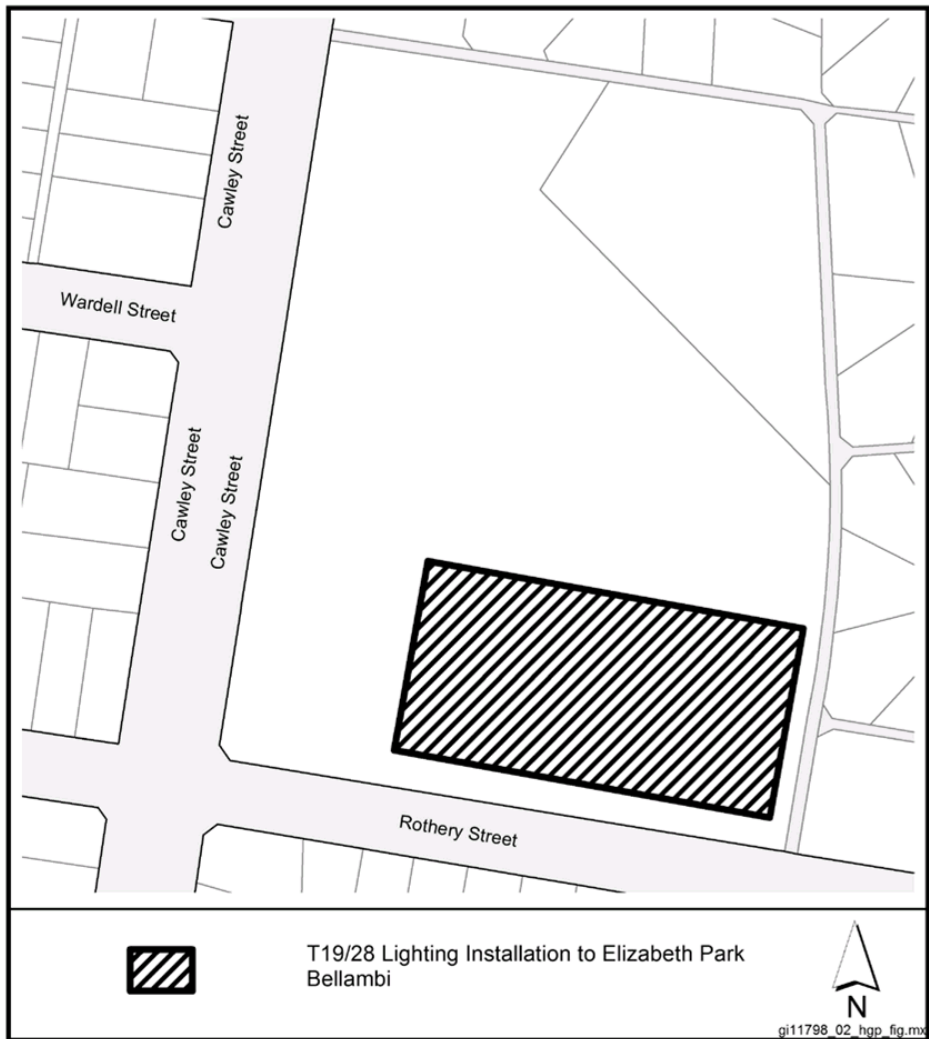
While every effort has been made to ensure the highest possible quality of data, no liability will be accepted for any inaccuracy of the information shown.  
Copyright © Wollongong City Council, Mapping Services Section. This map may not be reproduced in any form whatever without the express written permission of Wollongong City Council.



While every effort has been made to ensure the highest possible quality of data, no liability will be accepted for any inaccuracy of the information shown.  
Copyright © Wollongong City Council, Mapping Services Section. This map may not be reproduced in any form whatever without the express written permission of Wollongong City Council.







While every effort has been made to ensure the highest possible quality of data, no liability will be accepted for any inaccuracy of the information shown.  
Copyright © Wollongong City Council, Mapping Services Section. This map may not be reproduced in any form whatever without the express written permission of Wollongong City Council.