

ITEM 1 PUBLIC EXHIBITION - DRAFT KING GEORGE V PARK RECREATION MASTER PLAN

In accordance with the Delivery Program 2018-2022, Operational Plan 2020-21 and Port Kembla 2505 Revitalisation Plan 2018-2043, a draft Master Plan has been developed to provide Council with a vision to inform the future enhancement of King George V Park, Port Kembla.

The draft King George V Park Recreation Master Plan (draft Master Plan) focuses on improving community access, engagement and increased usage within the park and proposes a range of improvements to meet these objectives. Key features of the draft Master Plan include an expanded play precinct, new sport amenities, improved hardcourt facilities, new path networks and skate boarding opportunities.

Public exhibition of the draft King George V Park Recreation Master Plan will allow the community to provide further insight and input into the refinement of the plan. This report seeks Council's endorsement of the draft Master Plan for exhibition and for a subsequent report with findings from engagement be presented to Council on completion.

RECOMMENDATION

- 1 Council endorse the draft King George V Park Recreation Master Plan for public exhibition from 5 February to 5 March 2021.
- 2 Following exhibition, Council receive a further report with an updated Master Plan incorporating the community engagement findings.

REPORT AUTHORISATIONS

Report of: Lucielle Power, Manager Property + Recreation
Authorised by: Sue Savage, Director Community Services - Creative and Innovative City (Acting)

ATTACHMENTS

- 1 Draft King George V Park Recreation Master Plan
- 2 King George V Park Master Plan Engagement Report Phase 1

BACKGROUND

King George V Park is an iconic parcel of active and passive open space in Port Kembla.

In 2018, the *Port Kembla 2505 Revitalisation Plan 2018-2043* was produced to provide a '25-year aspirational vision for the future of Port Kembla'. The associated Implementation Plan identified the need to deliver a Master Plan for the King George V Precinct.

The lower portion of the park hosts a range of recreation activities including senior cricket ground, cricket training nets, football field, junior cricket ground, local playground, and two hard courts. The sports field park has recently undergone flood lighting, turf wicket and irrigation improvements, making it a popular training and competition facility for cricket and football players.

The Port Kembla Cricket clubhouse is situated in the centre of the park on the western side of the cricket field. The modest building was constructed in the 1960's, is ageing and does not provide contemporary gender equity or accessibility facilities. The park also provides limited storage space for sports and Council's ground maintenance equipment.

The existing playground is well utilised but primarily caters for younger children in the 2-8 year age group. The playground is supported by carparking but lacks supporting amenities such as shade, picnic facilities, water refill stations and bike racks.

Public toilet facilities are currently incorporated into the clubhouse building, although there are currently no formal pathways to the amenities, with access from the playground, basketball court and carparks via informal grass tracks.

The upper portion of the park is a large grassed area and without designated paths or infrastructure. Large sections of this area are affected by a relatively steep topography and open to prevailing winds and is known to be used occasionally for recreational paragliding activities. The south west portion provides sweeping views over Port Kembla Beach and broader residential area to the east. This area does contain an off-leash dog area and is relatively popular with locals for this purpose. This section of the site also has several informal walking tracks, which are used to access the playground, pool and beach.

Over the past decade a local bushcare group have worked in partnership with Council to pursue native bush and tree plantings at the base of the hill.

King George V Park sits central within a tapestry of significant sites including Coomaditchie Lagoon, Hill 60 and Fishermans and Port Kembla beaches. This presents an opportunity to 'connect with country' and engaging with the local Aboriginal community in design of infrastructure and vegetation management.

Given the diverse range of recreation pursuits and community groups who actively use the King George V Park, community consultation is key in developing a clear understanding of the possible uses for the site, its constraints and options for best meeting identified needs. As such, the process of community engagement and the preliminary engagement findings have formed the basis of the draft Master Plan.

PROPOSAL

The draft King George V Park Recreation Master Plan focuses on enhancing existing recreational opportunities and improving community access, engagement and usage of the popular park and surrounds.

Key aspects of the draft King George V Park Recreation Master Plan include:

- **New and relocated multi-purpose sporting amenities and formalisation of the carpark**

A contemporary and larger facility servicing the growth in sports, relocated between the senior cricket oval and football field providing dual access to both codes. The new facility will incorporate new gender equitable changerooms, canteen, clubroom and storage for both cricket and football use.

This facility will also incorporate new compliant public toilets servicing all park patrons.

It is also proposed that the existing carpark will be formalised (including asphalt, line marking, trees etc) providing improved car parking and access to the relocated amenities building.
- **Expanded and improved play precinct targeting a broad age range**

Given the lack of facilities in the park for older children, the draft Master Plan proposes an expansion of the playground, to provide additional play opportunities which cater for a broader range of ages. The expansion aims to harness the topography of the adjacent hill, incorporating adventure and nature play opportunities eg large slides down the embankment.
- **New picnic facilities – including shelters, seating and barbeques**

Amenity and usability of the park will be improved through the integration of additional facilities, particularly in the areas surrounding the playground and basketball court. This includes the addition of new picnic facilities, as well as bike racks, additional tree planting and water refill stations.
- **Development of a new skate facility**

The draft Master Plan proposes a new skate facility which will be configured in a linear configuration, between the existing playground and senior cricket oval. The facility will incorporate multiple skateable elements creating additional opportunities for young people and families.

- Outdoor fitness equipment

Multiple outdoor fitness equipment stations will be introduced around the outside of the cricket field. These exercise stations will support a broad range of community members and promote physical activity within the park. The new facilities will complement existing outdoor exercise equipment at MM beach, by providing a mixture of different static and dynamic equipment.

- Development of a contemporary art trail and viewing area

The draft Master Plan incorporates contemporary art installations, interpretive signage, pathways, seating and a viewing area. The proposed art walk has largely been designed to be wheelchair accessible and will lead to a viewing area which incorporates public art. The dog off-leash area will be maintained but re-sited north of the current area to help minimise potential conflict.

- New formal path networks incorporating accessible pathways

To improve community access and engagement with the space, the draft Master Plan proposes new formal path networks throughout the park. The proposed path networks will incorporate accessible pathways, linking different areas of the precinct.

- Upgrade existing hard court to multi-sports area with fencing

Since re-sealing the basketball court at the northern end of the park, community use of the hard courts has significantly increased. Taking into consideration this increased demand, the draft Master Plan proposes a multi-use court to be established next to the existing basketball court. Both courts will be fenced with potential for community artwork to be placed on fencing.

- Improved amenity, access and connectivity for pedestrians and vehicles on Cowper Street and Military Road

- Improvements to Port Kembla pool forecourt and carpark

Port Kembla pool and beach are popular swimming locations, which are frequented by both locals and visitors. The draft Master Plan reimagines the configuration of the pool carpark and forecourt area, to better cater to residents and visitors, reduce conflict between pedestrians and cars, provide additional picnic and barbeque facilities and improve disability access.

CONSULTATION AND COMMUNICATION

To help assist in clarifying aspirations for the site, significant engagement has already occurred and has directly informed the development of the draft Master Plan. The preliminary engagement phase ran from 13 October to 2 November 2020 where community members were invited to share their ideas about King George V Park; how they use it and how it can be improved as a sporting, social and green space. The community were informed about the project through:

- Mailout to all households, owners and businesses within 400m of the site
- Multiple notices in the Illawarra Mercury throughout October
- Media release on Council's website
- Development of a short video explaining the project and encouraging people to have their say
- Facebook post on 13 October 2020
- Emails promoting the exhibition were sent to key stakeholders including Neighbourhood Forum 7, local sporting clubs utilising King George V Park, and stakeholders who had previously contributed to the Port Kembla Revitalisation Plan with the invitation to share through their networks
- Posters were displayed at Warrawong and Wollongong libraries and some Wentworth Street, Port Kembla businesses
- Posters was emailed to local schools for inclusion in their newsletters

- Five signs promoting the engagement were placed around the park
- Invitation for the community to attend booked, COVID-safe, information sessions

Feedback was invited through an online survey, an interactive mapping tool, face-to-face meetings, online Zoom sessions and via the information sessions.

Feedback was received from a wide range of community members, of these people, 74 submitted online surveys, 32 people attended the information sessions and 35 people placed 160 pins on the interactive mapping tool. Community Engagement findings were collated in an Engagement Report, which has directly informed the draft Master Plan. An overview of the community feedback is as follows:

- Culture and history
- Amenities and connections
- Greening and shade
- Sport and recreation
- Children, young people and families
- Improving safety.

The full Engagement Report is attached to this report – refer Attachment 2.

In addition to the above, a key initiative and a first for a Council project was the undertaking of a Walk on Country with Mr Paul Knight CEO, Illawarra Local Aboriginal Lands Council (ILALC) and Council staff. Mr Knight shared his knowledge and helped to explain the significance of the area and connection to Country for the local Aboriginal community. The connection to Hill 60, beach and foreshore and Coomaditchie was highlighted, as was the role of the area for gathering food and materials supporting life and culture.

It is anticipated that the local Aboriginal community will play a key role in contributing to the detailed design and delivery of future upgraded and new facilities in the park as identified in the draft Master Plan. This will help residents and visitors gain a deeper understanding of local Aboriginal history and culture, ensuring it is a visible part of the built and natural environment.

Moving forward, should Council resolve to support the public exhibition of the draft King George V Recreation Master Plan, additional community engagement is planned to run from 5 February to 5 March 2021 seeking feedback on draft plans. The following means of promoting the draft Master Plan will involve:

- Notices in the Illawarra Mercury
- Mail out – all households/businesses within 400m of site
- Our Wollongong: Join the Conversation - online survey, FAQ, key documents
- Media release
- Flyers/posters/feedback forms dropped off at local libraries
- Social media
- Opportunities for face to face consultations will be guided by Public Health Orders affecting the Wollongong LGA or Port Kembla.

The findings of this second phase of community consultation will be used to refine the draft Master Plan and reported for Council's future consideration.

PLANNING AND POLICY IMPACT

This report contributes to the delivery of Our Wollongong 2028 Goal 5 – “We have a healthy community in a liveable city”. It specifically delivers on the following:

Community Strategic Plan	Delivery Program 2018-2022	Operational Plan 2020-21
Strategy	4 Year Action	Operational Plan Actions
5.1.4 Urban areas are created to provide a healthy and safe living environment for our community	5.1.4.1 Provide an appropriate and sustainable range of quality passive and active open spaces and facilities	Prepare a landscape masterplan for King George V Oval
	5.1.4.1 Provide an appropriate and sustainable range of quality passive and active open spaces and facilities	Pursue actions outlined in the 2017-2021 Sports Ground & Sporting Facilities Strategy
	5.1.4.1 Provide an appropriate and sustainable range of quality passive and active open spaces and facilities	Implement actions from the Port Kembla 2505 Revitalisation Strategy in accordance with the strategy implementation plan
1.2.2 Government and community work together to mitigate the impacts of climate change on our environment and future generations	1.2.2.1 Our community is proactively engaged in a range of initiatives that improve the sustainability of our environment	Deliver priority actions from the Urban Greening Strategy Implementation Plan 2017-21

SUSTAINABILITY IMPLICATIONS

The draft Master Plan has carefully considered the natural values of the site. All proposed initiatives utilise site topography, avoiding extensive cut and fill exercises and maintaining current landscape form.

Existing bush regeneration areas will be maintained with targeted improvements to sightlines improving safety along key pedestrian paths. Where new infrastructure intersects with vegetation it is expected that integrated landscape outcomes are achieved enhancing both objectives.

Planting of the steeper sections of the grassed park area with coastal native grasses has also been identified as a priority. This proposed transitional landscape assists in restoring vegetation of the hill area to a pre-European state, whilst also reducing maintenance requirements yet maintaining expansive views to the coast and surrounds. It is envisaged that Council will conduct pilots to determine plant suitability before proceeding to large scale deployment. A Vegetation Management Plan is required to assist in managing these works to ensure that these proposed plantings are protected, maintained and enhanced and integrate with other planned infrastructure.

Finally, in accordance with Council’s long-term commitment to urban greening, increased natural shade across the site will be pursued over time.

FINANCIAL IMPLICATIONS

The draft Master Plan envisages significant works that will provide new and upgraded recreational facilities along with additional supporting amenities. These works are designed to be delivered in a staged manner over time.

Additional information including preliminary high-level cost estimates will be provided to Council in April–June 2021 following community feedback and development of a revised draft Master Plan and an accompanying Implementation Plan. It is anticipated that once adopted, the King George V Recreation Master Plan will help inform the forward capital delivery program requirements and external grant opportunities, including the Port Kembla Community Infrastructure Fund.

CONCLUSION

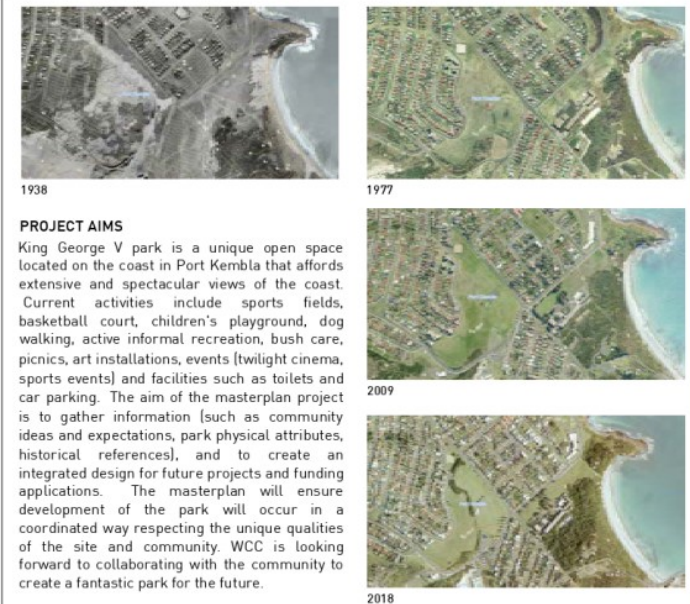
The draft King George V Park Recreation Master Plan has been developed to stimulate community input to guide the future direction of the King George V precinct. The prepared draft Master Plan focuses on improving community access, engagement and usage of the park for locals and visitors. Key features of the draft Master Plan include an expanded play precinct, new sport facilities, improved hardcourt facilities, new path networks and a new skate facility. Endorsement of the draft King George V Park Recreation Master Plan for exhibition will allow community feedback and input, to assist in refining the Master Plan and ensuring its success.



LOCATION PLAN



OPEN SPACE LAND OWNERSHIP









Skate Elements



Multi Sports Area



New Sporting Amenities



Challenging Play Elements



Giant Slide



Playground



Picnic Shelter

NOTES

- 1 NEW PICNIC FACILITY INCLUDING SHELTERS, BARBECUES, WATER REFILL STATION, SHADE TREE PLANTING.
- 2 SKATE FACILITY - LINEAR DESIGN WITH PLACED CHALLENGING ELEMENTS.
- 3 PLAY PRECINCT - EXPAND PLAYGROUND. PROVIDE FACILITIES INCLUDING PLAY EQUIPMENT, SHADE, FURNITURE, BINS.
- 4 UTILISE THE HILL, CATERING FOR ADVENTURE AND NATURE PLAY.
- 5 2.5M WIDE SHARED PATH
- 6 CRICKET SAFETY NETTING.
- 7 EXISTING CRICKET SIGHT SCREEN



*Plan 1. Play and Picnic Precinct
1:250@A1*



Indicative Gathering Circle



Indicative Art Work



Indicative Art Work



Indicative Art Work



*Plan 2. Viewing Area on Hill
NTS*



Panoramic View



KING GEORGE V PARK

DRAFT RECREATION MASTERPLAN

MILITARY ROAD PORT KEMBLA
DHARAWAL COUNTRY

PREPARED BY: WCC LANDSCAPE SECTION
DRAWN: NDR SCALE: 1:250@A1 DATE: JAN 2021
TR-795 DWG NO: 6862/SK04 Issue 1





King George V Park Master Plan

Engagement Report: Phase 1 – Initial Engagement
to Inform Draft Master Plan

November 2020

Table of Contents

Executive Summary.....	3
Background.....	6
Stakeholders	7
Engagement with Aboriginal community.....	8
Results.....	10

The information in this report is based on data collected from community members who chose to be involved in engagement activities and therefore should not be considered representative.

This report is intended to provide a high-level analysis of the most prominent themes and issues. While it's not possible to include all the details of feedback we received, feedback that was relevant to the project has been provided to technical experts for review and

Executive Summary

We invited community members to share their ideas about King George V Park; how they use it and how we can improve it as a sporting, social and green space. Extensive community engagement has already occurred around the Park precinct as part of the Port Kembla Revitalisation Plan (PKRP). The King George V Park Master Plan is listed as an action in the Port Kembla Revitalisation Plan (6.5). The aim of this project was to further engage stakeholders and community members to inform the draft master plan design.

The engagement period ran from 13 October to 2 November 2020. The community were informed about the project through:

- Multiple notices in the Illawarra Mercury throughout October
- Media release on Council's website
- Email to previous participants and identified stakeholders
- Posters displayed in some Wentworth Street Port Kembla businesses, Warrawong and Wollongong libraries
- Posters emailed to local schools requesting it be included in their school newsletter
- Facebook
- Signs promoting the engagement placed around the Park

The community was asked through an online survey and hardcopy feedback forms whether they currently use King George V Park, their ideas about how the Park can be improved for the whole community and whether they still supported the vision developed for the Port Kembla Revitalisation Plan.

An interactive online mapping tool allowed people to 'pin' their ideas to share culture and history; amenities, access and connections; greening and shade; sports and recreation; children, young people and families; improving safety and ideas for other things. Some concerns were raised about the mobile compatibility of the mapping tool, with some finding it difficult to use. Those that contacted the Engagement team were offered alternative methods to provide feedback.

Due to COVID-19 restrictions, limited face to face engagement activities were undertaken. The community could book in a 20-minute period to attend an information session with Council staff, to learn about the Master Plan and provide feedback. 32 people attended an information session. 75 submissions were received via the online survey, email and hardcopy. The interactive mapping tool had 35 people place 160 pins. Feedback was also received through face-to-face meetings and online Zoom sessions with primary school students.

We received feedback from a wide range of community members, including:

- Local cricket and football sporting clubs who currently use King George V Oval
- People who live in the Port Kembla area
- Aboriginal Elders and community members
- Community groups (e.g. bushcare volunteers)
- School children

An overview of the community feedback is as follows:

Culture and history

Feedback indicated integrating local Aboriginal history and culture into the Park was important to reflect the site's significance to the local Aboriginal community. Creating an inclusive space incorporating local heritage and history would help encourage more residents to feel welcome in the space and enhance community connection.

Amenities and connections

It was suggested that more and updated amenities were needed at King George V Park. Better connectivity including more walking and bike paths throughout the park and improved access for people with disabilities, older people, mums with prams were seen as priorities, whilst improved weather-proof bus shelters and stops were mentioned.

Greening and shade

Residents generally noted the good work done by local bushcare groups operating in the park, but vegetation management in the Park was an issue for some respondents. More trees, including natives, especially for shade, was generally supported if lines of sight

were maintained with regular thinning of overgrown shrubs for safety reasons. Feedback raised the need for additional shade provisions over the playground and bus stops.

Sport and recreation

Improving clubhouse amenities including change rooms and storage space was mentioned in many submissions. More lighting and improved irrigation was suggested for both the cricket and football fields. An Athletics running track and outdoor gym equipment was also suggested.

Children, young people and families

There was strong support for expanding the playground and providing a broader range of play equipment and experiences including greater use of hill. Providing a skate-facilities for all ages and abilities and upgrading the playground and adding a bike track in the Park was suggested in many submissions. Some residents felt the space currently doesn't cater for passive recreation opportunities for older children, teens and more spaces for young people should be created.

Improving safety

Safety for people using the Park, and moving between the Park and the beach, was a key issue for respondents. Feedback indicated improving lighting, installing a net around the playground, clearing the thick shrubs and installing a pedestrian crossing from the Park to the beach would improve safety.

Other comments

Feedback indicated that off-leash dog facilities should remain and should be fenced. Some respondents suggested the hill area of the park could be used for more events and live entertainment. Some respondents said the park was good as is and no changes were necessary.

Those completing the online survey and hardcopy feedback forms indicated they currently use King George V Park and consider the Vision included in the Port Kembla Revitalisation Plan to still be relevant.

Background

Port Kembla is a suburb that is well known for its industry, Aboriginal culture and role in military history. Today, the face of Port Kembla is changing, with a shift away from heavy industry as new residents and businesses establish themselves in the region. The area is home to a thriving artists' community, historic hotels, three beautiful beaches and an ocean pool and five schools (preschool, primary and high school).

Extensive engagement in 2017 and 2018 informed the development of the Port Kembla 2505 Revitalisation Plan 2018 – 2043. The Revitalisation Plan outlines a plan forward for a number of spaces in Port Kembla including the Town Centre, Military Road spine, coastal areas, recreational areas and Coomaditchie Lagoon. Recreational areas include King George V Park, Port Kembla Pool and Surf Club.

King George V Park (the Park) sits at the corner of Military Road and Cowper Streets, opposite Port Kembla Beach, between Hill 60 and Coomaditchie Lagoon, and has strong Aboriginal cultural heritage. It is a popular area for both residents and tourists. Council invited the Traditional Custodian groups and Aboriginal community members to share their ideas for the space during the development of the Port Kembla 2505 Revitalisation Plan 2018 – 2043.

The Park offers a range of active recreational opportunities through the playground, cricket pitch, football field and basketball court. The Park also includes some vegetation along the base of the foothill, a very large off-leash dog area with amazing views over Port Kembla Beach, Port Kembla Pool and Perkins Beach. The Park has regular user groups including Port Kembla Cricket Club and Port Kembla Pumas Football Club. A Bushcare group also operates within the reserve and is overseen by Council.

The NSW Government has established the Port Kembla Community Investment Fund to activate, enhance and build community amenity in Port Kembla. Round Four opened in August 2020 with a total of \$2 million available. Successful applications for funding have seen a number of initiatives occurring at King George V Park, including new sports

lighting, upgraded sporting infrastructure, installation of small grandstand seating and a shade sail for the playground.

From the engagement for the Revitalisation Plan, the following vision themes arose for the Park.

Vision

“A vibrant and active recreation area, balancing a youth focus with organised sport facilities, catering to people of all ages.”

- Additional trees within the recreational area to provide shading and places to sit and picnic beneath.
- Retain and enhance sporting activities within the precinct.
- Provide paths and routes that improve connections within and through the park paired with lighting and planting.
- New infrastructure provides facilities and activity spaces that cater for youth.

In 2019/2020, Council engaged with young people from Port Kembla Public School, Port Kembla Youth Project and Warrawong High School regarding the upgrade of the basketball court. In addition to basketball court colours, young people were asked their ideas for the western side of the court. Ideas revolved around the following themes; recreation (e.g., yoga, handball, play equipment, painted games on ground), infrastructure (e.g., seating, bike racks, tables), public art and urban greening (particularly for shade).

Stakeholders

Stakeholders identified prior to the start of this engagement period included:

- Local residents
- Traditional Owners
- Aboriginal community members
- Port Kembla Primary School, Kemblawarra Primary School, Five Islands High School and Warrawong High School
- Neighbourhood Forums

- Multicultural groups
- Sporting groups using the Park
- Previous engagement participants
- Bushcare group

Methods

A project page published on Council's Engagement HQ website on 13 October 2020 provided a short video explaining the intent of the engagement, maps, Frequently Asked Questions, Important Links, survey tool and an interactive mapping tool.

The public exhibition of the King George V Park Master Plan was advertised through a number of methods including:

- Multiple notices in the Illawarra Mercury throughout October
- Media release on Council's website
- Facebook post on 13 October 2020
- Emails promoting the public exhibition were sent to key stakeholders including all Neighbourhood Forums and previous participants, with the invitation to share through their networks.
- Posters were displayed at Warrawong and Wollongong libraries and some Wentworth Street Port Kembla businesses
- Posters was emailed to local schools for inclusion in their newsletters
- 5 signs promoting the engagement were placed around the Park
- Invitation for the community to attend booked, COVID-safe information sessions

Feedback was invited through an online survey, an interactive mapping tool, face-to-face meetings, online Zoom sessions and via the information sessions.

Engagement with Aboriginal community

The approach to engagement in this project was informed by draft guidance documents for how Council should engage with Aboriginal community members. The project team

consulted with Council's Aboriginal Community Development Officer to plan a meaningful and culturally sensitive engagement and to identify Aboriginal organisations and individual community members who the project team should engage with. Traditional Custodians, individual community members and Aboriginal organisations were notified of the project before broader community engagement started and also sought their feedback throughout the three-week engagement period.

The draft engagement guidance document places high importance on face-to-face meetings with community members on a consistent basis (i.e., not just for the life of the project). The project team have ongoing relationships with a number of Aboriginal community members and were able to engage with these community members to discuss the Master Plan and gain feedback.

Meeting Aboriginal community members face-to-face was not appropriate for everyone due to COVID-19 safety restrictions, however a number of face-to-face meetings were able to occur. Many phone calls, emails, letters and four face-to-face meetings took place with Aboriginal community members during this project. Face-to-face meetings were held at spaces in the community where Aboriginal community members felt safe and comfortable. Illawarra Local Aboriginal Lands Council facilitated a Walk on Country for Council staff to better understand the Aboriginal history and cultural significance of the area.

Results

This section provides details on the participation at engagement activities (Table 1), the online participation summary (Table 2) and the feedback received via surveys, interactive map pins, feedback forms, emails, (Table 3) information sessions, meetings with Aboriginal Elders and primary school Zoom sessions.

Engagement Activity Participation

Details of the number of participants for each engagement activity are presented in Table 1 below.

Table 1: Engagement activity results

Engagement Activities	Participation
Targeted engagement meetings with Aboriginal Elders and community members	12
Attendance at Information Sessions during the exhibition period	32
Schoolchildren participating in zoom sessions (Port Kembla 45, Kemblawarra 22)	67

Online Participation

The usage statistics for the project page on Council's Engagement HQ website appears in Table 2.

Table 2: Summary of online participation

Measure and explanation	Usage
Unique Site Visits – Total number of visits to the website	955
Aware – Total number of users who viewed the project page	726
Informed - Total number of users who opened a hyperlink or read a document	373
Engaged – Total number of users who have actively contributed to the project by filling in the feedback form	51

Engagement feedback

The number of submissions received during the exhibition period are presented in Table 3.

Table 3: Feedback methods

Feedback methods	Participation
Engagement website survey tool	51
Email submission	1
Hardcopy submissions	22
PowerPoint submission	1
Interactive map tool	160 pins

Feedback was also received and noted at the information sessions, face- to-face meetings and school Zoom sessions with two of the four schools that accepted the invitation to participate in the engagement. Attendance at these sessions and meetings has been reported in Table 1 above rather than included in Table 3. The feedback has been incorporated into the results reported in the following sections.

Currently using King George V Park

We asked the community if they currently use King George V Park Via the online survey and the feedback forms. 42 people said they currently use it and two people said they don't currently use the Park.

Ideas about how King George V Park can be improved

We asked the community to share their ideas about how King George V Park can be improved for the whole community. The communities' ideas for improving the Park, whether received via the survey, feedback form, email, or face-to-face, have been themed into the following categories.

- culture and history
- amenities and connections
- greening and shade

- sport and recreation
- children, young people and families
- improving safety
- other things

Ideas to share culture and history

Respondents said sharing the history and culture of the space was important. They asked Council to integrate Aboriginal history into future plans for the Park to reflect how significant the site is to the local Aboriginal community. Adding signage that indicated the direction and distance to Aboriginal sites of significance in the area was suggested.

Creating an inclusive space reflecting local heritage and history would encourage more to feel welcome in the space and enhance community connection.

Other suggestions for incorporating culture and history include:

- Incorporate Aboriginal place names, stories, artwork and culture into the Park
- Information explaining the military history of the area
- Rename the Park to something more culturally appropriate, such as a Dharawal name.
- Acknowledgement of Aboriginal sports people
- Sports clubs to understand the history and Aboriginal culture of the area

Ideas for amenities and connections

People said more and updated amenities were needed at King George V Park. Toilets, seating, water fountains, BBQs and picnic tables were mentioned. Better connectivity, including more walking, bike and cycling paths throughout the park were raised by respondents. Better access for people with disabilities, older people and mums with prams was raised. More parking was requested to meet the growing popularity of the Park, especially during summer.

Suggestions for amenities and connections included:

- Additional tables, seating and covers, similar to the beach front, could be added installed adjacent to the playground to improve comfort as more families enjoy celebrations

- More walkways in the open field with areas for sitting and looking at the view
- Formalise the area on the hill overlooking the ocean with a terrace set up and picnic shelters overlooking the beach
- Bike/walking track from the beach to the play area to the basketball courts down Military Road to fields
- The toilets should be located closer to the playground or at least have a pathway connecting the playground to the toilets. There should be more toilets.
- The amenities in the park look tired
- Paths from the hill into the lower part of the oval
- At the moment there is not enough parking to service the beachgoers, people visiting the playground and sporting activities.
- Road markings for more cars
- Add BBQs near the oval, BBQs in lower levels of the reserve with easy access from Cowper Road for those with access issues
- Coffee van on weekends and throughout summer
- Space for community food markets
- A water filling station would assist the myriad of individuals and teams undertaking activities eg: runners, soccer, football, cricket teams, gym and other training

Ideas for greening and shade

Some said vegetation in the Park was an issue. More trees were advocated by many respondents, with some suggestions saying undergrowth or lower shrubs needed greater attention, to prevent antisocial behaviour and improve lines of sight. Many commented on the need for more shade throughout the Park, including around sporting fields for spectators, to enjoy picnicking and the playground. Including more trees and natives was seen as an opportunity to involve the Aboriginal community in bush care, for community planting, to provide food, encourage wildlife and combat global warming on a local scale.

Suggestions for greening and shade include:

- Additional trees are fine if they are spaced out and provide useable areas around and underneath

- The current vegetation in the park creates issues with the connectivity of the park as well as line of site
- Balancing views and planting of trees
- The vegetation in the Park should be consistent
- More opportunities for community planting as this creates more ownership over the space. The planting doesn't need to happen all at once.
- Reduced areas for mowing

Ideas for sport and recreation

Improving clubhouse amenities was mentioned by sporting clubs and in many submissions. Some suggested new amenities would need to focus on gender equity with change rooms for both men and women. More lighting and improved irrigation was suggested for both the cricket and football fields. The need for greater storage space was also mentioned. An athletics running track and outdoor gym equipment was suggested.

Suggestions for sport and recreation include:

- Improve/upgrade facilities for sporting clubs that use fields
- Storage of equipment is a huge issue, as the club currently uses a storage container
- Some low fencing around the fields would be good as it could deter motorbikes from damaging the fields
- Current change rooms provide very little privacy
- It would be great if the current playing surfaces – football and junior cricket oval could be levelled out
- Restore the rundown clubhouse, cricket screens, new scoreboard, floodlights
- More soccer nets, new scoreboard and floodlights
- Improve the current tennis courts
- A multi-purpose court
- Multiuse enclosed courts for tennis and indoor soccer
- Increase provision for little athletics, school athletics carnival and local training groups.
- Running track around the boundary of the Park
- Gym equipment stationed around the Park similar to Lang Park

Ideas for children, young people and families

Providing a skate park for all ages and abilities was raised by respondents. Requests were made for an upgraded playground, with many suggestions for how the playground could be improved. Some said an additional playground was needed. Respondents mentioned including a bike track in the Park. Suggested locations and features for these facilities were made. Other suggestions included flying foxes, waterslides and a ninja course. It was felt the space currently doesn't cater for teens. It was suggested Council apply for Port funds to create more spaces for young people.

Suggestions for children, young people and families include:

- Slides on hill
- Expand existing playground with updated equipment
- Upgrade the playground to including a flying fox, trampolines etc see new playground at Reddall Reserve
- It would be good to see another playground near the basketball courts
- Incorporate nature play opportunities on the hill connected to the playground.
- Include water play in the playground with a warped wall (ninja course) make it for a variety of ages
- Not all kids play team sports – there should be more variety of things/places to play
- Bike path – various locations around the perimeter of the park, around the cricket ground from the hill to the carpark
- Mini-bike path with road signs and roundabouts
- Invest in a skate park for the area – one that has opportunities for progression and caters for young children to people who are more advanced. Make it a family space.
- Skate park – different locations – suitable for learners too

Ideas for improving safety

Safety for people moving between the Park and the beach was raised in many submissions. A pedestrian crossing, pedestrian refuge and speed humps and were

some of the suggested solutions. Safety around parking was considered an issue especially during summer. Respondents said more lighting would improve safety around the cricket club, playground and carpark. It was stated locals avoid areas in the Park with thick shrubbery and trees due to anti- social behaviour. Clearing the thick shrubs, it was felt, would improve the perception of safety. Respondents said netting around the playground would protect kids from cricket balls.

Suggestions for improving safety include:

- Add a pedestrian crossing between the playground carpark and main pool/beach carpark would improve safety. This would be a proactive addition as many families with young children and prams, beach equipment and the elderly traverse this crossing.
- Crossing roads is dangerous due to the traffic
- More lighting around the car park closer to the playground to deter unwanted things happening at night
- This area is unsafe due to poor visibility (because of trees) and ample hiding spots for threatening behaviour
- The parking along Cowper Street is unsafe especially for children
- On nice days when people flock to the area, there isn't enough parking, and safe parking in particular
- Public safety should be given high consideration

Ideas for other things

The off-leash dog area was mentioned in many submissions. Respondents suggested the Park could be utilised for events and artwork. Some said the Park was good as it is, and no changes were necessary. Submissions mentioned sealing the carpark and including a café in the Park.

Suggestions for other things include:

- Keep the off-leash dog area, but fence it
- Don't reduce the dog area. Add a dog agility park, bubblers for dogs and recycling bins.

- Venue for live music, open air cinema, market stalls
- Outdoor amphitheatre for events
- Potential location for sculptures by the sea
- Music box
- Food truck could come on the site for events
- Seal the carpark
- The oval should be left as is. It is already a wonderful space for families and the community.
- Don't need to do much to the area

Vision for King George V Park

We asked the community if the Vision for the Park outlined in the Port Kembla Revitalisation Plan was still relevant via the online survey and the hard copy feedback forms. We also asked if the actions in the Vision were still important for King George V Park.

Most people who answered this question felt the Vision was still relevant. Many included a comment about aspects of the Vision. Six people made comments on sport, trees, parking and the Parks' name without directly indicating their support for the Vision. One person said they were happy with the whole area as it is.

Relevance of Vision	Responses
Yes (still relevant 39), Yes (somewhat relevant 2)	41
Comments only, relevance not mentioned	6
No	1

Mapping Results

An interactive map on the website provided the community with an option to share their ideas on how to improve the Park for the whole community. The map covered the King George V Park and surrounding areas and identified: sporting facilities, vegetation, existing and proposed cycleways, bus routes, views, and activity hubs.

35 people place 160 pins using the online interactive map tool. Respondents were able to identify locations on the digital map, place pins, make comments and attach photos.

We asked the community to share their ideas on: culture and history; amenities and connections; greening and shade; sport and recreation; children, young people and families; improving safety; and any other ideas. The information and feedback will inform the creation of the Draft Master Plan.

A summary of the responses for each pin category have been themed and appear below.

Culture and history - 8 pins were placed for this category:

- Name of the Park
- Aboriginal art
- Indigenous food walk
- Cricket club building
- Name of Cricket Club shipping container

Amenities and connections - 35 pins were placed for this category:

- Bike paths/cycleway
- Footpaths
- Water fountains
- BBQs
- Signage
- Improve carpark
- Picnic tables
- Improve toilets
- Provide more shade
- Improve pedestrian access
- More seating

Greening and shade - 28 pins were placed for this category:

- More trees for shade

- Native trees, native grasses, coastal natives
- Coastal natives
- Trees vs. views
- Fig trees
- Eucalyptus
- Vegetation to promote birdlife
- Walking trails
- Fruit trees
- Plant species signage
- Vegetation on the hill

Sport and recreation - 34 pins were placed for this category:

- Skatepark
- Improve the playground
- Change use of junior cricket field
- Running track
- Outdoor exercise equipment
- Professional cricket matches
- Updated clubhouse
- Digital scoreboard
- Ninja course
- Improve basketball nets, backboards
- Bike path around the Park

Children, young people and families - 31 pins were placed for this category:

- Ninja course
- Protection from cricket balls
- Amphitheatre
- Skatepark
- Picnic, BBQ facilities, water fountains, seating and shade
- Bike path
- Playground around landscape,

- Pop up food markets
- Ping pong table
- Pedestrian refuge, extend footpaths

Improving safety - 14 pins were placed for this category:

- Formalised pathway/stairs
- Cricket nets in poor position
- Pedestrian refuge/crossing
- More lighting
- Stairs
- Fences

Other ideas - 11 pins were placed for this category:

- Move Bushcare seat
- Charging stations
- Café, pop up food stall or truck
- Drinking fountains/dog bowls
- Exercise equipment
- Notice wall
- Events
- Road crossing