

**ITEM 10 TENDER T1000183 - HIBISCUS STREET BRIDGE REPAIR - WOLLONGONG SURF LEISURE RESORT**

This report recommends acceptance of a tender for the repair and remediation works of the Hibiscus Street Bridge – Wollongong Surf Leisure Resort in accordance with the requirements of the *Local Government Act 1993* and the *Local Government (General) Regulation 2021*.

Council has a program of regular bridge condition inspections which includes the assessment of key elements that affect the resilience of the bridge to hazards. Inspections of the existing shared traffic and pedestrian bridge superstructure and abutments of the Hibiscus Street, Fairy Meadow bridge found that repairs and remediation works were required to maintain the structural integrity, public safety and service life of the bridge.

### RECOMMENDATION

- 1 In accordance with Section 178(1)(a) of the *Local Government (General) Regulation 2021*, Council accept the tender of Cadifern Pty Ltd for repair and remediation works of the Wollongong Surf Leisure Resort Bridge, in the sum of \$639,225.40, including GST.
- 2 Council delegate to the General Manager the authority to finalise and execute the contract and any other documentation required to give effect to this resolution.
- 3 Council grant authority for the use of the Common Seal of Council on the contract and any other documentation, should it be required, to give effect to this resolution.

### REPORT AUTHORISATIONS

Report of: Jeremy Morgan, Manager Project Delivery (Acting)  
Authorised by: Joanne Page, Director Infrastructure + Works

### ATTACHMENTS

- 1 Locality Plans

### BACKGROUND

The shared traffic and pedestrian bridge located within the boundaries of Wollongong Surf Leisure Resort (WSLR) spans over a shared path and the Towradgi Arm of Fairy and Cabbage Tree Creeks, providing access to the eastern side of the WSLR. The bridge was constructed in the 1980's and following visual inspections and structural condition assessments carried out by the Council along with the Australian Road Research Board (ARBB) it is showing various signs of deterioration including:

- Corrosion on the primary steel girders, bearing plates and connections, reducing the structural capacity
- Corrosion along the whole length and at connection points of the cross-bracing members, reducing the service life
- Minor cracking in the deck concrete, showing evidence of efflorescence and water ingress
- Leaking bridge deck joints allowing water ingress and corrosion to structural elements
- Moderate scouring on the abutment embankments
- Barriers not conforming with the requirements of Australian Standards

The above cited structural condition assessments identified the bridge as requiring urgent repair works to continue to provide a safe and structurally sound traffic bridge. Without intervention, further deterioration of the bridge would be likely, which would cause a requirement for greater remediation efforts in the future.

Tenders were invited for this project by the open tender method with a close of tenders of 10.00 am on 2 April 2025.

Three (3) tenders were received by the close of tenders and all tenders have been scrutinised and evaluated by a Tender Evaluation Panel constituted in accordance with Council's Procurement Policies and Procedures and comprising representatives of the Project Delivery, Infrastructure Strategy and Planning and Governance and Customer Service Divisions.

The Tender Evaluation Panel evaluated all tenders in accordance with the following Evaluation criteria and weightings as set out in the formal tender documents:

#### **Mandatory Criteria**

- 1 Satisfactory references from referees for previous projects of similar size and scope
- 2 Financial evaluation acceptable to Council which demonstrates the tenderer's financial capacity to undertake the works
- 3 Accredited Workplace Health and Safety Management System

#### **Evaluation Criteria**

- 1 Cost to Council – 35%
- 2 Appreciation of scope of works and construction methodology – 20%
- 3 Experience and satisfactory performance in undertaking projects of similar size, scope and risk profile, including staff qualifications and experience – 15%
- 4 Demonstrated strengthening of local economic capacity – 10%
- 5 Proposed sub-contractors – 5%
- 6 Project Schedule – 10%
- 7 Workplace health and safety management system and environmental management policies and procedures – 5%

The mandatory evaluation criteria have been met by the recommended tenderer.

The Tender Evaluation Panel utilised a weighted scoring method for the evaluation of tenders which allocates a numerical score out of 5 in relation to the level of compliance offered by the tenders to each of the evaluation criteria as specified in the tender documentation. The method then considers pre-determined weightings for each of the evaluation criteria which provides for a total score out of 5 to be calculated for each tender. The tender with the highest total score is considered to be the tender that best meets the requirements of the tender documentation in providing best value to Council. Table 1 below summarises the results of the tender evaluation and the ranking of tenders.

TABLE 1 – SUMMARY OF TENDERS RECEIVED

<b>Name of Tenderer</b>	
Cadifern Pty Ltd	CONFORMING
Cappa Construction & Maintenance Pty Ltd	CONFORMING
McElligotts (NSW) Pty Ltd	CONFORMING

#### **PROPOSAL**

Council should authorise the engagement of Cadifern Pty Ltd to carry out the repair and remediation works of the WSLR Bridge in accordance with the scope of works and technical specifications developed for the project.

The recommended tenderer has satisfied the Tender Evaluation Panel that it is capable of undertaking the works to Council's standards and in accordance with the technical specification.

An acceptable financial capability evaluation has been received in relation to the recommended tenderer.

Referees nominated by the recommended tenderer have been contacted by the Tender Evaluation Panel and expressed satisfaction with the standard of work and methods of operation undertaken on their behalf.

## CONSULTATION AND COMMUNICATION

- 1 Members of the Tender Evaluation Panel
- 2 Nominated Referees

## PLANNING AND POLICY IMPACT

This report contributes to the delivery of Our Wollongong 2032 Goal 6. It specifically delivers on the following:

Community Strategic Plan 2032		Delivery Program 2022-2026
Strategy		Service
6.7	Maintain the service levels of our roads, footpaths and cycleways to an acceptable standard	Transport Services

## RISK ASSESSMENT

The risk in accepting the recommendation of this report is considered low on the basis that the tender process has fully complied with Council's Procurement Policies and Procedures and the *Local Government Act 1993*.

The risk of the project works or services is considered medium based upon Council's risk assessment matrix and appropriate risk management strategies will be implemented.

The existing bridge was classified as requiring urgent repair works according to the site inspections and structural condition assessments conducted by Council and the ARBB. Previous predictions at the current corrosion rate along with the decline of the structural capacity posed a risk for failure in 2028. There are several impacts including safety, financial and reputational risks that should be considered if Council decides not to undertake the repair and remediation works of the bridge.

## SUSTAINABILITY IMPLICATIONS

Economic sustainability implications are considered relevant to the re-use of the existing bridge members with extended service life following repairs and rehabilitation, as well as to reduce the maintenance costs of the existing structure and to reduce the likelihood of damages in case of a potential structural failure.

## FINANCIAL IMPLICATIONS

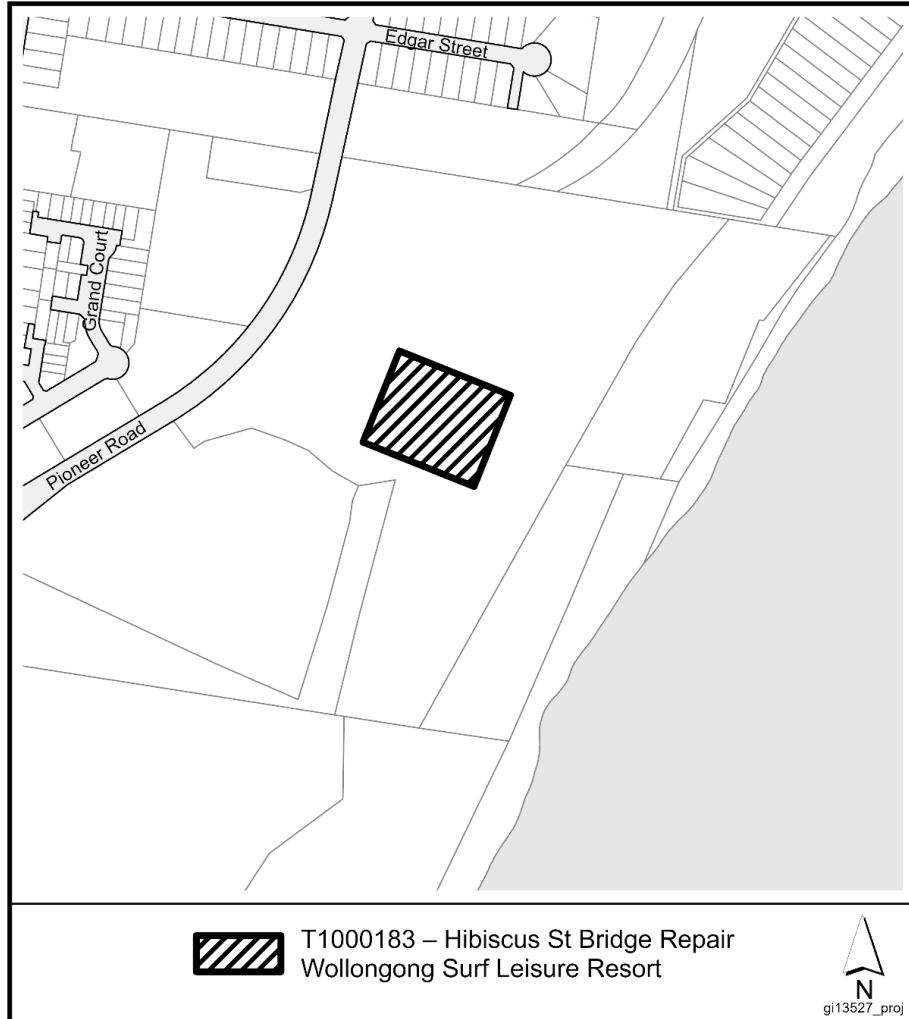
It is proposed that the total project be funded from the following sources as identified in the Operational Plan –

2024/25 Capital Budget

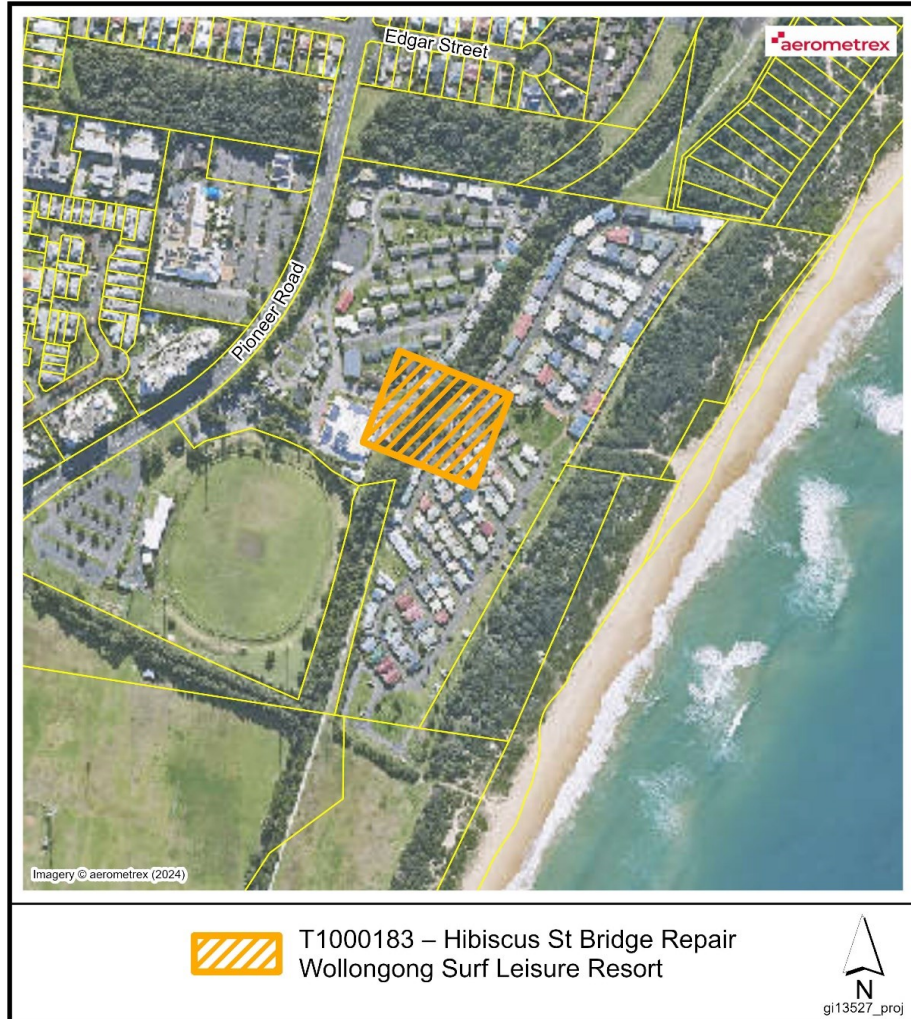
2025/26 Capital Budget

## CONCLUSION

Without intervention, further deterioration of the Hibiscus Street bridge is likely, which poses risks to structural integrity, public safety, service life of the bridge and increased remediation costs. Therefore, Council should consider the recommendations of this report.



While every effort has been made to ensure the highest possible quality of data, no liability will be accepted for any inaccuracy of the information shown.  
Copyright © Wollongong City Council, Mapping Services Section. This map may not be reproduced in any form whatever without the express written permission of Wollongong City Council.



While every effort has been made to ensure the highest possible quality of data, no liability will be accepted for any inaccuracy of the information shown.  
Copyright © Wollongong City Council, Mapping Services Section. This map may not be reproduced in any form whatever without the express written permission of Wollongong City Council.