

ITEM 8

CITY OF WOLLONGONG TRAFFIC COMMITTEE MINUTES OF MEETING HELD 12 OCTOBER 2021

The City of Wollongong Traffic Committee meeting was held on 12 October 2021. The items in Sections 2, 4 to 6 of the Traffic Committee Minutes are to be adopted by Council through delegated authority. The items listed in Section 3 of the Traffic Committee Minutes are the object of this report and are recommended to Council for approval for temporary Regulation of Traffic on public roads for works or events by independent parties.

RECOMMENDATION

In accordance with the powers delegated to Council, the Minutes and Recommendations of the Wollongong Traffic Committee meeting held on 12 October 2021 in relation to Regulation of Traffic be adopted.

REPORT AUTHORISATIONS

Report of: Trish McClure, Manager Infrastructure Strategy + Planning
Authorised by: Joanne Page, Director Infrastructure + Works - Connectivity Assets + Liveable City (Acting)

ATTACHMENTS

- 1 Convoy TCP
- 2 Australia Day TCP
- 3 New Years Eve 2021 Wollongong TCP
- 4 Australia Day Aquathon TCP
- 5 Illawarra Cycle Club TCP
- 6 Triathlon Club Events TCP
- 7 Vivian Street Kembla Grange TCP
- 8 Sheaffes Neeson Kembla Grange TCP
- 9 Yallah Bay Road TCP
- 10 Thomas Street Tower Crane Removal TCP

1. BULLI TOPS – PRINCES HIGHWAY – CAMP QUALITY CONVOY – SUNDAY 5 DECEMBER 2021

BACKGROUND

In light of NSW changes to COVID restrictions, the event organisers are planning to run the Truck and Bike Convoy on 5 December 2021.

The event is one of the largest regional one-day fundraisers in the country with funds raised providing direct support to individuals and families affected by potentially life-threatening medical conditions, charities that work with these people, and local hospitals. This year's event will be the same route as every other year from Appin to Albion Park, except the end point will be the corner of Airport Road and the Princes Highway (Albion Park).

The main road closure is the Old Princes Highway from Sublime Point at Madden Plains to the M1 northbound ramp, Helensburgh. There will be traffic control at the following points:

- Wedderburn Road, (Appin Mine for Lead Trucks)
- Princes Highway, Maddens Plains Closure (Convoy trucks)
- Old Mount Ousley Road intersection

The closure time will be on Sunday 5 December 2021, from 4.30am to 11.30am.

COMMITTEE'S RECOMMENDATION

The road closures in the attached plans be approved subject to [Council's Standard Conditions for Road Closures](#) and the submitted Traffic Control Plans.

CONSULTATION AND COMMUNICATION

Consultation with affected property owners is a condition of approval for this event.

2. EAST CORRIMAL – STATION STREET – CHRISTMAS STREET PARTY

BACKGROUND

Residents of Station Street in East Corrimal have requested a road closure of Station Street, East Corrimal, between Duff Parade and Pioneer Road, in order to hold an annual street party. The event is proposed to take place on 4 December 2021, between 6.00pm to 10.30pm.

Invitations have been distributed and organisers have received no objections. There is broad support to proceed. Cars will still be allowed access to driveways during this time.

COMMITTEE'S RECOMMENDATION

The road closures of Station Street be approved subject to [Council's Standard Conditions for Street Parties](#).

CONSULTATION AND COMMUNICATION

Consultation with the immediate community has been carried out prior to the application being lodged with Council.

3. WOLLONGONG – CLIFF ROAD AND ENDEAVOUR DRIVE – AUSTRALIA DAY 2022

BACKGROUND

The proposed road closures are for the purpose of a motor vehicle convoy from Stuart Park to Flagstaff Hill and community safety due to the audience expected to view the 9pm fireworks display. If these two components proceed in 2022, the approved traffic control plans will be enacted.

There are two traffic components to the Australia Day program for 2022.

1. Rolling road closure from Stuart Park to Flagstaff Hill from 5pm – 5:30pm. The rolling road closures will be implemented to allow for a motor vehicle convoy to travel from Stuart Park carpark, along Cliff Road and left onto Endeavour Drive, where it will conclude at Flagstaff Hill.
2. Road closures on Cliff Road and Endeavour Drive from 8pm – 9:30pm The proposed road closures are to be implemented from 8pm until 9:30pm on 26 January 2022 for the purpose of a fireworks display. In the current planning, there will not be stalls, food offerings or other activities as per previous years. The fireworks display will occur from 9pm until 9:10pm with the roads remaining closed for safe egress from the precinct.

Road closures:

Cliff Road – between Georges Place and Marine Drive

Endeavour Drive – from Marine Drive in both directions

Managed access points:

Endeavour Drive at Marine Drive

Cliff Road at Marine Drive

Should it be safe to do so, the roads will be reopened earlier.

COMMITTEE'S RECOMMENDATION

The road closures of Cliff Road and Endeavour Drive be approved subject to [Council's Standard Conditions for Road Closures](#) and the submitted Traffic Control Plans.

CONSULTATION AND COMMUNICATION

Consultation for the Australia Day event prior to implementation will include:

- Emergency services agency meeting – took place on Thursday 7 October, however, Police and NSW Fire & Rescue weren't present. The agencies will be sent a summary of the planning W/C 11 October
- Work with the harbour users and local businesses
- Work with the bus and taxi companies
- Resident and business notification distributed in the 2nd week of January and will include the details of the Aquathon (organised by Activate events) road closures as they all relate to the Australia Day program and to prevent community confusion around receiving two different notifications
- Onsite signage and VMS boards to be installed 1 week prior, to advise of road closures

4. WOLLONGONG – CLIFF ROAD AND ENDEAVOUR DRIVE – NEW YEAR'S EVE 2021

BACKGROUND

The proposed road closures are for the purpose of community safety due to the potential audience expected to view the 9pm fireworks display. If the fireworks display proceeds in 2021, the approved traffic control plans will be enacted.

The proposed road closures are to be implemented from 8pm until 9:30pm on 31 December 2021 for the purpose of a fireworks display. There will not be stalls, food offerings or other activities as per previous years.

Should it be safe to do so, the roads will be reopened earlier.

The fireworks display will occur from 9pm until 9:10pm at the latest, with the roads remaining closed for safe egress from the precinct.

Road closures:

Cliff Road – between Georges Place and Marine Drive
Endeavour Drive – from Marine Drive in both directions

Managed access points:

Endeavour Drive at Marine Drive
Cliff Road at Marine Drive.

COMMITTEE'S RECOMMENDATION

The road closures of Cliff Road and Endeavour Drive be approved subject to [Council's Standard Conditions for Road Closures](#) and the submitted Traffic Control Plans.

A second traffic controller to be posted at the roundabout at the intersection of Harbour and Crown Streets for the period of this component of the road closure, being 5:00pm to 5:30pm.

CONSULTATION AND COMMUNICATION

Consultation for the New Year's Eve event will include:

- Emergency services agency meeting – took place on Thursday 7 October, however, Police and NSW Fire and Rescue weren't present. The agencies will be sent a summary of the planning W/C 11 October

- Work with the harbour users and local businesses
- Work with the bus and taxi companies
- Resident and business notification distributed in the 2nd week of December
- Onsite signage and VMS boards to be installed 1 week prior, to advise of road closures

5. WOLLONGONG/FAIRY MEADOW – CLIFF ROAD AND ELLIOTTS ROAD – AUSTRALIA DAY AQUATHON 2022

BACKGROUND

Activate Events have applied to hold an Australia Day Aquathon event on Wednesday 26 January 2022. The event requires the road closure of Cliff Road from 8:00am to 11:30am to allow participants to enter (northbound) from the Blue Mile at Wollongong Harbour (bottom Cliff Road) onto Cliff Road for 200m. The event also requires the road closure of Elliotts Road between 8.30am to 10am, with runners arriving southbound cycle path parallel to Squires Way, North Wollongong (heading north) from 8.30am to 9.45am. Runners are to keep to the right side of Elliotts Road and barriers will be placed to close off Fairy Meadow Surf Club car park.

COMMITTEE'S RECOMMENDATION

The road closures of Cliff Road and Elliotts Road be approved subject to [Council's Standard Conditions for Road Closures](#) and the submitted Traffic Control Plans.

CONSULTATION AND COMMUNICATION

Consultation with affected property owners is a condition of approval for this event.

6. MOUNT KEIRA – MOUNT KEIRA ROAD AND HARRY GRAHAM DRIVE – ILLAWARRA CYCLE CLUB

BACKGROUND

The Illawarra Cycle Club have proposed road closures on Mount Keira Road and Harry Graham Drive, Mount Keira, to permit a monthly series of Club road races, to be held on the second Saturday of each month. Approval is requested for the road closure of the section of Mount Keira Road between Clive Bissell Drive and Picton Road, and on Harry Graham Drive between Mount Keira Road and Fire Trail 15B (near the non-operational coal conveyor at O'Brien's Drift).

This event is a previously approved local traffic committee agenda item that will lapse on 11 December 2021. This previous event was endorsed at the 26 August 2020 Local Traffic Committee meeting and approved by the subsequent Council meeting on 21 September 2020.

The closures are to take effect from January 2022 to December 2022, between the hours of 12:30pm to 5pm. The club is planning to use days where the Mount Kembla Motorcycle facility will not have regular events. Residents and other landowners will be able to access their sites via Cordeaux Road and Harry Graham Drive at Mount Kembla during the closures. For through drivers, the alternate route will be via Mount Ousley Road, Clive Bissell Drive and Mount Keira Road east of Clive Bissell Drive.

As the road closure is rolling, Council can request the road not be closed on certain weekends if other events are occurring. This is to balance road use amongst the community. Also, if the closure impacts traffic negatively, the closure approval will be revoked.

COMMITTEE'S RECOMMENDATION

The proposed road closures of Harry Graham Drive and Mount Keira Road be approved subject to [Council's Standard Conditions for Road Closures](#) and the submitted Traffic Control Plans.

CONSULTATION AND COMMUNICATION

Consultation with the affected parts of the community is a condition of approval for this event.

7. PORT KEMBLA – GLOUCESTER BOULEVARD AND MILITARY ROAD – TRIATHLON CLUB EVENTS

BACKGROUND

The Illawarra Triathlon Club has conducted these events over a number of years and have worked to ensure that the events have minimal impact on the community. The Club proposes its Triathlon Race Series for the following race dates:

- 21 November 2021
- 19 December 2021
- 9 January 2022
- 20 February 2022
- 13 March 2022
- 17 April 2022
- 15 May 2022

The on-road cycling part of the triathlon program requires the closure of Gloucester Boulevard between Darcy Road and Reservoir Street from 7.15am to 10.45am. As in previous years, residents will be permitted onto Gloucester Boulevard between races once the course is clear of participants.

COMMITTEE'S RECOMMENDATION

The road closures of Gloucester Boulevard and Military Road be approved subject to [Council's Standard Conditions for Road Closures](#) and the submitted Traffic Control Plans.

CONSULTATION AND COMMUNICATION

Consultation with affected property owners is a condition of approval for this event.

8. KEMBLA GRANGE – VIVIAN STREET – INSTALLATION OF SWIMMING POOL

BACKGROUND

Traffic Logistics have made application for a road closure for the installation of a swimming pool. The proposed closure is for Vivian Street, Kemplab Grange, on Wednesday 10 November 2021 from 7am to 11am. Traffic Logistics have indicated they will manage resident access into/out of the affected street and non-residents will be sent around as appropriate.

COMMITTEE'S RECOMMENDATION

The road closure of Vivian Street be approved subject to [Council's Standard Conditions for Road Closures](#) and the submitted Traffic Control Plans.

CONSULTATION AND COMMUNICATION

Consultation with affected property owners is a condition of approval.

9. KEMBLA GRANGE – SHEAFFES ROAD AND NEESON ROAD – DRAINAGE RECTIFICATION WORKS WITHIN SHEAFFES ROAD

BACKGROUND

Western Earthmoving have made application for a road closure to carry out drainage rectification works within Sheaffes Road. The proposed work involves a closure of the corner of Sheaffes Road and Neeson Road, on 2 November 2021 from 7.00am to 6.00pm.

COMMITTEE'S RECOMMENDATION

The road closures at the corner of Sheaffes Road and Neeson Road be approved subject to [Council's Standard Conditions for Road Closures](#) and the submitted Traffic Control Plans.

Council to liaise with the applicant to confirm the closure is for one day only and provide feedback to the Bus Companies.

CONSULTATION AND COMMUNICATION

Consultation with affected property owners is a condition of approval.

10. DAPTO – YALLAH BAY ROAD – UPGRADE TO TALLAWARRA POWER STATION

BACKGROUND

Clough Group have made application for a road closure of Yallah Bay Road, Dapto, to upgrade the existing Power Station. The applicant is applying to close the road from 1 December 2021 to 1 November 2022.

COMMITTEE'S RECOMMENDATION

The road closure of Yallah Bay Road be approved subject to [Council's Standard Conditions for Road Closures](#) and the submitted Traffic Control Plans. A condition of this closure is that a detour footpath around the footbridge must be constructed prior to closing the road.

Approval for the road closure to be forwarded to the applicant only when the route for the active transport network is constructed. The applicant must first make an application to construct a footpath via a Section 138.

CONSULTATION AND COMMUNICATION

Consultation with affected property owners is a condition of approval.

11. HAYWARDS BAY – EASTPOINT AVENUE – CHRISTMAS STREET PARTY

BACKGROUND

A resident of Eastpoint Avenue in Haywards Bay has requested a road closure of Eastpoint Avenue, Haywards Bay, beginning at number 4 and ending at number 8, in order to hold a street party. The event is proposed to take place on 18 December 2021, between 1.30pm to 8.30pm.

COMMITTEE'S RECOMMENDATION

The road closure of Eastpoint Avenue be approved subject to [Council's Standard Conditions for Street Parties](#).

CONSULTATION AND COMMUNICATION

Consultation with the immediate property owners is a condition of approval.

12. WOLLONGONG – THOMAS STREET – CRANE REMOVAL

BACKGROUND

Sam Hanna & Co Pty Ltd have made application to remove the tower crane from the site at 6 Thomas Street, Wollongong. The plan is to have trucks to reverse into the site off Smith Street under traffic control, as the crane will be on the road and leave Thomas Street, then turn right back on to Smith Street.

This item was previously approved by the Traffic Committee at its meeting of 10 August 2021, however, the applicant has requested a change of date for the road closure. The road closure is proposed to take place on Saturday 6 November 2021, weather permitting, with a back-up date of Saturday 13 November 2021.

COMMITTEE'S RECOMMENDATION

The proposed road closure is approved subject to [Council's Standard Conditions for Road Closures](#) and the provided Traffic Control Plan.

CONSULTATION AND COMMUNICATION

It is a condition of approval that the applicant consult with residents and businesses who may be affected by the road closure.

PLANNING AND POLICY IMPACT

This report contributes to the delivery of Our Wollongong 2028 Goal "We have affordable and accessible transport". It specifically delivers on core business activities as detailed in the Service Plan 2020-21.

No trucks allowed into Westcliff until 6.00AM. Workers excluded.
No trucks are to park on Appin Rd illegally.
Controllers can direct trucks to rest areas.

M1 PRINCES HWY, BULLI TOPS

The diagram illustrates the road layout for Appin road, showing traffic flow and roadwork zones. Key features include:

- 180M TAPER:** A 180-meter taper section where traffic is being managed.
- 200M:** A 200-meter section of the road.
- Convoy trucks:** A note indicating that "Convoy trucks will be coming out off this road after the lead trucks leave Appin".
- TMA:** A note indicating that "TMA to help set up use Appin road as the X over if/when safe to do so. If FOG is around don't set up until its lifted".
- Roadwork Speed Limits Enforced:** Two rectangular signs indicating that roadwork speed limits are enforced.
- 60 ROAD WORK:** Two circular signs with a red border and the number 60, indicating a 60 km/h speed limit for roadwork.
- T ↑:** Two yellow rectangular signs with a black 'T' and an upward arrow, indicating a T-junction ahead.
- 60 AHEAD:** Two rectangular signs with a black border and the number 60, indicating a 60 km/h speed limit ahead.
- CHANGED TRAFFIC CONDITIONS AHEAD:** Two yellow rectangular signs indicating changed traffic conditions ahead.
- 80m intervals:** A vertical scale on the right side of the diagram showing intervals of 80m.

Convoy TCP - Page 3 of 9



2nd Stage Truck Parking (Maddens Plains) for Illawarra Convoy 2017

A to D - Start Point **A** to Finish Point **D** (13.2km) in total.

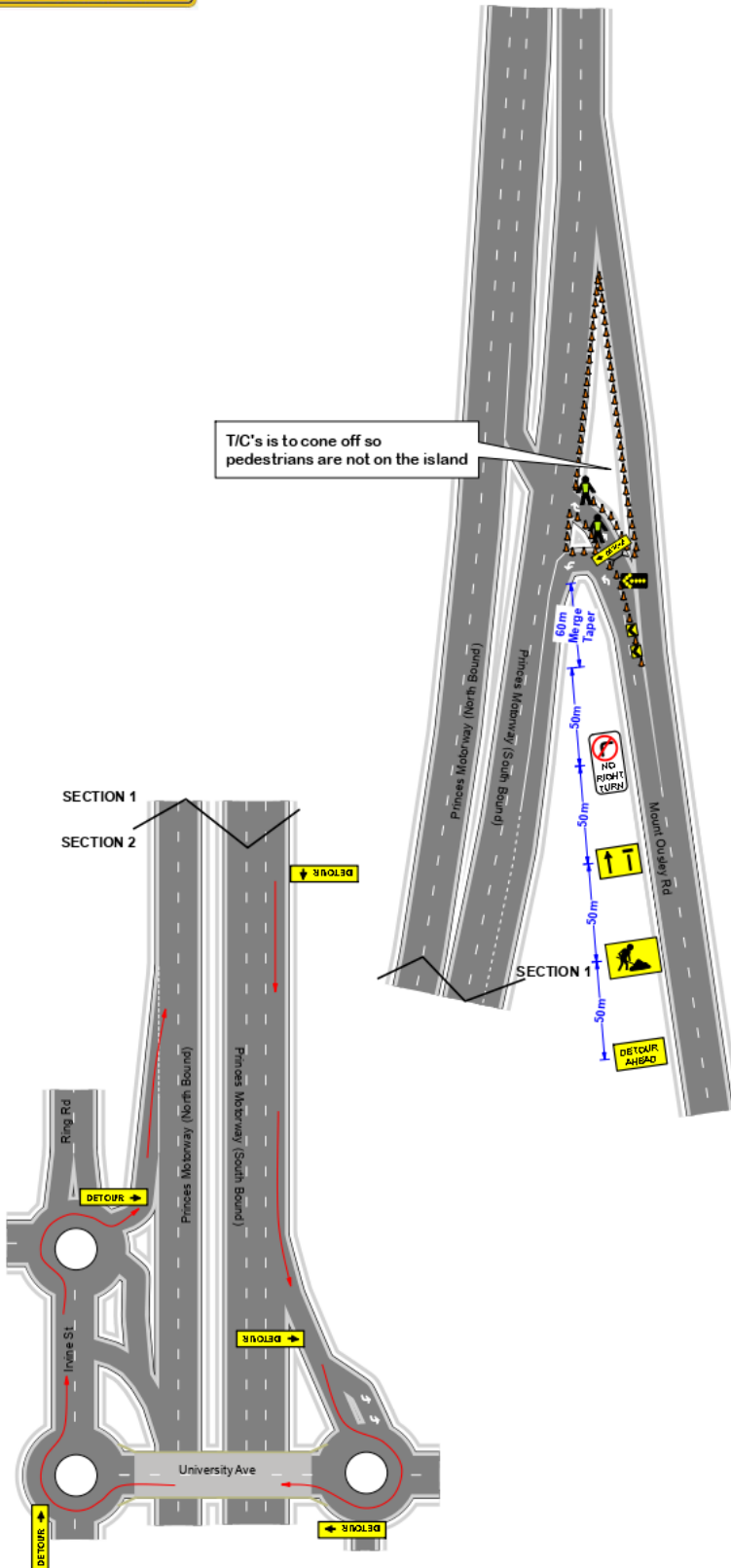
- 1 - **A** - Appin Road joins Princes Highway (13.2km),
- 2 - Panorama House Turn Off (12.8km, mark on the Left),
- 3 - Merge Lane from Princes Highway and F6 (12.3km),
- 4 - Turning section from Princes Highway back to Bulli Tops (11.6km, mark on the Right),
- 5 - **B** - Sublime Point Lookout access road (11.2km, mark on the Left),
- 6 - **C** - Entry to Boomerang Golf Club (5.5km, mark on the Left),

B to C un-interrupted truck parking with no turn offs or property accesses (6.1km).

- 7 - Misty Plains Stud Farm Entry (5.1km, mark on the Right),
- 8 - MET Campus (house) (4.8km, mark on the Right),
- 9 - Bridge over F6
- 10 - Darks Forest Road (4.3km, mark on the Right),
- 11 - Egg Farm and Residence (2.5km, mark on the Left),
- 12 - **D** - T Intersection after turning off F6.

Convoy TCP - Page 4 of 9

MT OUSLEY RD, MT OUSLEY



Email: info@traffic-logistics.com.au
Web: www.traffic-logistics.com.au
Wollongong - 02 4271 4999
Sydney - 02 4648 2200
Newcastle - 02 4050 0336

Client: Convoy

Location: Mt Ousley Rd, Mt Ousley

Tcp No: AS-007

REV: A 2x T/C

Scope Of Works: Lane closure

Tcp(s) Used as a Guide: 101

Tcp Designed Date: 14.11.19

Tcp Expire Date: 24.7.22



Designed by: M.Jones

Cert. No: 0033239253

Signature:

This TCP is to be set up and loaded up by qualified traffic controllers with minimum current implement Traffic Control Plan (TCP) Card. Any modifications to this TCP is to be made by qualified personnel. All modifications to be signed off on this TCP along with certification number.

Approach speed of traffic at beginning of taper	Taper length	Laterals shift	Merge taper
45 or less	15	0	15
46 - 55	15	15	30
56 - 65	30	30	60
66 - 75	N/A	70	115
76 - 85	N/A	80	130
86 - 95	N/A	90	145
96 - 105	N/A	100	160
Greater than 105	N/A	110	180

D = THE SPEED OF TRAFFIC MEASURED IN KM/H
80KM = 80M
70KM = 70M
60KM = 60M
50KM = 50M

TCP designed from TCWS Manual 4.0 & Australian Standard 1742.3

Traffic Logistics do not accept responsibility of this traffic control plan if it is not implemented by Traffic Logistics Pty Ltd

Implemented By

Name -

Cert No. -

Date -

Signed -

Convoy TCP - Page 5 of 9



PRINCES HWY, HELENSBURGH

Trucks Parking

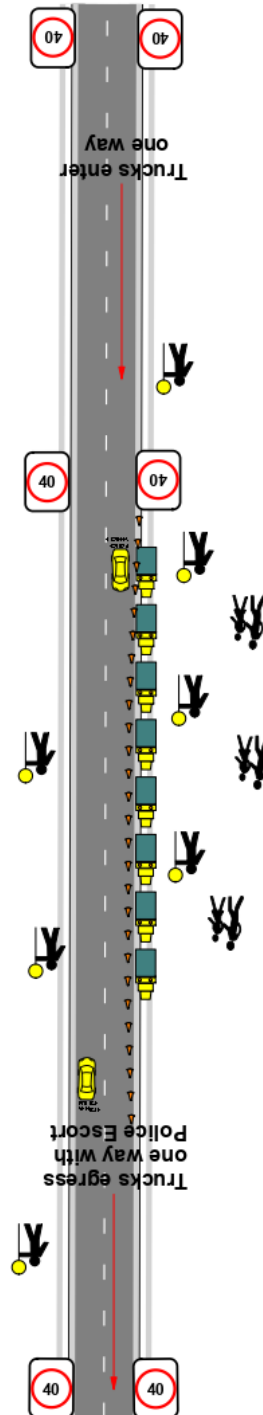
TRAFFIC CONTROL SIGHT SAFETY RULES



1. No pedestrians on carriageway (no exceptions)
2. Vehicles parked single file for access by emergency vehicles
3. Traffic must be slowed to 40 km/ph at all times
4. Trucks as far off shoulders as possible
5. Police and emergency vehicles have right of way at all times

Cover all speed signs replace with 40Km

Walk with trucks to park up as much to the side as you can

Pick up all signs after the last truck even 198fm Signs and bring back to the yard



 <p> Enquiries@raffic-logistics.com.au www.raffic-logistics.com.au Wollongong - 02 4271 4999 Sydney - 02 4548 2200 Newcastle - 02 4050 0336 </p>	Client: Convooy		Designed by: M.Jones			Approximate Traffic control speed of traffic at beginning of stage 450 m/sec 15 15 46-55 15 65-75 N/A 65-75 N/A 80 130 76-95 N/A 96-105 Greater than 105	Late start 0 15 0 30 30 60 115 130 145 160 180	D = THE SPEED OF TRAFFIC MEASURED IN KMH 80KM = 80M EG: 70KM = 70M 60KM = 60M 50KM = 50M TCR designed from TCR Manual 412 Australian Standard TCR 3 Traffic lights do not accept a green phase at the intersection implemented by Traffic Lights Pty Ltd	Name - Cert No - Date - Signed -	Implemented By
	Location: Princess Hwy, Helensburgh		Cert. No: 0033239253							
	REV: A		Signature:							
	Scope Of Works: Trucks Parking		TCR(s) Used as a Guide: 84							
	Top(s) Designed Date: 14.11.19		Top Expire Date: 24.7.22							
	Top Expire Date: 24.7.22		3x TC							

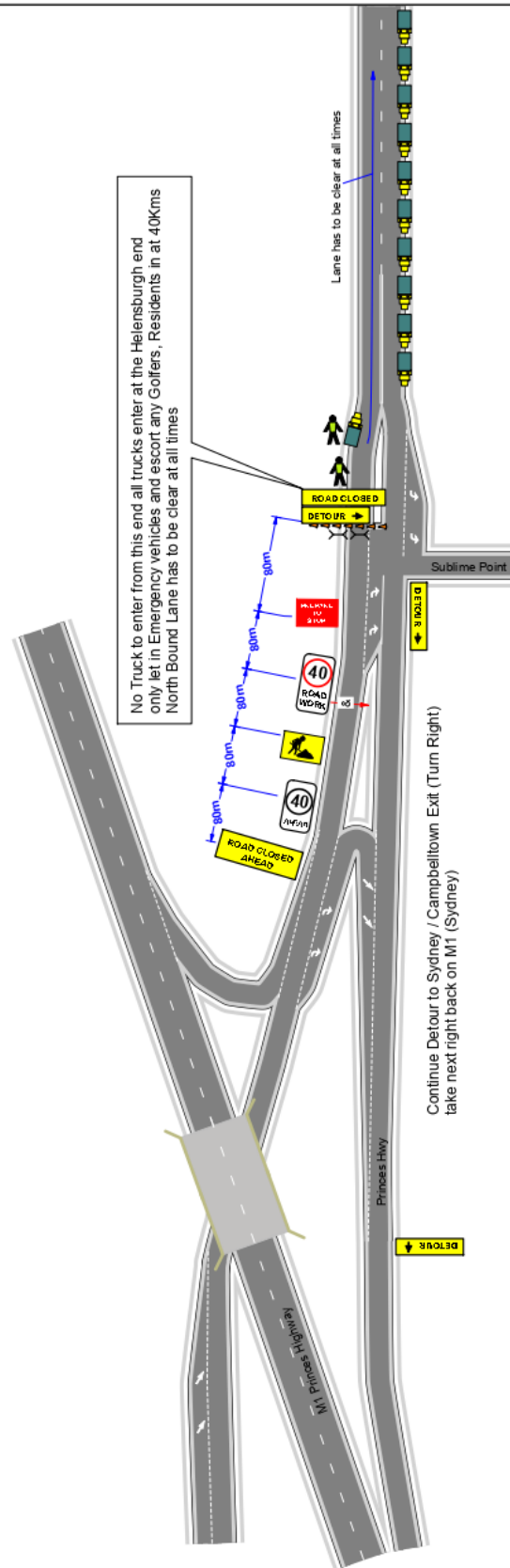
This TCR is to be set and adopted by qualified traffic controllers with minimum current implement Traffic Control Plans (below). Any modifications to this TCR are to be made by signed personnel. All modifications to be signed off on this TCR above with certification number



Convoy TCP - Page 6 of 9

Convoy TCP - Page 7 of 9

PRINCES HWY, MADDENS PLAINS

Southern End



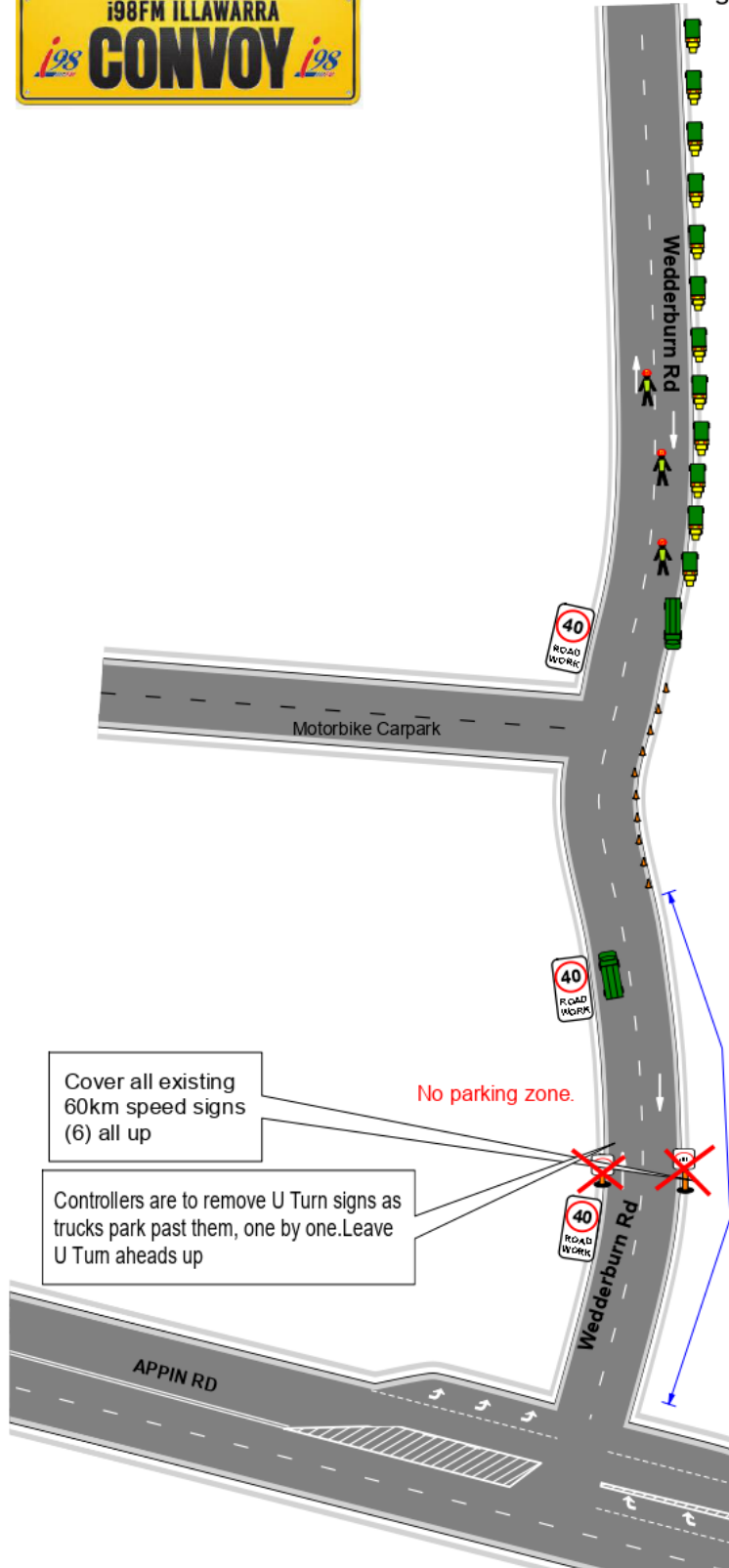
 Email: info@traffic-logistics.com.au Web: www.trafficlogistics.com.au Wollongong - 02 4271 1599 Sydney - 02 4468 2200 Melbourne - 02 4660 0336	Client: Convooy		Designed by: M.Jones			Approximate Traffic control speed of traffic at beginning of stage:	Late start time		D = THE SPEED OF TRAFFIC MEASURED IN KM/H	Implemented By						
	Location: Princess Hwy, Maddens Plains (Sublime Point)						Traffic control stage	Name -								
	Top No: AS-004		REV: A								EG: 70KM - 70M 60KM - 60M 50KM - 50M	Cert No -				
	Scope Of Works: Trucks Parking												TCP designated from Traffic Control Plan (TCLP) Available Standard TACL3	Date -		
	Tcp(s) Used as a Guide: 84														Traffic advice to stop responsibility starts with control unit and implemented by Traffic Logistics Pty Ltd	Signed -
	Top Designed Date: 14.11.19															
	Top Expire Date: 24.7.22		2x TC				Concrete base NIS				150	160	180			
	This TCP is to be setup and packed up by qualified traffic controllers with minimum current Implement Traffic Control Plans (Yellow Card). Any modifications to this TCP is to be made by qualified personnel. All modifications to be signed off on this TCP along with verification number.															

Convoy TCP - Page 8 of 9

Wedderburn Rd, Appin



Lead Trucks Parking



Email: info@traffic-logistics.com.au
Web: www.traffic-logistics.com.au
Wollongong - 02 4271 4999
Sydney - 02 4648 2200
Newcastle - 02 4050 0336

Client: Convoy
Location: Mt Ousley Rd, Mt Ousley
Tcp No: AS-002
REV: A 3x T/C
Scope Of Works: Truck Parking
Tcp(s) Used as a Guide: 84
Tcp Designed Date: 14.11.19
Tcp Expire Date: 24.7.22



TCP IS NOT TO SCALE

Designed by: M. Jones

Cert. No: 0033230253

Signature:

This TCP is to be used by qualified traffic controllers with minimum current in-plant Traffic Control (T/C) (New Caltex) and must be made by qualified personnel. All modifications to be signed off on this TCP along with certification number.

Approximate Speed of traffic at beginning of taper	Lateral shift	Merge taper
45 or less	15	0
46 - 55	15	15
56 - 65	30	30
66 - 75	N/A	60
76 - 85	N/A	70
86 - 95	N/A	80
96 - 105	N/A	90
Greater than 105	N/A	100
		110
		120
		130
		145
		160
		180

D = THE SPEED OF TRAFFIC MEASURED IN KM/H
80KM = 80M
EG: 70KM = 70M
60KM = 60M
50KM = 50M

TCP designed from
TCWS Manual 4.0 &
Australian Standard 1742.3

Traffic Logistics do not accept responsibility of this traffic control plan if it is not implemented by Traffic Logistics Pty Ltd

Implemented By

Name -

Cert No. -

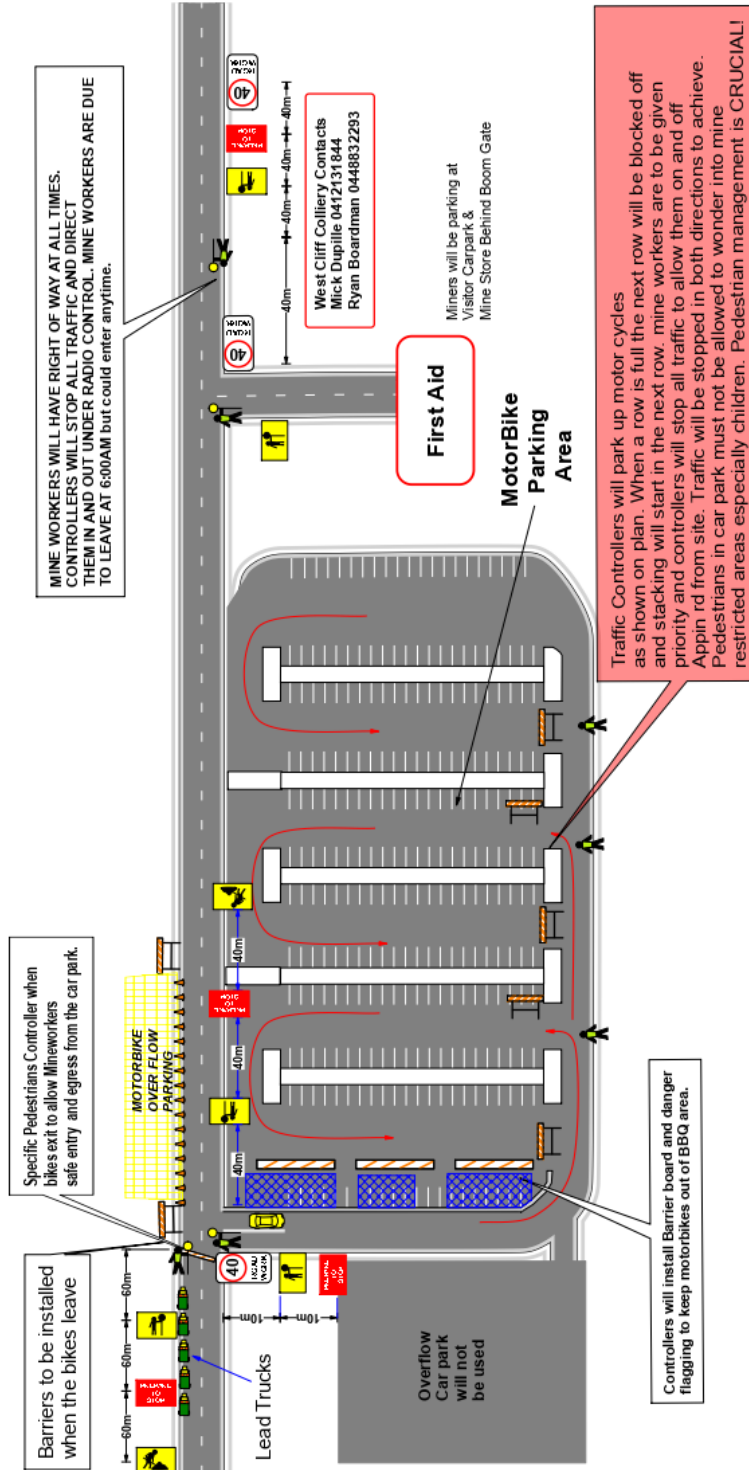
Date -

Signed -

Convoy TCP - Page 9 of 9



Wedderburn Rd, Appin Carpark



Client: Convoy Location: Wedderburn Rd Top No: AS-003 REV: A Scope Of Works: Bikes Parking Top(s) Used as a Guide: 84 Top Designed Date: 14.11.19 Top Expire Date: 24.7.22 7x TC		Designed by: M. Jones Cert. No: 0033239253 Signature: 	App estimate: Traffic control Late at shift/No type - 45 or less 15 0 15 46-55 15 13 30 56-65 30 30 60 66-75 N/A 70 115 76-85 N/A 80 130 86-95 N/A 90 145 96-105 N/A 100 160 Over 106 N/A 110 180	D - THE SPEED OF TRAFFIC MEASURED IN KM/H 80 KM - 80M 70 KM - 70M 60 KM - 60M 50 KM - 50M 40 KM - 40M 30 KM - 30M 20 KM - 20M 10 KM - 10M 5 KM - 5M 2 KM - 2M 1 KM - 1M 500 M - 500M 250 M - 250M 125 M - 125M 62.5 M - 62.5M 31.25 M - 31.25M 15.625 M - 15.625M 7.8125 M - 7.8125M 3.90625 M - 3.90625M 1.953125 M - 1.953125M 0.9765625 M - 0.9765625M 0.48828125 M - 0.48828125M 0.244140625 M - 0.244140625M 0.1220703125 M - 0.1220703125M 0.06103515625 M - 0.06103515625M 0.030517578125 M - 0.030517578125M 0.0152587890625 M - 0.0152587890625M 0.00762939453125 M - 0.00762939453125M 0.003814697265625 M - 0.003814697265625M 0.0019073486328125 M - 0.0019073486328125M 0.00095367431640625 M - 0.00095367431640625M 0.000476837158203125 M - 0.000476837158203125M 0.0002384185791015625 M - 0.0002384185791015625M 0.00011920928955078125 M - 0.00011920928955078125M 0.000059604644775390625 M - 0.000059604644775390625M 0.0000298023223876953125 M - 0.0000298023223876953125M 0.00001490116119384765625 M - 0.00001490116119384765625M 0.000007450580596923828125 M - 0.000007450580596923828125M 0.0000037252902984619140625 M - 0.0000037252902984619140625M 0.00000186264514923095703125 M - 0.00000186264514923095703125M 0.000000931322574615478515625 M - 0.000000931322574615478515625M 0.0000004656612873077392578125 M - 0.0000004656612873077392578125M 0.00000023283064365386962890625 M - 0.00000023283064365386962890625M 0.000000116415321826934814453125 M - 0.000000116415321826934814453125M 0.0000000582076609134674072265625 M - 0.0000000582076609134674072265625M 0.00000002910383045673370361328125 M - 0.00000002910383045673370361328125M 0.000000014551915228366851806640625 M - 0.000000014551915228366851806640625M 0.0000000072759576141834259033203125 M - 0.0000000072759576141834259033203125M 0.00000000363797880709171295166015625 M - 0.00000000363797880709171295166015625M 0.000000001818989403545856475830078125 M - 0.000000001818989403545856475830078125M 0.0000000009094947017729282379150390625 M - 0.0000000009094947017729282379150390625M 0.00000000045474735088646411895751953125 M - 0.00000000045474735088646411895751953125M 0.000000000227373675443232059478759765625 M - 0.000000000227373675443232059478759765625M 0.0000000001136868377216160297393798828125 M - 0.0000000001136868377216160297393798828125M 0.00000000005684341886080801486968994140625 M - 0.00000000005684341886080801486968994140625M 0.000000000028421709430404007434844970703125 M - 0.000000000028421709430404007434844970703125M 0.0000000000142108547152020037174224853515625 M - 0.0000000000142108547152020037174224853515625M 0.00000000000710542735760100185871124267578125 M - 0.00000000000710542735760100185871124267578125M 0.000000000003552713678800500929355621337890625 M - 0.000000000003552713678800500929355621337890625M 0.0000000000017763568394002504646778106689453125 M - 0.0000000000017763568394002504646778106689453125M 0.00000000000088817841970012523233890533447265625 M - 0.00000000000088817841970012523233890533447265625M 0.000000000000444089209850062616169452667236328125 M - 0.000000000000444089209850062616169452667236328125M 0.0000000000002220446049250313080847263336181640625 M - 0.0000000000002220446049250313080847263336181640625M 0.00000000000011102230246251564404236316680908203125 M - 0.00000000000011102230246251564404236316680908203125M 0.000000000000055511151231257822021181583404541015625 M - 0.000000000000055511151231257822021181583404541015625M 0.0000000000000277555756156289110105907917022705078125 M - 0.0000000000000277555756156289110105907917022705078125M 0.00000000000001387778780781445550529539585113535390625 M - 0.00000000000001387778780781445550529539585113535390625M 0.0000000000000069388939039072277526476979255676767578125 M - 0.0000000000000069388939039072277526476979255676767578125M 0.00000000000000346944695195361387632384896278383837890625 M - 0.00000000000000346944695195361387632384896278383837890625M 0.000000000000001734723475976806938161924481391919189453125 M - 0.000000000000001734723475976806938161924481391919189453125M 0.0000000000000008673617379884034690809622406959595947265625 M - 0.0000000000000008673617379884034690809622406959595947265625M 0.00000000000000043368086899420173454048112034797979736328125 M - 0.00000000000000043368086899420173454048112034797979736328125M 0.000000000000000216840434497100867270240560173989898681640625 M - 0.000000000000000216840434497100867270240560173989898681640625M 0.0000000000000001084202172485504336351202800869899493408203125 M - 0.0000000000000001084202172485504336351202800869899493408203125M 0.00000000000000005421010862427521681756014004349497467041015625 M - 0.00000000000000005421010862427521681756014004349497467041015625M 0.000000000000000027105054312137608408780070021747487335205078125 M - 0.000000000000000027105054312137608408780070021747487335205078125M 0.00000000000000001355252715606880420439003501087374366761025390625 M - 0.00000000000000001355252715606880420439003501087374366761025390625M 0.00000000000000000677626357803440210219501750543687183380511953125 M - 0.00000000000000000677626357803440210219501750543687183380511953125M 0.00000000000000000338813178901720105109750087526839366690259765625 M - 0.00000000000000000338813178901720105109750087526839366690259765625M 0.000000000000000001694065894508600525548750043764196833451298828125 M - 0.000000000000000001694065894508600525548750043764196833451298828125M 0.00000000000000000084703294725430026277437500218709841672564944140625 M - 0.00000000000000000084703294725430026277437500218709841672564944140625M 0.000000000000000000423516473627150131387187500108549208362824720703125 M - 0.000000000000000000423516473627150131387187500108549208362824720703125M 0.0000000000000000002117582368135750656935937500054296041814123603515625 M - 0.0000000000000000002117582368135750656935937500054296041814123603515625M 0.00000000000000000010587911840678753284677968750002714802070618017578125 M - 0.00000000000000000010587911840678753284677968750002714802070618017578125M 0.000000000000000000052939559203393766423389843750001357401035309087890625 M - 0.000000000000000000052939559203393766423389843750001357401035309087890625M 0.0000000000000000000264697796016968832116699218750000678700517545439453125 M - 0.0000000000000000000264697796016968832116699218750000678700517545439453125M 0.00000000000000000001323488980084844160583496093750000339350258772202265625 M - 0.00000000000000000001323488980084844160583496093750000339350258772202265625M 0.000000000000000000006617444900424220802917480468750000169675129386111328125 M - 0.000000000000000000006617444900424220802917480468750000169675129386111328125M 0.00000000000000000000330872245021211040145874023437500000848375646930556640625 M - 0.00000000000000000000330872245021211040145874023437500000848375646930556640625M 0.000000000000000000001654361225106055200729370117187500000424187823467783203125 M - 0.000000000000000000001654361225106055200729370117187500000424187823467783203125M 0.0000000000000000000008271806125530276003646850585937500002120939117338916015625 M - 0.0000000000000000000008271806125530276003646850585937500002120939117338916015625M 0.00000000000000000000041359030627651380018234252929687500001060469558669580078125 M - 0.00000000000000000000041359030627651380018234252929687500001060469558669580078125M 0.000000000000000000000206795153138269400091171264648437500000530234779347925390625 M - 0.000000000000000000000206795153138269400091171264648437500000530234779347925390625M 0.0000000000000000000001033975765691347000455856323242187500000265117389739626953125 M - 0.0000000000000000000001033975765691347000455856323242187500000265117389739626953125M 0.00000000000000000000005169878828456735002279281616210937500000132558694869634765625 M - 0.00000000000000000000005169878828456735002279281616210937500000132558694869634765625M 0.000000000000000000000025849394142283675001139640581054687500000662793474328125 M - 0.000000000000000000000025849394142283675001139640581054687500000662793474328125M 0.000000000000000000000012924697071141687500056982240272734375000003313967371640625 M - 0.000000000000000000000012924697071141687500056982240272734375000003313967371640625M 0.00000000000000000000000646234853557084375002849112013636718750000016569836858203125 M - 0.00000000000000000000000646234853557084375002849112013636718750000016569836858203125M 0.000000000000000000000003231174267785421875001424556100680937500000082849184291015625 M - 0.000000000000000000000003231174267785421875001424556100680937500000082849184291015625M 0.000000000000000000000001615587133892710937500071227800340468750000041424592145578125 M - 0.000000000000000000000001615587133892710937500071227800340468750000041424592145578125M 0.0000000000000000000000008077935669463554687500035613901702343750000207122960727890625 M - 0.0000000000000000000000008077935669463554687500035613901702343750000207122960727890625M 0.000000000000000000000000403896783473177734375000178069508517187500001035614803639453125 M - 0.000000000000000000000000403896783473177734375000178069508517187500001035614803639453125M 0.0000000000000000000000002019483917365888671875000089034754255937500005178074018197265625 M - 0.0000000000000000000000002019483917365888671875000089034754255937500005178074018197265625M 0.0000000000000000000000001009741958682944335937500004451697711279687500025890370090986328125 M - 0.0000000000000000000000001009741958682944335937500004451697711279687500025890370090986328125M 0.0000000000000000000000000504870979341472216968750000222584885563984375000129451850454931640625 M - 0.0000000000000000000000000504870979341472216968750000222584885563984375000129451850454931640625M 0.00000000000000000000000002524354896707361084843750001112924427819921875000647259252274670703125 M - 0.00000000000000000000000002524354896707361084843750001112924427819921875000647259252274670703125M 0.000000000000000000000000012621774483536805424218750000556462213909609375000323629626133353515625 M - 0.000000000000000000000000012621774483536805424218750000556462213909609375000323629626133353515625M 0.0000000000000000000000000063108872417684027121093750000278231106950468750001618148130666767578125 M - 0.0000000000000000000000000063108872417684027121093750000278231106950468750001618148130666767578125M 0.00000000000000000000000000315544362088420135605468750000139115553475343750008090740653333837890625 M - 0.00000000000000000000000000315544362088420135605468750000139115553475343750008090740653333837890625M 0.000000000000000000000000001577721810442100678027343750000695577767376718750004045370326669189453125 M - 0.000000000000000000000000001577721810442100678027343750000695577767376718750004045370326669189453125M 0.000000000000000000000000000788860905221050339013671875000034778888368859375000202268516333494765625 M - 0.000000000000000000000000000788860905221050339013671875000034778888368859375000202268516333494765625M 0.0000000000000000000000000003944304526105251695068359375000173894441844296875000101134258166674765625 M - 0.000000000
---	--	--	--	---

Australia Day - Page 1 of 4

TRAFFIC CONTROL PLAN FOR AUSTRALIA DAY CLOSURE - BOURKE ST & CLIFF RD

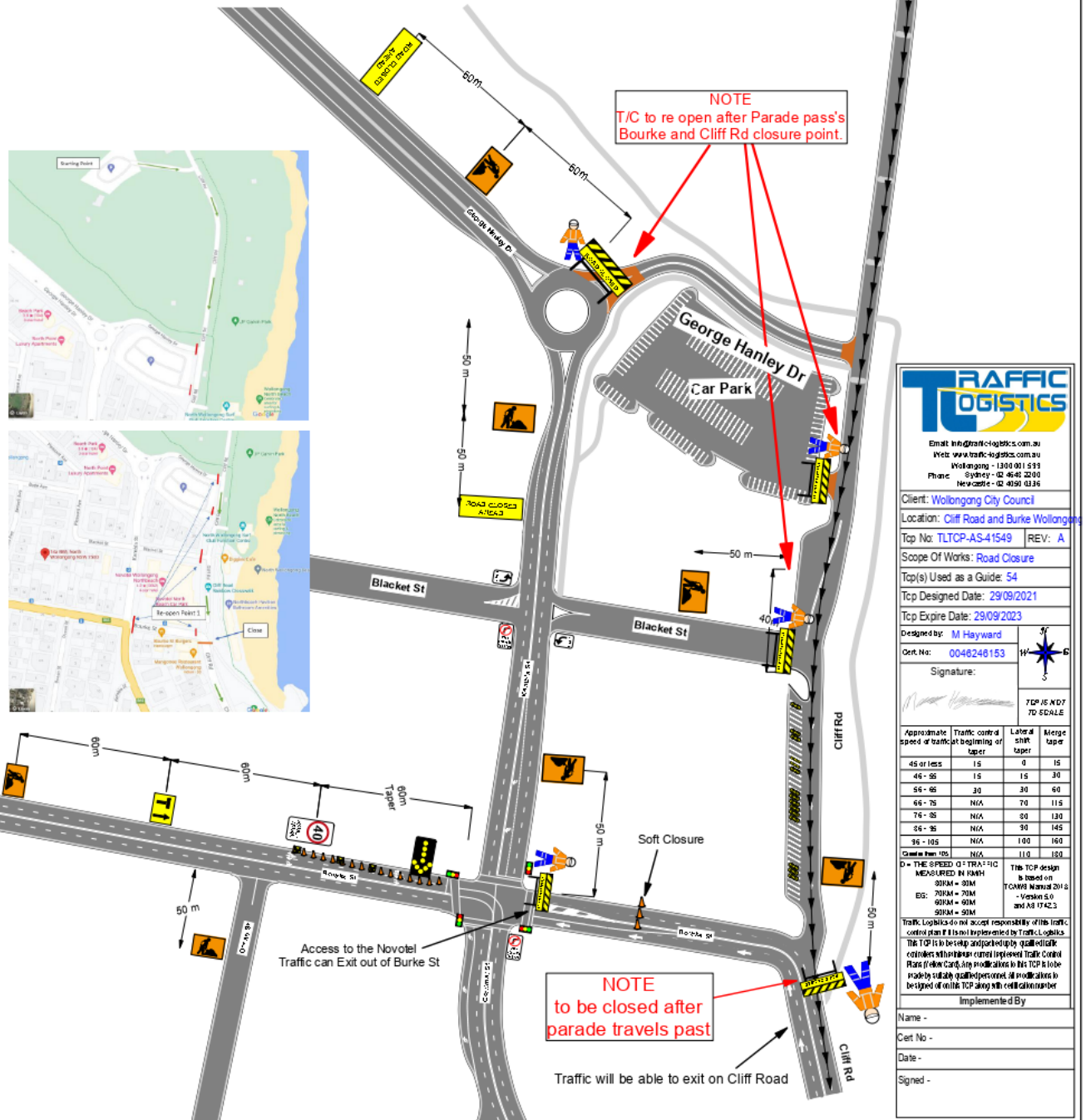
Traffic Controllers to close roads
at 5:00 PM and open again at 5:30pm

Advise drivers accessing the precinct
of 5km/hour ONLY speed limit

Access Passes:
Are to be worn by owner or displayed
on vehicle

Start
of Parade

Stuart Park



Australia Day - Page 3 of 4

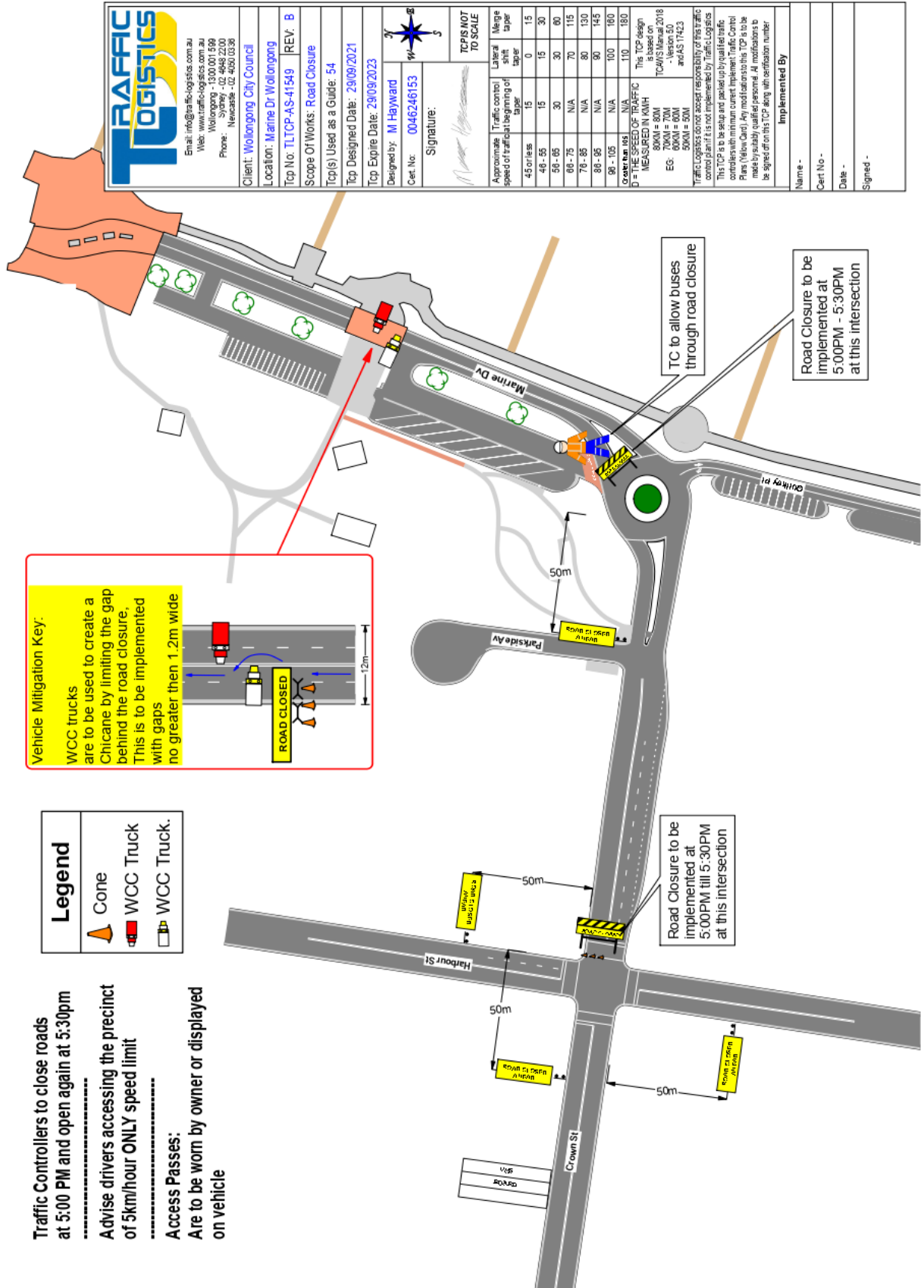
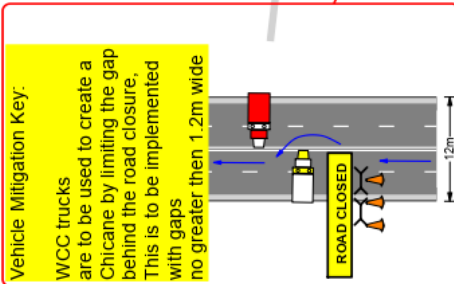
TRAFFIC CONTROL PLAN FOR AUSTRALIA DAY - Parade

Traffic Controllers to close roads
at 5:00 PM and open again at 5:30pm

Advise drivers accessing the precinct
of 5km/hour ONLY speed limit

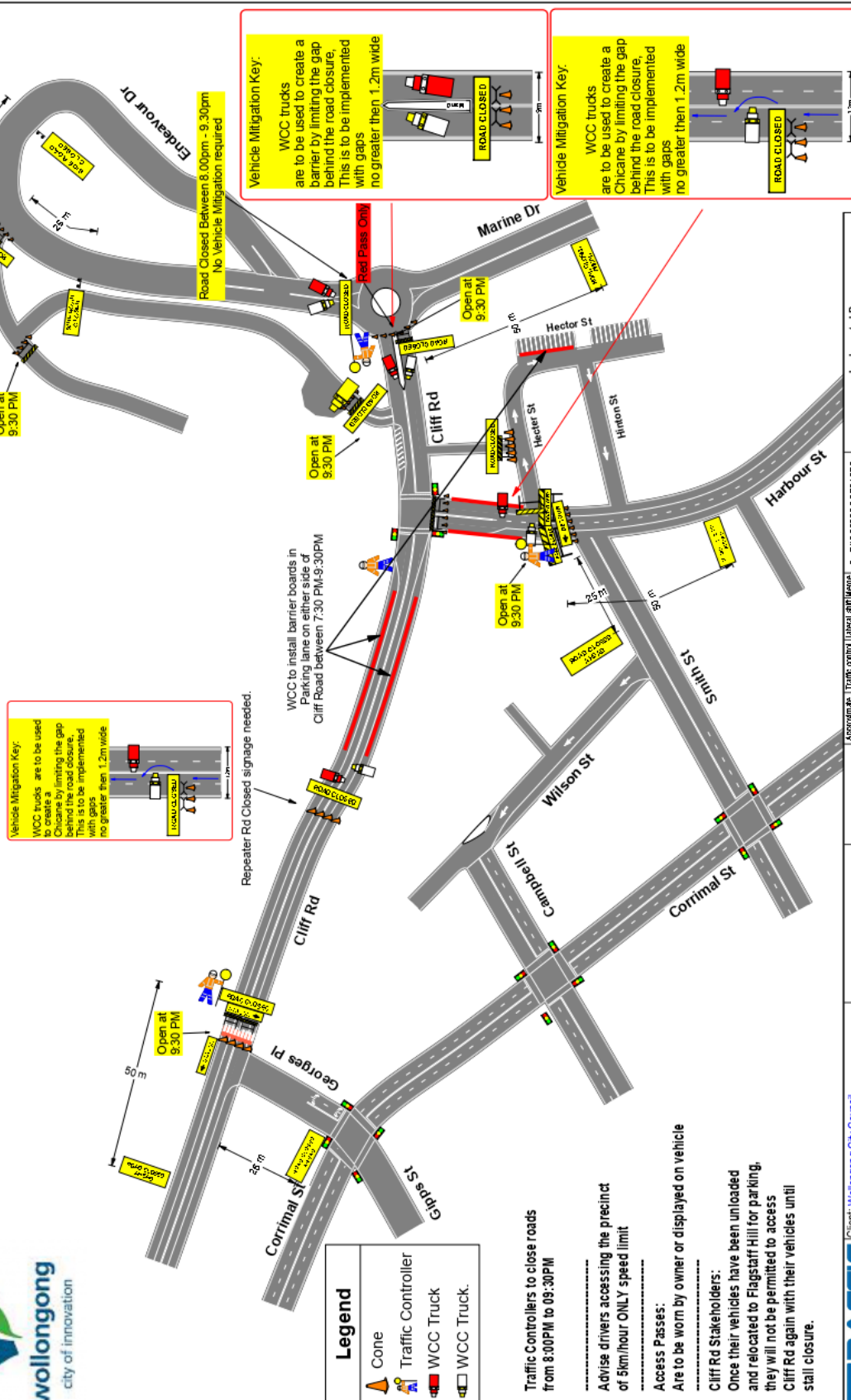
Access Passes:
Are to be worn by owner or displayed
on vehicle

Legend	
	Cone
	WCC Truck
	WCC Truck

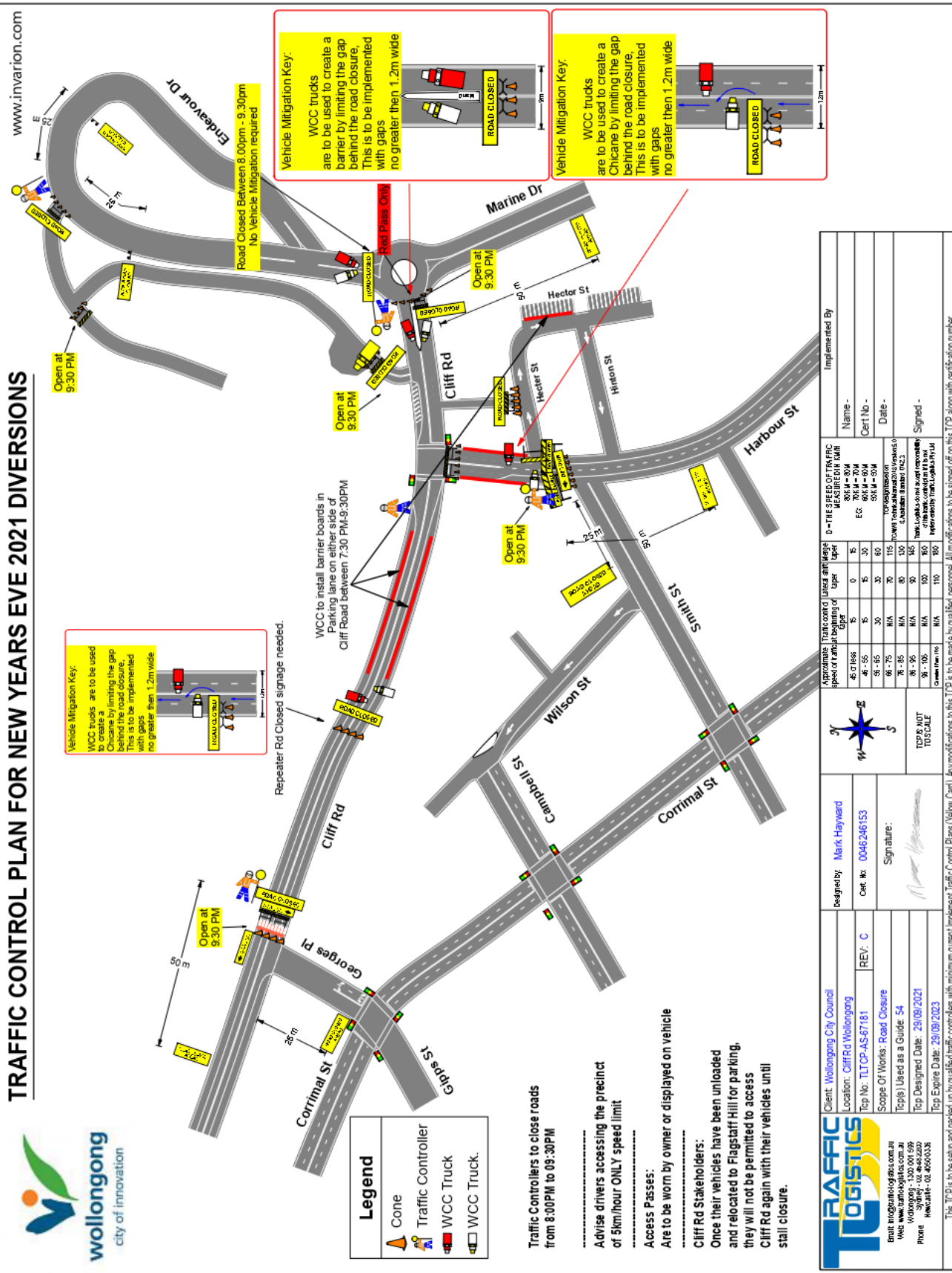


Australia Day - Page 4 of 4

TRAFFIC CONTROL PLAN FOR Australia Day 2022 DIVERSIONS



Client: Wollongong City Council		Designed by: Mark Hayward		Implemented By:	
Location: Cliff Rd Wollongong		Cert. No: 0046246153		Name -	
Top No: TLTCP-AS-67181		REV: C		Cert No -	
Scope Of Works: Road Closure		Signature:		Date -	
Top(s) Used as a Guide: 54		Top Designed Date: 29/09/2021		Signed -	
Top Expire Date: 29/09/2023		This TCP is to be set up and packed up by qualified traffic controllers with minimum current Implement Traffic Control Plans (Yellow Card). Any modifications to this TCP is to be made by qualified personnel. All modifications to be signed off on this TCP along with certification number			



Australia Day Aquathon - Page 2 of 2

www.invarion.com

REV	REVISION DESCRIPTION	TGS PLAN #	Aquathon 002	CLIENT:	DESIGNED BY	APPROVED BY	IMPLEMENTED BY
00	SUPPLIED TO CLIENT			SUMMIT TREES	S. KOLIMI	S. KOLIMI	N. MITCHELL
01				ROL REQUIRED			
02				ROAD SPEED(S)			

© 2021 Cocqlo

DESIGNED BY	APPROVED BY	IMPLEMENTED BY
S. KOLIMI	S. KOLIMI	N. MITCHELL
SIGNATURE	SIGNATURE	SIGNATURE
DATE	DATE	DATE
CERTIFICATE #	CERTIFICATE #	CERTIFICATE #

Y ☐ N ☒ X

50 KM/HR

29.09.2021

TCT0054020

11/11/2021

17/09/2021

17/09/2021

17/09/2021

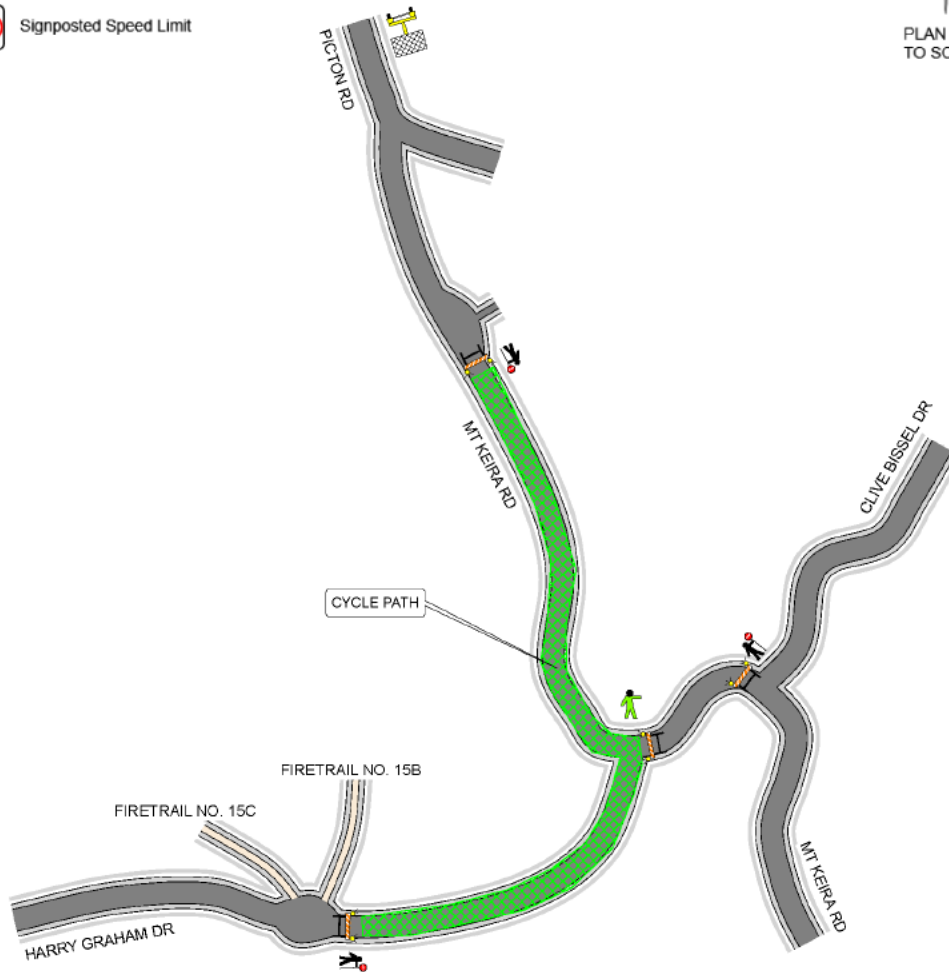
Illawarra Cycle Club - Page 1 of 4

TRAFFIC MANAGEMENT PLAN

Appendix C – Traffic Control Plans (TCP's)



TCP AS230821-01 Rev.01



Note 1:
Traffic control signage and devices shall be installed by suitably qualified and ticketed, RMS authorised personnel only. All signs and equipment shall COMPLY Australian Standard AS1742.3:2019 Manual of Uniform Traffic Control Devices Part 3: Traffic Control for Works on Roads.

Implemented By:
Amended By:
Ticket #:
Date:
Signature:

Date	Rev	Comments	Drawn By:
15/07/20	00	Initial Design	Allan Smith
23/08/21	01	Annual Review	TCT 0003467
	02		Checked By: Steven Murray
			TCT 0070603

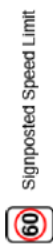
TMP – V1.0

Illawarra Cycle Club - Page 2 of 4

TRAFFIC MANAGEMENT PLAN



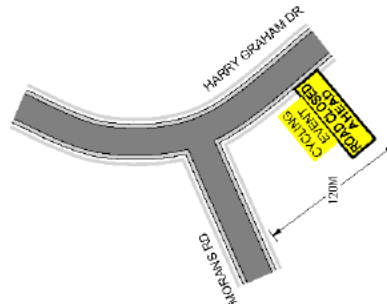
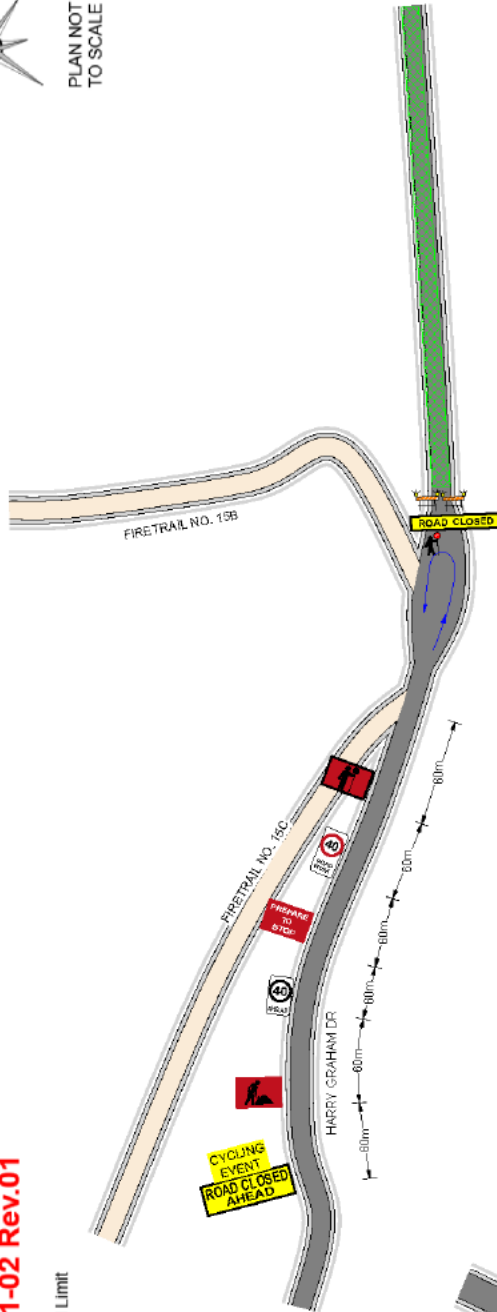
TCP AS230821-02 Rev.01



Signposted Speed Limit



PLAN NOT
TO SCALE



Implemented By:
Amended By:
Ticket #:
Date:
Signature:

Note 1:
Traffic control signage and devices shall be installed by suitably qualified and ticketed, RMS authorised personnel only. All signs and equipment shall COMPLY Australian Standard AS1742.3.2019 Manual of Uniform Traffic Control Devices Part 3: Traffic Control for Works on Roads.

TCP #:	Client:	Description of the works:	Date	Rev	Comments
AS-230821-02	Wollongong Cycle Club	Wollongong Cycle Club require planned road closures of Harry Graham Drive and part of Mount Keira Road during scheduled road cycling race events. This TGS shows the road closure point and advance warning signage approaching the closure on Harry Graham Dr, Mount Kembla.	15/07/20	00	Initial Design
	Road Name: Harry Graham Drive		23/08/21	01	Annual Review
	Suburb: Mount Kembla			02	

Drawn By:
Allan Smith
TCT 0003407
Checked By: Steven Murray
TCT 0070603

Illawarra Cycle Club - Page 4 of 4

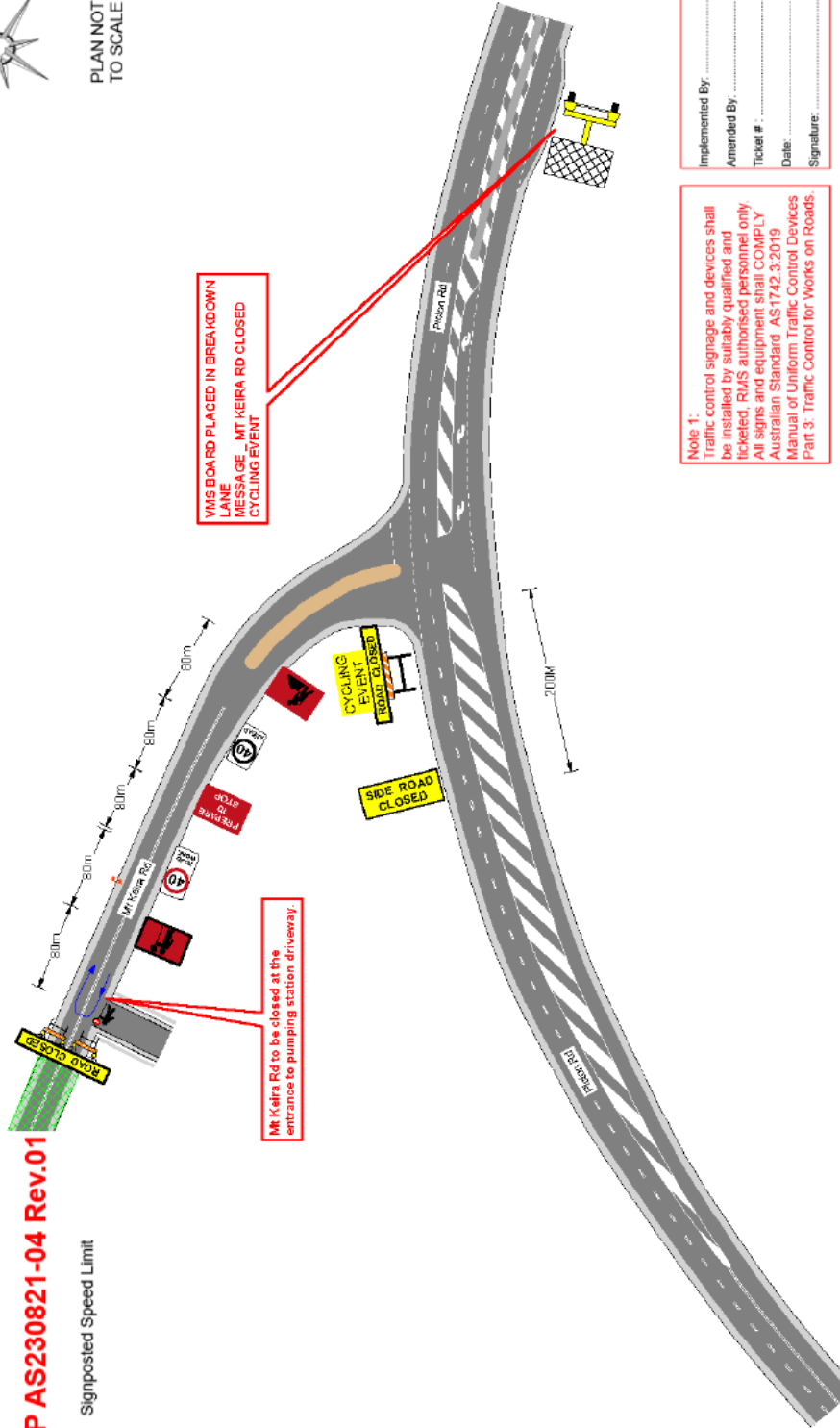
TRAFFIC MANAGEMENT PLAN



TCP AS230821-04 Rev.01



PLAN NOT
TO SCALE



VMS BOA RD PLACED IN BREAKDOWN
LANE MT KEIRA RD CLOSED
CYCLING EVENT



Mt Keira Rd to be closed at the
entrance to pumping station driveway.

Implemented By:
Amended By:
Ticket #:
Date:
Signature:

Note 1:
Traffic control signage and devices shall
be installed by suitably qualified and
ticketed, RMS authorised personnel only.
All signs and equipment shall COMPLY
Australian Standard AS1742.3:2019
Manual of Uniform Traffic Control Devices
Part 3: Traffic Control for Works on Roads.

TCP #:	AS-230821-04	Client:	Wollongong Cycle Club	Date:	15/07/20	Rev	00	Comments	Initial Design
Road Name:	Mount Keira Road approximately 500m south of Picton Road				23/08/21	01	Annual Review		
Suburb:	Cataract					02		Checked By:	Steven Murray
									TCT 0070603



IF REQUIRED		Author : P. DELLOREANCE PREPARED BY Philip Delloreance CERT. NO. 326907297 TMP No: ITCGEN-148	Name: Date: Signed: Cont. No:	Comments: 1. TYPED and signed as a witness only. 2. All signage is to be removed on completion of the works. 3. All signage is to be removed on completion of the works. 4. Traffic Controllers are to manage pedestrians as well. This plan is in accordance with AS 1743 Traffic Control Devices at work sites (2004) and	PROJECT  Endeavour Energy	80KM = 80M 70KM = 70M 60KM = 60M 50KM = 50M EG: TRAFFIC CONTROL AT WORK SITE MANUAL	PEDESTRIAN SIGNS TO BE INSTALLED WHERE APPLICABLE IF REQUIRED	<div>← REGISTERED</div> <div>REGISTERED →</div>	TCP 54 USING A GUIDE

Signature	Witnessing	Witnessed	2023 Expiry Date: 06/06/2022	Signature	Witness Signature
<p>Traffic Logistics does not accept responsibility of this Traffic Control Guidance Scheme if it isn't implemented by Traffic Logistics Pty Ltd. This Traffic Control Guidance Scheme must be setup and packed up by qualified personnel only with a minimum current Implement Traffic Control Plans qualifications. Signs must be set up in accordance with Traffic Control At Work Sites Manual 2020 version 6.0 and Australian standards 1742.3 Any Modifications to this Traffic Control Guidance Scheme must only be made by a qualified person with a current Prepare Work Zone Traffic Management Plan qualification.</p>					

