

WOLLONGONG CITY COUNCIL

# Traffic Committee Agenda

11 July 2023



**TUESDAY 11 JULY 2023**  
9.15 AM

## PURPOSE OF MEETING

**The City of Wollongong Traffic Committee** is not a Committee of Wollongong City Council however a Technical Committee of Transport for NSW (TfNSW). The Committee operates under the authority conferred to Council by TfNSW under the Transport Administration Act 1988. Council has resolved to manage the Traffic Committee under a Charter which sets out the membership, timelines for the preparation of the Agenda and the distribution of Minutes, in accordance with TfNSW (previously RMS) document 'A guide to the delegation to councils for the regulation of traffic' (including the operation of Traffic Committees).

Council has been delegated certain powers, from TfNSW, regarding traffic matters upon its local roads. A condition of this delegation is that the General Manager will approve the minutes under delegated authority.

**There are four permanent members of the Traffic Committee, *each of whom has a single vote only.***

- The members are representatives of the NSW Police Force, Transport for NSW, the Local State Member of Parliament (for the location of the issue to be voted upon), and a representative of Wollongong City Council.
- If TfNSW or NSW Police Force disagrees with any Traffic Committee recommendation, that member may lodge an appeal with the Regional Traffic Committee for determination. The appeal must be lodged in writing within 14 days of the Minutes being published on the Council's website. Any action relative to any issue under appeal must cease until the matter is determined. The Regional Traffic Committee is chaired by an independent chairperson and submissions and representations are welcomed from all interested parties.

# INDEX

ITEM	PAGE NO.
1	STANDING AGENDA ITEMS ..... 4
1.1	Welcome.....4
1.2	Acknowledgement of Country .....4
1.3	Declarations of Interest .....4
1.4	Apologies.....4
1.5	Confirmation of Minutes Arising from Previous Minutes .....4
1.6	Business Arising from Previous Meeting.....4
2	REGULATION OF TRAFFIC ..... 4
2.1	BULLI TOPS, Princes Highway – Ward 1 – Heathcote Electorate - i98FM Illawarra Convoy.....4
2.2	OTFORD, Station, Beaumont and Fanshawe Roads – Ward 1 – Heathcote Electorate - Coastal Classic 30km Trail Run .....4
2.3	WOLLONGONG, WIN Entertainment Centre – Ward 2 – Wollongong Electorate – Southern Stars .....5
3	DESIGN MATTERS.....26
3.1	KEMBLA HEIGHTS, Harry Graham Drive - Ward 2 – Keira Electorate - Illawarra Mountain Bike Project Sign & Line Plans .....26
4	UPDATES TO PREVIOUS AGENDA ITEMS .....35
4.1	WOLLONGONG, Crown Street and Queens Parade – Ward 2 – Wollongong Electorate - Tower Crane Installation (Item 3.2 – 13 June 2023) .....35
5	DOB IN A HOON (NSW POLICE REFERRALS) .....38

## 1 STANDING AGENDA ITEMS

### 1.1 Welcome

### 1.2 Acknowledgement of Country

*"We pay our respects to and acknowledge the traditional custodians of Dharawal Country, the land on which we meet, and pay our respects to Elders past, present and those emerging. We also extend our respects to Aboriginal and Torres Strait Islander people present here today."*

### 1.3 Declarations of Interest

### 1.4 Apologies

### 1.5 Confirmation of Minutes Arising from Previous Minutes

### 1.6 Business Arising from Previous Meeting

## 2 REGULATION OF TRAFFIC

### 2.1 BULLI TOPS, Princes Highway – Ward 1 – Heathcote Electorate - i98FM Illawarra Convoy

#### BACKGROUND

The i98FM Illawarra Convoy is one of the largest regional one-day fundraisers in the country with funds raised providing direct support to individuals and families affected by potentially life-threatening medical conditions, charities that work with these people, and local hospitals. Convoy has been a successful event for several years. The proposed road impacts and closures are similar to previous Convoy events. The main road closure is the Old Princes Highway from Sublime Point at Madden Plains to the M1 northbound ramp, Helensburgh. There will be traffic control at the following points:

- Wedderburn Road, (Appin Mine for Lead Trucks and Bikes)
- Old Princes Highway, Darkes Forest, Closure (Trucks and Vehicles)
- Old Mount Ousley Road intersection

The closure time will be on Sunday 19 November 2023, from 4.30am to 11.30am.

#### CONSULTATION

Consultation with affected property owners is a condition of approval for this event. Convoy organisers will need to work closely with NSW Police to ensure that the event is safe for the participants and the general public.

#### PROPOSAL

The road closures be approved subject to the submitted Traffic Control Plans and [Council's Standard Conditions for Road Closures](#).

### 2.2 OTFORD, Station, Beaumont and Fanshawe Roads – Ward 1 – Heathcote Electorate - Coastal Classic 30km Trail Run

#### BACKGROUND

The event applicant for the annual Coastal Classic Trail run have applied to close Station, Beaumont and Fanshawe Roads in Otford, on Saturday 2 September 2023 between 7.30am and 9.30am. This event was previously approved by the Traffic Committee at its meeting of 1 June 2021 and 31 May 2022.

The event will start at Otford Public School and arrangements have been made for participants to register at the school as in previous years. The event will finish at Bundeena RSL. Based on previous years' experience, the organisers have a good relationship with the Otford community and this event will have minimal effect on the wider community in terms of the road network.

Signage will be placed on Domville Road to advise of the Station Road closure which will be managed by marshals. Access for emergency services will be available at all times. The applicant is also arranging for permission to cross Lady Wakehurst Drive under traffic control, from Transport for NSW through an ROL. Runners will be released every 5 seconds and the crossing of Lady Wakehurst Drive can be managed on a hold and release pattern. The event has minimal impact on the road network as it is only the initial portion of the race which is on road.

All runners are encouraged to use public transport to access the event and there will be additional carriages for relevant trains.

## CONSULTATION

All local residents to be notified via local community groups/message boards include the Otford Train Station, Otford Public School, and Otford RFS. Additional letter box drops to placed approximately 3 weeks prior to the event along Station Road, Domville Road, Beaumont Road, Fanshawe Road and Lady Wakehurst Drive.

## PROPOSAL

The road closures be approved subject to the submitted Traffic Control Plans and [Council's Standard Conditions for Road Closures](#).

### 2.3 WOLLONGONG, WIN Entertainment Centre – Ward 2 – Wollongong Electorate – Southern Stars

#### BACKGROUND

The WIN Entertainment Centre is hosting the annual Southern Stars music festival on 25 and 26 August 2023, with rehearsals on 23 and 24 August 2023. Southern Stars is one of the Department of Education's premier creative events showcasing the abilities of more than 3,000 students from across NSW. The arena style show features student vocalists, dancers, performers, choir, and live orchestra. It is expected that the crowd size will be approximately 2,500 to 3,000 per performance, with a total of approximately 12,000 across the four shows. There are 2750 registered performers.

There are two TGS plans as per previous years and road closures will take place on the following roads:

- TGS A – Crown Street and Marine Drive between Harbour Street and Endeavour Drive
- TGS B – Crown Street between Harbour Street and Marine Drive

Buses will be able to drive through the closure under traffic control. NSW Police have been engaged as user-pay to assist with safe operation of the road closure.

A summary of the implementation of traffic control is provided below:

<b>Wednesday 23 August 2023</b>	<b>7am-5pm (Arriving Rehearsal)</b> <ul style="list-style-type: none"> <li>• Approx. 2000 students arrive for technical rehearsal; students arrive by public transportation to drop off point on Crown Street frontage of Win Entertainment Centre (WEC).</li> <li>• Two traffic controllers present</li> <li>• Students dropped off on Crown Street and Harbour Street; signage changed from 15minutes to Bus Zone</li> </ul> <b>5pm to 7.30pm (Departing Rehearsal)</b> <ul style="list-style-type: none"> <li>• Most performing students collected at 3pm with some collected at 7pm.</li> <li>• Crown and Harbour Street signage changed from 15minutes to Bus Zone</li> </ul>
<b>Thursday 24 August 2023</b>	<b>7am to 1.45pm (Arriving Rehearsal)</b> <ul style="list-style-type: none"> <li>• Approx. 2750 students arrive for technical rehearsal; students arrive by public transportation to drop off point on Crown Street frontage of Win Entertainment Centre (WEC).</li> <li>• Two traffic controllers present</li> <li>• Crown Street and Harbour Street signage changed from 15minutes to Bus Zone</li> <li>• Quilkey Place closed</li> </ul> <b>1.45pm to 6.30pm (Leaving Rehearsal) – TGS B in place</b> <ul style="list-style-type: none"> <li>• Performing students to be collected by the venue from 6pm</li> <li>• TGS B in effect with NSW Police to oversee and assist</li> <li>• Crown Street and Harbour Street signage changed from 15minutes to Bus Zone</li> </ul>

	<ul style="list-style-type: none"> <li>High school students to be collected from Harbour Street (outside St Mary's), Primary School students to be collected outside the WEC (Crown and Harbour Street)</li> </ul>
<b>Friday</b> <b>25 August 2023</b>	<p><b>7.30am-8.30am (Arriving Show 1)</b></p> <ul style="list-style-type: none"> <li>Approx. 2750 students arrive for Show 1, students arrive by public transportation to drop off point on Crown Street frontage of Win Entertainment Centre (WEC).</li> <li>Crown and Harbour Street signage changed from 15minutes to Bus Zone</li> <li>Two traffic controllers present</li> </ul> <p><b>8.30am-10.30am (Show 1 Arrival of Patrons) – TGS A</b></p> <ul style="list-style-type: none"> <li>Traffic Control Plan A in effect</li> <li>Another 2500 audience members arrive as the audience following students arrival</li> <li>Crown Street signage and Harbour Street signage changed from 15minutes to Bus Zone</li> </ul> <p><b>12.30pm – 2pm (Show 1 Departure) – TGS A</b></p> <ul style="list-style-type: none"> <li>Traffic Control Plan A in effect</li> <li>High school students to be collected from Harbour Street (outside St Marys), Primary School students to be collected outside the WEC (Crown and Harbour Street)</li> </ul> <p><b>5.30pm – 7pm (Show 2 Cast and Patron Arrival) – TGS B</b></p> <ul style="list-style-type: none"> <li>Traffic Control Plan (B) in effect</li> <li>Harbour Street signage changed from 15minutes to Bus Zone</li> <li>Students arrive and dropped off Crown and Harbour Street outside WEC</li> </ul> <p><b>9.45pm – 11pm (Show 2 Departure) – TGS B</b></p> <ul style="list-style-type: none"> <li>Approx 3000 people to leave the venue</li> <li>Traffic Control Plan (B) in effect</li> <li>Crown Street and Harbour Street signage changed from 15minutes to Bus Zone</li> <li>High school students to be collected from Harbour Street (outside St Mary's), Primary School students to be collected outside the WEC (Crown and Harbour Street)</li> </ul>
<b>Saturday</b> <b>26 August 2023</b>	<p><b>11.30am – 1pm (Show 3 – Arrival of Cast and Patrons) – TGS B</b></p> <ul style="list-style-type: none"> <li>Cast and Patrons arrive</li> <li>Traffic Control Plan (B) in effect</li> <li>Crown Street signage to Bus Zone and Harbour Street signage changed from 15minutes to Bus Zone</li> </ul> <p><b>3.45pm – 6pm (Show 3 – Departure of cast and patrons) – TGS B</b></p> <ul style="list-style-type: none"> <li>Approx 3000 people depart from the venue</li> <li>Traffic Control Plan (B) in effect</li> <li>Crown Street and Harbour Street signage changed from 15minutes to Bus Zone</li> </ul> <p><b>6pm-7pm (Show 4 Arrival of Cast and Patrons) -TGS B</b></p> <ul style="list-style-type: none"> <li>Traffic Control B in effect</li> <li>Crown and Harbour Street signage change from 15minutes to Bus Zone</li> </ul> <p><b>9.45pm – 11pm (Show 4 Departure) – TGS B</b></p> <ul style="list-style-type: none"> <li>Traffic Control Plan (B) in effect</li> <li>Approx 3000 depart from the venue</li> <li>Crown and Harbour Street signage changed from 15minutes to Bus Zone</li> <li>High school students to be collected from Harbour Street (outside St Marys), Primary School students to be collected outside the WEC (Crown and Harbour Street)</li> </ul>

## CONSULTATION

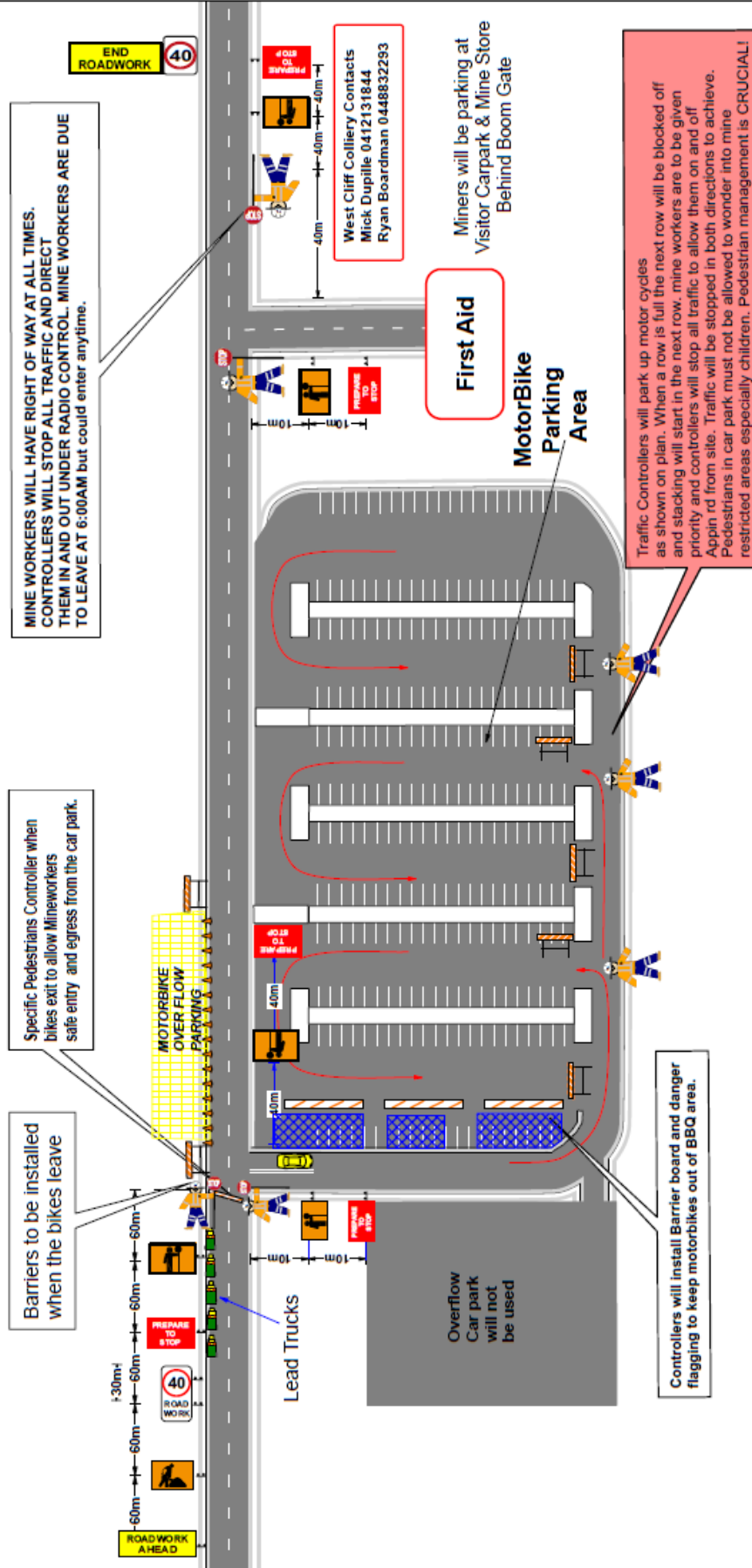
Consultation with affected residents and businesses is a condition of approval for this road closure.

## PROPOSAL

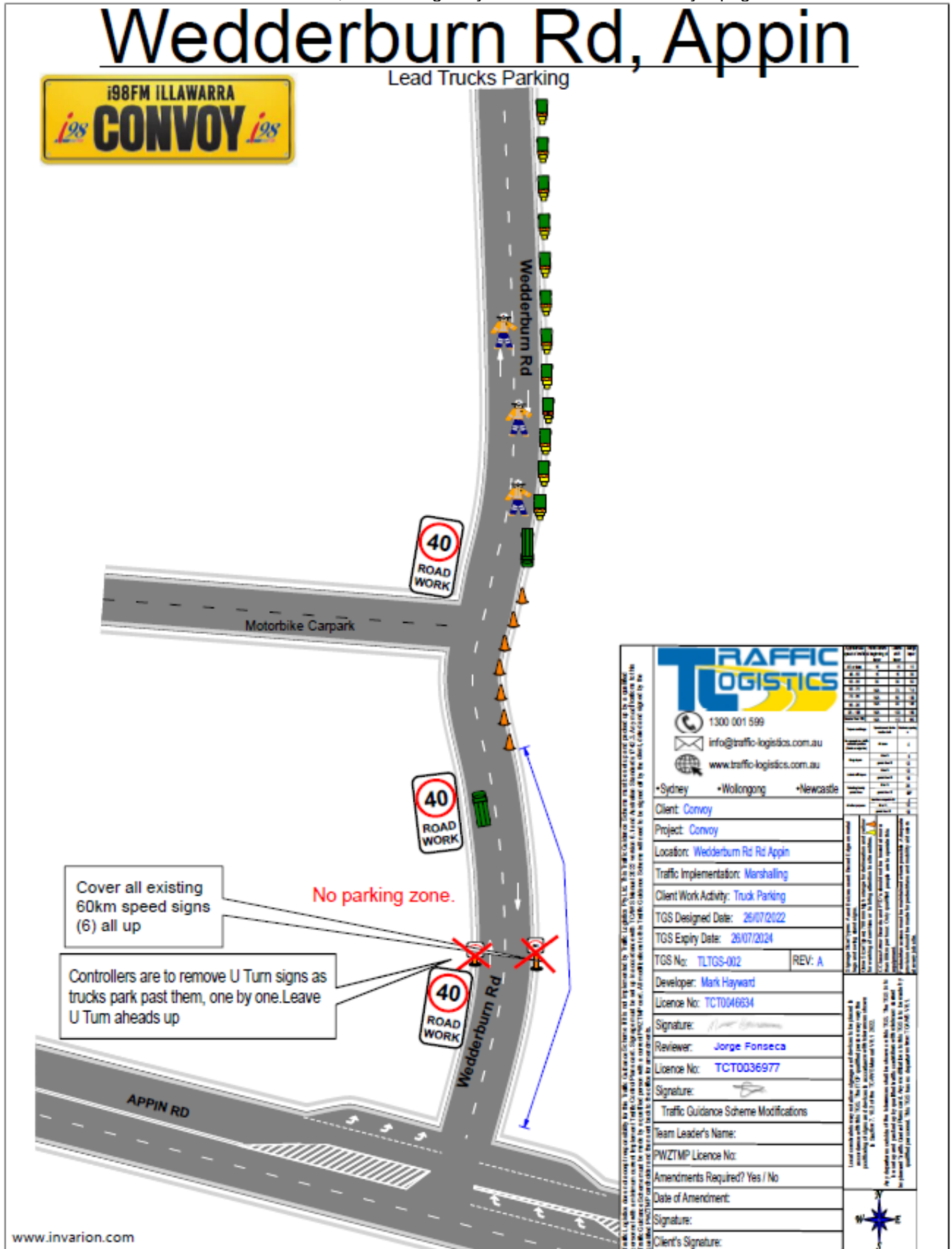
- The proposed road closure be approved subject to [Council's Standard Conditions for Road Closures](#) and the submitted Traffic Control Plan.
- VMS to be installed two weeks prior to the event as part of the community notification process.
- The applicant is to manage the temporary bus layover signage required to support the road closures for the event.



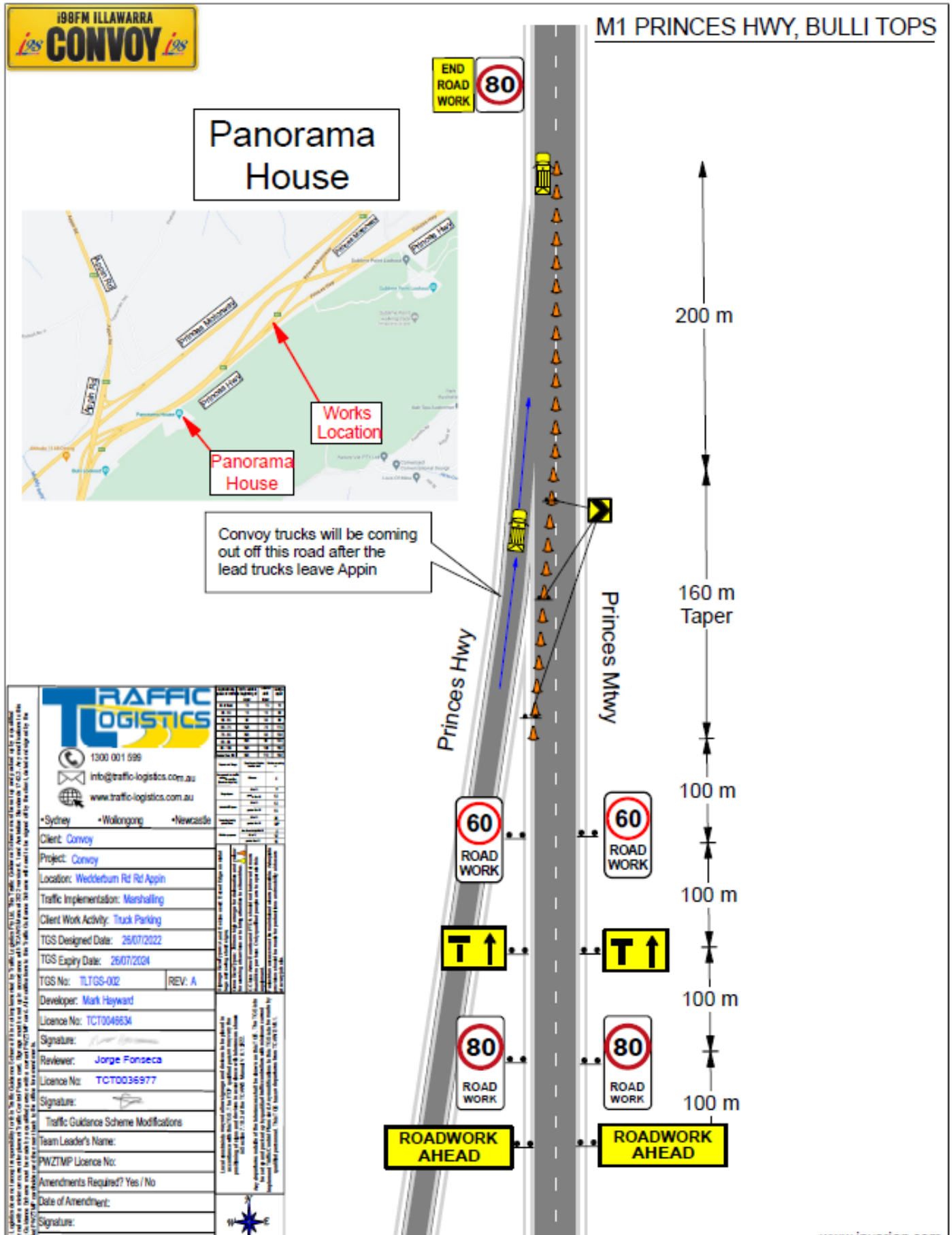
[illegible]

[illegible]

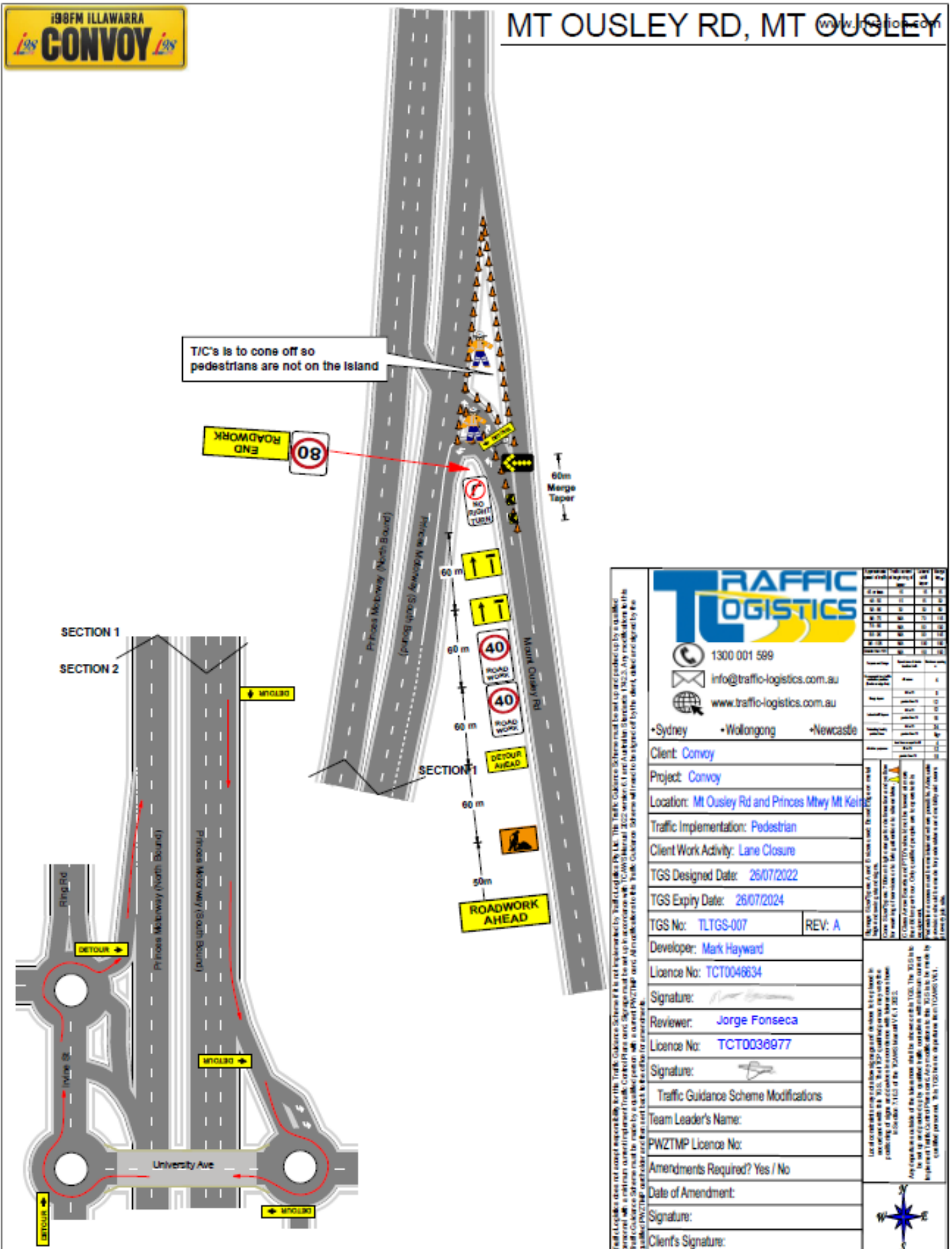




Item 2.1 – BULLI TOPS, Princes Highway – i98FM Illawarra Convoy – page 4 of 9



## MT OUSLEY RD, MT OUSLEY



PRINCES HWY, HELENSBURGH  
Trucks Parking

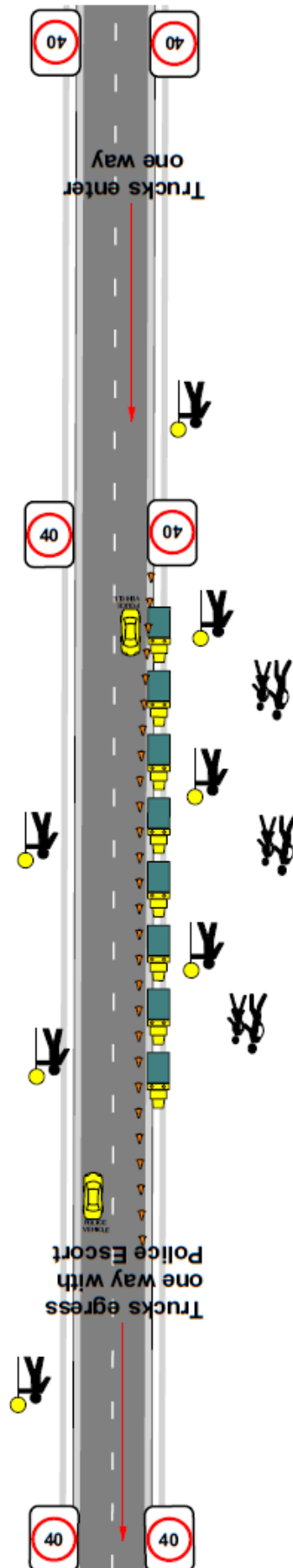
## TRAFFIC CONTROL SIGHT SAFETY RULES

1. No pedestrians on carriageway (no exceptions)
2. Vehicles parked single file for access by emergency vehicles
3. Traffic must be slowed to 40 km/ph at all times
4. Trucks as far off shoulders as possible
5. Police and emergency vehicles have right of way at all times

Cover all speed signs replace with 40Km

Walk with trucks to park up as much to the side as you can

Pick up all signs after the last truck even 198ft Signs and bring back to the yard



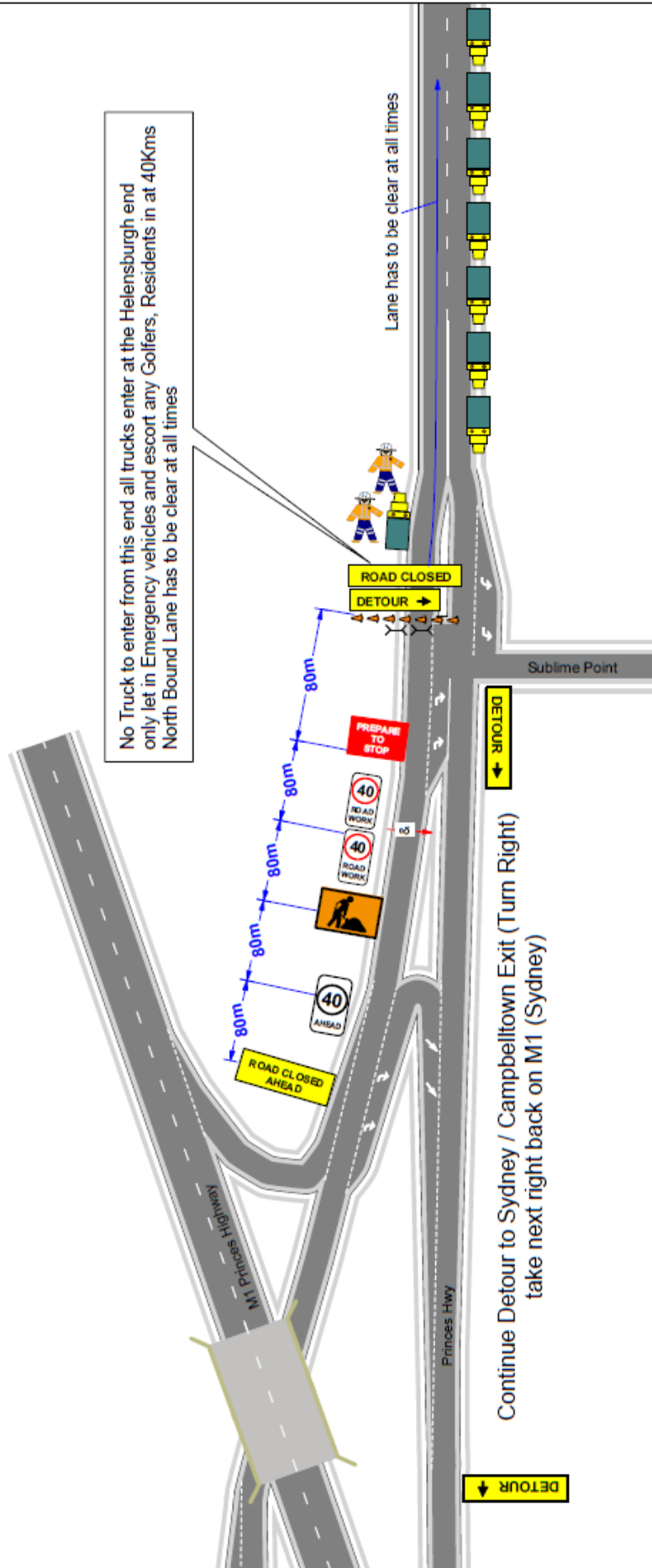
Traffic Logistics does not accept responsibility for this Traffic Guidance Scheme if it is not implemented by Traffic Logistics Pty Ltd. This Traffic Guidance Scheme must be set up and packed up by a qualified person with a minimum current Implement Traffic Control Plans card. Signage must be set up in accordance with the Traffic Management Manual version 6.1 and Australian Standards 1742-3. Any modifications to this Traffic Guidance Scheme will need to be signed off by the client, dated and signed by the Traffic Logistics signaller/packer and then sent back to the office for amendments.

[illegible]

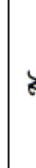


# PRINCES HWY, MADDENS PLAINS

## Southern End



Traffic Logistics does not accept responsibility for this Traffic Guidance Scheme if it is not implemented by Traffic Logistics Pty Ltd. This Traffic Guidance Scheme must be set up and packed up by a qualified personnel with a minimum current Implement Traffic Control Plans card. Signage must be set up in accordance with TCAGV's Manual 2022 version 6.1 and Australian Standards 1742.3. Any modifications to this Traffic Guidance Scheme will need to be signed off by the client, dated and signed by the qualified EVNTWIP cardholder and then sent back to the office for amendments.

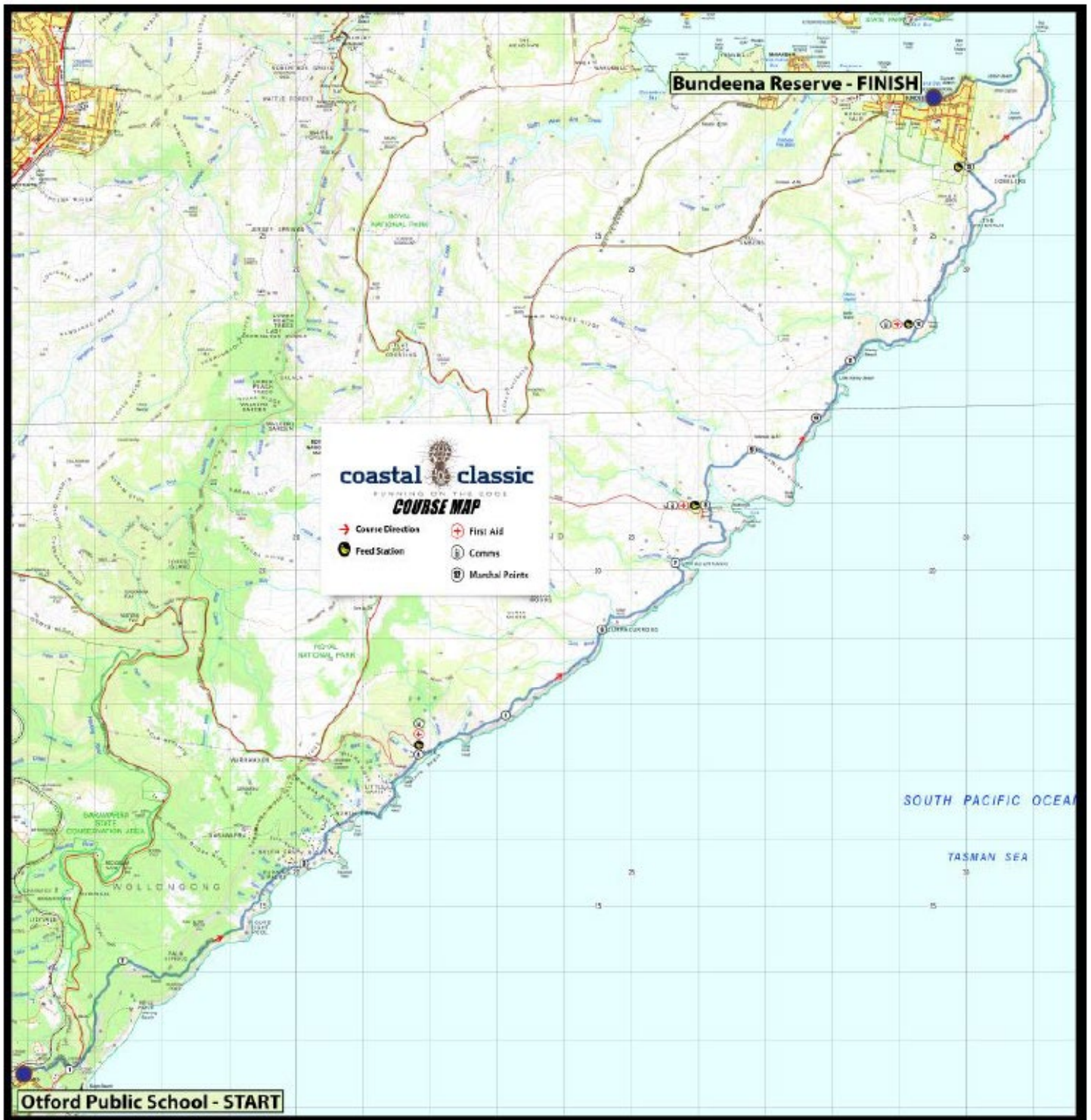
<p>qualified PWTMP candidate and then sent back to the price for amendments.</p>		<p>signage size types: A and B sizes used; boxed edge on metal legs and wind stand signs.</p> <p>cone size types: 700mm high orange for delineation and yellow for warning of services or to bring attention to site entries.</p> <p>C class Arrow boards and PTD's should not be towed at more than 10km per hour. Only qualified people are to operate this equipment. Access must be maintained where possible. Adequate provision should be made for pedestrians and mobility aid users at every job site.</p>		<p>Local constraints may not allow signage and devices to be placed in accordance with this TGS. The ITCP qualified person may vary the positioning of signs and devices in accordance with tolerances shown in Section 7.10.3 of the TCAWS Manual V 6.1 2022.</p> <p>Any departures outside the tolerances shall be TGS. The TGS is to be set up and packed up by qualified traffic controllers with minimum current Implement Traffic Control equipment. Any modification must be made by qualified personnel. This TGS has no departures from TCAWS V6.1.</p>			
<p>Client: <b>Convooy</b></p>		<p>TGS No: <b>TLTGS-04</b></p>		<p>REV: <b>A</b></p>		<p>Traffic Guidance Scheme Modifications</p>	
<p>Project: <b>Convooy</b></p>		<p>Developer: <b>Mark Hayward</b></p>		<p>Team Leader's Name:</p>		<p>Team Leader's Name:</p>	
<p>Location: <b>Generic</b></p>		<p>Licence No: <b>TC70046634</b></p>		<p>PWZTMP Licence No:</p>		<p>PWZTMP Licence No:</p>	
<p>Traffic Implementation: <b>Escort</b></p>		<p>Signature:</p>		<p>Amendments Required? <b>Yes / No</b></p>		<p>Amendments Required? <b>Yes / No</b></p>	
<p>Client Work Activity: <b>convooy</b></p>		<p>Reviewer: <b>Jorge Fonseca</b></p>		<p>Date of Amendment:</p>		<p>Date of Amendment:</p>	
<p>TGS Designed Date: <b>26/07/2022</b></p>		<p>Licence No: <b>TC70036977</b></p>		<p>Signature:</p>		<p>Signature:</p>	
<p>TGS Expiry Date: <b>26/07/2024</b></p>		<p>Signature:</p>		<p>Client's Signature:</p>		<p>Client's Signature:</p>	

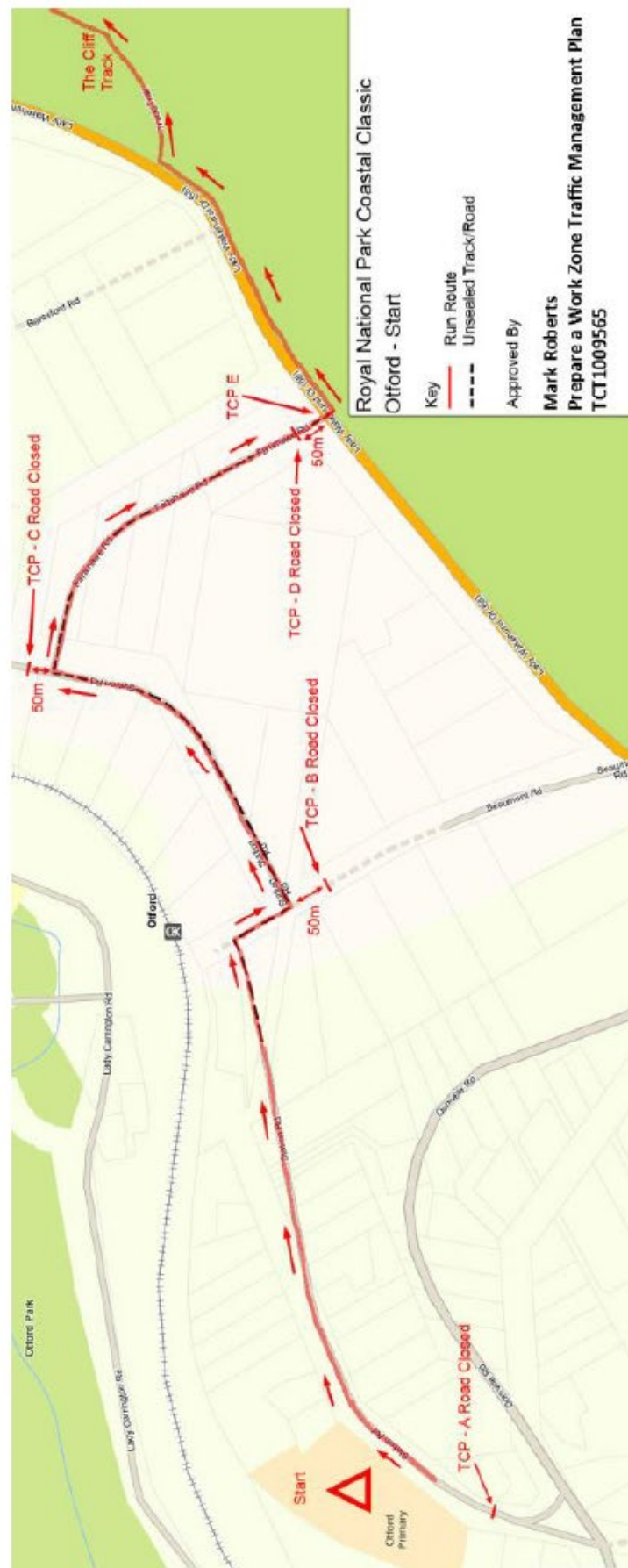
[illegible]





Item 2.2 – Otford - Station, Beaumont, Fanshawe Roads - Coastal Classic 30km Trail Run, Page 1 of 8



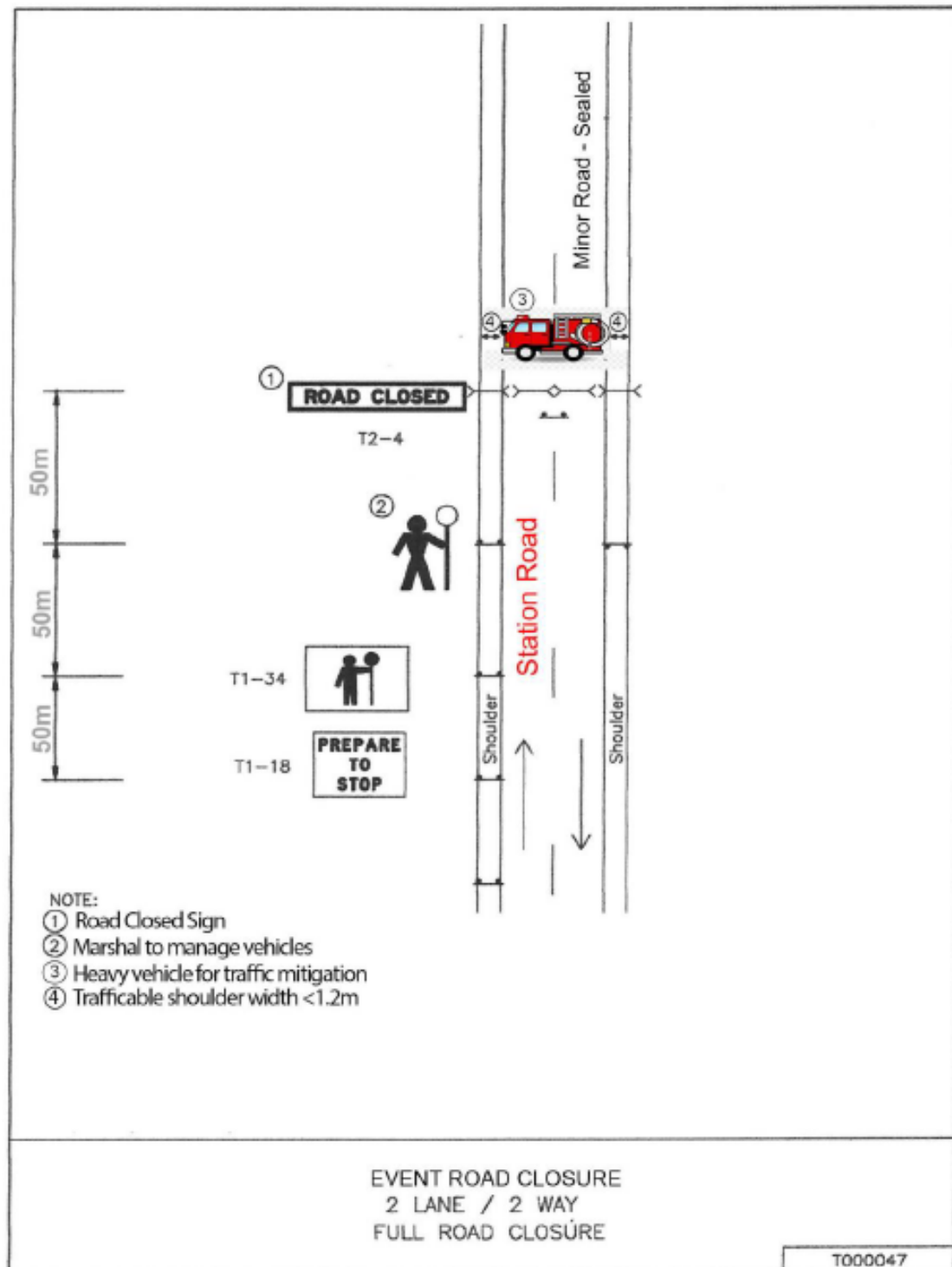




# TCP - A



## Traffic Control Plan for Running Event

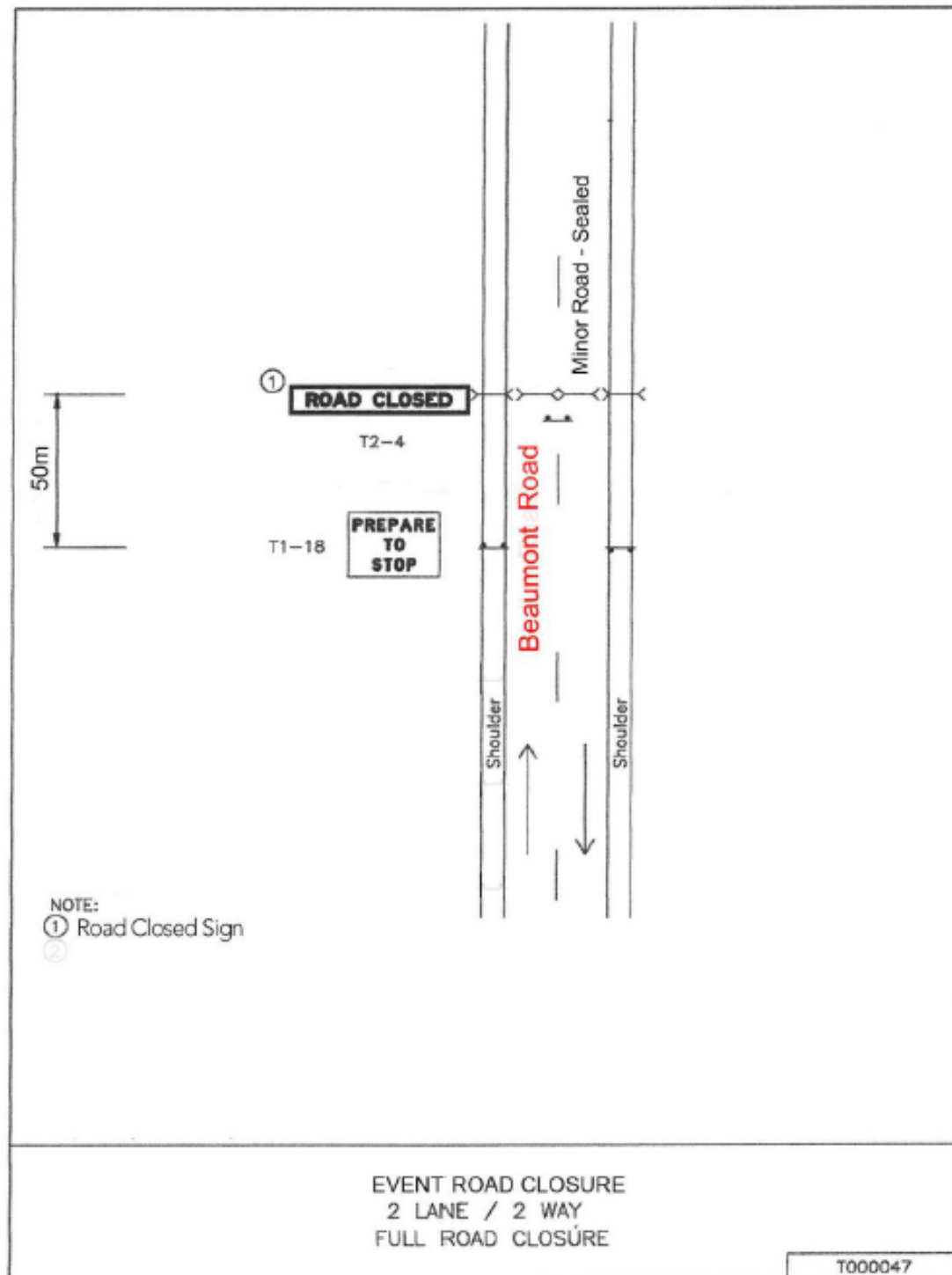


Prepare a Work Zone Traffic Management Plan  
Mark Roberts  
Card No: TCT1009565

## TCP - B



### Traffic Control Plan for Running Event

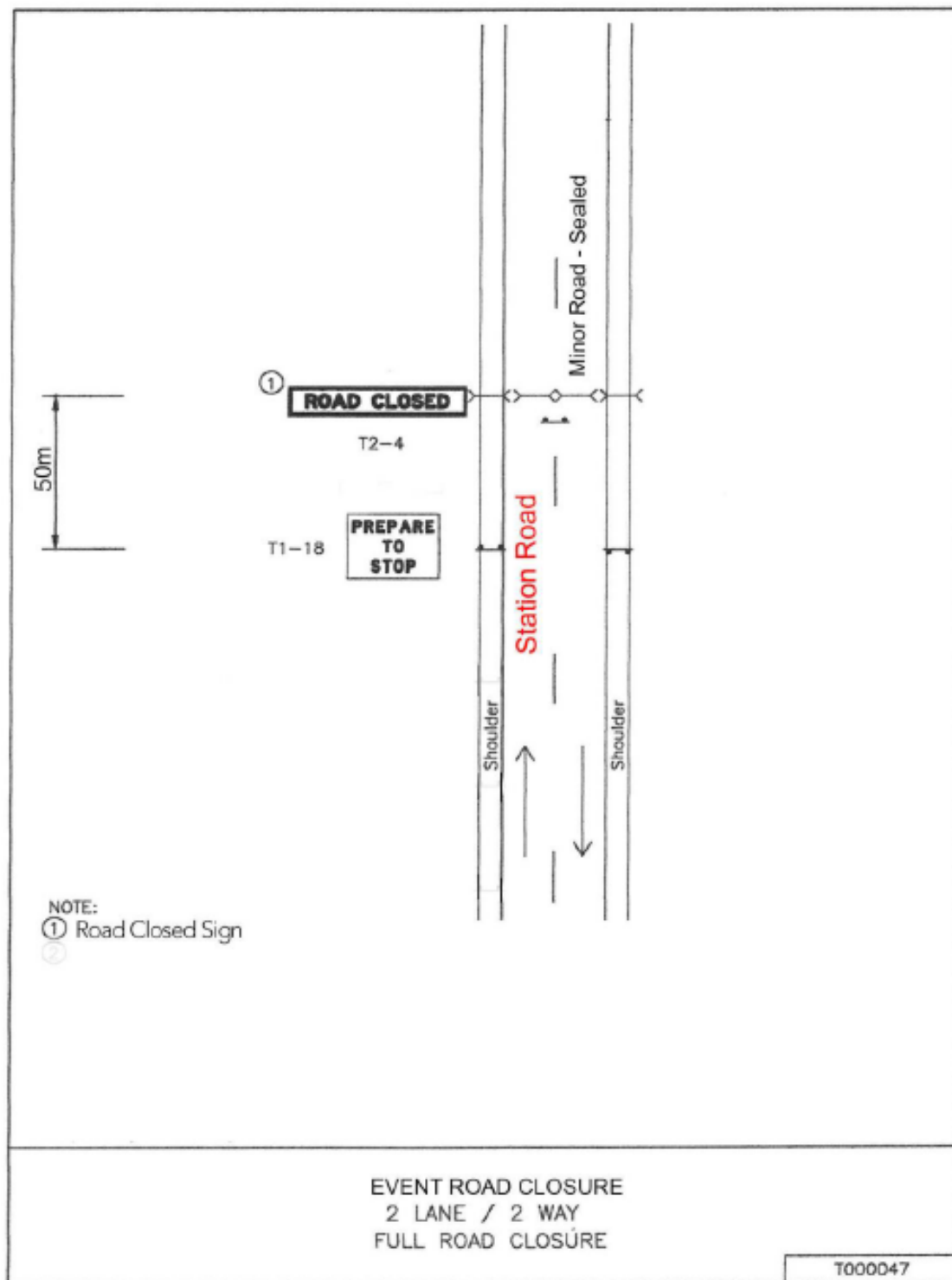


Prepare a Work Zone Traffic Management Plan  
Mark Roberts  
Card No: TCT1009565

# TCP - C



## Traffic Control Plan for Running Event



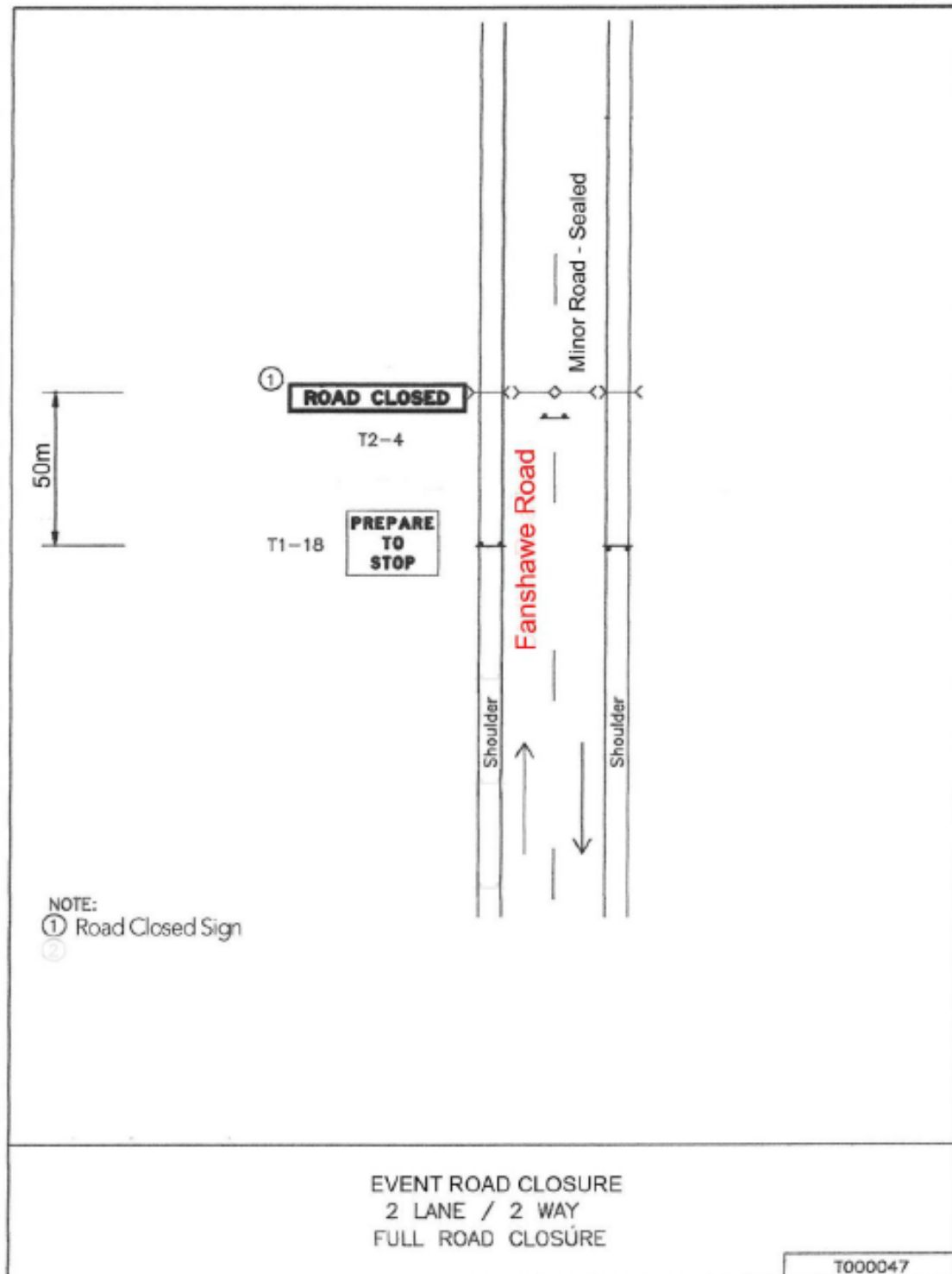
Prepare a Work Zone Traffic Management Plan  
Mark Roberts  
Card No: TCT1009565



# TCP - D



## Traffic Control Plan for Running Event

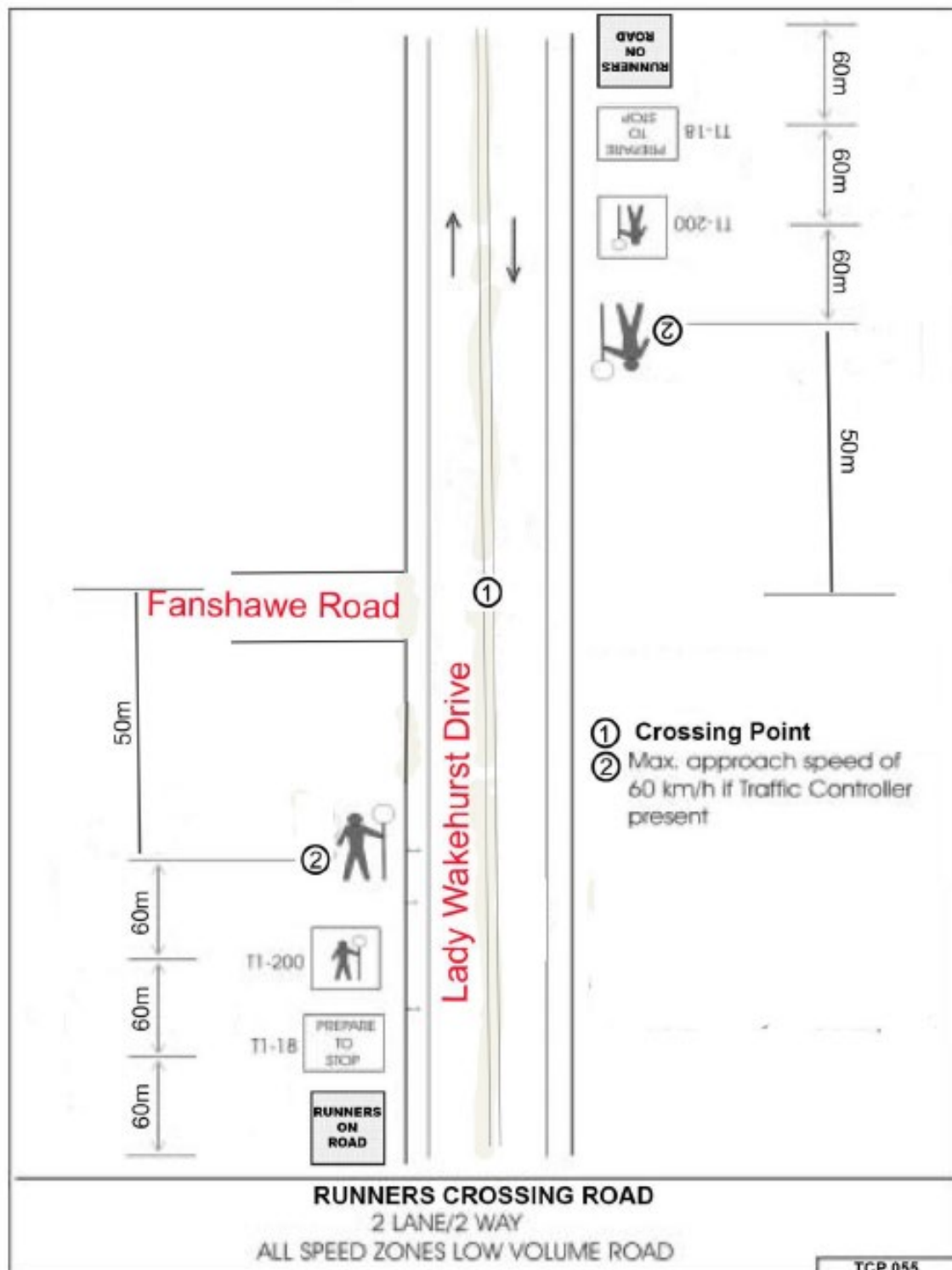


Prepare a Work Zone Traffic Management Plan  
Mark Roberts  
Card No: TCT1009565

# TCP - E



## Traffic Control Plan for Running Event



Prepare a Work Zone Traffic Management Plan  
Mark Roberts  
Card No: TCT1009565

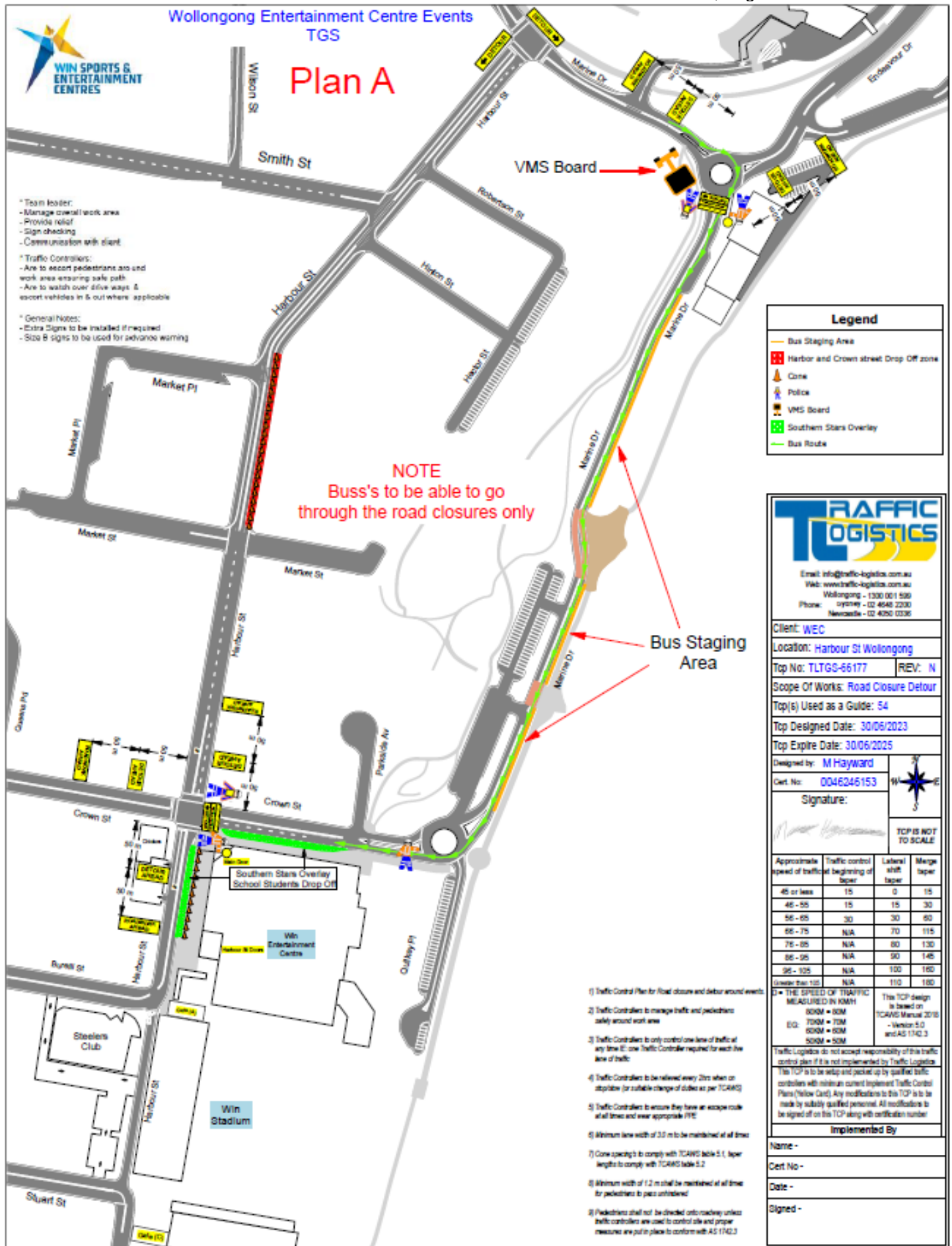
## Additional Sign

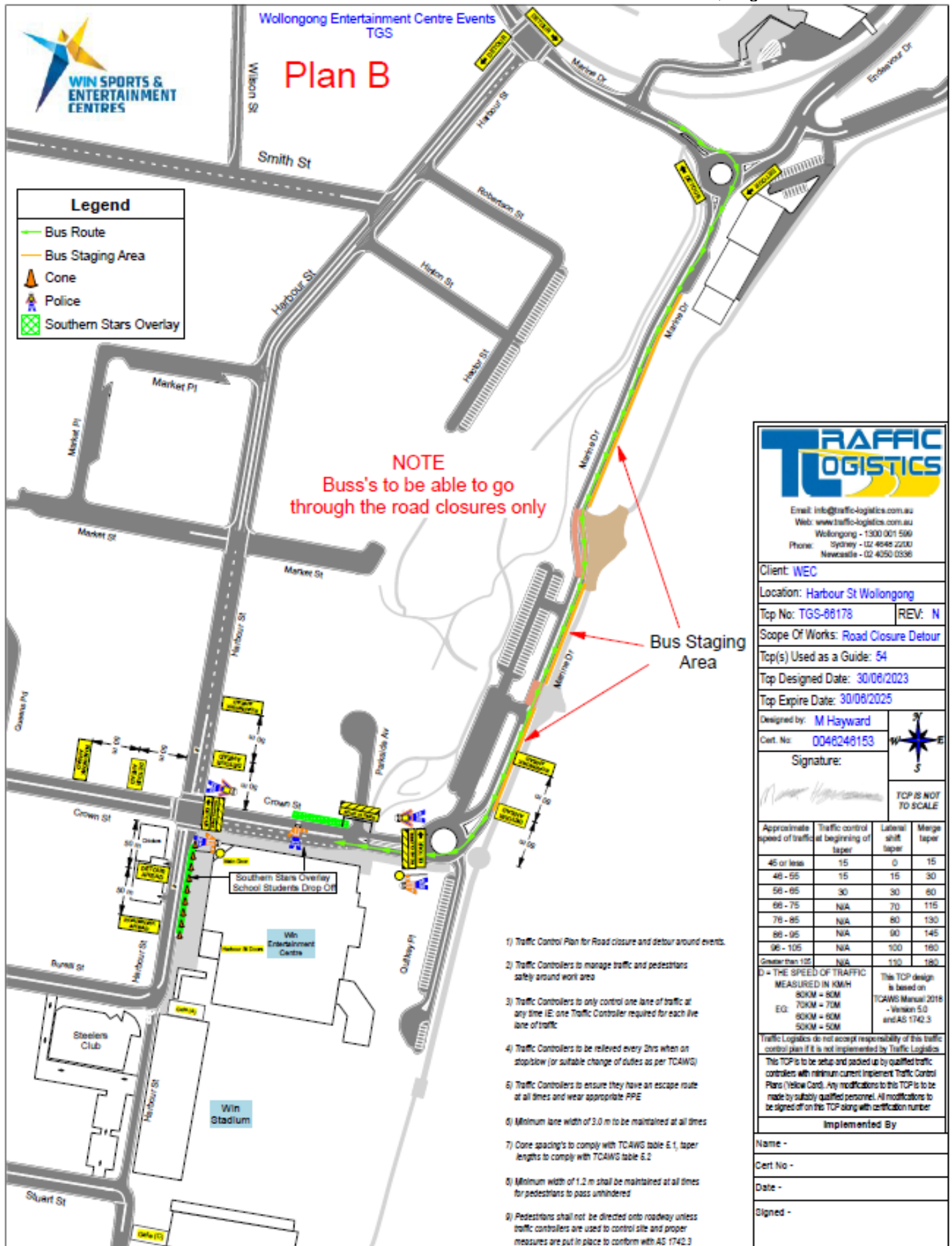
TCP E

“Runners On Road” – 900x900



Item 2.3 – WOLLONGONG – WIN Entertainment Centre – Southern Stars, Page 1 of 2





### 3 DESIGN MATTERS

#### 3.1 KEMBLA HEIGHTS, Harry Graham Drive - Ward 2 – Keira Electorate - Illawarra Mountain Bike Project Sign & Line Plans

##### BACKGROUND

As part of the Illawarra Escarpment Mountain Bike Trails Project, Council is proposing to:

1. Construct a parking bay and shuttle bus pick up/drop off location adjacent to the Wollongong Motorcycle Club as well as existing intersection improvements and installing additional signage and line marking. Plans also include swept path assessments for the Committee to note with the B99 vehicle + trailer as the design vehicle and a service vehicle as the check. Please note this intersection is an existing intersection.
2. Construct two informal carparks, one formalised carpark and a shuttle bus pick up/drop off location as well as installing additional signage and pavement markings. Please note that the 60km/h posted speed limits are existing conditions however the area is currently under TGS conditions (may not currently be the posted speed at the time of writing) and a speed zone review is in progress by Transport for NSW (TfNSW).

The proposed cyclist warning signs and lines have been proposed to identify warning to motorists on approach to (and at) defined cyclist crossing points as part of the Illawarra Mountain Bike Project. These installations will reduce the likelihood risk of a collision between a cyclist and vehicle at these defined crossing locations.

##### CONSULTATION

Community consultation has been completed as part of the project.

##### PROPOSAL

The attached plans be approved, subject to Council checking with TfNSW regarding the speed zone review progress/outcome prior to installation of speed zone signs.



**LEGEND**

ISO LINE TYPE  
E  
F  
G  
H  
I  
J  
K  
L  
M  
N  
O  
P  
Q  
R  
S  
T  
U  
V  
W  
X  
Y  
Z  
AA  
AB  
AC  
AD  
AE  
AF  
AG  
AH  
AI  
AJ  
AK  
AL  
AM  
AN  
AO  
AP  
AQ  
AR  
AS  
AT  
AU  
AV  
AW  
AX  
AY  
AZ  
BA  
BB  
BC  
BD  
BE  
BF  
BG  
BH  
BI  
BJ  
BK  
BL  
BM  
BN  
BO  
BP  
BQ  
BR  
BS  
BT  
BU  
BV  
BW  
BX  
BY  
BZ  
CA  
CB  
CC  
CD  
CE  
CF  
CG  
CH  
CI  
CJ  
CK  
CL  
CM  
CN  
CO  
CP  
CQ  
CR  
CS  
CT  
CU  
CV  
CW  
CX  
CY  
CZ  
DA  
DB  
DC  
DD  
DE  
DF  
DG  
DH  
DI  
DJ  
DK  
DL  
DM  
DN  
DO  
DP  
DQ  
DR  
DS  
DT  
DU  
DV  
DW  
DX  
DY  
DZ  
EA  
EB  
EC  
ED  
EE  
EF  
EG  
EH  
EI  
EJ  
EK  
EL  
EM  
EN  
EO  
EP  
EQ  
ER  
ES  
ET  
EU  
EV  
EW  
EX  
EY  
EZ  
FA  
FB  
FC  
FD  
FE  
FF  
FG  
FH  
FI  
FJ  
FK  
FL  
FM  
FN  
FO  
FP  
FQ  
FR  
FS  
FT  
FU  
FV  
FW  
FX  
FY  
FZ  
GA  
GB  
GC  
GD  
GE  
GF  
GG  
GH  
GI  
GJ  
GK  
GL  
GM  
GN  
GO  
GP  
GQ  
GR  
GS  
GT  
GU  
GV  
GW  
GX  
GY  
GZ  
HA  
HB  
HC  
HD  
HE  
HF  
HG  
HH  
HI  
HJ  
HK  
HL  
HM  
HN  
HO  
HP  
HQ  
HR  
HS  
HT  
HU  
HV  
HW  
HX  
HY  
HZ  
IA  
IB  
IC  
ID  
IE  
IF  
IG  
IH  
II  
IJ  
IK  
IL  
IM  
IN  
IO  
IP  
IQ  
IR  
IS  
IT  
IU  
IV  
IW  
IX  
IY  
IZ  
JA  
JB  
JC  
JD  
JE  
JF  
JG  
JH  
JI  
JJ  
JK  
JL  
JM  
JN  
JO  
JP  
JQ  
JR  
JS  
JT  
JU  
JV  
JW  
JX  
JY  
JZ  
KA  
KB  
KC  
KD  
KE  
KF  
KG  
KH  
KI  
KJ  
KL  
KM  
KN  
KO  
KP  
KQ  
KR  
KS  
KT  
KU  
KV  
KW  
KX  
KY  
KZ  
LA  
LB  
LC  
LD  
LE  
LF  
LG  
LH  
LI  
LJ  
LK  
LL  
LM  
LN  
LO  
LP  
LQ  
LR  
LS  
LT  
LU  
LV  
LW  
LX  
LY  
LZ  
MA  
MB  
MC  
MD  
ME  
MF  
MG  
MH  
MI  
MJ  
MK  
ML  
MN  
MO  
MP  
MQ  
MR  
MS  
MT  
MU  
MV  
MW  
MX  
MY  
MZ  
NA  
NB  
NC  
ND  
NE  
NF  
NG  
NH  
NI  
NJ  
NK  
NL  
NM  
NO  
NP  
NQ  
NR  
NS  
NT  
NU  
NV  
NW  
NX  
NY  
NZ  
OA  
OB  
OC  
OD  
OE  
OF  
OG  
OH  
OI  
OJ  
OK  
OL  
OM  
ON  
OO  
OP  
OQ  
OR  
OS  
OT  
OU  
OV  
OW  
OX  
OY  
OZ  
PA  
PB  
PC  
PD  
PE  
PF  
PG  
PH  
PI  
PJ  
PK  
PL  
PM  
PN  
PO  
PP  
PQ  
PR  
PS  
PT  
PU  
PV  
PW  
PX  
PY  
PZ  
QA  
QB  
QC  
QD  
QE  
QF  
QG  
QH  
QI  
QJ  
QK  
QL  
QM  
QN  
QO  
QP  
QQ  
QR  
QS  
QT  
QU  
QV  
QW  
QX  
QY  
QZ  
RA  
RB  
RC  
RD  
RE  
RF  
RG  
RH  
RI  
RJ  
RK  
RL  
RM  
RN  
RO  
RP  
RQ  
RR  
RS  
RT  
RU  
RV  
RW  
RX  
RY  
RZ  
SA  
SB  
SC  
SD  
SE  
SF  
SG  
SH  
SI  
SJ  
SK  
SL  
SM  
SN  
SO  
SP  
SQ  
SR  
SS  
ST  
SU  
SV  
SW  
SX  
SY  
SZ  
TA  
TB  
TC  
TD  
TE  
TF  
TG  
TH  
TI  
TJ  
TK  
TL  
TM  
TN  
TO  
TP  
TQ  
TR  
TS  
TT  
TU  
TV  
TW  
TX  
TY  
TZ  
UA  
UB  
UC  
UD  
UE  
UF  
UG  
UH  
UI  
UJ  
UK  
UL  
UM  
UN  
UO  
UP  
UQ  
UR  
US  
UT  
UU  
UV  
UW  
UX  
UY  
UZ  
VA  
VB  
VC  
VD  
VE  
VF  
VG  
VH  
VI  
VJ  
VK  
VL  
VM  
VN  
VO  
VP  
VQ  
VR  
VS  
VT  
VU  
VV  
VW  
VX  
VY  
VZ  
WA  
WB  
WC  
WD  
WE  
WF  
WG  
WH  
WI  
WJ  
WK  
WL  
WM  
WN  
WO  
WP  
WQ  
WR  
WS  
WT  
WU  
WV  
WW  
WX  
WY  
WZ  
XA  
XB  
XC  
XD  
XE  
XF  
XG  
XH  
XI  
XJ  
XK  
XL  
XM  
XN  
XO  
XP  
XQ  
XR  
XS  
XT  
XU  
XV  
XW  
XX  
XY  
XZ  
YA  
YB  
YC  
YD  
YE  
YF  
YG  
YH  
YI  
YJ  
YK  
YL  
YM  
YN  
YO  
YP  
YQ  
YR  
YS  
YT  
YU  
YV  
YW  
YX  
YY  
YZ  
ZA  
ZB  
ZC  
ZD  
ZE  
ZF  
ZG  
ZH  
ZI  
ZJ  
ZK  
ZL  
ZM  
ZN  
ZO  
ZP  
ZQ  
ZR  
ZS  
ZT  
ZU  
ZV  
ZW  
ZX  
ZY  
ZZ

**NOTES:**

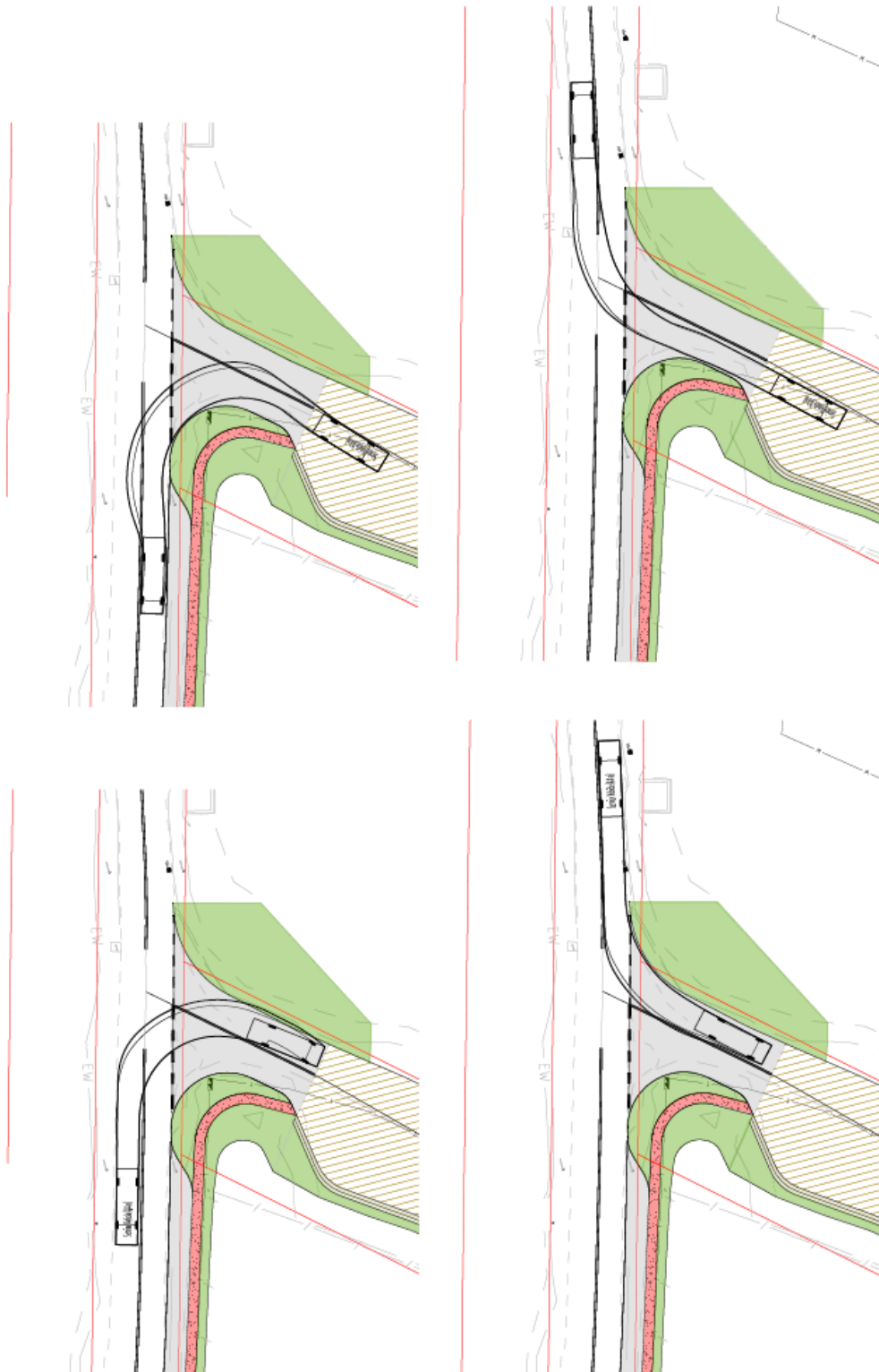
1. ALL LINE TYPES REFERRED TO IN THIS PLAN ARE TO BE USED IN ACCORDANCE WITH THE AUSTROADS ROAD DESIGN MANUAL (RDM) AND THE AUSTROADS ROAD MARKING MANUAL (RMM).
2. THE STANDARD TRAFFIC LIGHTS REFERRED TO IN THIS PLAN ARE REFERRED TO IN THE AUSTROADS ROAD DESIGN MANUAL (RDM) AND THE AUSTROADS ROAD MARKING MANUAL (RMM).
3. THE STANDARD TRAFFIC LIGHTS REFERRED TO IN THIS PLAN ARE REFERRED TO IN THE AUSTROADS ROAD DESIGN MANUAL (RDM) AND THE AUSTROADS ROAD MARKING MANUAL (RMM).
4. THE STANDARD TRAFFIC LIGHTS REFERRED TO IN THIS PLAN ARE REFERRED TO IN THE AUSTROADS ROAD DESIGN MANUAL (RDM) AND THE AUSTROADS ROAD MARKING MANUAL (RMM).
5. THE STANDARD TRAFFIC LIGHTS REFERRED TO IN THIS PLAN ARE REFERRED TO IN THE AUSTROADS ROAD DESIGN MANUAL (RDM) AND THE AUSTROADS ROAD MARKING MANUAL (RMM).
6. THE STANDARD TRAFFIC LIGHTS REFERRED TO IN THIS PLAN ARE REFERRED TO IN THE AUSTROADS ROAD DESIGN MANUAL (RDM) AND THE AUSTROADS ROAD MARKING MANUAL (RMM).
7. THE STANDARD TRAFFIC LIGHTS REFERRED TO IN THIS PLAN ARE REFERRED TO IN THE AUSTROADS ROAD DESIGN MANUAL (RDM) AND THE AUSTROADS ROAD MARKING MANUAL (RMM).
8. THE STANDARD TRAFFIC LIGHTS REFERRED TO IN THIS PLAN ARE REFERRED TO IN THE AUSTROADS ROAD DESIGN MANUAL (RDM) AND THE AUSTROADS ROAD MARKING MANUAL (RMM).
9. THE STANDARD TRAFFIC LIGHTS REFERRED TO IN THIS PLAN ARE REFERRED TO IN THE AUSTROADS ROAD DESIGN MANUAL (R

[illegible]

## TURN PATHS CHECK

8.8m SERVICE VEHICLE

10KM/H



**BYDA NOTE:**  
LOCATING BYDA TO COVERED FIRM TO DETERMINE IF  
CONSISTENT WITH FIRM'S POLICY AND SERVICE TO THE FIRM

[illegible]

TURN PATHS

CUSTOM VEHICLE - B99 VEHICLE WITH 3m TRAILER

10KM/H

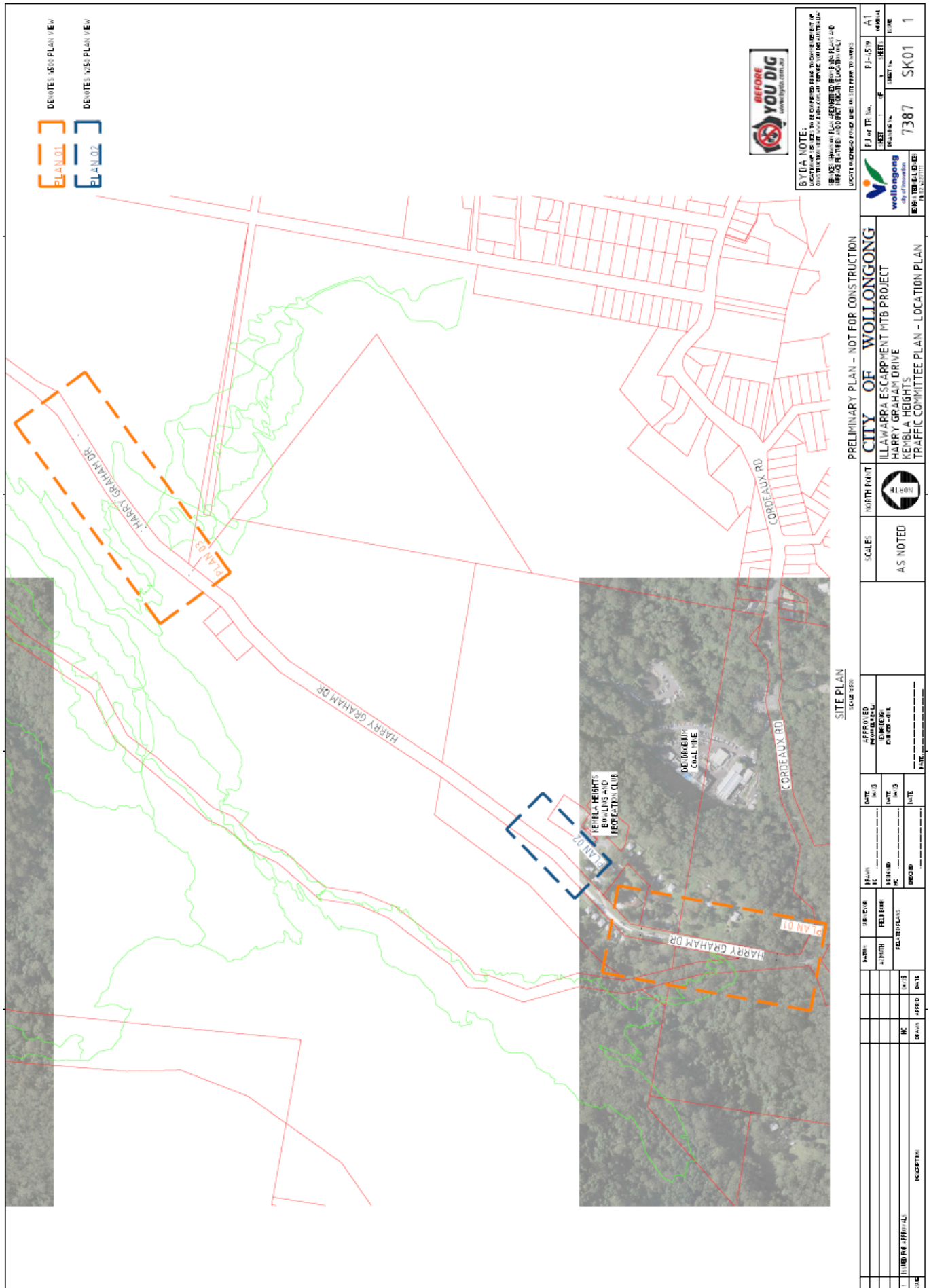
10KM/H



**BYDA NOTE:**  
 EDUCATION SERVICES TO BE COMPLETED BY THE DATE OF THE BYDA MEETING. ALL SERVICES MUST BE COMPLETED BY THE DATE OF THE BYDA MEETING.

[illegible]

Item 3.2 – KEMBLA HEIGHTS, Harry Graham Drive - Illawarra Mountain Bike Project Sign & Line Plans, page 5 of 8









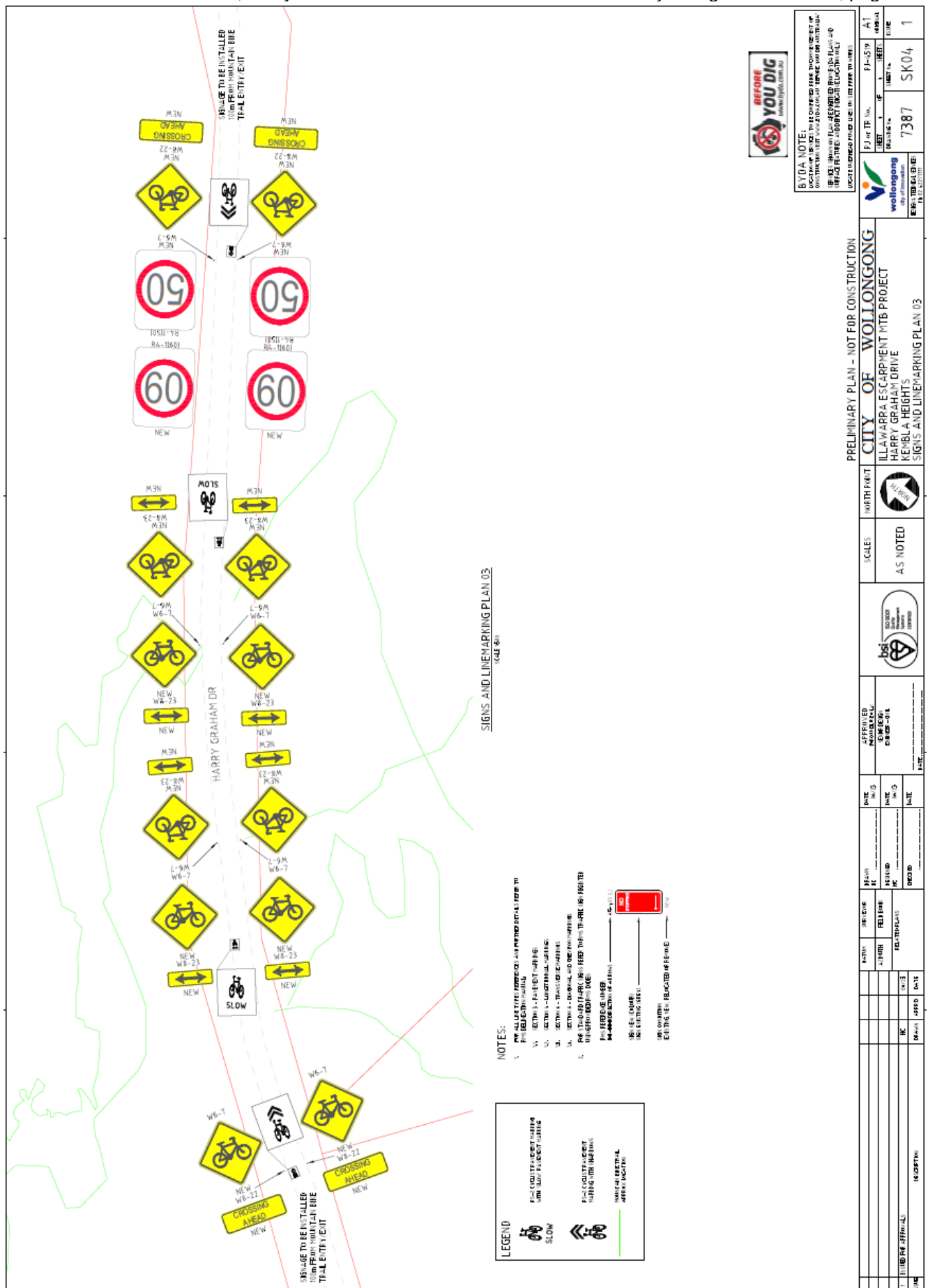
[illegible][illegible]

**BEFORE  
YOU DIG**  
www.budd.com.au

**BYDA NOTE:**  
 CONTACT THE BYDA OFFICE TO ORDER OR TO REQUEST A FREE INFORMATION KIT. CALL 1-800-368-3333, EXT. 2300, OR VISIT [WWW.BYDA.ORG](http://WWW.BYDA.ORG).

[illegible]

Item 3.2 – KEMBLA HEIGHTS, Harry Graham Drive - Illawarra Mountain Bike Project Sign & Line Plans, page 8 of 8



#### 4 UPDATES TO PREVIOUS AGENDA ITEMS

##### 4.1 WOLLONGONG, Crown Street and Queens Parade – Ward 2 – Wollongong Electorate - Tower Crane Installation (Item 3.2 – 13 June 2023)

###### BACKGROUND

Build High has previously applied for a road closure of Queens Parade on 6 July 2023, with a backup date on 13 July 2023, from 6am to 6pm. This was approved as Item 3.2 on the 13 June 2023 Traffic Committee which is shown below. Due to scheduling issues, a new date is proposed on 20 July 2023 from 6am to 6pm using the same TGS plans and road closure conditions.

###### ***Below is the original application from Traffic Committee 13 June 2023:***

Build High is managing a project on 40 Crown Street Wollongong and has requested a road closure for the installation of a tower crane from Queens Parade Wollongong. The road will be closed between Crown Street and the extent of their site, fronting Queens Parade. There will be intermittent stops close to the traffic lights on Crown Street, approximately one stop per hour for 6-7 hours for semitrailers to reverse into the site. Semitrailer drivers will reverse from Crown Street into the site and drive out forward north along Queens Parade. The proposed date is 6 July 2023 with a backup date of 13 July 2023, from 6am to 6pm. Pedestrians will be directed safely around the site by traffic control.

A Road Occupancy application has already been submitted to Council's Construction Compliance Team who will provide final S138 approval.

###### CONSULTATION

Build High have advised they will provide a letter drop and individually speak with each adjoining business.

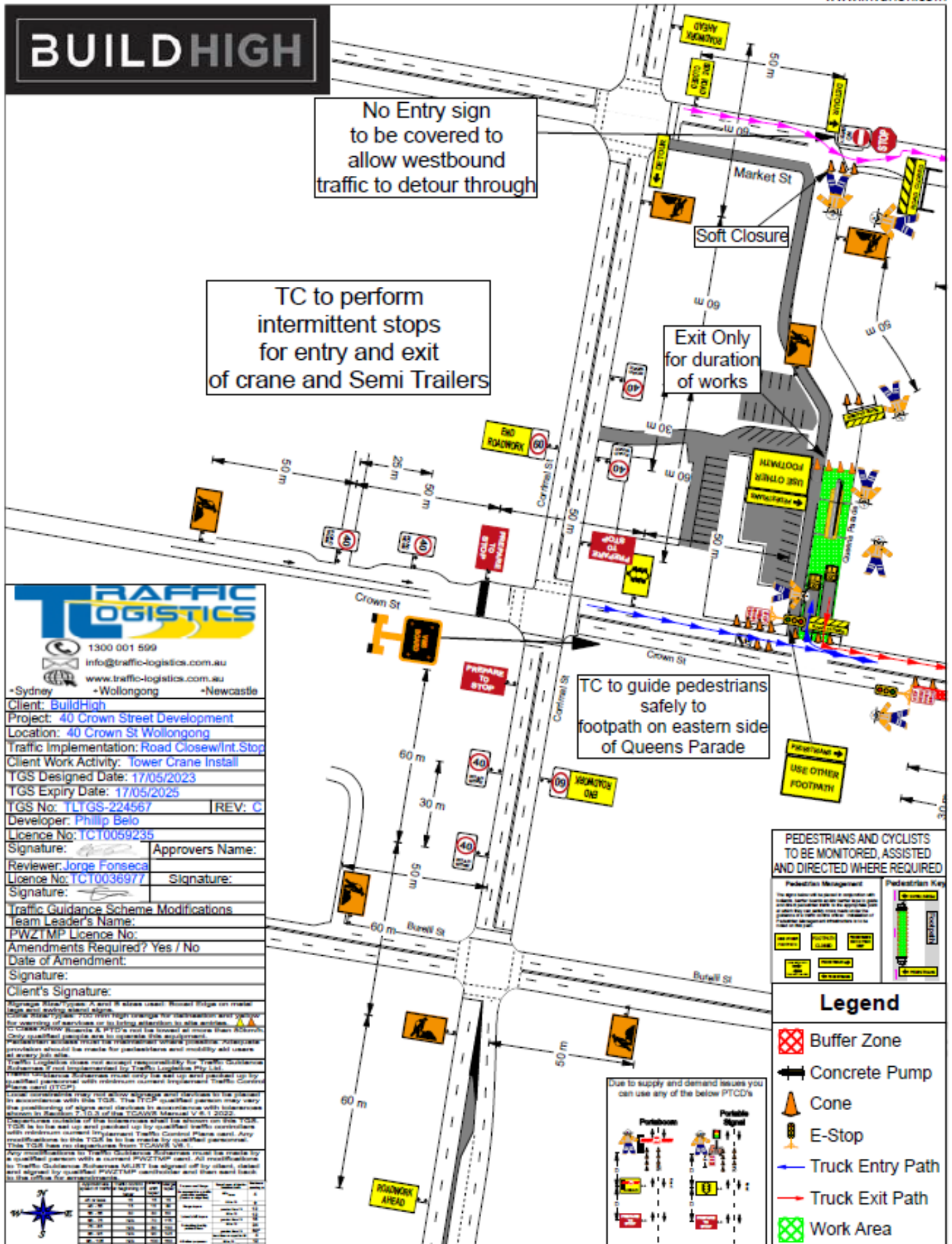
###### PROPOSAL

The road closures be approved subject to the submitted Traffic Control Plans, [Council's Standard Conditions for Road Closures](#).

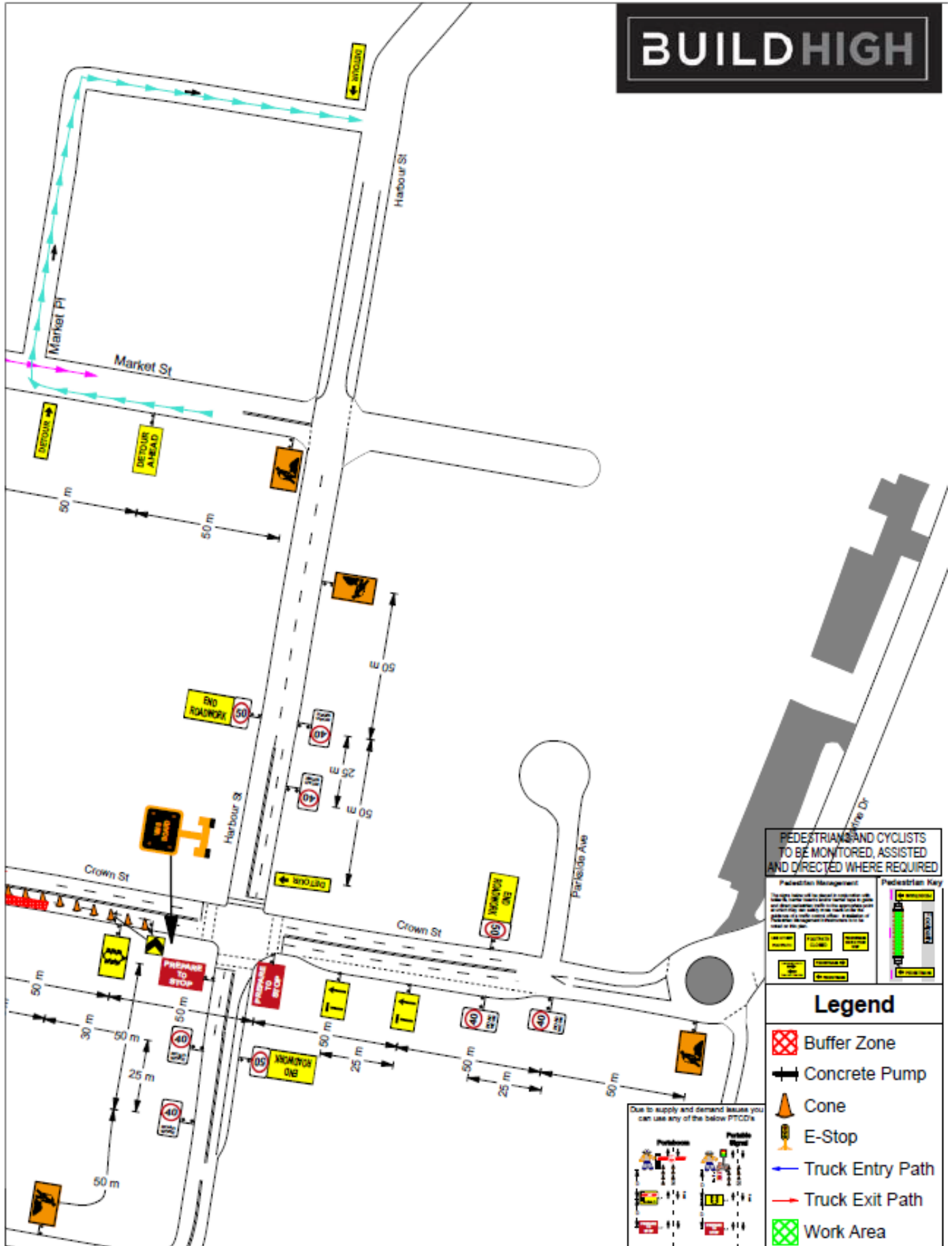
Additional Recommendations:

- One way and no entry signs are to be covered whilst contra-flow is in operation.
- VMS Boards must be operating at least 7 days prior to the closure.

Item 4.1 - WOLLONGONG, Crown Street and Queens Parade – Ward 2 – Wollongong Electorate - Tower Crane Installation, Page 1 of 2



Item 4.1 - WOLLONGONG, Crown Street and Queens Parade – Ward 2 – Wollongong Electorate - Tower Crane Installation, Page 2 of 2





## 5 DOB IN A HOON (NSW POLICE REFERRALS)

STREET	SUBURB	CONCERN
Station Street	THIRROUL	A Customer Request has been received advising of drivers constantly speeding on Station Street, Thirroul from the railway station to the intersection at McCauley Street.
Meadows Street	TARRAWANNA	Speeding drivers through school zone at Tarrawanna Public School on Meadow Street, Tarrawanna. They are also failing to stop at Pedestrian/Children's Crossing in peak school zone times.
Princes Highway and Gibsons Road	FIGTREE	We are receiving multiple customer requests reporting regular queuing across the roundabout intersection particularly at peak times
Cordeaux Road	MOUNT KEMBLA	An email has been received from TfNSW School Crossing Coordinator reporting drivers speeding through the school children's crossing during school peak times at Mount Kembla Public School, Cordeaux Road, Mount Kembla
Kanahooka Road	KANAHOOKA	The carpark at Kanahooka Point off Kanahooka Rd, Kanahooka was raised as a spot with hooning vehicle behaviour. A Community Safety Audit was completed in September 2022 and found no major issues were identified.
Wallabah Way	KANAHOOKA	Council has received a request regarding speeding and 'hooning' behaviour close to the pedestrian crossing on Wallabah Way. Close to the intersection of Byamee St and Wallabah Way.
Prince Edward Drive	DAPTO	Monitoring and targeting of hooners who are speeding on the street making it unsafe for residents and visitors to access.
Huxley Road	Horsley	Speeding vehicle reported by a customer who lives near 57 Huxley Drive