



PLAY

WOLLONGONG

CHILDREN'S DEMOGRAPHIC PROFILE REPORT

Adopted by Council 23 June 2014

CONTENTS

Understanding Our Strategic Boundaries.....	3
Introduction.....	4
Population Figures.....	4
Comparison Population Figures.....	4
Population Figures for 0-12 Age Groupings.....	5
Population Figures by Suburbs.....	5
Population Figures by Planning Districts and Planning Areas.....	6
SEIFA – Index of Disadvantage.....	13
Areas of Most Disadvantage.....	13
Appendix 1.....	16

LIST OF TABLES

Table 1: Current and Forecasted Population Figures by Comparison Areas.....	4
Table 2: Current and Forecasted Child Population Figures for 2011 and 2024 by Age Group.....	5
Table 3: Current and Forecasted Child Population Figures for 2011 and 2024 by Suburb.....	5
Table 4: Child Population by Planning Districts and Planning Areas.....	8
Table 5: SEIFA Index by Suburb.....	14

LIST OF FIGURES

Figure 1: Forecast Growth in Child Population from 2011 to 2024.....	9
Figure 2: Child Population for 2011 and 2024 by Planning Areas.....	12
Figure 3: Comparative SEIFA Rankings for Wollongong LGA, 2011.....	13

LIST OF MAPS

Map 1: Population (0-12yrs) Figures 2011.....	10
Map 2: Population (0-12yrs) Figures 2024.....	11
Map 3: SEIFA Index by Suburb, Planning Districts and Planning Areas.....	15

The following information is based on Australian Bureau of Statistics, Census of Population and Housing 2011. Compiled and presented in profile.id by .id, the population experts.

- Forecast data developed by Forecast.id – data based on ABS Census Population and Housing 2011 (Usual Residence).
- Australian Bureau of Statistics, Regional Population Growth, Australia (3218.0). Compiled and presented in profile.id by .id the population experts.

UNDERSTANDING OUR STRATEGIC BOUNDARIES

To assist with strategically planning and managing play spaces and recreation, Council's adopted Strategic Framework for Open Space, Recreation Facilities and Community Facilities, *Planning People Places* (2006) divides the Local Government Area (LGA) into 4 Planning Districts and 10 Planning Areas.

Planning Districts are identified through linking clusters of suburbs based on geography and potential physical and social connections.

Planning Areas are identified as a next layer down from Planning Districts and are based on a more local level that considers supply and demand within clusters of suburbs.

Planning District 4 and Planning Area 10 is located within the Illawarra Escarpment and is not generally considered within this report.



Reference Tool for Our Strategic Planning Boundaries		
Planning District 1	Planning Area 1	Helensburgh, Otford, Stanwell Park, Stanwell Tops
	Planning Area 2	Austinmer, Coalcliff, Coledale, Scarborough, Thirroul, Wombarra
	Planning Area 3	Bulli, Russell Vale, Woonona
Planning District 2	Planning Area 4	Balgownie, Bellambi, Corrimal, Fairy Meadow, Mount Ousley, Mount Pleasant, Tarrawanna, Towradgi
	Planning Area 5	Coniston, Figtree, Gwynneville, Keiraville, Mangerton, Mount Keira, Mount Saint Thomas, North Wollongong, West Wollongong, Wollongong
	Planning Area 6	Cordeaux Heights, Farmborough Heights, Kembla Grange, Mount Kembla, Unanderra
Planning District 3	Planning Area 7	Berkeley, Cringila, Lake Heights, Port Kembla, Primbee, Warrawong, Windang
	Planning Area 8	Brownsville, Dapto, Haywards Bay, Kanahooka, Koonawarra
	Planning Area 9	Horsley, Penrose, West Dapto

INTRODUCTION

The following profile presents a selection of demographic information on children aged 0–12 years in the Wollongong Local Government Area (LGA). The information is designed to assist Council and other agencies when planning for the provision of services and facilities for the City’s youngest community members. In particular, the profile has been compiled to assist in the development of Play Wollongong. Play Wollongong outlines the strategic approach Council will take over the next ten years to the planning, development and management of play spaces in the LGA based on a set of agreed principles and within resource allocation.

Figures shown in this profile are taken from the last census data in 2011 ABS Census. Forecast figures are for 2024, which represents the ten year lifespan for *Play Wollongong* (2014).

POPULATION FIGURES

The population figure for children aged 0-12 years in the Wollongong LGA in 2011 is 31,644 children. This represents approximately 15.7% of the total population. By 2024 this age group is forecast to increase to 35,177 representing 15.9% of the total LGA population. Based on forecast data, the estimated population of 0-12 year olds in 2014 is 32,098.

COMPARISON POPULATION FIGURES

Wollongong has slightly lower percentage of children 0-12 (15.73%) compared to NSW State and Regional figures (16.38% and 16.32% respectively). When looking at forecast figures for 2024, this percentage is expected to increase to 15.87%. This increase of 0.14% is slightly higher than for the State and Regional benchmark areas over the same period.

Table 1: Current and Forecasted Population Figures by Comparison Areas
At the time of publishing there was no comparative forecast data available for the Illawarra Region

	NSW		Regional NSW		Wollongong LGA	
	2011	2024	2011	2024	2011	2024
0-12 years	1,181,515	1,378,518	431,086	474,300	31,644	35,177
Total Population	7,211,468	8,361,699	2,605,545	2,905,387	201,194	221,620
% of Population	16.38%	16.49%	16.54%	16.32%	15.73%	15.87%
Change 2011-2024		+0.11%		-0.22%		+0.14%

Source: Australian Bureau of Statistics, *Census of Population and Housing 2011 (usual residents)*. Compiled and presented by .id, the population experts.

POPULATION FIGURES FOR 0-12 AGE GROUPINGS

Children aged 0–4 years represent the largest age group of children in the LGA between 0–12 years and will continue to be the largest group of children under 12 years by 2024. Children aged 5–8 years are projected to have the largest increase (15%) with an extra 1,444 children by 2024 (see Table 2). This is higher when compared to the average increase expected across all three age groups which is 11%.

Table 2: Current and Forecasted Child Population Figures for 2011 and 2024 by Age Group

Number of Children Aged 0–12 Years by Age Grouping			
Age Range	2011	2024	Change 2011 to 2024
0-4 years	12,493	13,278	785
5-8 years	9,568	11,012	1,444
9-12 years	9,583	10,887	1,304
Total	31,644	35,177	+3,533

Source: Australian Bureau of Statistics, Census of Population and Housing 2011 (usual residents). Compiled and presented by .id, the population experts.

POPULATION FIGURES BY SUBURBS

Table 3 shows population change by suburb from highest to lowest between 2011 and 2024 for children aged 0–12 years. It shows that the Rural Balance* area is expected to have the greatest increase in children with 1,394 children forecast to live there by 2024. West Wollongong is forecasted to experience the largest decline in the number of children in the area with approximately 131 less children residing in the suburb in 2024.

Table 3: Current and Forecasted Child Population Figures for 2011 and 2024 by Suburb

Number of Children Aged 0–12 Years Per Suburb from Highest to Lowest				
Planning Area	Suburb	2011	2024	Change 2011 to 2024
4	Rural Balance	262	1,394	1,132
2	Unanderra - Kembla Grange	967	1,469	502
3	Horsley	1,581	1,931	350
2	Balgownie - Tarrawanna - Fernhill	1,292	1,572	280
2	Wollongong	1,488	1,730	242
2	Corrimal	971	1,208	237
2	Fairy Meadow	1,029	1,207	178
1	Woonona - Russell Vale	2,261	2,409	148
3	Dapto - Penrose - Brownsville	2,239	2,383	144
3	Koonawarra	688	819	131
2	Figtree	1,942	2,061	119
2	Bellambi	698	814	116
1	Bulli	1,135	1,238	103
2	Keiraville - Mount Keira	678	780	102
3	Warrawong	802	892	90
1	Thirroul	966	1,032	66
3	Port Kembla - Spring Hill	676	733	57
2	Towradgi	461	507	46

3	Lake Heights	549	585	36
3	Berkeley	1,177	1,211	33
2	Mangerton	467	497	30
1	Austinmer	450	476	26
2	Mount Ousley - Mount Pleasant	448	456	8
2	North Wollongong	133	140	7
1	Stanwell Park - Coalcliff - Stanwell Tops	403	379	-24
3	Windang - Primbee	588	564	-24
3	Cringila	393	359	-34
2	Cordeaux Heights - Mount Kembla – Kembla Heights	1,045	1,009	-36
3	Kanahooka	780	743	-37
2	Coniston - Mount Saint Thomas	684	641	-43
2	East Corrimal	489	442	-47
2	Gwynneville	371	316	-55
3	Farmborough Heights	807	744	-63
1	Wombarra - Coledale - Scarborough - Clifton	492	420	-72
1	Helensburgh - Otford	1,346	1,261	-85
2	West Wollongong	886	755	-131
	Total	31,644	35,177	+3,533

Source: Australian Bureau of Statistics, Census of Population and Housing 2011 (usual residents). Compiled and presented by .id, the population experts.

* Rural Balance encompasses the rural areas in the north and west of Wollongong City. Rural Balance includes two areas - a small area to the east of the locality of Helensburgh, and a large area to the east and south-east of the locality of Helensburgh. Rural Balance includes the localities of Avon (part), Avondale, Cataract (part), Cleveland, Cordeaux, Darkes Forest (part), Dombarton, Haywards Bay, Huntley, Lilyvale, Maddens Plains, Marshall Mount, Wongawilli, Woronora Dam (part) and Yallah.

POPULATION FIGURES BY PLANNING DISTRICTS AND PLANNING AREAS

Wollongong Local Government Area is divided into 4 Planning Districts and 10 Planning Areas (refer to Appendix 1 that show maps of these areas). The Planning Districts vary considerably in terms of demographic characteristics and environmental characteristics. The child population and forecast figures for each of the Planning Districts and Planning Areas are illustrated in Table 4.

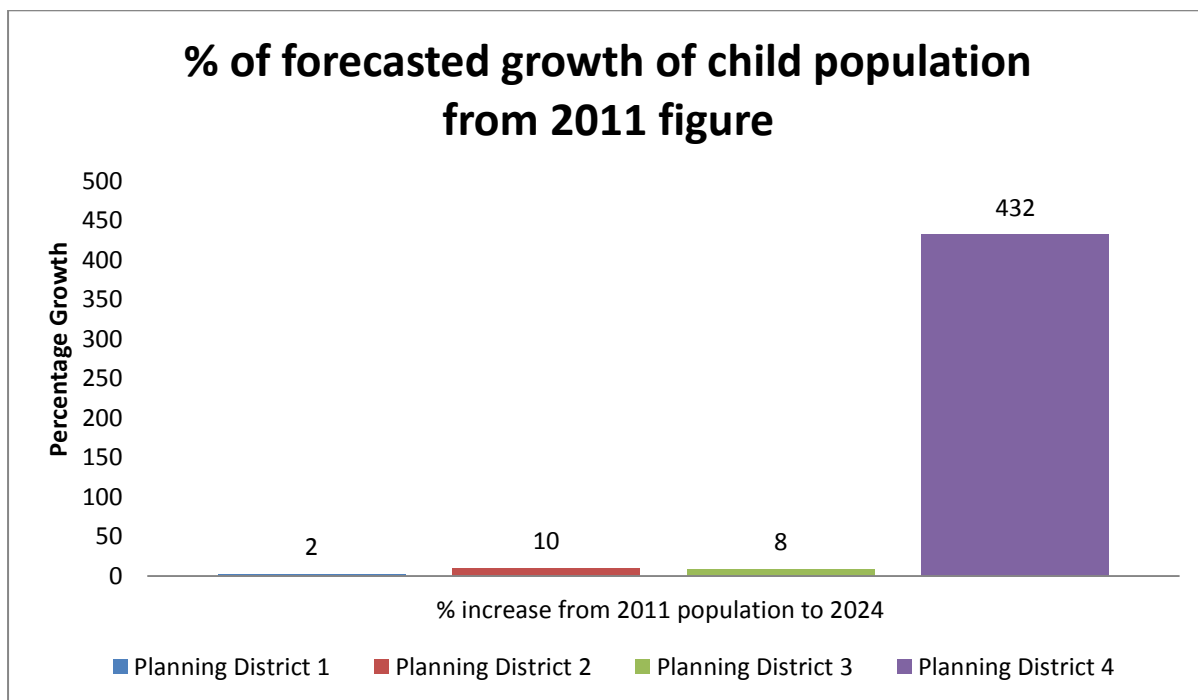
Table 4 shows that in 2011 Planning District 2 had the largest current population of children aged 0-12 years (14,856), followed by Planning District 3 (9,474), Planning District 1 (7,053) and Planning District 4 (262). By 2024, this order will remain; however growth will vary across the Planning Districts (see Map 1 and Map 2).

Between 2011 and 2024, Planning District 2 will experience the largest growth in the number of children aged 0-12 years (1,492 more children). The second highest increase of children will occur in Planning District 4 (1,132); followed by Planning District 3 (746) and lastly Planning District 1 (162). However when comparing percentage increases Planning District 4 (Rural Balance) will experience a significant 432% increase in the number of children 0-12 years between 2011 and 2024, whereas Planning District 1 will only experience a 2% increase (see Figure 1).

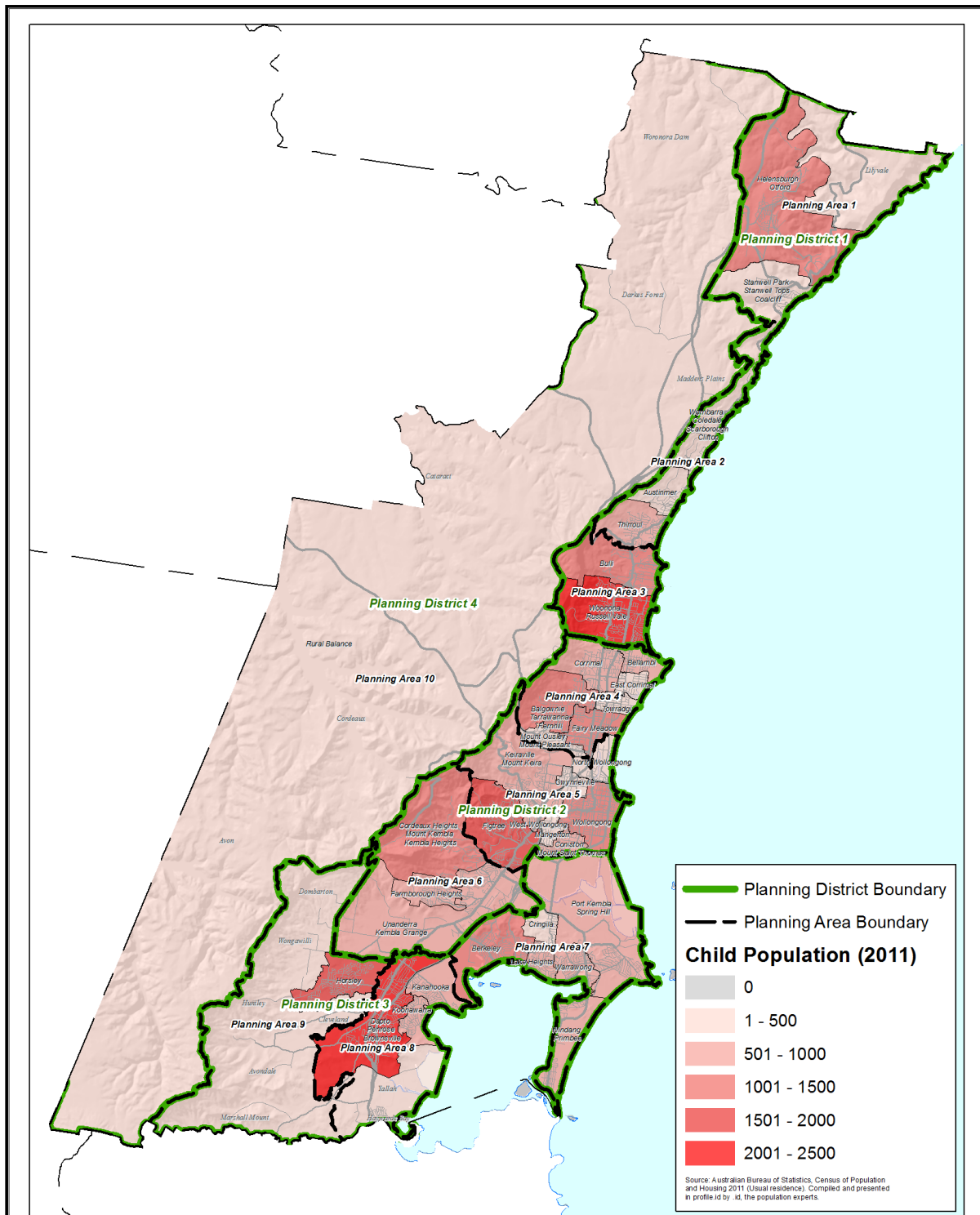
Table 4: Child Population by Planning Districts and Planning Areas

Number of Children Aged 0–12 Years by Planning Areas						
Planning District	Planning Area	Suburb	2011	2024	Change 2011 to 2024	
Planning District 1	1	Helensburgh - Otford	1,346	1,261	-85	
		Stanwell Park - Coalcliff - Stanwell Tops	403	379	-24	
	2	Austinmer	450	476	26	
		Thirroul	966	1,032	66	
		Wombarra - Coledale - Scarborough - Clifton	492	420	-72	
	3	Bulli	1,135	1,238	103	
		Woonona - Russell vale	2,261	2,409	148	
	Subtotal Planning District 1			7,053	7,215	+162
Planning District 2	4	Balgownie - Tarrawanna - Fernhill	1,292	1,572	280	
		Bellambi	698	814	116	
		Corrimal	971	1,208	237	
		East Corrimal	489	442	-47	
		Fairy Meadow	1,029	1,207	178	
		Mt Ousley - Mt Pleasant	448	456	8	
		Towradgi	461	507	46	
	5	Coniston - Mt Saint Thomas	684	641	-43	
		Figtree	1,942	2,061	119	
		Gwynneville	371	316	-55	
		Keiraville - Mt Keira	678	780	102	
		Mangerton	467	497	30	
		Nth Wollongong	133	140	7	
		West Wollongong	886	755	-131	
	6	Wollongong	1,488	1,730	242	
		Cordeaux Heights - Mt Kembla - Kembla Heights	1,045	1,009	-36	
		Farmborough heights	807	744	-63	
	Subtotal Planning District 2			14,856	16,348	+1,492
	Planning District 3	7	Berkeley	1,177	1,211	34
			Cringila	393	359	-34
Lake Heights			549	585	36	
Port Kembla - Spring Hill			676	733	57	
Warrawong			802	892	90	
Windang - Primbee			588	564	-24	
8		Dapto - Penrose - Brownsville	2,239	2,383	144	
		Kanahooka	780	743	-37	
		Koonawarra	688	819	131	
9		Horsley	1,581	1,931	350	
Subtotal Planning District 3			9,474	10,220	+746	
District 4	10	Rural Balance	262	1,394	1,132	
TOTAL			31,644	35,177	+3,533	

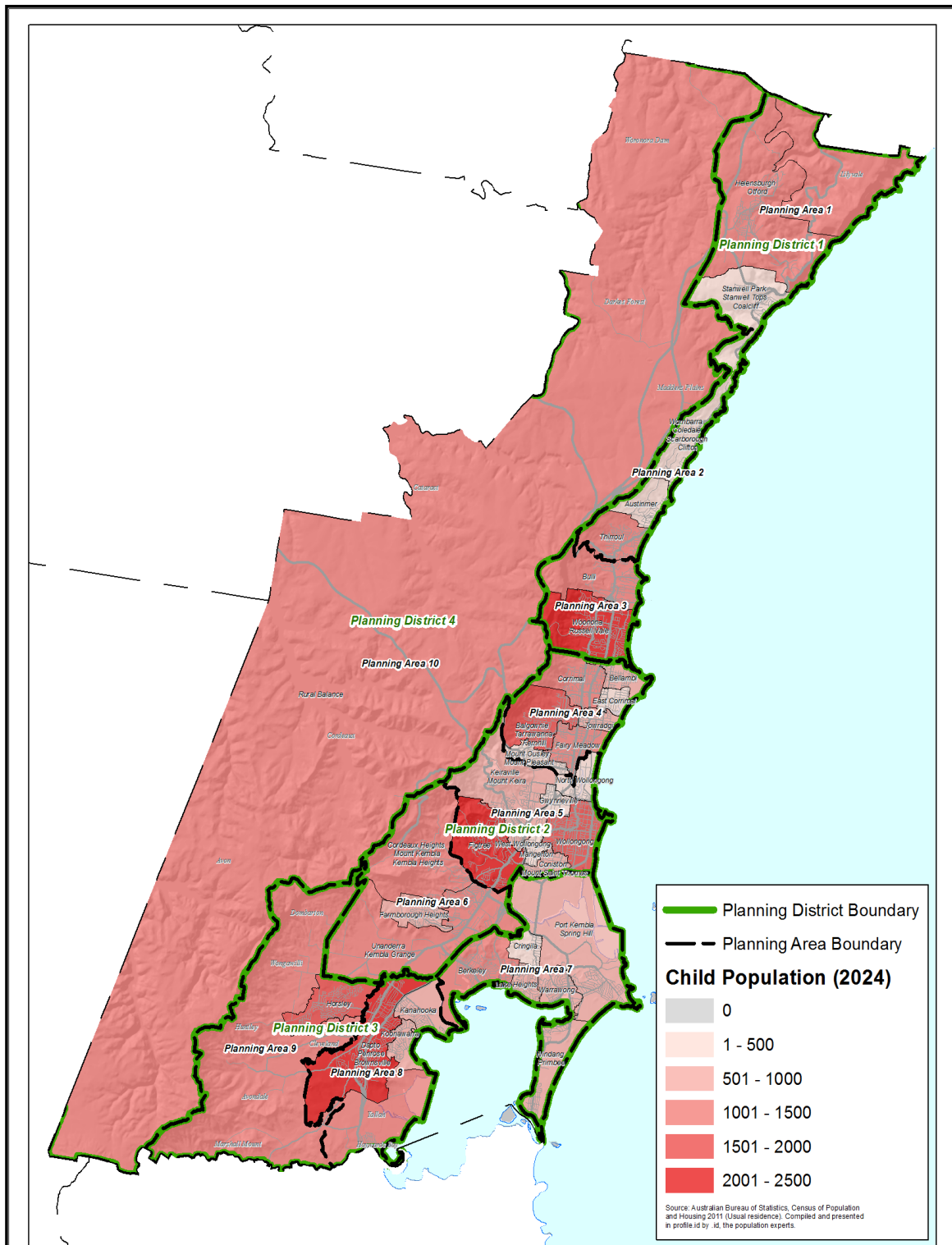
Figure 1: Forecast Growth in Child Population from 2011 to 2024



Map 1: Population (0-12yrs) Figures 2011



Map 2: Population (0-12yrs) Figures 2024





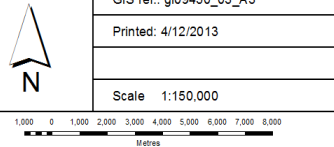
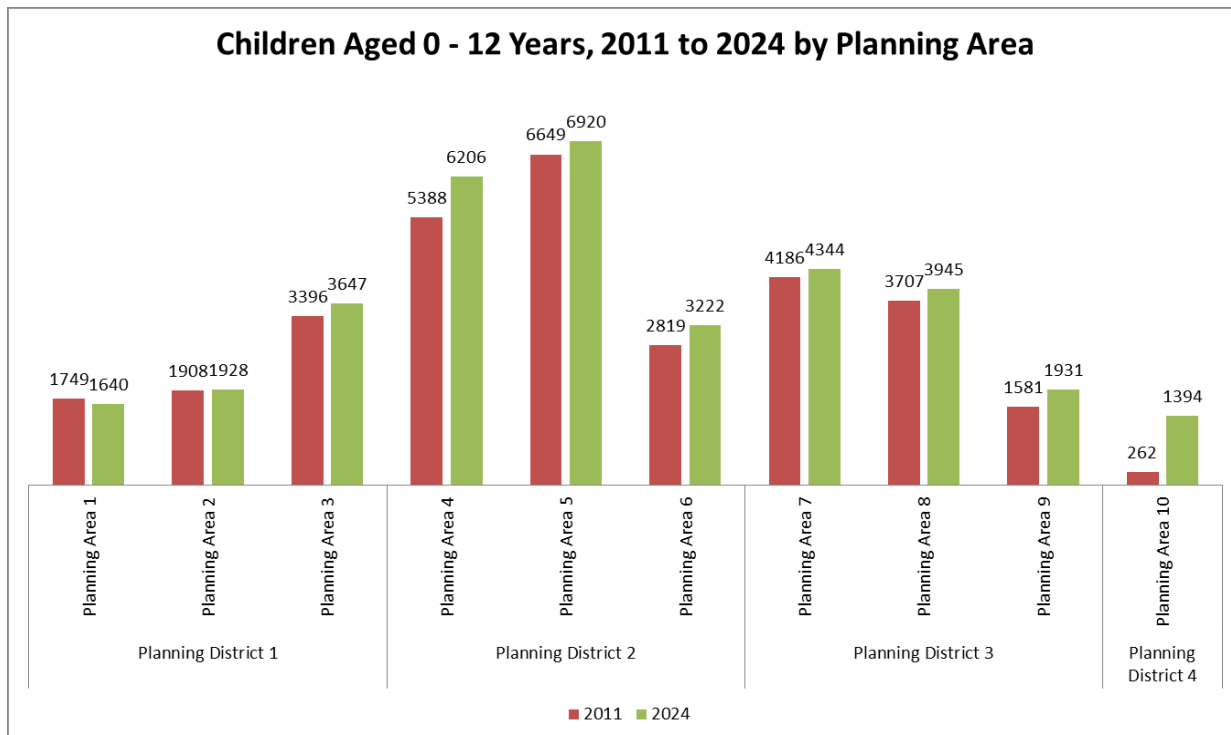
	2024 Forecast Population Figures for Children Aged 0-12 Years	 <small>CERTIFIED QUALITY MANAGEMENT SYSTEM</small>	GIS ref.: gl09450_03_A3 Printed: 4/12/2013 Scale: 1:150,000
	<small>While every effort has been made to ensure the highest possible quality of data, no liability will be accepted for any inaccuracy of the information shown. Copyright © Wollongong City Council, Mapping Services Section. This map may not be reproduced in any form whatever without the express written permission of Wollongong City Council.</small>		

Figure 2 shows the population changes between 2011 and 2024 according to Planning Areas. All Planning Areas will experience an increase in children aged 0–12 years except for Planning Area 1 (Helensburgh, Otford, Stanwell Park, Stanwell Tops, Coalcliff) where a decrease of 109 children is forecast.

Figure 2: Child Population for 2011 and 2024 by Planning Areas



SEIFA – INDEX OF DISADVANTAGE

SEIFA (Socio-Economic Indexes for Areas) Index of Disadvantage measures the relative level of socio-economic disadvantage based on a range of Census characteristics. It is a good place to start to get a general view of the relative level of disadvantage in one area compared to others and is used to advocate for an area based on its level of disadvantage.

The index is derived from attributes that reflect disadvantage such as low income, low educational attainment, high unemployment, and jobs in relatively unskilled occupations. It is one element to consider when planning for the equitable distribution of play spaces and access to services across the LGA.

A higher score on the index means a lower level of disadvantage. A lower score on the index means a higher level of disadvantage.

AREAS OF MOST DISADVANTAGE

Wollongong City scores 979.6 on the SEIFA Index of Disadvantage. Figure 3 indicates the SEIFA Index for Wollongong City LGA compared to national, state and regional benchmark figures. As a region, Wollongong LGA ranks above Regional NSW, but below Illawarra, NSW and National SEIFA scores.

Apart from Bellambi which is situated to the north of the City, social disadvantaged is concentrated in the southern suburbs of the LGA. These suburbs include Warrawong, Cringila, Koonawarra, Port Kembla, Berkeley and Unanderra-Kembla Grange. All these suburbs have a SEIFA Index of less than 900 (see Map 3).

Figure 3: Comparative SEIFA Rankings for Wollongong LGA, 2011

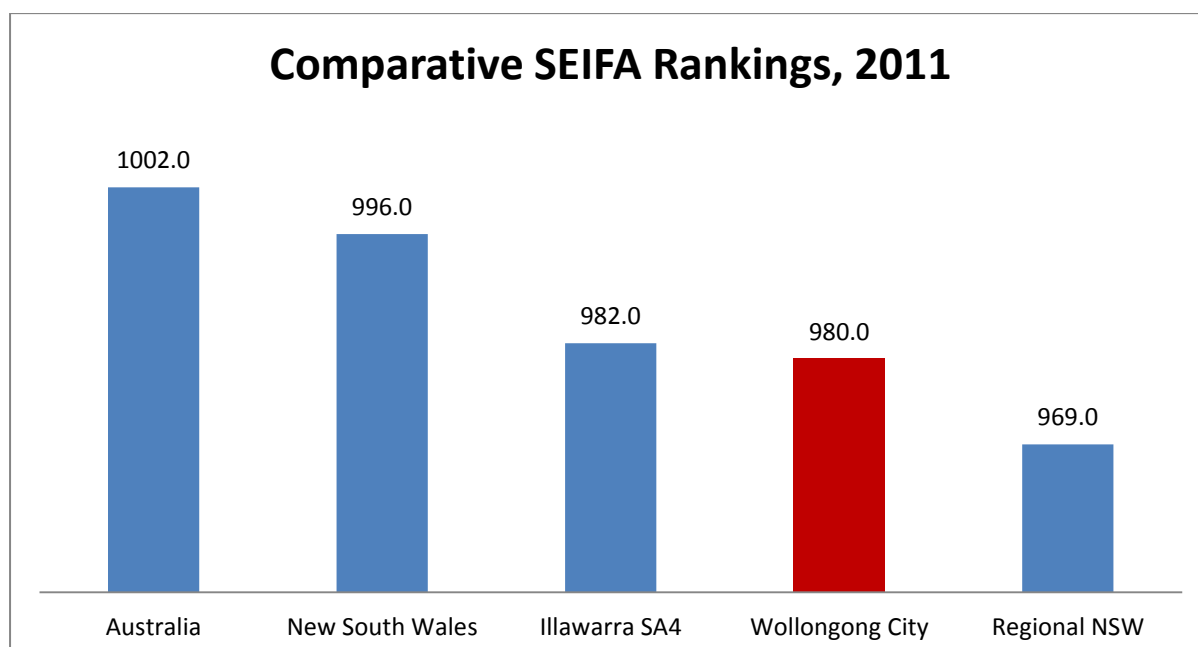


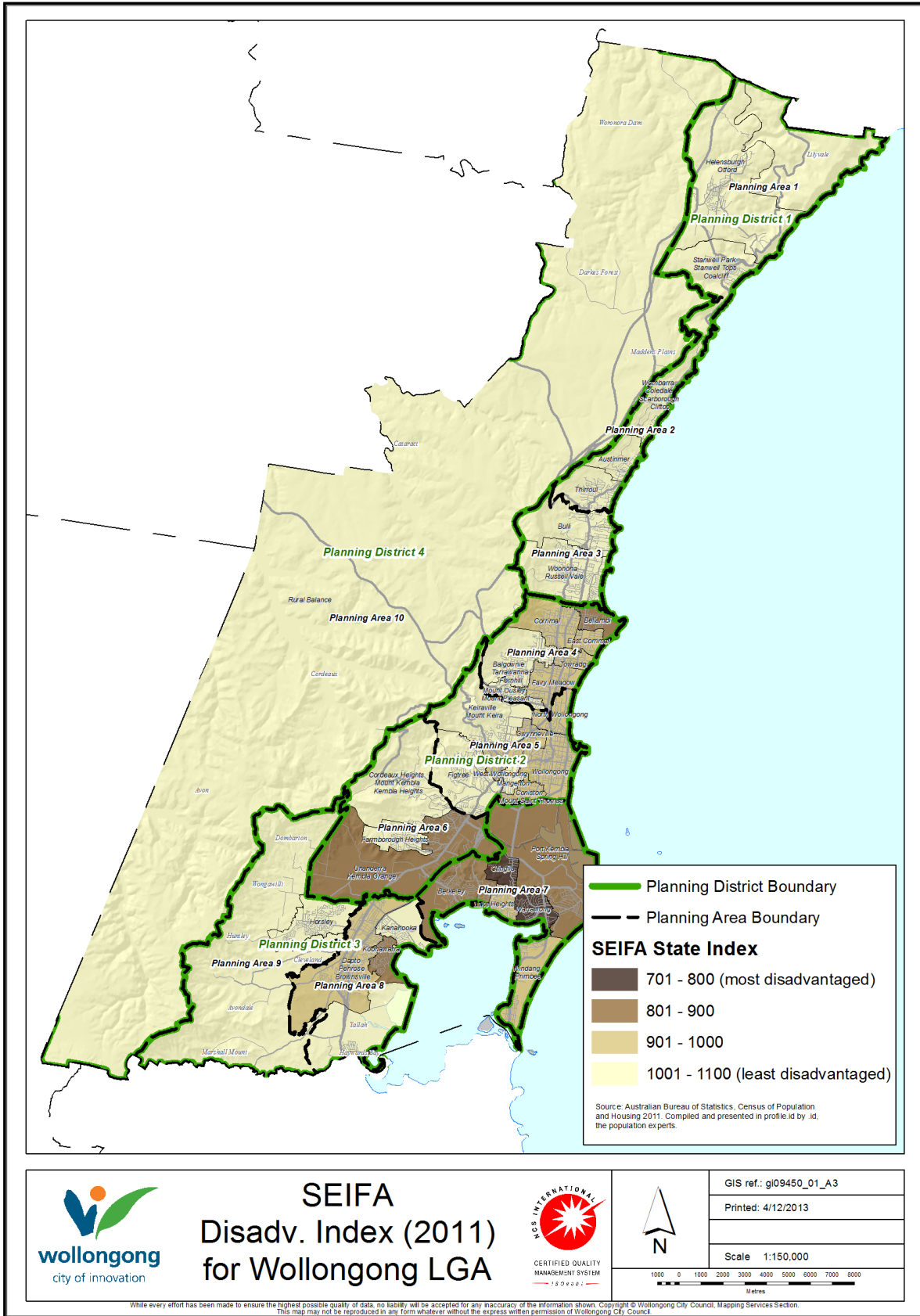
Table 5 represents the SEIFA Index for suburb areas within the Wollongong LGA, from highest (lower level of disadvantage) to lowest (higher level of disadvantage).

Table 5: SEIFA Index by Suburb

Index of Relative Socio-Economic Disadvantage by Suburb		
Planning District	Suburb	2011 index
1	Stanwell Park - Stanwell Tops - Coalcliff	1098
1	Austinmer	1096
2	Cordeaux Heights - Mount Kembla - Kembla Heights	1089
2	Mount Ousley - Mount Pleasant	1086
1	Wombarra - Coledale - Scarborough - Clifton	1078
1	Helensburgh - Otford	1075
1	Thirroul	1062
2	Farmborough Heights	1058
4	Rural Balance	1052
3	Horsley	1049
2	Figtree	1047
2	Keiraville - Mount Keira	1041
1	Bulli	1025
2	Mangerton	1015
3	Kanahooka	1008
1	Woonona - Russell Vale	1007
2	Balgownie - Tarrawanna - Fernhill	1002
2	West Wollongong	1000
2	North Wollongong	990
2	Towradgi	979
2	Corrimal	975
2	East Corrimal	975
2	Wollongong	965
3	Dapto - Penrose - Brownsville	957
2	Coniston - Mount Saint Thomas	953
2	Fairy Meadow	950
2	Gwynneville	941
3	Windang - Primbee	925
3	Lake Heights	904
2	Unanderra - Kembla Grange	885
3	Berkeley	882
3	Port Kembla - Spring Hill	872
3	Koonawarra	848
2	Bellambi	814
3	Cringila	789
3	Warrawong	752

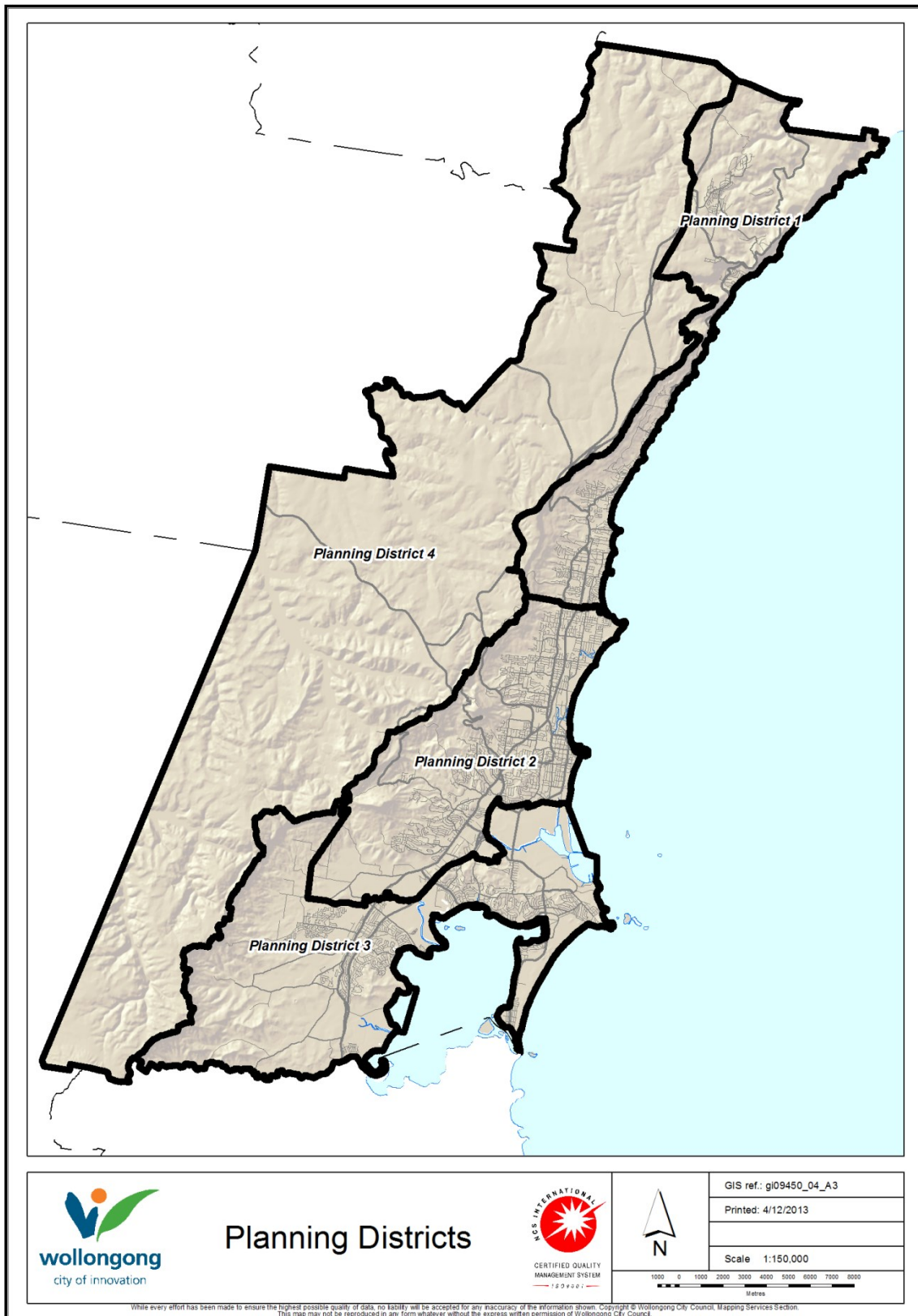
Source: Australian Bureau of Statistics, Census of Population and Housing 2011 (usual residents).
Compiled and presented by .id, the population experts.

Map 3: SEIFA Index by Suburb, Planning Districts and Planning Areas.



APPENDIX 1

Wollongong LGA Planning Districts Boundaries



Wollongong LGA Planning Areas Boundaries

