



*Image: William Beach Reserve, Brownsville*

Wollongong City Council

# Our Wollongong Our Future 2035 Community Strategic Plan

Endorsed 30 June 2025





*Image: Aboriginal Smoking Ceremony,  
Sculpture in the Garden, Wollongong Botanic Garden*

## Acknowledgement of Country

We acknowledge the Traditional Custodians of the land on which our city is built, Dharawal Country. We recognise and appreciate their deep connection to this land, waters and the greater community. We pay respect to Elders past, present and those emerging and extend our respect to all Aboriginal and Torres Strait Islander people who call this city home. We recognise Aboriginal and Torres Strait Islander people as the first people to live in the area. We respect their living cultures and recognise the positive contribution their voices, traditions and histories make to the city.



## Contents

Lord Mayor's message	4
About Our Wollongong Our Future 2035	6
Vision and goals	8
What is a Community Strategic Plan?	10
Who is responsible for the Community Strategic Plan?	11
Community snapshot	12
What our community told us	14
Our Wollongong Our Future 2035 summary	16
How to interpret this document	19
Goal 1 - We are a sustainable and climate resilient city	20
Goal 2 - We have well planned, connected, and liveable places	26
Goal 3 - We foster a diverse economy, and we value innovation, culture, and creativity	34
Goal 4 - We have a healthy, respectful, and inclusive community	40
The United Nations Sustainable Development Goals	47
Strategic planning framework	48
Council's Supporting Document Framework	49
Supporting document roadmap	50
Implementing the Community Strategic Plan	52
Our engagement principles	53
Our sustainability commitment	54





Image: Coledale Beach

## Lord Mayor's message

We don't need a crystal ball when it comes to planning what our community wants for our city's future. That's because we have heard your thoughts, hopes, and ambitions for Wollongong's future and have distilled them into this Community Strategic Plan.

This aspirational document sits at the top when it comes to Council's hierarchy of strategic documents. To take inspiration from Tolkien, it's the one document to rule them all, as this is the roadmap Council uses to guide all our decision-making and to ensure we're planning ahead to achieve the community's desired future.

This whole-of-community strategy offers a path for other stakeholders, investors, businesses, government agencies and community groups who want to make sure their individual efforts are in line with what residents want for Wollongong's future.

We've had a Community Strategic Plan for many years, and they're updated each term of Council. In Our Wollongong Our Future 2035 we've taken onboard your feedback and updated the goals.

These goals reflect our community's main priorities and as our population continues to grow, we'll aim to work with the community and our partners to reach these goals for the Wollongong of the future.

While housing is a national issue, we're keen to use the tools we have at our disposal as a local government to influence the housing pipeline and ensure we've got the right type of housing option in the right location. We'll continue to plan for our city's growth in a way that is sustainable, improves community life and cares for the local environment which we value so much.

We will continue to protect and preserve the escarpment and our beaches and work to manage the impact of climate change through urban greening initiatives, invest in the implementation of greenhouse gas emission reduction strategies and focus on sustainable waste management, including for the city's 88,000 domestic residences.

With the increasing risk of significant storm and flooding events, we'll maintain our investment in stormwater management and infrastructure upgrades while also strongly advocating for funding to support prevention and recovery.

Transport will continue to be a key priority for Wollongong, particularly with the projected population increase for us and our neighbouring local government areas. This Council will continue to work with stakeholders like Transport for NSW on the best outcomes for our community when it comes to improvements in roads, public transport and active transport.

Of course, while each of these items are important, lifestyle is also a priority. That's why we'll continue to invest in local suburbs by building footpaths and cycleways, deliver much-loved community events like New Year's Eve and build community facilities like the new integrated community centres and libraries in Helensburgh and Warrawong. It's also why we're investing in the city's ageing infrastructure so it's fit-for-purpose into the future.

I encourage everyone to take the time to look through the Our Wollongong Our Future 2035 Community Strategic Plan. This is your plan, for your city. By working together collaboratively we can deliver a great space for everyone to live their best lives.

**Lord Mayor of Wollongong  
Councillor Tania Brown**





*Image: Children enjoying Nature Shake Event at Wollongong Botanic Garden*



# About Our Wollongong Our Future 2035

The Wollongong Local Government Area is made up of the natural and built environment, its history, and the people who live, work, and play in it. We need to plan, review and adapt in order to meet the needs of both the current and future community. The Community Strategic Plan is a shared community vision to inform action over the next 10 years.

This Community Strategic Plan has been informed by more community members and more data than ever before. The Community Strategic Plan has been developed using feedback from our engagement activities and representative surveys about what the community's vision and goals are for Wollongong. The recent engagement saw over 4,485 voices heard.

Global, Federal, State and Regional Plans have also been considered, as well as discussions at workshops with State and Federal agencies, businesses and community groups.

We have also considered other recent feedback since the previous Community Strategic Plan was developed to give a full picture of what is valued by the community. This includes representative surveys, consultations and engagement projects, as well as feedback on the development of specific strategies and plans. The combined feedback achieves a total of 10,343 current and previous voices heard to inform this Community Strategic Plan.



Council adopted the State of Our City Report in November 2024, that reported progress toward implementing the previous Community Strategic Plan, Our Wollongong Our Future 2032. This included consideration of progress toward the Community Indicators, and broader influences including future opportunities, challenges and trends affecting the community now and into the future. The full State of Our City Report can be viewed on Wollongong City Council's website.

All of this above information, data and research and deliberation has led to a revised vision, goals, objectives and strategies outlining how we will work together to achieve the community's aspirations for the future. The Our Wollongong Our Future 2035 Community Strategic Plan is translated into services and activities in Council's Delivery Program and Operational Plan.

A photograph of a woman with long blonde hair, wearing a patterned long-sleeved shirt and dark shorts, sitting on a white bicycle. She is looking out over the ocean at sunset. In the foreground, there is a tall, thin coastal tree with feathery leaves. The background shows a grassy hillside and the ocean under a warm, golden sky.

## Our Wollongong Our Future

On Dharawal Country, from the mountains to the sea, we value our natural environment, we respect each other, our past and future. We will be a sustainable, connected, vibrant, and innovative city, with a diverse economy.

*Image: Austinmer sunrise*





*Image: Lunar New Year*

## Community Vision

On Dharawal Country, from the mountains to the sea, we value our natural environment, we respect each other, our past and future. We will be a sustainable, connected, vibrant, and innovative city, with a diverse economy.





## Community Goals

Wollongong is **Sustainable** **Connected** **Vibrant** **Inclusive**

We are a sustainable and climate resilient city

---

We have well planned, connected, and liveable places

---

We foster a diverse economy, and we value innovation, culture, and creativity

---

We have a healthy, respectful, and inclusive community

---





Image: Safer Cities MacCabe Park

## What is a Community Strategic Plan?

A Community Strategic Plan is an aspirational document that outlines the community's desired future for the Wollongong Local Government Area. The Plan identifies the community's main priorities and strategies for achieving these goals. It outlines what success looks like by creating a roadmap for achieving the community's desired outcome. The Plan is therefore an important reference for stakeholders, investors, businesses, community groups, and residents, so that together, we are all working toward the same goals. For Wollongong City Council, it is the central reference point for planning and prioritising services and resources for the community in the Delivery Program. The Community Strategic Plan is carefully prepared to balance the desires of the community, with population growth projections, current and future challenges and gives consideration to global, federal and state priorities, as well as regional plans.

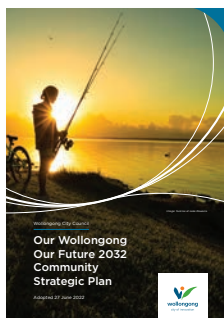
Wollongong  
2022 Community  
Strategic Plan



Our Wollongong  
2028 Community  
Strategic Plan



Our Wollongong  
Our Future 2032  
Community Strategic Plan



Our Wollongong  
Our Future 2035  
Community Strategic Plan

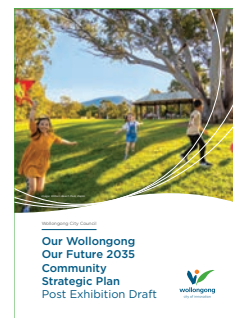






Image: Culture Mix Festival, Wollongong

## Who is responsible for the Community Strategic Plan?

Wollongong City Council prepares the Community Strategic Plan working with the community and partners on behalf of the community. While Council has a custodial role in preparing the Community Strategic Plan on behalf of the Local Government Area, it is not wholly responsible for its implementation. Other partners, such as state agencies, non-government organisations, businesses, industry and community groups may also be involved in the delivery of the Plan.

This Plan outlines those stakeholders responsible for contributing to the realisation of the goals. It also outlines the types of actions the community might undertake to achieve the desired future. This Plan reflects our commitment to working with others to shape the future of the Wollongong Local Government Area.

We will continue to build strong partnerships, advocate for the benefit of the city, and leverage our relationships to seek co-investment, grants and contributions to the benefit of our community. Key partnerships include those with the Federal, State, Regional and Local Government sectors, businesses and non-government organisations. Wollongong City Council has many diverse and complex roles and levers we can use to implement and influence change for the future.

The first role of the Council is to act as the custodian of the development and reporting of the Plan. Council may also have a role in the delivery of the strategies that work towards the goals and objectives.

Wollongong City Council is a:

**Service Provider** Council provides direct services to meet the needs of the community.

**Partner** Council partners with government agencies or other organisations and the broader community to achieve shared goals and outcomes.

**Advocate** Council will champion community priorities by seeking funding and/or legislative reform to achieve the best possible outcomes for the community.

**Regulator** Council will fulfill its statutory obligations, ensuring compliance with relevant laws and planning controls.





Wollongong is said to originate from the Aboriginal word Woolyungah, meaning Five Islands.

# Community Snapshot

**The Wollongong Local Government Area (LGA) has an area of 714km<sup>2</sup> and is located on Dharawal Country. It is divided into three wards with four Councillors elected from each Ward. The Lord Mayor is elected by all voters across all three Wards.**

## Community Wellbeing

A 2024 Community Wellbeing Survey found that most people in Wollongong LGA were satisfied with:

- Their overall life (87%)
- Their personal safety (86%)
- Their relationships (86%)
- Their standard of living (84%)<sup>1</sup>

## Population Growth

In 2025, Wollongong was estimated to have 223,411 residents. By 2035, this number is predicted to rise to 251,780 (a 12.7% increase), mainly due to net migration to the Local Government area.<sup>2</sup>

## Age

In 2021, the median age was 39 years, and life expectancy was 82.5 years.<sup>3</sup>

## Environment

Wollongong City Council actively manages approximately 286 hectares of natural areas, and 46 hectares of asset protection zones. There are 68 volunteer groups contributing efforts to Bushcare, Dunecare and Fiready programs.<sup>7</sup>

Wollongong Community Emissions reduced 20% between 2016 and 2022, on track for our 50% reduction target by 2030 (Excluding Industrial Processes and Product Use).

## Economy and Employment

In 2023-2024, Wollongong's Gross Regional Product was \$17.6B, approximately 60% of the Illawarra Shoalhaven Region.<sup>5</sup>

In 2023-2024, there were 102,957 local jobs in the Wollongong Local Government Area, with 8% growth in the five years to 2024.<sup>6</sup>

In 2021, the median household income was \$1,637 per week, lower than the NSW average of \$1,849.<sup>3</sup>





Image: Wollongong City Beach

### Diversity and Language

In 2021, 6,944 people (3.2%) identified as Aboriginal and/or Torres Strait Islander. 74.9% of the population were born in Australia, 4.1% not stated, and 21% were born overseas. The top five countries of birth for those born overseas were: United Kingdom, North Macedonia, Italy, India, and New Zealand. In 2021, English was stated as the only language spoken at home by 79.8% of the population. The four most common languages other than English were: Macedonian, Arabic, Italian and Mandarin.<sup>3</sup>

### Housing Costs

In 2024, the median house price was \$1,055,000 and unit price was \$715,000. Weekly rent was \$700 for a house and \$500 for a unit. Only 50.6% of rentals were considered affordable.<sup>4</sup>

### Homes, Households and Homelessness

In June 2024, there were 91,899 dwellings in Wollongong. By 2035, this is expected to increase to 107,617. The areas expected to see the greatest increase in new homes are Wollongong CBD, Dapto and Dombarton.<sup>2</sup> In 2021, 66.3% of residents lived in separate houses, 20.5% lived in medium density dwellings, and 12.3% in high density dwellings. 60.9% of residents had a mortgage or fully owned their home, 23.1% of residents were renting privately and 6.8% lived in social housing.<sup>3</sup> 29.3% of household were couples with children, 11.2% were one- parent households and 25.4% were people living alone with nearly half aged 65+.<sup>3</sup> 1,255 people were experiencing homelessness.<sup>3</sup>

### Education

In 2021, 12,670 residents (5.9%) attended university, and 5,872 (2.7%) were in TAFE or vocational training.<sup>3</sup>

### Transport

In 2024, driving a car was the dominant method for all purposes. 86% of residents living in the LGA commuted to work by car, motorcycle or scooter, 8% caught public transport, and 6% walked or rode a bicycle.<sup>1</sup>

Sources  
<sup>1</sup> Wollongong City Council, Community Wellbeing Survey, 2024  
<sup>2</sup> Population and household forecasts, 2021 to 2046, prepared by .id, 2025  
<sup>3</sup> Australian Bureau of Statistics, 2021 census. Note at the time of publication this was the latest census data.  
<sup>4</sup> PropTrack, Compiled and presented by .id, 2024. Rentals at 30% of gross income for very low, low and moderate income households.  
<sup>5</sup> National Institute of Economic and Industry Research (NIEIR), 2024  
<sup>6</sup> Australian Bureau of Statistics, Labour force survey, 2024  
<sup>7</sup> Wollongong City Council, Asset Management Plans, 2025  
<sup>8</sup> Snapshot Climate, Community Emissions Tool, 2024.





Image: Culture Mix, Wollongong CBD

## What our community told us...

An extensive engagement process was undertaken to enhance engagement outcomes and ensure the Community Strategic Plan is a true reflection of the community's aspirations and priorities. A range of methods were used to build awareness and provide our diverse community with the opportunity to let us know what's important to them.

Method highlights include:

- Accessible information
- Reply paid postcards distributed to all households
- Community Circle Kits
- Interactive engagement at events
- Targeted workshops
- Children's drawing sheets
- Surveys
- Plain English Community Strategic Plan Summary
- Easy Read Community Strategic Plan
- Information presentations
- Online feedback options
- Interactive pop-ups

### In Phase 1, we asked our community:

1. What do you want our community to look and feel like in 10 years?
2. What would make Wollongong Local Government Area a better place for everyone?

### Phase 1 - Listening to Our Community

#### Method highlights:

Accessible information  
Postcards distributed to all households  
Community Circle Kits  
Interactive engagement at events  
Targeted workshops  
Children's drawing sheets



18 October -  
18 November  
2024

### Phase 2 - Checking In

#### Method highlights:

Our Wollongong Our Future Engagement Snapshot  
Plain English Community Strategic Plan - summary  
Easy Read Community Strategic Plan  
Information presentations  
Online feedback form  
Interactive maps



9 April -  
7 May  
2025

**10,343 previous and current voices heard across Phase 1 and 2.**





## What our community told us



### Environment

- Protect and add green space and trees
- Invest in renewable energy
- Respond to climate change and increase resilience



### Active Transport

- Improve safety
- Increase and promote the network
- Increase accessibility



### Transport

- Improve public transport and expand the Gong Shuttle service
- Provide parking solutions
- Build a safe and sustainable network



### Development

- Avoid over development
- Preserve and protect environment and heritage
- Plan sustainable growth



### Local Economy

- Focus on creating local jobs
- Foster sustainable and cultural tourism
- Enhance dining, shopping and nightlife options
- Invest in revitalisation and vibrancy



### Wellbeing

- Enhance public space safety
- Increase access to health services
- Increase and promote sustainable food systems
- Involve community in decision-making



### Inclusive and Accessible

- Create equitable employment opportunities
- Provide accessible information
- Improve digital inclusion



### Housing

- Ensure diverse and sustainable housing options
- Increase affordable housing options
- Address homelessness



### Arts and Culture

- Provide events and spaces
- Support creatives
- Showcase diverse cultures



### Education

- Build more schools
- Provide equitable access to tertiary education
- Diversify educational approaches



### Heritage

- Value our heritage
- Protect buildings
- Recognise and respect Aboriginal heritage



### Recreation

- Maintain and increase open and recreational space/s
- Invest in maintenance of parks and beaches
- Improve sporting facilities
- Provide accessible recreational options



### Community Services, Facilities and Spaces

- Increase services provided by libraries
- Maintain places and programs for social connection
- Provide inclusive and accessible community spaces



# Our Wollongong Our Future 2035 Community Strategic Plan

## Goal 1 | We are a sustainable and climate resilient city

1.1 The community is actively involved in the expansion, improvement, and preservation of our waterways, green corridors, and other natural areas connecting the escarpment to the sea.

1.2 Partner with Aboriginal and Torres Strait Islander communities and organisations in the way we care for the environment.

1.3 Manage and improve the cleanliness, health, biodiversity of land and water including creeks, lakes, waterways and oceans.

1.4 Increase our resilience to natural disasters and ability to adapt to a changing climate, to protect life, property, and the environment.

1.5 Work together to achieve net zero greenhouse gas emissions, and mitigate the impacts of climate change.

1.6 Reuse, repurpose, redirect, or recycle, to drive a circular economy, and reduce the amount of waste going to landfill.

1.7 Manage our coastal environments, including Lake Illawarra, to protect and enhance environmental sustainability, social, cultural, and economic values.

## Goal 2 | We have well planned, connected, and liveable places

2.1 Urban areas are planned and well maintained to provide a healthy and safe environment for our community to live, work and play.

2.2 Facilitate ecologically sustainable development that considers the current and future needs of our community and environment.

2.3 Deliver high quality, fit for purpose and sustainable infrastructure to support a growing and resilient city.

2.4 Housing provides choice, affordability, and liveability for our diverse community.

2.5 Integrated services are provided to residents in need of urgent shelter.

2.6 The growth of West Dapto urban release area is well planned with facilities, spaces and educational institutions to support the growing community.

2.7 Develop and implement programs and projects that achieve proactive heritage management, education and promotion.

2.8 Plan, advocate for, and provide affordable, accessible and sustainable multi-modal transport networks. This includes continuation and expansion of the Gong Shuttle, and active transport infrastructure to meet the community's needs.

2.9 Effective and integrated regional transport with a focus on road, bus, rail and freight movement (including the port of Port Kembla).

2.10 Plan and provide sustainable infrastructure for safe and liveable places integrated with the environment and accessible to key transport routes.

2.11 Advocate for strong transport links within the Local Government Area, and connections to Greater Sydney, particularly Western Sydney (including the Aerotropolis), and the Illawarra Region, to provide physical and economic opportunities.

2.12 Improve active transport links and connectivity to our unique places and spaces, including marine access along the Local Government Area and accessibility from the Central Business District to the foreshore.

2.13 Maintain the service levels of our roads, footpaths, cycleways, and shared paths to an acceptable standard.

2.14 Plan and deliver an accessible, safe, clean and inviting public domain.

2.15 Community transport options for frail older people, people with disabilities, and the transport disadvantaged, are promoted and available.

Image: Lake Illawarra  
Photo Liam Pozz (Unsplash)



### **Goal 3 | We foster a diverse economy, and we value innovation, culture, and creativity**

3.1 Support educational and employment opportunities that retain young people and local talent, attract new workers and provide opportunities for the unemployed.

3.2 Continue to diversify and grow the Wollongong economy to enhance its economic and employment role in the Region recognising opportunities and challenges in South-West Sydney.

3.3 Increase and attract new business investment and enterprise to Wollongong while supporting and growing existing local businesses.

3.4 Continue to build Wollongong CBD as a vibrant employment precinct with an active evening economy.

3.5 Encourage an innovative and diverse economy, which drives entrepreneurship, research capability and commercialisation in the Wollongong Local Government Area.

3.6 We are leaders in sustainable industries and support a transition to a low-carbon and clean energy future.

3.7 Support key growth sectors to assist in the ongoing transition of Wollongong's economy, including Port Kembla industrial lands.

3.8 Promote the Wollongong Local Government Area as an event, conference and visitor destination.

3.9 Enable signature events and festivals where communities and visitors can gather and celebrate.

3.10 Promote and support tourism opportunities through planning controls and infrastructure.

3.11 Using community art and cultural development practices, our places and spaces reflect the creativity, history, and identity of our people.

3.12 Promote museums and galleries as part of the cultural landscape.

### **Goal 4 | We have a healthy, respectful, and inclusive community**

4.1 Accessible and appropriate health care services are available to the community.

4.2 Provide a variety of quality and accessible public spaces and opportunities for sport, play, leisure, recreation, learning and cultural activities in the community.

4.3 Provide safe, well-maintained and accessible beaches and aquatic facilities, and promote water and beach recreation safety to residents and visitors.

4.4 Plan for, and provide opportunities for inclusion for people of all abilities in our community.

4.5 Healthy, active ageing programs are provided and promoted in partnership with government agencies and community organisations.

4.6 Work together to reduce crime, and foster a safe, and resilient community.

4.7 Work towards enabling all people in our community to have access to safe, nutritious, affordable, and sustainably produced food.

4.8 Provide our community with equitable services, access to education, and information to help them make informed decisions.

4.9 Provide programs, services and places including libraries and facilities for social cohesion, cultural activities and community belonging.

4.10 Work in partnership to reduce inequity and build on opportunities to strengthen vulnerable communities.

4.11 Partner with our diverse communities, including Local Aboriginal and Torres Strait Islander, and Culturally and Linguistically Diverse communities on programs and projects.

4.12 In the spirit of reconciliation, build awareness and understanding of Local Aboriginal and Torres Strait Islander culture, heritage and histories.

4.13 Support and strengthen the local community services sector.

4.14 Council demonstrates responsible leadership that is customer focused, demonstrates respect and inclusion, and uses resources that are managed effectively to ensure long-term sustainability.





*Image: Safer Cities MacCabe Park*

# How to read this document

Goal - define what the community's long-term vision will look like once it is realised.

United Nations Sustainable Development Goals - Global Goals relevant to each community goal.



## Goal 1 | We are a sustainable and climate resilient city

### Objectives

We are leaders in climate change mitigation and adaptation.

Our natural environments are protected, and our resources are managed sustainably.

We will work together to reduce emissions and the effects of a changing climate in an equitable way.

Objectives - A series of sub-goals to achieve the Community Goals and articulate where our community wants to be in 2035.

Strategies - outline how the vision and goals will be achieved.

Services - Council services involved in delivering each strategy.

### Strategies

#### How will we get there?

#### Who will make this happen?

#### What is Council's Role?

#### Council's Service/s

1.1 The community is actively involved in the expansion, improvement, and preservation of our waterways, green corridors, and other natural areas connecting the escarpment to the sea.

Wollongong City Council  
State Government  
Businesses

Who - The organisations or persons responsible for implementing the strategy.

**Advocate**  
**Partner**  
**Regulator**  
**Service Provider**

Council's Role - Wollongong City Council's role is listed and may include Service Provider, Partner, Advocate or Regulator.

Botanic Garden and Annexes  
Environmental Services  
Floodplain Management and Stormwater Services  
Natural Area Management  
Transport Services

### Indicator

### Target/Desired Trend

### Baseline Data (2021)

### Trend Data (2024)

Percentage reduction in community greenhouse gas emissions (excludes industrial and fugitive safeguard emissions) \* Latest data from 2022

50% by 2030

N/A

20%\* since 2016 baseline

Community Indicators - Measure our progress toward achieving the goal. They may be the responsibility of more than one stakeholder. These indicators are tracked and will be reported in the State of our City Report.



# Goal 1 | Sustainable

We are a sustainable and climate resilient city

## Community Feedback

“

“Wollongong will be renowned as an eco-friendly city, with abundant green spaces integrated throughout urban areas. The city will be a leader in renewable energy adoption, with green technologies prominently featured in the cityscape.”

“Focus on environmental sustainability, including electric buses and reduced car dependency.”

“A place for people and nature with a thriving circular economy fuelled entirely by renewable energy.”

“Wollongong will not just look green, but will embody environmental consciousness in all aspects of city life. This includes sustainable urban planning, zero-waste initiatives, and a robust public transportation system powered by renewable energy.”

”

“Leadership in climate action, waste services that are easy to use and incentivise waste avoidance and minimisation.”

“Green, healthy, resilient, leading Australia in sustainable living. A place where trees, footpaths, and cycleways line every street, most houses are fully electrified, and the most vulnerable are provided for with sustainable housing.”



*Image: Local residents in their garden*

## How can I contribute to the delivery of our goals?

- Plant a vegetable garden.
- Reuse, recycle and repurpose.
- Join a bushcare or environmental group.
- Learn about your local area biodiversity and heritage.
- Reuse shopping bags.
- Buy second hand clothes or furniture.
- Take your unwanted clothes and furniture to op shops.
- Reduce waste to landfill through recycling and Food Organics Garden Organics (FOGO) services.
- Keep up to date with Wollongong City Council's sustainability programs and information channels through the website.

## Really keen to do more...

- Upgrade to LED lighting.
- Transition existing appliances to electric alternatives.
- Install solar panels.
- Install battery storage.
- Develop a waste and carbon management plan for your business.
- Choose a sustainable super fund or invest in sustainable companies.





## Goal 1 | We are a sustainable and climate resilient city

### Objectives

We are leaders in climate change mitigation and adaptation.

Our natural environments are protected, and our resources are managed sustainably.

We will work together to reduce emissions and the effects of a changing climate in an equitable way.

### Strategies

How will we get there?	Who will make this happen?	What is Council's Role?	Council's Service/s
1.1 The community is actively involved in the expansion, improvement, and preservation of our waterways, green corridors, and other natural areas connecting the escarpment to the sea.	Wollongong City Council State Government Businesses Non-Government Organisations Environmental Groups Community Private Landowners	<b>Advocate</b> <b>Partner</b> <b>Regulator</b> <b>Service Provider</b>	Botanic Garden and Annexes Environmental Services Floodplain Management and Stormwater Services Natural Area Management Transport Services
1.2 Partner with Aboriginal and Torres Strait Islander communities and organisations in the way we care for the environment.	Wollongong City Council State Government Businesses Non-Government Organisations Educational Institutions Environmental Groups Community Groups	<b>Advocate</b> <b>Partner</b>	Botanic Garden and Annexes Environmental Services Natural Area Management
1.3 Manage and improve the cleanliness, health, biodiversity of land and water including creeks, lakes, waterways and oceans.	Wollongong City Council State Government Businesses Non-Government Organisations Environmental Groups Private Landowners Community	<b>Advocate</b> <b>Partner</b> <b>Regulator</b> <b>Service Provider</b>	Environmental Services Floodplain Management and Stormwater Services Natural Area Management

How will we get there?	Who will make this happen?	What is Council's Role?	Council's Service/s
1.4 Increase our resilience to natural disasters and ability to adapt to a changing climate, to protect life, property, and the environment.	Wollongong City Council State Government Environmental Groups Community Private Landowners	<b>Advocate</b> <b>Partner</b> <b>Service Provider</b>	Emergency Management Environmental Services Floodplain Management and Stormwater Services Infrastructure Strategy and Delivery Land Use Planning Natural Area Management Transport Services Waste Management
1.5 Work together to achieve net zero greenhouse gas emissions, and mitigate the impacts of climate change.	Wollongong City Council State Government Businesses Educational Institutions	<b>Advocate</b> <b>Partner</b> <b>Regulator</b> <b>Service Provider</b>	Development Assessment Environmental Services Infrastructure Strategy and Delivery Waste Management
1.6 Reuse, repurpose, redirect, or recycle, to drive a circular economy, and reduce the amount of waste going to landfill.	Wollongong City Council State Government Businesses Non-Government Organisations Environmental Groups Community	<b>Partner</b> <b>Service Provider</b> <b>Regulator</b>	Environmental Services Waste Management
1.7 Manage our coastal environments, including Lake Illawarra, to protect and enhance environmental sustainability, social, cultural, and economic values.	Wollongong City Council Shellharbour City Council State Government Environmental Groups Community	<b>Advocate</b> <b>Partner</b> <b>Regulator</b> <b>Service Provider</b>	Aquatic Services Environmental Services Land Use Planning Natural Area Management Property Services





Image: Local resident with electric scooter

## Community Indicators

Goal 1   We are a sustainable and climate resilient city			
Indicator	Target/Desired Trend	Data (2021)	Current Data (2024)
1.1 Percentage reduction in community greenhouse gas emissions (excludes industrial and fugitive safeguard emissions) <i>* Latest data from 2022</i>	50% by 2030	Not available	20%* since 2016 baseline
1.2 Percentage reduction in Council's greenhouse gas emissions	100% by 2030	Not available	13% reduction since 2021
1.3 Percentage of residents who have taken or continue to take action to prevent climate change	Increase	New measure	New measure
1.4 Number of participants in Council environmental programs	Increase	19,346 (impacted by COVID19) <i>Annual result</i>	57,927 <i>Annual result</i>
1.5 Ratio of trees planted versus trees removed on public land	2 : 1 minimum	Not available	4.4 : 1
1.6 Average urban tree canopy cover <i>Source ^Urban Greening Strategy, LiDar Technology (2017, no longer available)</i> <i>*Aerometrex Ltd (2024 and moving forward)</i>	Increase	17.0%^	27.5%*



Image: Local residents using FOGO

Indicator	Target/Desired Trend	Data (2021)	Current Data (2024)
1.7 Residents' average satisfaction score with protection of our natural environment <i>* Latest data from Wollongong City Council Community Satisfaction Survey 2023.</i>	Increase	3.50	3.50*
1.8 Percentage of beaches monitored through the NSW Beachwatch Program rated as good to very good	100%	100%	100%
1.9 Percentage of sites monitored through the Lake Illawarra Estuary Health Program rated as fair to good	100%	100%	100%
1.10 Tonnes of waste generated	Decrease	47,669	44,615
1.11 Percentage of residential waste diverted from landfill (including recycling and organics)	Increase	53% <i>Annual average</i>	49% <i>Annual average</i>
1.12 Residents' average agreement score with their household is prepared for natural disasters (including extreme weather events such as flood/bushfire/storm/heat)	Increase	New measure	New measure



# Goal 2 | Connected

We have well planned, connected, and liveable places

## Community Feedback

“

“A well-planned, connected, and walkable city with shaded pathways, water fountains, and well-lit public spaces.”

“A city with a readily available mix of social and affordable housing rather than just ‘luxury’ apartments.”

“A 15-minute city where suburbs are equipped with necessary amenities, reducing the need for car travel.”

“More footpaths connecting residential areas to key services like shops, schools, and parks.”

”  
“Need to balance apartment construction with adequate green spaces and a commitment to quality urban planning that integrates the city’s natural beauty and subtropical climate.”

“Improve accessibility for people with disabilities and those using mobility aids. Have wider footpaths and better wheelchair access.”



Image: Culture Mix Festival

## How can I contribute to the delivery of our goals?

- Learn about the Aboriginal cultural significance of the place where you live.
- Start a conversation with a friend about active transport to learn about others experiences.
- Plan ahead and use sustainable transport modes such as walking, cycling or public transport.
- Consider carpooling where possible.
- Say hi to your neighbours, and get to know your community.
- Read up on plans for your local neighbourhood.
- Take time to understand the context and impact of your design and build.
- Learn about the items of heritage significance in your local area.
- Care and respect our public places, and put rubbish in the bin, or take it home.
- Share information with family and friends about community transport options for frail older people, people with disabilities and the transport disadvantaged.
- Leave things as you found them, or better.

## Really keen to do more...

- Invest in sustainable design practices for housing and development.
- Design and build all electric new buildings.
- Include affordable housing in new developments.



## Goal 2 | We have well planned, connected, and liveable places

### Objectives

Residents have access to a diverse range of housing options.

Development is balanced, well planned and sustainable, and we protect our Country and heritage.

Transport links and connection throughout the Local Government Area, to Greater Sydney, and the Illawarra Region are strengthened.

There is an increase in sustainable transport use including public transport, walking, and cycling.

### Strategies

How will we get there?	Who will make this happen?	What is Council's Role?	Council's Service/s
2.1 Urban areas are planned and well maintained to provide a healthy and safe environment for our community to live, work and play.	Wollongong City Council State Government Institutions Businesses Non-Government organisations	<b>Advocate</b> <b>Partner</b> <b>Regulator</b>	Development Assessment Infrastructure Strategy and Delivery Land Use Planning Regulatory Compliance Transport Services
2.2 Facilitate ecologically sustainable development that considers the current and future needs of our community and environment.	Wollongong City Council State Government Homes NSW Aboriginal and Torres Strait Islander peoples Developers Investors Businesses Community	<b>Advocate</b> <b>Partner</b> <b>Regulate</b> <b>Service Provider</b>	Development Assessment Economic Development Infrastructure Strategy and Delivery Land Use Planning
2.3 Deliver high quality, fit for purpose and sustainable infrastructure to support a growing and resilient city.	Wollongong City Council State Government Homes NSW Developers/Investors Businesses Community	<b>Advocate</b> <b>Partner</b> <b>Regulate</b> <b>Service Provider</b>	Environmental Services Infrastructure Strategy and Delivery Land Use Planning Transport Services

How will we get there?	Who will make this happen?	What is Council's Role?	Council's Service/s
2.4 Housing provides choice, affordability, and liveability for our diverse community.	Wollongong City Council State Government Community Services Industry Aged Care Industry Developers Investors	<b>Advocate</b> <b>Partner</b>	Community Programs Land Use Planning
2.5 Integrated services are provided to residents in need of urgent shelter.	Wollongong City Council Community Services Industry Aged Care Industry Developers Investors	<b>Advocate</b> <b>Partner</b>	Community Programs Youth Services
2.6 The growth of West Dapto urban release area is well planned with facilities, spaces and educational institutions to support the growing community.	Wollongong City Council State Government Developers Investors Community Educational Institutions	<b>Advocate</b> <b>Partner</b> <b>Regulator</b> <b>Service Provider</b>	Various
2.7 Develop and implement programs and projects that achieve proactive heritage management, education and promotion.	Wollongong City Council State Government Developers Investors Community Groups Community Private Landowners Non-Government Organisations Businesses	<b>Advocate</b> <b>Partner</b> <b>Regulator</b> <b>Service Provider</b>	Community Programs Land Use Planning
2.8 Plan, advocate for, and provide affordable, accessible and sustainable multi-modal transport networks. This includes continuation and expansion of the Gong Shuttle, and active transport infrastructure to meet the community's needs.	Wollongong City Council State Government Transport Industry Businesses Community	<b>Advocate</b> <b>Partner</b> <b>Regulator</b> <b>Service provider</b>	Infrastructure Strategy and Delivery Land Use Planning Transport Services Regulatory Compliance



How will we get there?	Who will make this happen?	What is Council's Role?	Council's Service/s
2.9 Effective and integrated regional transport with a focus on road, bus, rail and freight movement (including the port of Port Kembla).	Wollongong City Council State Government Transport Industry Developers Businesses Community	<b>Advocate</b> <b>Partner</b> <b>Service Provider</b>	Infrastructure Strategy and Delivery Land Use Planning Transport Services
2.10 Plan and provide sustainable infrastructure for safe and liveable places integrated with the environment and accessible to key transport routes.	Wollongong City Council State Government Transport Industry Developers Businesses Community	<b>Advocate</b> <b>Partner</b> <b>Service Provider</b>	Infrastructure Strategy and Delivery Land Use Planning Transport Services
2.11 Advocate for strong transport links within the Local Government Area, and connections to Greater Sydney, particularly Western Sydney (including the Aerotropolis), and the Illawarra Region, to provide physical and economic opportunities.	Wollongong City Council State Government Transport Industry Developers Businesses Community	<b>Advocate</b> <b>Partner</b>	Economic Development Infrastructure Strategy and Delivery Transport Services
2.12 Improve active transport links and connectivity to our unique places and spaces, including marine access along the Local Government Area and accessibility from the Central Business District to the foreshore.	Wollongong City Council State Government Transport Industry Developers Businesses Community	<b>Advocate</b> <b>Partner</b> <b>Service Provider</b>	Infrastructure Strategy and Delivery Transport Services Land Use Planning
2.13 Maintain the service levels of our roads, footpaths, cycleways, and shared paths to an acceptable standard.	Wollongong City Council State Government Transport Industry Businesses Community	<b>Advocate</b> <b>Partner</b> <b>Regulator</b> <b>Service Provider</b>	Infrastructure Strategy and Delivery Transport Services

How will we get there?	Who will make this happen?	What is Council's Role?	Council's Service/s
2.14 Plan and deliver an accessible, safe, clean and inviting public domain.	Wollongong City Council State Government Businesses Investors Developers Community Non-Government Organisations	<b>Advocate</b> <b>Partner</b> <b>Regulator</b> <b>Service Provider</b>	Various
2.15 Community transport options for frail older people, people with disabilities, and the transport disadvantaged, are actively promoted and available.	Wollongong City Council Federal Government State Government Aged Care Sector Community Transport Industry Developers Businesses Community	<b>Advocate</b> <b>Partner</b>	Aged and Disability Services Community Programs Transport Services





# Community Indicators

Goal 2   We have well planned, connected, and liveable places			
Indicator	Target/Desired Trend	Data (2021)	Current Data (2024)
2.1 Residents' average agreement score with new development is appropriate to support a variety of housing to meet the needs of our future populations	Increase	New measure	New measure
2.2 Percentage of affordable housing available for purchase <i>(includes very low, low and moderate income households)</i>	Increase	64.8% of all sales	8.3% of all sales
2.3 Percentage of affordable housing available for rent <i>(includes very low, low and moderate income households)</i>	Increase	76.8% of all rentals	50.6% of all rentals
2.4 Percentage of households unable to access market priced rental housing <i>(includes very low, low and moderate income households)</i>	Decrease	5.0% of all households	Not available
2.5 Residents' average agreement score with the statement 'their neighbourhood is a good place to live'	Maintain	4.40	4.50
2.6 Residents' average satisfaction score with streetscapes around business and shopping areas	Minimum score of 3.75	New measure	New measure
2.7 Percentage of residents who feel safe in their home	Increase	93.0%	91.0%

Image: Wongawilli housing development



Image: e scooter,  
City Beach

Indicator	Target/Desired Trend	Data (2021)	Current Data (2024)
2.8 Percentage of residents who feel safe walking alone in their local area during the day	Increase	94.0%	92.0%
2.9 Percentage of residents who use non-car transport options to undertake a variety of activities including work, shopping, school, dining out, and socialising	Increase	Not available	25% Walk; 7% Train; 7% Bus; 2% Shuttle; 3% Bike
2.10 Residents' average satisfaction score with access to public transport	Minimum score of 3.75	4.00	3.80
2.11 Residents' average satisfaction score with public transport	Minimum score of 3.75	3.70	3.60
2.12 Residents' average satisfaction score with their ability to access private or public transport to meet their mobility needs	Maintain	4.10	4.00
2.13 Residents' average satisfaction score with availability of footpaths. <i>* Latest data from Wollongong City Council Community Satisfaction Survey 2023.</i>	Minimum score of 3.75	New measure	New measure
2.14 Residents' average satisfaction score with availability of cycleways	Minimum score of 3.75	New measure	New measure
2.15 Residents' average satisfaction score with availability of shared use paths	Minimum score of 3.75	New measure	New measure



# Goal 3 | Vibrant

We foster a diverse economy, and we value innovation, culture, and creativity

## Community Feedback

“

“Celebrate cultural diversity with international food festivals, multicultural markets, and cultural parades, as well as activating public spaces through community events. Provide subsidised creative spaces and affordable event venues for artists, especially those who are young and emerging.”

“A vibrant city celebrating cultural diversity with a vibrant restaurant/café/small bar scene.”

“Vibrant with creativity: public art, lots of music and art venues.”

“A diversified economy: A broader range of industries, from advanced manufacturing and technology to tourism, education, and creative industries, could help reduce reliance on traditional sectors. The city could become a hub for innovation and start-ups, with tech incubators and co-working spaces attracting entrepreneurs.”

”

“A vibrant and modern city, with redeveloped existing industrial foreshores attracting start-ups, local manufacturing, and artisanal businesses.”

“Support Aboriginal and Torres Strait Islander creatives with events and space. Facilitate community education initiatives and events that promote reconciliation and cultural understanding, such as Yarning Circles and truth-telling events.”



*Image: Culture Mix Festival*

## How can I contribute to the delivery of our goals?

- Support local, buy local.
- Attend art exhibitions, music performances, festivals, markets, and theatre productions in the area.
- Participate in local workshops and classes.
- Support creatives through sharing of spaces and co-location.
- Partner with local businesses and government.
- Become a volunteer at arts and culture events and activities.

## How can businesses contribute to the delivery of the goals?

- Grow your business within the Wollongong Local Government Area.
- Employ trainees, cadets or recent graduates to retain local talent, attract new workers and provide opportunities in the Local Government Area.
- Actively seek funding opportunities to the benefit of your business and the Wollongong Local Government Area.
- Promote the area as an investment opportunity for hotel and tourism accommodation.





## Goal 3 | We foster a diverse economy, and we value innovation, culture, and creativity

### Objectives

The region's economy continues to diversify, and local employment opportunities increase.  
Creative and cultural industries are fostered and thriving.  
Wollongong is an events destination.

### Strategies

How will we get there?	Who will make this happen?	What is Council's Role?	Council's Service/s
3.1 Support educational and employment opportunities that retain young people and local talent, attract new workers and provide opportunities for the unemployed.	Federal Government State Government Wollongong City Council Businesses Educational Institutions Industry	<b>Advocate Partner</b>	Economic Development Youth Services
3.2 Continue to diversify and grow the Wollongong economy to enhance its economic and employment role in the Region recognising opportunities and challenges in South-West Sydney.	Wollongong City Council State Government Businesses Educational Institutions Industry	<b>Advocate Partner</b>	City Centre Management Development Assessment Economic Development
3.3 Increase and attract new business investment and enterprise to Wollongong while supporting and growing existing local businesses.	Wollongong City Council State Government Businesses Educational Institutions Industry Tourism Groups	<b>Service Provider &amp; Partner</b>	Community Programs Cultural Services Economic Development Libraries
3.4 Continue to build Wollongong CBD as a vibrant employment precinct with an active evening economy.	Wollongong City Council State Government Businesses Community Services Sector Industry Community Educational Institutions Cultural and Arts Groups	<b>Advocate Partner Regulator</b>	Various

How will we get there?	Who will make this happen?	What is Council's Role?	Council's Service/s
3.5 Encourage an innovative and diverse economy, which drives entrepreneurship, research capability and commercialisation in the Wollongong Local Government Area.	Wollongong City Council State Government Businesses Educational Institutions Industry	<b>Advocate</b> <b>Partner</b>	City Centre Management Economic Development
3.6 We are leaders in sustainable industries and support a transition to a low-carbon and clean energy future.	Wollongong City Council State Government Businesses Environmental Groups Educational Institutions Industry Community Non-Government Organisations	<b>Advocate</b> <b>Partner</b>	Development Assessment Economic Development Environmental Services Land Use Planning Waste Management
3.7 Support key growth sectors to assist in the ongoing transition of Wollongong's economy, including Port Kembla industrial lands.	Wollongong City Council State Government Businesses Environmental Groups Clean Energy Sector Industry Community	<b>Advocate</b> <b>Partner</b>	Development Assessment Economic Development Environmental Services Land Use Planning
3.8 Promote the Wollongong Local Government Area as an event, conference and visitor destination.	Wollongong City Council State Government Businesses Tourism Groups Community Educational Institutions Cultural and Arts Groups	<b>Advocate</b> <b>Partner</b>	Engagement, Communications and Events Economic Development



How will we get there?	Who will make this happen?	What is Council's Role?	Council's Service/s
3.9 Enable signature events and festivals where communities and visitors can gather and celebrate.	Wollongong City Council State Government Businesses Industry Community	<b>Advocate</b> <b>Partner</b> <b>Regulator</b>	Arts and Culture City Centre Management Community Facilities Community Programs Development Assessment Economic Development Engagement, Communications and Events Libraries Property Services
3.10 Promote and support tourism opportunities through planning controls and infrastructure.	Wollongong City Council State Government Businesses Tourism Industry Developers/Investors Community	<b>Advocate</b> <b>Partner</b> <b>Regulator</b>	Engagement, Communications and Events Economic Development Land Use Planning
3.11 Using community art and cultural development practices, our places and spaces reflect the creativity, history, and identity of our people.	Wollongong City Council State Government Non-Government Organisations Creative Sector Businesses Educational Institutions Community	<b>Advocate</b> <b>Partner</b> <b>Regulator</b> <b>Service Provider</b>	Arts and Culture Community Programs Land Use Planning Libraries Youth Services
3.12 Promote museums and galleries as part of the cultural landscape.	Wollongong City Council State Government Non-Government Organisations Creative Sector Businesses Community Educational Institutions	<b>Advocate</b> <b>Partner</b> <b>Regulator</b> <b>Service Provider</b>	Arts and Culture Community Programs

## Community Indicators

### Goal 3 | We foster a diverse economy, and we value innovation, culture, and creativity

Indicator	Target/Desired Trend	Data (2021)	Current Data (2024)
3.1 Number of Crown Street Mall inbound people movements via public domain entrances	Increase	Not available	1,200,000 <i>Annual result</i>
3.2 Number of jobs located within the Wollongong Local Government Area <i>* Latest data 2022-2023</i>	Increase	97,740	102,802*
3.3 Wollongong Local Government Area unemployment rate (12-month average).	Maintain in line with NSW average	6.1% Wollongong vs. 6.0% (NSW)	5.9% Wollongong vs. 3.7% (NSW)
3.4 Wollongong City's Gross Regional Product (GRP) as a proportion (percentage) of the Illawarra-Shoalhaven <i>* Latest data 2022-2023</i>	At least 58%	58.4%	57.6%*
3.5 Residents' average agreement score with there being enough opportunities to attend arts and related cultural activities	Minimum score of 3.75	3.60	3.70
3.6 Percentage of residents who participate in arts and related cultural activities (painting, visiting museums and galleries, playing a musical instrument, attended a community events including live music and cultural, dancing, creative writing)	75%	Not available	61.0%
3.7 Residents' average satisfaction score with arts and cultural events such as festivals, performances and exhibitions in Wollongong Local Government Area	Minimum score of 3.75	New measure	New measure
3.8 Number of events secured by Destination Wollongong on behalf of Council	20 plus events contracted per annum	8 (COVID affected)	19 <i>Annual result</i>
3.9 Residents' average agreement score with cultural diversity and creativity is valued and celebrated	Maintain	4.00	4.00
3.10 Residents' average satisfaction score with access to learning and education opportunities	Minimum score of 3.75	New measure	New measure
3.11 Number of domestic overnight visits in the Wollongong Local Government Area	Increase	665,000 Two-year average	877,000 Two-year average



# Goal 4 | Inclusive

We have a healthy, respectful,  
and inclusive community

## Community Feedback

“

“A drop in wait times for mental health, elective surgeries etc. I want to see bulk billing brought back into the Illawarra... this sort of preventative care would reduce stress on our systems.”

”

“Safe spaces for everyone. From parents with young children playing in playgrounds to exercise equipment for the elderly.”

“A friendly multicultural community, where everyone is treated with respect and valued.”

“Ensure pathways, crossings, and public buildings are accessible for people with disabilities. Create multi-generational spaces that encourage interaction between different age groups.”

“Inclusivity, no racism, no discrimination.”

“A really big park with a water area and normal area with monkey bars. A lake with a big bridge that canoes can go under and a local splash park!”

“A healthy community with access to fresh and locally grown food.”



*Image: Aboriginal Smoking Ceremony,  
Sculpture in the Garden, Wollongong  
Botanic Garden*

## How can I contribute to the delivery of our goals?

- Enjoy local beaches and spaces in an active and safe way.
- Learn about water safety, and promote water safety through networks, schools and community groups.
- Join a NAIDOC Week event or activity and get to know your local community.
- Get moving and enjoy an active lifestyle.
- Connect and foster belonging through a sporting or interest group.
- Participate in a civic issue and give feedback on issues relevant to you.
- Attend your local library or community facility to learn and/or meet with others.
- Consider ways to include access for all abilities to spaces and events.
- Take up a hobby to learn a new interest.
- Take a walk with friends in a beautiful location.
- Take part in a youth event at the Wollongong Youth Centre.
- Give back to your local community by becoming a volunteer.
- Be respectful of others, and value differences.



## Goal 4 | We have a healthy, respectful, and inclusive community

### Objectives

Respect, engage and recognise diverse Aboriginal and Torres Strait Islander communities, their rich histories and continuing culture.

Strong diverse local cultures are supported in a welcoming community where everyone belongs.

Residents are engaged and play an active role in the decisions that affect their city.

There is an improvement in physical and mental health, wellbeing and belonging in our community.

### Strategies

How will we get there?	Who will make this happen?	What is Council's Role?	Council's Service/s
4.1 Accessible and appropriate health care services are available to the community.	Wollongong City Council Federal Government State Government Health Industry	<b>Advocate</b> <b>Partner</b>	Community Programs Corporate Strategy Land Use Planning
4.2 Provide a variety of quality and accessible public spaces and opportunities for sport, play, leisure, recreation, learning and cultural activities in the community.	Wollongong City Council State Government Health Industry Businesses Non-Government Organisations Community	<b>Advocate</b> <b>Partner</b> <b>Service Provider</b>	Aquatic Services Arts and Culture Botanic Garden and Annexes Environmental Services Land Use Planning Parks and Sportfields
4.3 Provide safe, well - maintained and accessible beaches and aquatic facilities, and promote water and beach recreation safety to residents and visitors.	Wollongong City Council State Government Tourism Industry Sporting Industry Community Visitors	<b>Advocate</b> <b>Partner</b> <b>Service Provider</b>	Aquatic Services Botanic Garden and Annexes Leisure Centres Natural Area Management Parks and Sportfields
4.4 Plan for, and provide opportunities for inclusion for people of all abilities in our community.	Wollongong City Council State Government Tourism Industry Sporting Industry Community Visitors	<b>Advocate</b> <b>Partner</b> <b>Service Provider</b>	Various

How will we get there?	Who will make this happen?	What is Council's Role?	Council's Service/s
4.5 Healthy, active ageing programs are provided and promoted in partnership with government agencies and community organisations.	Wollongong City Council State Government Aged Care Industry Community Businesses	<b>Advocate</b> <b>Partner</b>	Aged and Disability services Parks and Sportfields Leisure Centres
4.6 Work together, to reduce crime, and foster a safe, and resilient community.	Wollongong City Council State Government Community Groups Community	<b>Advocate</b> <b>Partner</b>	Aged and Disability Services Arts and Culture Community Facilities Community Programs
4.7 Work towards enabling all people in our community to have access to safe, nutritious, affordable, and sustainably produced food.	Wollongong City Council State Government Health Industry Community Non-Government Organisations Environmental Groups	<b>Advocate</b> <b>Partner</b>	Botanic Garden and Annexes Environmental Services Land Use Planning
4.8 Provide our community with equitable services, access to education, and information to help them make informed decisions.	Wollongong City Council State Government Educational Institutions Non-profit organisations	<b>Advocate</b> <b>Partner</b> <b>Service Provider</b>	Corporate Strategy Engagement, Communications and Events Governance and Administration Information Management and Technology Integrated Customer Service Libraries
4.9 Provide programs, services and places including libraries and facilities for social cohesion, cultural activities and community belonging.	Wollongong City Council State Government Educational Institutions Non-profit organisations	<b>Advocate</b> <b>Partner</b> <b>Service Provider</b>	Community Programs Engagement, Communications and Events Governance and Administration Integrated Customer Service Libraries Youth Services



How will we get there?	Who will make this happen?	What is Council's Role?	Council's Service/s
4.10 Work in partnership to reduce inequity and build on opportunities to strengthen vulnerable communities.	Wollongong City Council State Government Educational Institutions Non-profit organisations	<b>Advocate</b> <b>Partner</b> <b>Service Provider</b>	Community Programs Youth Services
4.11 Partner with our diverse communities, including Local Aboriginal and Torres Strait Islander, and Culturally and Linguistically Diverse communities on programs and projects.	Wollongong City Council State Government Aboriginal and Torres Strait Islander peoples Community	<b>Advocate</b> <b>Partner</b> <b>Service Provider</b>	Arts and Culture Community Programs Engagement, Communications and Events Land Use Planning Libraries Youth Services
4.12 In the spirit of reconciliation, build awareness and understanding of Local Aboriginal and Torres Strait Islander culture, heritage and histories.	Wollongong City Council State Government Educational Institutions Non-Government organisations Aboriginal and Torres Strait Islander peoples Businesses	<b>Advocate</b> <b>Partner</b>	Various
4.13 Support and strengthen the local community services sector.	Wollongong City Council State Government Non-profit organisations Businesses Community Services Sector Community Educational Institutions	<b>Advocate</b> <b>Partner</b> <b>Service Provider</b>	Arts and Culture Community Facilities Community Programs Leisure Centres Libraries Youth Services
4.14 Council demonstrates responsible leadership that is customer focused, demonstrates respect and inclusion, and uses resources that are managed effectively to ensure long-term sustainability.	Wollongong City Council	<b>Advocate</b> <b>Service Provider</b>	Various



Image: Holborn Skate Plaza, Berkeley

### Community Indicators

Goal 4   We have a healthy, respectful, and inclusive community			
Indicator	Target/Desired Trend	Data (2021)	Current Data (2024)
4.1 Residents' average agreement score with Aboriginal and Torres Strait Islander's rich history and culture are respected and recognised	Minimum score of 3.75	New measure	New measure
4.2 Percentage of residents who know how to contact their local Councillor and/or Member of Parliament (MP)	100%	82% Councillors 72% State MP 65% Federal MP	75% Councillors 67% State MP 56% Federal MP
4.3 Residents' average agreement score with feeling they have a say on important issues	Increase	Not available	2.90
4.4 Residents' average satisfaction score with Wollongong City Council's overall performance <i>* Latest data from Wollongong City Council Community Satisfaction Survey 2023.</i>	Increase	3.70	3.50*
4.5 Wollongong City's (Local Government Area) personal wellbeing index	Minimum score of 80 out of 100	79.00	77.60



Indicator	Target/Desired Trend	Data (2021)	Current Data (2024)
4.6 Residents' average satisfaction score with their life as a whole	Maintain	4.20	4.30
4.7 Residents' average satisfaction score with access to affordable fresh food	Minimum score of 3.75	4.20	3.70
4.8 Residents' average satisfaction score with their health	Maintain	4.10	4.00
4.9 Residents' average satisfaction score with availability and access to health services	Minimum score of 3.75	New measure	New measure
4.10 Residents' average agreement score with it's a good thing for society to be made up of people from different cultures and communities	Maintain	4.60	4.50
4.11 Residents' average satisfaction score with feeling part of the community	Minimum score of 3.75	3.90	3.90
4.12 Residents' average satisfaction score with the range of community groups and support networks for residents	Minimum score of 3.75	New measure	New measure
4.13 Residents' average agreement score with having enough opportunity in local area to participate in sport and recreational activities	Maintain	4.20	4.10
4.14 Percentage of residents who participate in a sport or recreational activity	Increase	59%	65%
4.15 Number of recorded incidents of domestic violence related assaults	Decrease	656 <i>Oct 20- Sept 21</i>	743 <i>Oct 23-Sept 24</i>
4.16 Number of recorded incidents of break and enter dwelling	Decrease	562 <i>Oct 20- Sept 21</i>	480 <i>Oct 23-Sept 24</i>



Image: Aboriginal Smoking Ceremony, Sculpture in the Garden, Wollongong Botanic Garden

## The relationship between the Community Strategic Plan and other strategies and plans

### The United Nations Sustainable Development Goals

The United Nations Sustainable Development Goals were agreed and adopted by the United Nations member states, including Australia, in September 2015 as part of the 2030 Agenda for Sustainable Development. Seventeen Goals underpinned by 169 targets will guide efforts to increase global wellbeing by addressing some of society's key challenges.

As the goals relate to the global environment, some of the issues that are explored are not as relevant to Wollongong as they are to developing countries. There are other goals, such as Sustainable Cities and Communities that are very relevant to Local Government, and focus on urban planning and accessible transport.

Each of the United Nations Sustainable Development Goals have been considered in the preparation of this Plan, and where there is alignment, they have been mapped to each goal in this Community Strategic Plan.







Image: Cringila Hills Mountain Bike Track

## Strategic planning framework

There are a number of Federal, State and Regional strategies and plans Council works towards and these documents have been considered in the development of Our Wollongong Our Future 2035.

These include:

National Housing Accord; State Disaster Mitigation Plan 2024-2026; Future Health 2022-2032; Future Transport 2056 (2020); State Infrastructure Strategy 2022-2042; NSW 2040 Economic Blueprint; Net zero plan stage 1 2020-2030; NSW Housing Strategy 2041; Sydney Water Growth Servicing Plan 2024-2029; NSW Connecting with Country; Illawarra Shoalhaven Regional Plan 2041; Illawarra Shoalhaven Regional Transport Plan 2056; Ageing Well in NSW: Seniors Strategy 2021-2031; Homelessness NSW Strategy 2023-2028 and the Illawarra Shoalhaven Joint Organisation Statement of Regional Priorities to name but a few.

The Plan builds on existing regional strengths and supports a number of key outcomes including:

- Growing the Port of Port Kembla
- Increasing urban tree canopy
- Building resilient places and communities
- Reducing emissions
- Improving transport connectivity
- Increasing active and public transport usage.

There are several key projects Council is working on with state agencies. Some of these include:

- Wollongong Shellharbour Integrated Transport Plan
- Northcliffe Drive Extension Project to facilitate east/west connection to West Dapto
- Resilience and Disaster Planning
- Affordable Housing initiatives
- Wollongong Health Precinct
- Transport Orientated Development Program
- State Zero emissions by 2050 targets
- Port Kembla Regional Employment Precinct Profile
- Open Coast Coastal Management Program
- Lake Illawarra Coastal Management Plan
- Plans of Management for Crown Lands
- Floodplain Planning
- Wollongong Station Master Plan
- Illawarra Sports and Entertainment Precinct Master plan
- Various transport projects
- Bluescope Master Plan
- Warrawong Parklands.





*Image: Hydrogen bus,  
© State of New South Wales  
(Transport for NSW)*

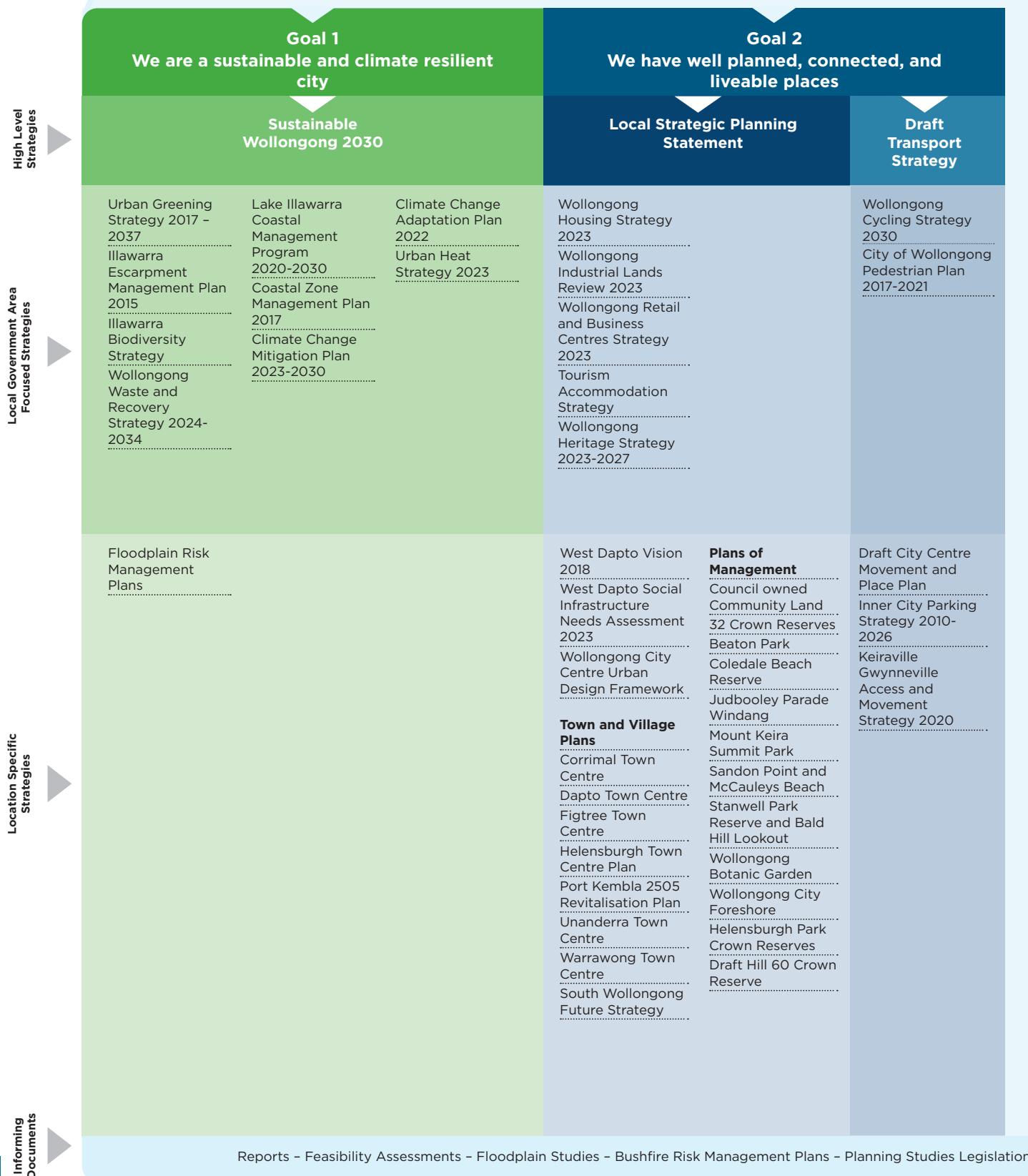
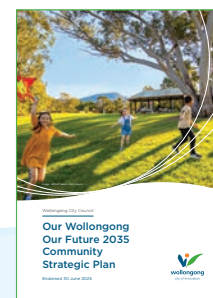
## Council's Supporting Document Framework

To bring our Strategic Plan to life, Council has a suite of related Strategies, Plans and Policies. Our Wollongong Our Future 2035 represents the highest level of strategic planning undertaken by Council. Council has many other strategies and plans for specific focuses that are developed following planning and engagement. Council refers to its adopted strategies and plans as Supporting Documents. These direction setting documents support the development of the Community Strategic Plan, Council's Resourcing Strategy, Delivery Program and Operational

Plans. These documents include goals, strategies and actions specific to a project or location. However, until the actions are enabled through resourcing and included in the Delivery Program and Operational Plan, they remain aspirational. Council's Supporting Documents have been considered in the development of the Community Strategic Plan. These Supporting Documents have been informed by extensive data, research and community input, making them an important source for consideration in the future vision and goals for the Wollongong Local Government Area.

# Wollongong City Council Supporting Documents Roadmap

The following Supporting Documents have been endorsed by Council as draft or adopted by Council as final:







The Resourcing Strategy supports the delivery of Council's Delivery Program

Goal 3 We foster a diverse economy, and we value innovation, culture, and creativity		Goal 4 We have a healthy, respectful, and inclusive community		
Economic Development Strategy 2019-2029	Creative Wollongong 2024-2033	Places for People Wollongong Social Infrastructure Planning Framework 2018-2028	Resourcing Strategy 2025-2035	
Destination Wollongong Major Events Strategy	Cultural Tourism Strategy 2018 Animating Wollongong Public Art Strategy 2022-2032	Reconciliation Action Plan 2021-2023 Disability Inclusion Action Plan 2020-2025 Play Wollongong Strategy 2014-2024 The Future of Our Pools Strategy 2014-2024 Sportsgrounds and Sporting Facilities Strategy 2023-2027	Places for the Future: Social Infrastructure Future Directions 2023-2036 Discover Learn and Connect Wollongong City Libraries Strategy 2024-2028 Wollongong Community Safety Plan 2021-2025 Public Toilets Strategy 2019-2029 Beach and Foreshore Access Strategy 2019-2028	Long-Term Financial Plan 2025-2035 Asset Management Strategy 2025-2035 Workforce Management Strategy 2025-2029 Digital Strategy 2025-2029
Tourist Parks Improvement Strategy & Master Plan 2017-2022	Framing Our Future Wollongong Art Gallery Strategic Plan 2020-2025	Masterplans Beaton Park Blue Mile Wollongong Botanic Garden Bulli Showground Corrimal Heated Pool Cringila Hills Recreation Draft Bellambi Foreshore Figtree Oval Grand Pacific Drive Hill 60 Kembla Grange Cemetery King George V Oval Memorial Gardens Stuart Park JP Galvin Park	Asset Management Plans	

Studies – Reviews – Conservation Management Plans – Engagement Frameworks – Design and Technical Manuals

## Relationship to Local Strategic Planning Statement

The Community Strategic Plan is the highest level Plan in the framework, and informs the preparation of the Local Strategic Planning Statement (LSPS). The LSPS is developed to guide decisions relating to urban planning and is informed by Regional Plans, and informs decisions relating to Council's Local Environmental Plan and Development Control Plans.



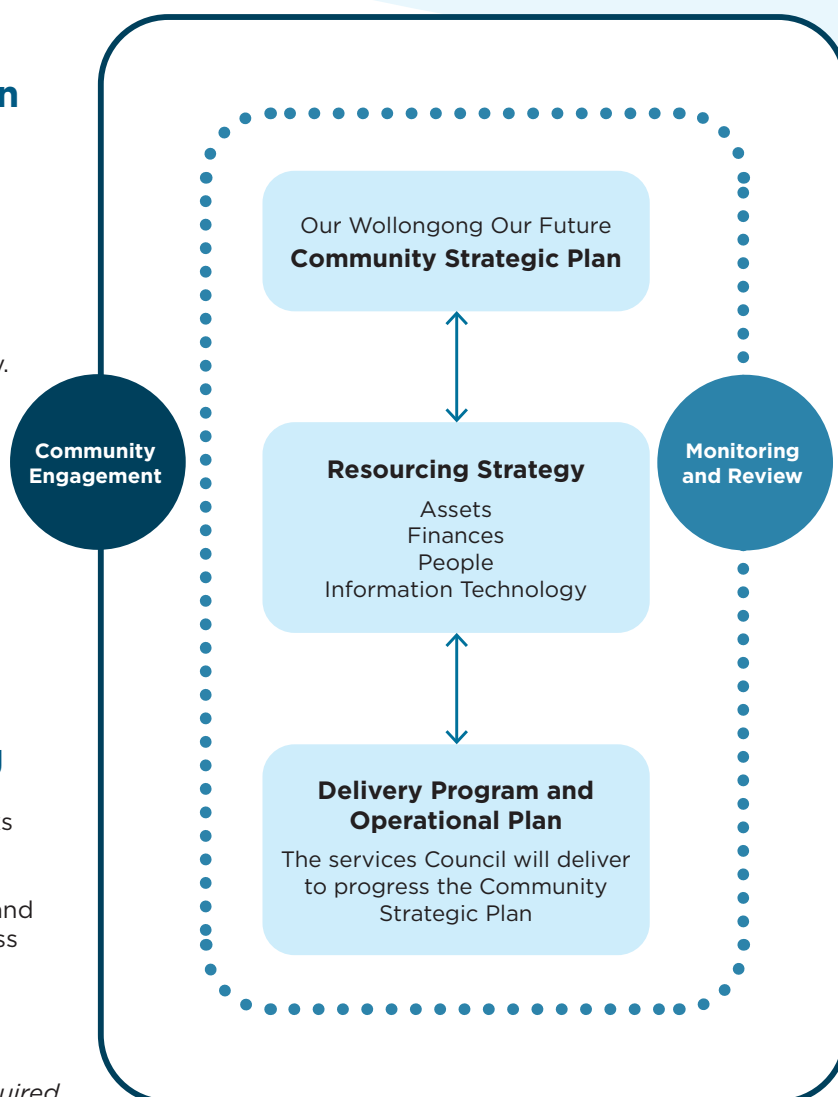
## Implementing the Community Strategic Plan

Council's Delivery Program and Operational Plan responds to the community's vision and goals and outlines the services and projects that Council has capacity to deliver. It is a result of rigorous planning and prioritisation and aims to provide the best valuable services to the community. The Resourcing Strategy outlines the finances, assets, workforce and information management technology that will be used to achieve the Program and Plan. To help make the aspirations of this Plan a reality, Council will work together with other levels of government, business, educational institutions, community groups and individuals to contribute to the delivery of goals and strategies.

## Monitoring and reporting

Wollongong City Council regularly tracks and monitors the Delivery Program and Operational Plan, and reports to the community on progress on a quarterly and annual basis. Council also tracks progress towards the Community Strategic Plan through the State of our City Report.

*All reports will be available on Council's website at [www.wollongong.nsw.gov.au](http://www.wollongong.nsw.gov.au)*  
*All Councils in New South Wales are required to plan and report on their activities as part of the Integrated Planning and Reporting Framework set out by the Local Government Act 1993 and Local Government (General) Regulation 2005.*





## Our sustainability commitment

Wollongong City Council will work to protect our local environment, reduce the use of natural resources and to support our quality of life for present and future generations. We will demonstrate leadership and responsible planning and decision-making to avoid any harmful local and global effects of our actions. We will also work in partnership with the community, stakeholders and other government organisations to achieve our sustainability and climate change commitments.

A quadruple bottom line approach, based on achieving integrated sustainability through the interlinked areas of environmental, social, economic and governance activities, underpin Council's commitment to sustainability. Principles have been developed which further clarify how these areas will be considered by Council in carrying out its operations.

### Governance:

- a) We value sustainability leadership and will demonstrate how sustainability can be practically implemented;
- b) We believe sustainability should be intrinsic to all decision-making and incorporated as a fundamental component of all Council processes;
- c) We support understanding of the importance of sustainability and will improve sustainability awareness throughout Council and the community; and
- d) We recognise the importance of issues beyond our borders and aim to create a balance between local and global issues.

### Environmental sustainability:

- a) We respect our natural resources and work to protect and enhance these for current and future generations;
- b) We value our natural biodiversity and work to protect and enhance local native habitat;
- c) We treasure our coastal areas and waterways and work to maintain their health and special qualities;

- d) We will not undertake any actions that have a potential risk to cause serious harm to the community or the environment even in the absence of scientific certainty (the precautionary principle);
- e) We recognise the importance of access to fresh, local and sustainably produced food;
- f) Climate Change - Council is committed to a whole of organisation approach to reducing the impacts of climate change, from planning for future sustainable infrastructure, modes of transport, planning considerations and community education.

### Social-cultural sustainability:

- a) We respect universal social justice and will work to improve community wellbeing and quality of life;
- b) We value social equity and believe that services, facilities and community amenities should be accessible and equitable;
- c) We support equal rights and constructive engagement with the community in decision-making;
- d) We will actively involve people from diverse linguistic, cultural and spiritual backgrounds.

### Economic sustainability:

- a) We will use resources efficiently and responsibly and reduce our ecological footprint;
- b) We support sustainable asset management principles;
- c) We understand the impact of poverty on quality of life and will work to address disadvantage in our community;
- d) We value a strong local economy and will encourage the use of local businesses and resources in our operations;
- e) We believe in local economic growth that respects our natural heritage and values and will foster sustainable and green economic opportunities.

# Our engagement principles

The approach we used to develop Our Wollongong Our Future 2035 Community Strategic Plan was underpinned by the social justice principles of equity, access, participation and rights. When applied well, these principles offer opportunities to: involve the community in decision making; build relationships and trust; strengthen community; and create a sense of belonging; and keep the community informed. These principles also informed the development of the Delivery Program and Operational Plan.

Our Community Engagement Strategy Council Policy outlines Council's commitments and principles for engaging with our community. Your views, ideas and local knowledge are an important part of the decision-making process. Other things we need to consider include financial impact, legislation (State and Federal), Council policies and resolutions, technical information, and economic, environmental, social, and governance impacts.

Our engagement principles were:

## Build awareness and understanding

Use methods to help everyone learn about what the Community Strategic Plan means and why it's important.

## Learn what people want for the Wollongong Local Government Area

Ask clear questions and use practical methods to understand the community's expectations and priorities for the future of our area.

## Include diverse voices

Use inclusive methods based on social justice principles to make sure we hear from all parts of our community.

## Get more people involved

Try various methods to encourage as many people as possible to share their views and participate in our discussions.

## Term

## Definition

Accessible	Accessible means easy for everyone to reach, enter, use, understand, or enjoy, especially for people who may face barriers due to disability, age, language, or other circumstances. This plan uses accessible to describe access to places, information, transport and health care.
Belonging	Belonging is feeling safe, accepted, included, and valued as part of a group, place, or community.
Biodiversity	Biodiversity refers to the variety of all living things including different plants, animals, fungi and micro-organisms, the genetic information they contain, and the ecosystems they form a part of. It is often described as the 'web of life', because all life forms are interconnected and depend on each other.
Circular Economy	An approach to managing resources that aims to keep materials, products and resources in use for as long as possible through reuse, repair, refurbishment and recycling.
Climate Change	Climate change refers to long-term shifts in temperatures and weather patterns, largely driven by human activities, particularly the burning of fossil fuels like coal, oil, and gas. These activities release greenhouse gases (like carbon dioxide) into the atmosphere, which trap heat in the atmosphere and contribute to global warming.
Community	Refers to residents, rate payers and landowners, business owners and operators, people who work in the Wollongong Local Government Area, visitors, government agencies, users of Council services, and members of local community groups and associations.
Diverse	Diverse means having a variety or being made up of many different people, things or ideas. In this plan, it is used to describe the diversity of our community, and the range of industries and sectors that make up the local economy.

Term	Definition
Ecologically Sustainable Development	Recognises the need to balance development such as housing or industrial uses with the protection and long-term health of rivers, ecosystems and natural areas which support our communities with clean air, water and other essential natural services now and into the future.
Environment	For this plan, the word 'environment' refers to the physical setting and includes the natural, built, social and cultural environments. While other environments such as the political or economic environment exist, this plan refers to the physical environment within the Wollongong Local Government Area.
Environmental Sustainability	Wollongong City Council describes environmental sustainability as a commitment to 'reducing our environmental impact and creating a sustainable future'. Council's commitment to environmental sustainability is outlined on page 53 of this Plan.
Equitable	Providing fair access to services, opportunities, and resources by recognising and responding to the different needs and barriers faced by individuals or groups. Being equitable is not the same as treating everyone the same – it means ensuring people get the support the need to have equal outcomes.
Infrastructure	Refers to built structures and systems such as roads, railways, airports, water supply, sewers, power grids, telecommunications networks, buildings and public facilities.
Inclusion	Creating communities where everyone is respected, valued, and able to fully participate-regardless of background, identity, ability, or circumstance.
Innovation	Using new ideas, technologies, or methods to improve how Council delivers services, engages with the community, and manages resources.
Liveable	The degree to which a city supports the health, wellbeing and quality of life of its residents, now and into the future.
Natural Environment	The natural environment includes all living and non-living things occurring naturally, such as: air, water, soil, plants, animals, ecosystems and natural landscapes. It exists independently of human-made structures, although it may be influenced by human activity.
Resilience	Resilience, in this Plan, refers to the ability of natural systems, communities, and infrastructure to withstand, adapt to, and recover from climate change impacts and natural disasters - such as extreme weather events, sea level rise, and changing ecosystems.
Integrated	Integrated means that different elements are connected and coordinated to function as one system.
Social cohesion	Social cohesion is the degree to which people feel connected, included, and committed to their community, and are willing to cooperate and support one another for the common good.
Sustainable	In this plan, the term 'sustainable' is used in different contexts, including environmental, social, cultural, economic sustainability. Further detail is provided on page 53 of this plan.
Vulnerable communities	Refers to groups in the community who may be underrepresented or face barriers to participation. This can include, for example, people with disability, Aboriginal communities, culturally and linguistically diverse groups, and low-income households. Council is committed to engaging with all parts of the community, including those who may experience disadvantage or exclusion.





On Dharawal Country, from the mountains to the sea,  
we value our natural environment, we respect each other,  
our past and future. We will be a sustainable, connected,  
vibrant, and innovative city, with a diverse economy.

We are a sustainable and climate resilient city

We have well planned, connected, and liveable places

We foster a diverse economy, and we value innovation, culture, and creativity

We have a healthy, respectful, and inclusive community



**Wollongong City Council**  
[wollongong.nsw.gov.au](http://wollongong.nsw.gov.au)  
Phone (02) 4227 7111



**WOLLONGONG.**  
**AUSTRALIA'S**  
**ONLY UCI BIKE CITY**